

The Joint Water Pollution Control Plant (JWPCP) is the wastewater treatment plant located on both sides of Figueroa Street, south of Sepulveda and north of Lomita. This newsletter will update you about the operations at the JWPCP.

WHO OPERATES THE JWPCP?

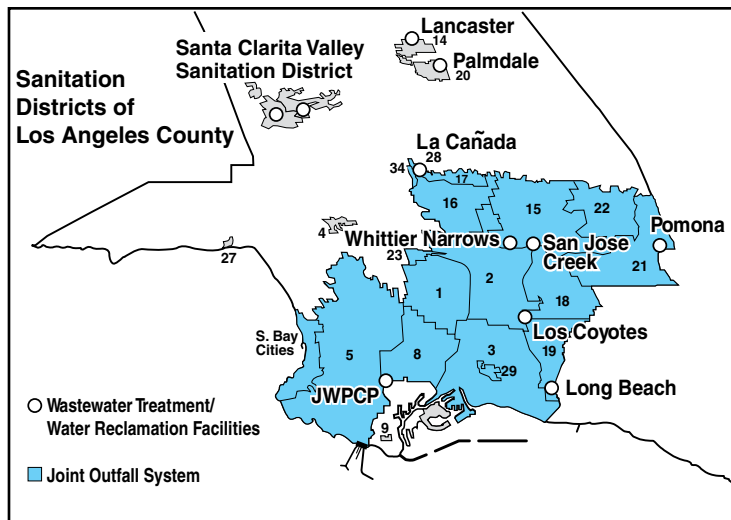
The JWPCP is owned and operated by the Sanitation Districts of Los Angeles County (Sanitation Districts). The Sanitation Districts provide environmentally sound, cost effective wastewater and solid waste management and in the process, convert waste into resources such as reclaimed water, energy, and recycled materials. The Sanitation Districts are a partnership of 24 independent special districts serving about 5.2 million people within the county.

The Sanitation Districts (see map right) operate and maintain approximately 1300 miles of main trunk sewers and 11 wastewater treatment plants that convey and treat approximately 510 million gallons per day (mgd) of wastewater. About 200 mgd of this is treated to a high degree and made available for reuse in our dry Southern California area. The JWPCP is the largest of the Sanitation Districts' wastewater treatment plants. It presently treats approximately 320 mgd.

The Sanitation Districts also operate a comprehensive solid waste management system serving the needs of a large portion of Los Angeles County. For more information on the Sanitation Districts' wastewater and solid waste management systems, visit our web site at www.lacsd.org.

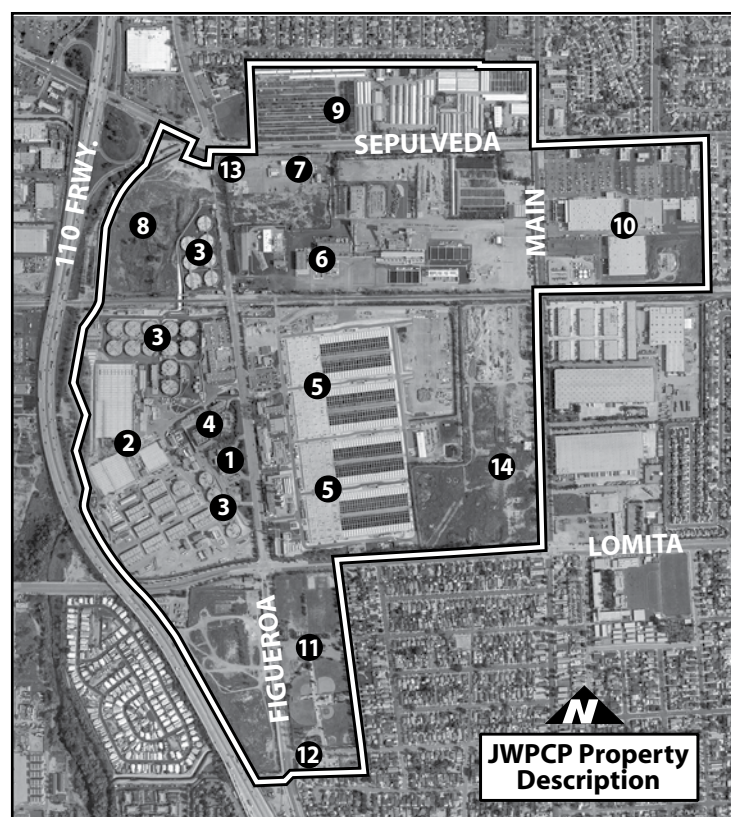
JWPCP PROPERTY DESCRIPTION

The JWPCP property covers over 400 acres and is shown on the photo, right. Besides property used for wastewater treatment purposes (areas 1-6), the JWPCP has various buffer areas between its operational areas and surrounding residential neighbors (areas 8-13). The buffer areas include nursery operations on property leased to Color Spot, the Wilmington Jaycees Athletic Complex, the Wilmington Boys and Girls Club, a 17-acre fresh



Legend for photo below:

- | | |
|---------------------------------|-------------------------|
| 1. Administrative office | 10. Home Depot |
| 2. Primary treatment | Commercial Complex |
| 3. Solids digestion | 11. Wilmington Jaycees |
| 4. Power generation | Athletic Complex |
| 5. Secondary treatment | 12. Wilmington Boys and |
| 6. Solids dewatering facilities | Girls Club |
| 7. Kellogg Supply Inc. offices | 13. CNG Fueling Station |
| 8. Fresh water marsh area | 14. Former Fletcher |
| 9. Color Spot Nursery | Oil Company |



water marsh, the Home Depot commercial complex, and a compressed natural gas (CNG) fueling station.

The JWPCP itself is divided into four functional areas: Primary Treatment, where physical treatment of raw wastewater takes place and solids removed from the treatment processes are biologically treated in digesters; Secondary Treatment, where the wastewater leaving primary treatment receives biological treatment; Solids Processing, where the treated solids from the digesters are dewatered; and Power Generation, which generates the electrical requirements for JWPCP using, as fuel, a waste gas produced on-site in the solids digestion process. The treated wastewater is then disinfected and sent to the ocean through an ocean outfall system that extends 1 ½-miles off shore from White Point on the Palos Verdes Peninsula.

ODOR CONTROL AT JWPCP

The Sanitation Districts are committed to make every effort to reduce any odors from the JWPCP to an insignificant level. Over \$70 million has been spent to reduce odors from the JWPCP in the last seven years. These odor control efforts have resulted in a dramatic reduction in plant related odors and include the following projects.

Primary Sedimentation Tank Covers

The primary sedimentation tanks (area #2) were fitted with new tight-sealing covers in 2001 to prevent the escape of odorous air. This \$6.5 million project, combined with the Skimmings Odor Control System (see below), should effectively eliminate odors from the primary treatment part of the plant.

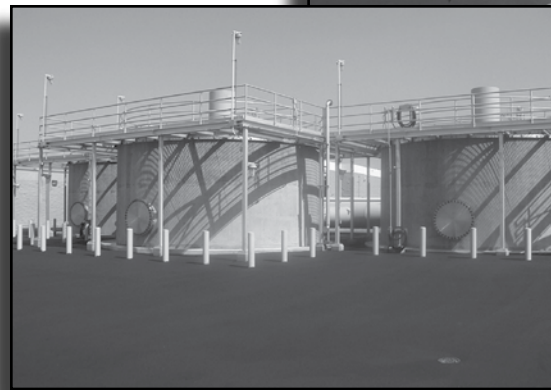
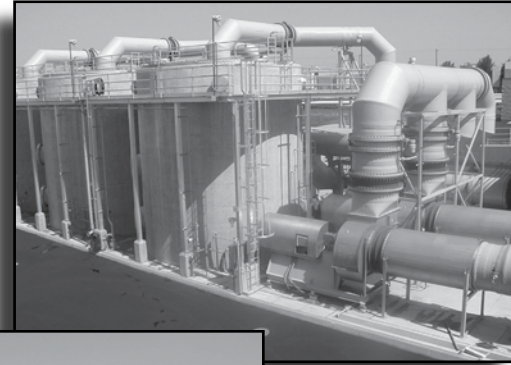
Biosolids Odor Control

Tremendous progress has taken place during the past four years to significantly reduce and hopefully eliminate odors from the wastewater solids processing area of the plant (area #6). Biofilters have been built to treat the air from these facilities. Modifications have been made to the solids processing facilities, storage silos, and truck loading facilities to more effectively remove all of the odorous air for treatment. This \$23 million project was completed in 2005.

Central Odor Control

This \$10 million project replaced all of the older, smaller, odor scrubbers in the primary treatment section of the plant (area #2) with one large central odor scrubbing system. The project was completed in 2005 and increased the odor scrubbing capacity by 50%.

*Central Odor Control
Biotrickling Scrubbers, right,
and Carbon Scrubbers, below*



Skimmings Odor Control

This \$32 million project will provide facilities to remove the air from the sealed primary treatment tanks and surrounding channels for delivery and treatment at odor control facilities. The project should be completed by the end of this year.

Prior to completion of these projects, the Sanitation Districts were capturing and treating 130,000 cubic feet of air every minute (cfm) from the plant processes. The Sanitation Districts, at the completion of the Skimmings Odor Control Project, will be capturing and treating about 450,000 cfm of odorous air.

Kellogg Supply Inc.

Kellogg Supply Inc. (area #7), an independent operation utilizing biosolids from the plant to produce soil amendment products for resale, has been leasing property at the northwest corner of the JWPCP since the 1920's. Kellogg Supply ceased biosolids receiving and bagging operations at the JWPCP site in 2005. Kellogg will continue to lease approximately five acres for their administration building and warehouse, which is leased to a flower pot company.

Sanitation Districts' Commitment

The Sanitation Districts are committed to make every effort to reduce any odors from the JWPCP to an insignificant level. With the help of the JWPCP Citizens Advisory Committee, which has been working with the Sanitation Districts since 1978 to help the JWPCP to be a better neighbor, the Sanitation Districts will continue to make modifications and changes to the plant until that goal is achieved.

If you experience odors coming from the treatment plant, please call us to report them. Your input concerning frequency of odors, time of day, and type of odor is not only invaluable, it is critical to Sanitation Districts' staff in making further improvements. The 24-hour telephone number is (310) 830-2401 and is staffed night and day. Please call as soon as you detect an odor. When you call, plant personnel will be sent to your home to help in identifying the odor. If it is coming from the treatment plant, we will make every effort to eliminate the source of the odor.

FLETCHER OIL REFINERY COMPANY (FORCO) PROPERTY

The Sanitation Districts purchased the FORCO property next to the JWPCP (area #14) in 2000 as a logical addition for future operations. The site contained contaminated soil and underlying groundwater resulting from the prior use of the property. Street Environmental Corp. was hired to demolish and remove the structures on the property and clean the soil and groundwater below the former refinery. To date, everything has been completed except the deep soil and groundwater cleaning. The cleaning process for the deep soil and groundwater has begun and 37 vapor extraction wells have been installed. Air is pumped through the groundwater and deep soils and the hydrocarbon vapors are removed. The hydrocarbon vapors are sent to a vapor extraction unit that removes the hydrocarbons and releases carbon dioxide and water vapor. This process will continue until all of the hydrocarbons are removed.

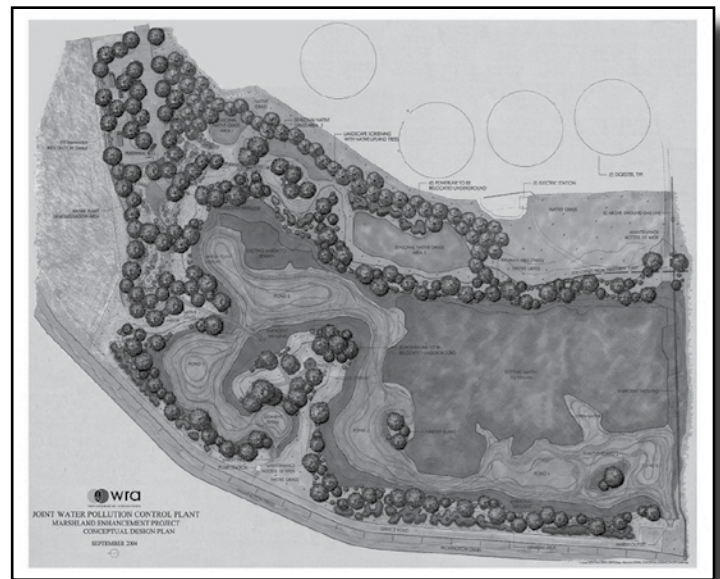
In 2004, the City of Carson approved a General Plan that rezoned the FORCO property from heavy industrial to light industrial. The Sanitation Districts opposed that change because it would not allow the use of the property for potential future use as a part of the treatment plant. The Sanitation Districts challenged the General Plan and ultimately prevailed

with a decision that required the General Plan to return the zoning to heavy industrial. The property will not be used for solids processing, composting, or any solid waste management facilities.

The Sanitation Districts will maintain our commitment to odor control for any future facilities that may be built on the property. The Sanitation Districts will make improvements to the FORCO property to make it more aesthetically pleasing to the community. The perimeter will be landscaped to match the existing JWPCP landscaping. The Sanitation Districts will continue our effort to control any dust generated from the property.

MARSHLAND RESTORATION PROJECT

The Marshland Restoration Project provides for the maintenance and enhancement of the 17-acre freshwater marsh area (area #8) located on the Sanitation Districts' property at the corner of Sepulveda Blvd. and Figueroa Street. In 2006, the Sanitation Districts hired a contractor to rid the marshland of non-native plants. The Sanitation Districts recently hired contractors to collect native plants, improve the water flow through the marshland, construct educational and viewing facilities, and landscape the area with native plants. It is expected that the project should be complete and available for public tours in Fall 2008 (see artist's concept below).



COMPRESSED NATURAL GAS (CNG) FUELING STATION

The Sanitation Districts recently dedicated their newest CNG fueling station located at the southeast corner of Sepulveda Blvd. and Figueroa Street (area #13). The CNG fueling station joins the Sanitation Districts' other station in Whittier in a continuation of the Sanitation Districts' efforts to contribute to the backbone for a clean fuel infrastructure in our service area. We have begun to purchase CNG vehicles to replace some of the operational fleet at the JWPCP. CNG vehicles emit 90% less carbon monoxide, 60% less particulate matter, 50% less oxides of nitrogen, and 20% less greenhouse gasses (carbon dioxide) than equivalent diesel vehicles. The station will be open for Sanitation Districts and public use 24-hours per day, 7-days per week.

CLEARWATER PROGRAM

The Sanitation Districts are beginning a Facilities Planning process for their Joint Outfall System (JOS), a large regional sewerage system that includes the JWPCP (see map on front page). This planning process is called the Clearwater Program. The Clearwater Program will prepare a blueprint for the future of the JOS and will include a review of aging infrastructure in the JOS. The need and options for a new tunnel and ocean outfall to transport the treated water from the JWPCP to the ocean will be evaluated as a part of the Clearwater Program. Additional information can be obtained by visiting www.clearwaterprogram.org.

JWPCP NEIGHBORSTOUR

In order to familiarize you with our operations, the Sanitation Districts wish to invite you to attend a tour of the JWPCP. The tour will be held on Saturday, September 8, 2007, at 9:30 a.m. The tour will last approximately 1½ hours. Coffee, donuts, and punch will be served prior to the tour. In order to allow us to prepare for the tour, please RSVP by calling (562) 699-7411, extension 2300 by Wednesday, August 29, 2007. We are looking forward to seeing you at the tour.

GIVE US A CALL

We are committed to being a good neighbor but we can't do it without your help. If you have any comments or questions about the operations at the JWPCP or about the Sanitation Districts, please do not hesitate to call or e-mail Ken Rademacher, JWPCP Manager, at (310) 830-2400, Ext. 5245 (krademacher@lacsdsd.org), or Don Avila, Information Officer, at (562) 699 7411, Ext. 2304 (davila@lacsdsd.org). You can also obtain additional information by going to our web site at www.lacsdsd.org.