

To be held at the OFFICE OF THE DISTRICT
 1955 Workman Mill Road, Whittier, California

In response to concerns about the Novel Coronavirus (COVID-19), and in accordance with the provisions of California Government Code Section 54953(e), Directors will attend these meetings via teleconference. To join the meeting, click <https://us02web.zoom.us/j/8091438308> or enter the Meeting ID 809 143 8308 into the Zoom app on your smartphone or computer. Alternatively, you may join by phone by calling (669) 900-9128 and entering the Meeting ID. You may find further information at: <http://www.lacsd.org/agendas>

THE DISTRICT MAY TAKE ACTION ON ANY AGENDA ITEM LISTED BELOW

MONDAY February 28, 2022 At 1100 A.M.

Governing Body	Director	Alternate
SANTA CLARITA	GIBBS	MCLEAN
SANTA CLARITA	WESTE (Chairperson)	MCLEAN
LOS ANGELES COUNTY	MITCHELL	BARGER

1. Public Comment
2. Receive and Order Filed as Follows:
 - (a) Action Appointing Mr. Jason Gibbs as Second Director of the City of Santa Clarita
 - (b) Certificate of Ms. Holly Mitchell, Presiding Officer of the Board of Supervisors of the County of Los Angeles
3. Approve Minutes of Special Meeting Held October 25, 2021
4. Approve September, October, November, and December 2021 Expenses in Amount of \$24,907,131.32

Summary: Local District expenses represent costs incurred for operations, maintenance, and capital projects that are the sole responsibility of the individual District. Allocated expenses represent the District’s proportionate share of expenses made by District No. 2, the Administrative District, on its behalf pursuant to the Joint Administration Agreement. This Agreement provides for the joint administration and technical support for all of the signatory Districts along with the methodology for determining the proportionate costs for each District. A listing of Districts’ payments and previously approved budgets can be found on the Districts’ website at lacsd.org/financial-documents. This item is consistent with the Districts’ Guiding Principle of commitment to fiscal responsibility and prudent financial stewardship.

Local District Expenses:	
Operations & Maintenance (O & M)	\$ 8,252,889.24
Capital	14,816,870.53
Allocated Expenses:	
Joint Administration	716,366.58
Technical Support	<u>1,121,004.97</u>
Total Expenses	<u>\$24,907,131.32</u>
5. Approve *Resolution of the Board of Directors of Santa Clarita Valley Sanitation District of Los Angeles County Proclaiming a Local Emergency, Ratifying the Proclamation of a State of Emergency on March 4, 2020 by California Governor and Authorizing Remote Teleconference Meetings of the Legislative Body*

Summary: The Governor’s two executive orders (N-29-20 & N-08-21), under which the agency has been conducting our teleconferenced meetings, during the continued existence of the Governor’s proclaimed state of COVID-19 emergency, will be conducted under the provisions of AB 361 which added California Government Code Section 54953(e), to the Brown Act. Under the provisions of AB 361 (Government Code Section 54953(e), at their first next meeting, each District must adopt, by majority vote, an initial resolution making certain findings about the continuing COVID state of emergency and health and safety risks of conducting their meeting in person. By statute, this Resolution and its referenced findings, are only legally valid for 30 days. The Resolution is attached to the agenda.

6. Re: Annexation No. 1109 to District
- (a) Adopt Resolution for Making Application to Local Agency Formation Commission (LAFCO) for Annexation and Consent to Waiver of Protest Proceedings
 - (b) Adopt Joint Resolution with County of Los Angeles, Greater Los Angeles County Vector Control District, Antelope Valley Resource Conservation District, and Santa Clarita Valley Water Agency Approving and Accepting Negotiated Exchange of Property Tax Revenues Resulting from Annexation
- Summary: Annexation No. 1109 consists of one existing single-family home. Each annexation to the District's service area requires adoption of two resolutions by the Board. The first resolution authorizes submittal of the annexation application to LAFCO and consents to a waiver of the LAFCO protest hearing. The second resolution is a joint resolution with agencies that already provide services to the proposed annexation territory agreeing to the amount of property tax revenue that will be apportioned to the District in accordance with the Revenue and Taxation Code. A data sheet, map, staff report, and Notice of Finding are attached.
7. Receive and Order Filed [Annual Comprehensive Financial Report](#) (ACFR) for Fiscal Year Ending June 30, 2021
- Summary: Copies of the Districts' ACFR for the fiscal year ending June 30, 2021, which includes the annual audit required by state and federal laws, have been previously distributed to the Directors. This item is consistent with the Districts' Guiding Principles of commitment to fiscal responsibility and prudent financial stewardship; and to protect financial and facility assets through prudent investment and maintenance programs.
8. Re: Energy Related Services Provided by Calpine Energy Solutions, LLC (Calpine)
- (a) Approve and Order Executed Documents for Purchase of Electricity and Related Services Through December 31, 2030 as follows:
 - 1. [Addendum for Tiered Pricing Fixed Quantity Electricity - Southern California Edison \(SCE\) Locations](#)
 - 2. [Supplemental Addendum for Renewable Portfolio Standards](#) - SCE Locations
 - (b) Authorize Chief Engineer and General Manager to Execute Future Addenda, Amendments, Confirmations, and Related Documents with Calpine Regarding Purchase of Electricity and Related Attributes Through December 31, 2030
- Summary: The Districts purchase electricity from an Electric Service Provider (ESP) under California's Direct Access program. In 2019, the Board executed various documents with Calpine for purchase of electricity and related attributes through December 31, 2024. In 2021, Calpine submitted a proposal to offer the Districts long-term price stability. The proposal offers lower prices for electricity products and extends ESP services through December 31, 2030. From time to time, additional addenda and confirmations are needed to execute and schedule sale and purchase of electricity and related attributes, and authority is requested for the Chief Engineer and General Manager to execute such documents. Staff has determined that approval of the Agreement does not constitute a "Project" under the California Environmental Quality Act (CEQA) pursuant to California Public Resources Code Section 21065 and Title 14 of the California Code of Regulations ("CEQA Guidelines") Section 15378. This item is consistent with the Districts' Guiding Principle of commitment to fiscal responsibility and prudent financial stewardship.
9. Re: Wastewater Service Charge
- (a) Order Wastewater Service Charge Report, Containing Description of Each Parcel and Amount of Proposed Wastewater Service Charge for Fiscal Year 2022-23 for Each Parcel (\$370 Per Single-Family Home), Filed with Clerk of Board of Directors of District
 - (b) Establish Date, Time, and Place for Public Hearing on Report; Order Publication of Required Public Notices, and Authorize Secretary to the Board to Revise Date, Time, and Place for Public Hearing if Required Due to Scheduling Conflict
- Summary: Filing of the Service Charge Report is required each year in order to collect the wastewater service charge on the property tax roll. No rate increases are recommended for fiscal year 2022-23. A letter discussing the service charge rate, the fiscal year 2022-23 preliminary budget, and related matters accompanies the agenda. This item is consistent with the Districts' Guiding Principles of commitment to fiscal responsibility and prudent financial stewardship; and to plan for both short-term and long-term needs to minimize the need for significant rate increases.

10. Approve and Order Executed [*Amendment to Takeover Agreement*](#) (Amendment) with The Newhall Land and Farming Company (Newhall) and Newhall Ranch Sanitation District for Mission Village Sewerage Facilities

Summary: As required in the Newhall Ranch Conceptual Sewer Master Plan approved by the District, Newhall has extended the District’s sewerage system by constructing two trunk sewers in Magic Mountain Parkway (the Sewerage Facilities) in accordance with District’s specifications and at no cost to the District in order to convey wastewater from the Mission Village phase of the Newhall Ranch development and parts of the District to the Valencia Water Reclamation Plant. In accordance with the Takeover Agreements approved by the Board in March 2018, the District will ultimately own and operate the Sewerage Facilities. Newhall has constructed homes at Mission Village and desires to utilize the Sewerage Facilities, but has not yet completed various administrative tasks required to effectuate the District’s takeover. The proposed Amendment permits Newhall to operate the Sewerage Facilities on an interim basis and designates Newhall as the responsible party in case of any sewage spills until the District accepts ownership. Additionally, the Amendment eliminates the requirement in the Takeover Agreements for Newhall to grant easements for the Sewerage Facilities since the District has statutory rights to own, operate and maintain facilities in public rights-of-way. Staff has determined that approval of the Amendment is exempt or otherwise not subject to the provisions of the California Environmental Quality Act (CEQA) pursuant to California Public Resources Code Section 21084 and CEQA Guidelines Section 15301. This item is consistent with the Districts’ Guiding Principle of commitment to continual improvement.

11. Re: Update on Senate Bill 9 (SB 9) – Housing Development: Approvals

Summary: SB 9, which was signed by the Governor on September 16, 2021, contains provisions intended to encourage the development of new smaller and more affordable housing in urban areas of California. The provisions include the encouragement of the installation of duplexes and requires local jurisdictions to ministerially approve a parcel map for a lot split if the proposed lot split meets specified criteria. SB 9 has the potential to add approximately 714,000 “market-feasible” new units in the state, of which 127,000 would be in Los Angeles County. The Chief Engineer and General Manager will discuss the potential implications of SB 9 for the Sanitation District.

12. CLOSED SESSION – Conference with Legal Counsel Pursuant to *California Government Code Section 54956.9(d)(1)* - Existing Litigation – Five Cases: *Affordable Clean Water Alliance v. Santa Clarita Valley Sanitation District*, Los Angeles County Superior Court Cases Nos. BS 145869; BS 161742; BS 170983; 19 STCPO 3670, and 21STCP03579

Summary: The Chief Engineer and General Manager and District Counsel will discuss this matter in closed session.

Adjourn

Status Report: Prior to or during the meeting session, the Chief Engineer and General Manager may update the Directors on various matters concerning the Districts that may be of current interest to the Directors.

Public Comment: Members of the public may address the Board of Directors on any item shown on the agenda or matter under the Board’s authority. A “Request to Address Board of Directors” form is available. In compliance with the Americans with Disabilities Act, if you require special assistance to participate in this meeting, please contact the Secretary to the Boards’ Office (562) 908-4288, extension 1100. Notification of 48 hours prior to the meeting will enable staff to make reasonable arrangements to ensure accessibility to this meeting. (28CFR 35.101 et seq. ADA Title II).

Document Requests: Links to supporting documents are available online at the time of posting. Agendas and supporting documents or other writings that will be distributed to Board members in connection with matters subject to discussion or consideration at this meeting that are not exempt from disclosure under the Public Records Act are available for inspection following the posting of this agenda at the office of the Secretary to the Boards of Directors located at the Districts’ Joint Administration Building, 1955 Workman Mill Road, Whittier, California, 90601, or at the time of the meeting at the address posted on this agenda.

RESOLUTION OF THE BOARD OF DIRECTORS OF THE
SANTA CLARITA VALLEY SANITATION DISTRICT OF LOS ANGELES COUNTY
PROCLAIMING A LOCAL EMERGENCY, RATIFYING THE PROCLAMATION
OF A STATE OF EMERGENCY ON MARCH 4, 2020 BY CALIFORNIA GOVERNOR AND
AUTHORIZING REMOTE TELECONFERENCE MEETINGS OF THE LEGISLATIVE BODY

WHEREAS, the Santa Clarita Valley Sanitation District of Los Angeles County (“District”) is committed to preserving and nurturing public access and participation in meetings of the District’s Board of Directors and committees; and

WHEREAS, all meetings of the District’s Board of Directors are open and public, pursuant to the requirements of the Ralph M. Brown Act (California Government Code Sections 54950-54963) (the “Brown Act”), so that any member of the public may attend, participate, observe and watch the District’s Board of Directors conduct business; and

WHEREAS, the Brown Act, Section 54953(e), allows for conducting and participating in meetings by members of a legislative body, without compliance with the requirements of the Brown Act Section 54953(b)(3), subject to the existence of certain conditions; and

WHEREAS, a required condition under the Brown Act Section 54953(e) is the declaration of a state of emergency by the Governor pursuant to California Government Code Section 8625, proclaiming the existence of conditions of disaster or of extreme peril to the safety of persons and property within California caused by the conditions outlined and described in California Government Code Section 8558; and

WHEREAS, a proclamation of a state of emergency is made when there is an actual incident, threat of disaster, or extreme peril to the safety of persons and property within the jurisdictions that are within the District’s boundaries, caused by natural, technological, or human-induced disasters; and

WHEREAS, it is further required that the state or local officials have imposed or recommended measures to promote social distancing, or the Board of Directors of the District have held a meeting where it considered and determined that meeting in person would present imminent risks to the health or safety of attendees; and

WHEREAS, such conditions now exist in the District as Governor Newsom declared a State of Emergency on March 4, 2020 as a result of the threat of COVID-19; and

WHEREAS, the Centers for Disease Prevention and Control, in its publication “How to Protect Yourself & Others” updated August 13, 2021, have recommended social distancing practices, including staying 6 feet away from others and avoiding crowds and poorly ventilated spaces in order to protect individuals and others from COVID-19; and

WHEREAS, the County of Los Angeles Department of Public Health Order of the Health Officer issued September 17, 2021 (the “County Order”) includes a finding that the existing community transmission of COVID-19 in Los Angeles County remains high and continues to present a high risk of infection and harm to the health of those who are not and cannot be vaccinated against COVID-19 especially when there is an absence of capacity limits and physical distancing requirements for both indoor and outdoor settings. The County Order further finds that COVID-19 infection remains a significant health hazard to all residents; and

WHEREAS, the District’s Board of Directors does hereby find that the ongoing and significant risks associated with COVID-19 infection, especially in the absence of capacity limits and physical distancing requirements for indoor activities, on those who are not and cannot be vaccinated, and that COVID-19 infection remains a significant health hazard to all residents, has caused, and will continue to cause, conditions of peril to the safety of persons within the District that are likely to be beyond the control of services, personnel, equipment and facilities of the District, and desires to proclaim a local emergency and ratify the proclamation of a state of emergency by the Governor of the State of California, and further, ratify the County Order findings related to the ongoing health hazards of COVID-19; and

WHEREAS, as a consequence of the declared state of emergency and the local emergency, the Board of Directors of the District does hereby find that the District shall continue to conduct its meetings in accordance with the provisions and requirements of the Brown Act Section 54953(e), and that the legislative

bodies of the District shall comply with the requirements to provide the public with access to, and an opportunity to comment at all meetings of the District's legislative bodies in accordance with the requirements of the Brown Act Section 54953(e)(2); and

WHEREAS, the District will continue its practice of live streaming its meetings via the Zoom software platform which allows members of the public to observe and participate in the meetings via video or call-in options, and will continue to offer members of the public an opportunity to make oral comments during the meetings and/or submit written comments before the meetings.

NOW, THEREFORE, THE BOARD OF DIRECTORS OF THE SANTA CLARITA VALLEY SANITATION DISTRICT OF LOS ANGELES COUNTY DOES HEREBY RESOLVE AS FOLLOWS:

Section 1. Recitals. The Recitals set forth above are true, correct, and are incorporated in this Resolution by reference.

Section 2. Proclamation of Local Emergency. The Board of Directors of the District does hereby proclaim that a local emergency now exists throughout the territory of the District and, as described in the County Order, there remains evidence of sustained and high community transmission rates of COVID-19 resulting in high risks of infection and harm to the health of those who are not and cannot be vaccinated against COVID-19, especially when there is an absence of capacity limits and physical distancing requirements for both indoor and outdoor settings, and COVID-19 infection remains a significant health hazard to all residents of the District.

Section 3. Ratification of Governor's Proclamation of a State of Emergency. The District's Board of Directors hereby ratifies the Governor of the State of California's Proclamation of a State of Emergency, effective as of its issuance date of March 4, 2020.

Section 4. Remote Teleconference Meetings. The Chief Engineer and General Manager, staff and legislative bodies are hereby authorized and directed to take all actions necessary to carry out the intent and purpose of this Resolution including, without limitation, conducting open and public meetings in accordance with the Brown Act Section 54953(e) and all other applicable provisions of the Brown Act.

Section 5. Effective Date of Resolution. This Resolution shall take effect immediately upon its adoption and shall be effective until the earlier of (i) 30 days after the date of this resolution, or such time that the District's Board of Directors adopts a subsequent resolution in accordance with the Brown Act Section 54953(e)(3) to extend the time during which the legislative bodies of the District may continue to teleconference without compliance with the requirements of the Brown Act Section 54953(b)(3).

PASSED AND ADOPTED by the Board of Directors of the Santa Clarita Valley Sanitation District of Los Angeles County this 28th day of February 2022 by the following vote:

AYES:

NOES:

ABSENT:

ABSTAIN:

Chairperson

SANTA CLARITA VALLEY SANITATION DISTRICT OF LOS ANGELES COUNTY

PROPOSED ANNEXATION NO. 1109

AGENDA DATE: Resolution Making Application to LAFCO..... February 28, 2022

LOCATION: Thomas Brothers Map Page 4369 Grid F7
Located on Sloan Canyon Road approximately 600 feet north west of its intersection
with Quail Valley Road, all within Unincorporated Los Angeles County.

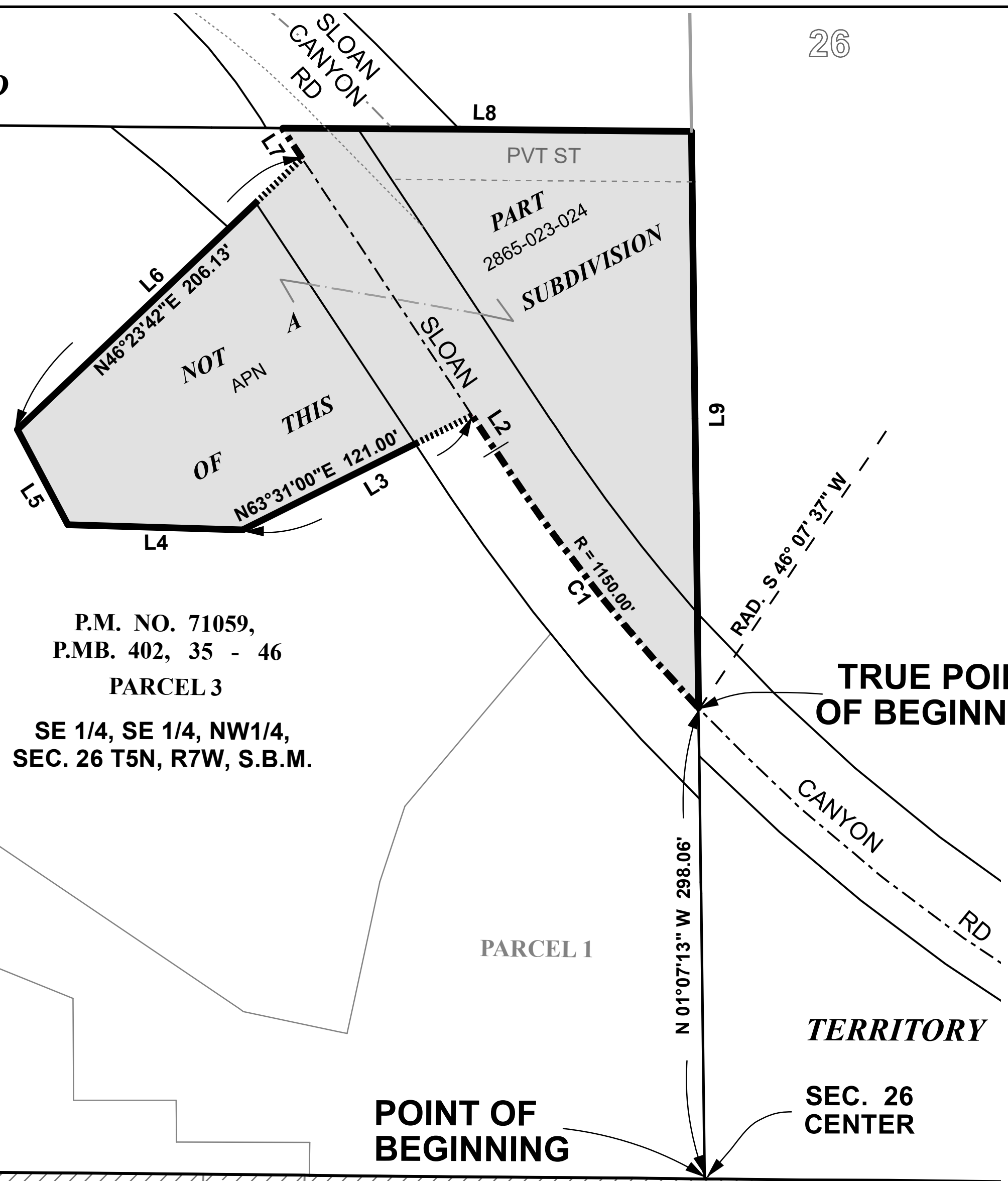
PROCESSING FEES:	District	\$ 1,950.00
	Local Agency Formation Commission	2,500.00
	State Board of Equalization	<u>350.00</u>
	Total:	\$ <u><u>4,800.00</u></u>

DESCRIPTION & REMARKS: The annexation consists of one existing single-family home.

SECTION
UNINCORPORATED

26

UNINCORPORATED
TERRITORY



P.M. NO. 71059,
P.M.B. 402, 35 - 46
PARCEL 3
SE 1/4, SE 1/4, NW1/4,
SEC. 26 T5N, R7W, S.B.M.

PARCEL 2

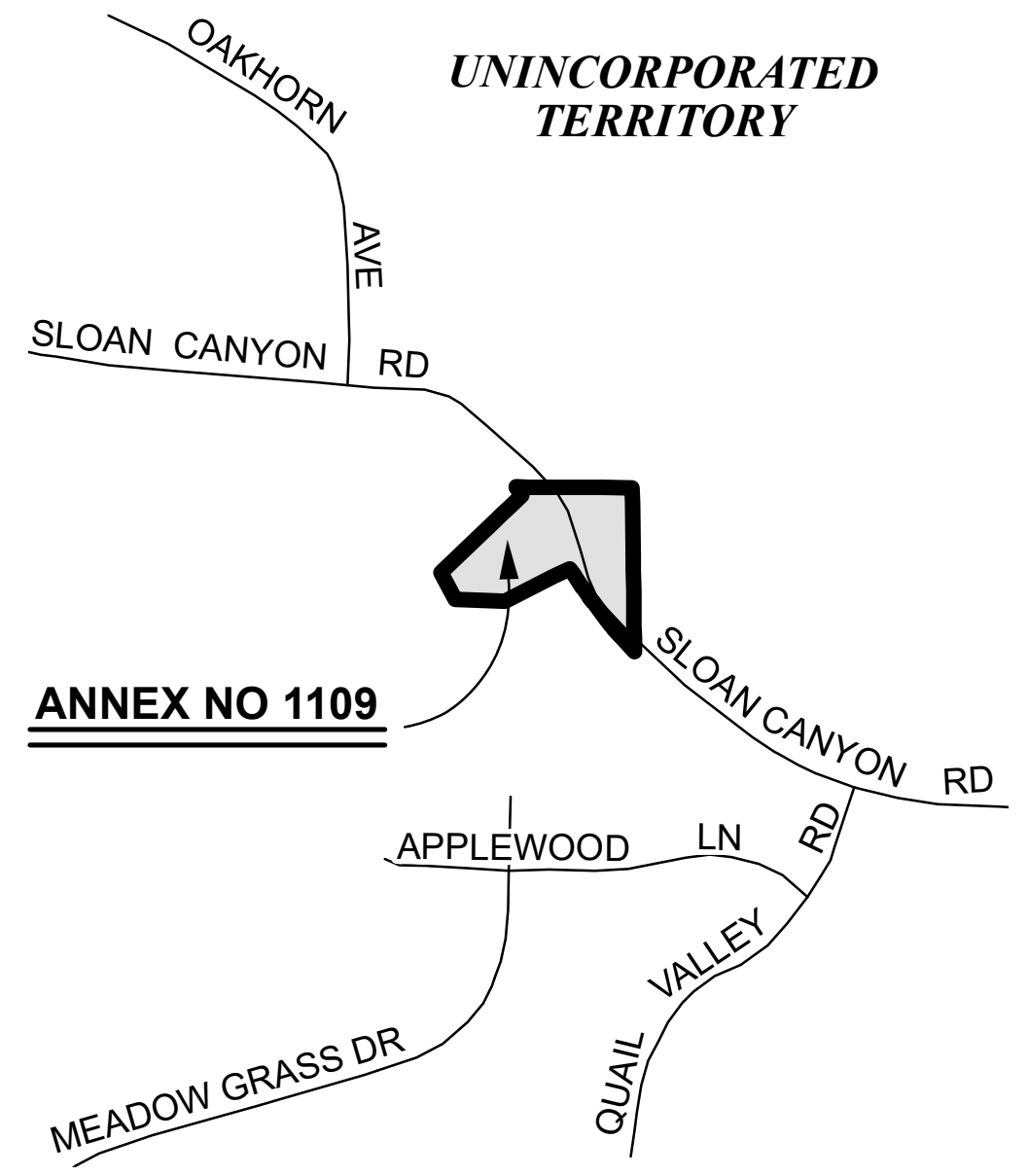
PARCEL 1

POINT OF
BEGINNING

TRUE POINT
OF BEGINNING

TERRITORY

SEC. 26
CENTER

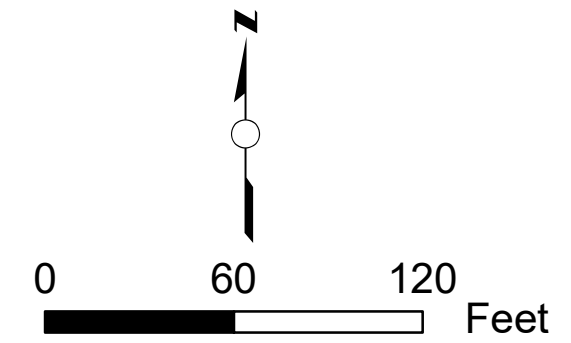


ANNEX NO 1109

VICINITY MAP
NO SCALE

COURSE DATA

C1 R= 1150.00'	L= 200.85'	D= 10°00'25"
L2 N 33°51'58" W	34.44'	
L3 S 63°31'00" W	161.33'	
L4 N 88°21'40" W	110.98'	
L5 N 27°49'12" W	68.21'	
L6 N 46°23'42" E	246.71'	
L7 N 33°51'58" W	24.02'	
L8 S 89°53'45" E	259.83'	
L9 S 01°07'13" E	366.03'	



T 5 N, R 7 W, S.B.M.

- Annexation No. 1109 shown thus
- Boundary of Santa Clarita Valley Sanitation District
- Prior to Annexation No. 1109 shown thus
- Prior Annexations shown thus
- Area of Annexation 1.998 Acres

LA County Assessor Landbase,
CAMS Centerline, DPW City boundary
LA County Sanitation Districts:
AnnexationLayer and District Layer

SANTA CLARITA VALLEY
SANITATION DISTRICT
OF LOS ANGELES COUNTY, CA
OFFICE OF CHIEF ENGINEER
ROBERT C. FERRANTE
CHIEF ENGINEER & GENERAL MANAGER

ANNEXATION NO. 1109
TO
SANTA CLARITA VALLEY
SANITATION DISTRICT

Recorded:

NOTICE OF FINDING/CERTIFICATE OF FILING

ANNEXATION NO. 1109 TO SANTA CLARITA VALLEY SANITATION DISTRICT

THOMAS BROTHERS MAP PAGE 4369 GRID F7

The annexation consists of one existing single-family home.

1. **BASED UPON REVIEW AND STUDY, I FIND AND CERTIFY THAT:**

- The annexation **is exempt** from the provisions of the California Environmental Quality Act, pursuant to the State CEQA Guidelines,

Section: 15319(a)

Reason: The annexation consists of areas containing existing structures developed to the density allowed by the current zoning

- The **Negative Declaration** is adequate for consideration of the annexation.

- The **Environmental Impact Report** is acceptable for consideration of the annexation.

2. The subject annexation has been set for consideration before the Board of Directors of Santa Clarita Valley Sanitation District at their meeting to be held on February 28, 2022 at the time and place as provided for the meeting of said date.
3. The subject annexation and all related documents are on file in the office of the Chief Engineer and General Manager, Los Angeles County Sanitation Districts, 1955 Workman Mill Road, (P.O. Box 4998) Whittier, California and may be examined by any interested person for further particulars. Telephone: (562) 908-4288, extension 2708.



Stan Pegadiotes
Division Engineer
Facilities Planning Department

STAFF REPORT ON PROPOSED ANNEXATION NO. SCV-1109

RECOMMENDATION:

Adopt resolution making application to the Local Agency Formation Commission for annexation and approve tax sharing resulting from annexation.

DESCRIPTION:

PROPERTY OWNERS	ANNEX.NO.	TOTAL ACRES	PROJECT NUMBER	PROJECT DESCRIPTION	LOCATION
Suzanne Ferrell	1109	1.998	2865-023-024	One existing single-family home	Thomas Brothers Map Page 4369, Grid F7. Located on Sloan Canyon Road approximately 600 feet northwest of its intersection with Quail Valley Road, all within Unincorporated Los Angeles County.

CALIFORNIA ENVIRONMENTAL QUALITY ACT (CEQA) COMPLIANCE:

- (1) The *Request for Annexation* application describes the project as an existing single-family home. Based on review of the *Request for Annexation* application, District staff has concluded that the project proposed in the application is exempt from the provisions of CEQA, pursuant to State Guidelines, Section 15319(a)) since it contains existing structures developed to the density allowed by the Santa Clarita Valley Area Plan Comprehensive Update..
- (2) The estimated cumulative build out wastewater flow from all previous annexations including the subject annexation will not exceed the current Santa Clarita Valley Joint Sewerage System's (SCVJSS) permitted treatment capacity of 28.1 mgd.

SYSTEM CAPACITY

PROPOSED PROJECT	PROJECT ESTIMATED FLOW (MGD)	CUMULATIVE FLOW (MGD)			PRESENT AVG SYSTEM FLOW (MGD)	SYSTEM CAPACITY (MGD)
		BEFORE THIS ANX	AFTER THIS ANX	AFTER THIS BOARD MTG		
An existing single-family home.	0.0003	24.9529	24.9532	24.9532	19.9	Current: 28.1 2015 Plan:34.1

Note: The cumulative flow represents the maximum potential flow assuming the annexation is built out in accordance with the application. Actual development may be less than that proposed in the application. The timing of wastewater generation will depend on the phasing of development, and connections will not be approved unless there is sufficient system capacity.

ADDITIONAL INFORMATION

Contiguous to the District? YES NO Within the City of Santa Clarita? YES NO

According to the Los Angeles County Department of Public Works, Building and Safety Division, Santa Clarita Office, permits have been issued for this site.

JOINT RESOLUTION OF THE BOARD OF SUPERVISORS OF THE COUNTY OF LOS ANGELES
ACTING IN BEHALF OF

Los Angeles County General Fund

Los Angeles County Library

Los Angeles County Road District #5

Los Angeles County Consolidated Fire Protection District

Los Angeles County Flood Control

THE BOARD OF DIRECTORS OF SANTA CLARITA VALLEY SANITATION DISTRICT OF LOS
ANGELES COUNTY, AND THE GOVERNING BODIES OF

Greater Los Angeles County Vector Control District

Antelope Valley Resource Conservation District

Santa Clarita Valley Water Agency

APPROVING AND ACCEPTING NEGOTIATED EXCHANGE OF PROPERTY TAX REVENUES
RESULTING FROM ANNEXATION TO SANTA CLARITA VALLEY SANITATION DISTRICT

"ANNEXATION NO. 1109"

WHEREAS, pursuant to Section 99 and 99.01 of the Revenue and Taxation Code, prior to the effective date of any jurisdictional change which will result in a special district providing a new service, the governing bodies of all local agencies that receive an apportionment of the property tax from the area must determine the amount of property tax revenues from the annual tax increment to be exchanged between the affected agencies and approve and accept the negotiated exchange of property tax revenues by resolution; and

WHEREAS, the governing bodies of the agencies signatory hereto have made determinations of the amount of property tax revenues from the annual tax increments to be exchanged as a result of the annexation to Santa Clarita Valley Sanitation District entitled *Annexation No. 1109*;

NOW, THEREFORE, BE IT RESOLVED AS FOLLOWS:

1. The negotiated exchange of property tax revenues resulting from the annexation of territory to Santa Clarita Valley Sanitation District in the annexation entitled *Annexation No. 1109* is approved and accepted.

2. For each fiscal year commencing on July 1, 2021, or after the effective date of this jurisdictional change, whichever is later, the County Auditor shall transfer to Santa Clarita Valley Sanitation District a total of 0.9422549 percent of the annual tax increment attributable to the land area encompassed within *Annexation No. 1109* as shown on the attached Worksheet.

3. No additional transfer of property tax revenues shall be made from any other tax agencies to Santa Clarita Valley Sanitation District as a result of annexation entitled *Annexation No. 1109*.

4. No transfer of property tax increments from properties within a community redevelopment project, which are legally committed to a Community Redevelopment Agency, shall be made during the period that such tax increment is legally committed for repayment of the redevelopment project costs.

5. If at any time after the effective date of this resolution, the calculations used herein to determine initial property tax transfers or the data used to perform those calculations are found to be incorrect thus producing an improper or inaccurate property tax transfer, the property tax transfer shall be recalculated and the corrected transfer shall be implemented for the next fiscal year.

The foregoing resolution was adopted by the Board of Supervisors of the County of Los Angeles, the Board of Directors of Santa Clarita Valley Sanitation District of Los Angeles County, and the governing bodies of Greater Los Angeles County Vector Control District, Antelope Valley Resource Conservation District, and Santa Clarita Valley Water Agency, signatory hereto.

SANTA CLARITA VALLEY SANITATION
DISTRICT OF LOS ANGELES COUNTY

Chairperson, Board of Directors

ATTEST:

Secretary

Date

(SIGNED IN COUNTERPART)



February 18, 2022

Board of Directors
Santa Clarita Valley Sanitation District
of Los Angeles County

Directors:

Wastewater Revenue Program for Fiscal Year 2022-23

The agenda for the February 28, 2022 meeting of the Santa Clarita Valley Sanitation District Board of Directors contains an item regarding the District's service charges for residential, commercial, and small industrial dischargers which are collected on the property tax roll.

The current service charge rate has previously been adopted by the Board and no changes are being proposed to these rates. However, in order to continue to collect the service charge on the property tax roll the Board must take certain actions. Specifically, pursuant to state law, the Board must: (1) order a Service Charge Report be filed with the District Clerk, (2) establish the date, time, and place for a public hearing on the report; and (3) direct the publication of the required notices.

SERVICE CHARGE AND SURCHARGE RATES

The service charge rate is currently \$370 per year per single-family home. No change to the adopted rate is proposed for fiscal year 2022-23. Multi-family residential units will pay 60% of the adopted single-family home rate and condominiums will pay 75% of the adopted single-family home rate. Likewise, commercial and industrial dischargers will pay in proportion to their use of the wastewater management system compared to a single-family home. Dischargers with verified low water usage (particularly seniors and retirees) may also qualify for a reduced charge.

BUDGET FOR FISCAL YEAR 2022-23

Enclosed for your review is the preliminary budget for fiscal year 2022-23; a list of proposed capital projects; a list of user fees; information on the monies set aside in various funds/reserves; and an explanation of terms used in the budget. The funds and reserves were established and funded in accordance with the District's Wastewater Financial Reserve Policy. A final budget will be presented to the Board for consideration in June as part of the overall budgetary process, adoption of which will authorize budget appropriations.

LOW WATER REBATE PROGRAM

Because the cost of metering wastewater discharges from individual parcels is impractical and cost prohibitive, discharges are estimated using standard loading factors based on the size and types of facilities located on the parcel. With the ongoing efforts by local communities to conserve water and install low-flow plumbing fixtures, many parcels may be discharging at lower rates than is currently estimated. The Districts' low water rebate

program allows parcel owners to apply for a reduction in their service charge rate based on their actual water usage. Staff has conducted a concerted public outreach program, including information on the program in our Proposition 218 notices, newspaper advertisements, and the Districts' website, to ensure that parcel owners are aware of the program.

SUMMARY OF REQUIRED ACTIONS

As previously discussed, the Board must order the filing of a Service Charge Report (enclosed) with the District Clerk. The Board must also schedule a public hearing and instruct the District Clerk to publish newspaper notices to inform the public of the hearing. After the close of its public hearing, the Board will consider adoption of the Service Charge Report, as is required under the California Health and Safety Code in order for the District to continue to collect the previously approved wastewater service charge as a separate line item on the property tax roll. This is the most cost-effective and efficient means of collecting the service charges. It is recommended that the public hearing be set for the date, time and location listed on the agenda.

At the June Board meeting, a final budget will be presented to the Board of Directors for consideration as part of the overall budgetary process, adoption of which will authorize budget appropriations. In addition, the Board must take certain administrative actions that are required of all agencies that receive ad valorem taxes. These include establishing by resolution the amount of the tax levy Districts will request from the Los Angeles County Tax Collector and adopting a limit on authorized expenditures of tax proceeds.

Very truly yours,



Robert C. Ferrante

RCF:gc
Enclosures

SANTA CLARITA VALLEY SANITATION DISTRICT SERVICE CHARGE REPORT FOR FISCAL YEAR 2022-23

INTRODUCTION

The Santa Clarita Valley Sanitation District of Los Angeles County (District) encompasses portions of the city of Santa Clarita and some of the surrounding unincorporated Los Angeles County.

The District provides wastewater management services for the area described above. The District is responsible for the operation and maintenance of the Saugus and Valencia Water Reclamation Plants and the large trunk sewers which convey wastewater to these facilities. These services are essential to protect the public health of the people served by the system.

The District must provide the revenue required to operate and maintain its facilities. The general revenue sources currently available to the District include a pro rata share of the ad valorem (property) taxes, service charges, industrial wastewater surcharges, grants, state low-interest loans, interest income, contract revenue and reserves. Any surplus will be transferred to designated reserves to meet targeted reserve requirements.

PROPOSED SYSTEM DESCRIPTION

The service charge revenue required pursuant to the *Master Service Charge Ordinance of Santa Clarita Valley Sanitation District of Los Angeles County* will be allocated among classes of developed parcels of real property on the basis of use of the sewerage system. The revenue derived from the service charge will be used for operation and maintenance and capital costs.

All industrial dischargers in the District discharging more than 1.0 million gallons per year are required to file a wastewater surcharge statement as prescribed in the *Wastewater Ordinance* to pay their appropriate share of the costs based on their use of the sewerage system. All other users of the sewerage system, except for contractual and local government users, will pay service charges.

The basic term used to define the service charge is a sewage unit. A sewage unit represents the average daily quantity of sewage flow and strength from a single-family home measured in terms of flow, chemical oxygen demand (COD), and suspended solids (SS). The number of sewage units (SU) per unit of measure shall be determined by the following formula:

$$\text{SU} = A \left(\frac{\text{FLOW}_{\text{avg}}}{\text{FLOW}_{\text{sfh}}} \right) + B \left(\frac{\text{COD}_{\text{avg}}}{\text{COD}_{\text{sfh}}} \right) + C \left(\frac{\text{SS}_{\text{avg}}}{\text{SS}_{\text{sfh}}} \right)$$

where:

A = The proportion of the total operation and maintenance and capital costs required for conveyance, treatment, and disposal of wastewater for the fiscal year which is attributable to flow;

B = The proportion of the total operation and maintenance and capital costs required for conveyance, treatment, and disposal of wastewater for the fiscal year which is attributable to COD;

C = The proportion of the total operation and maintenance and capital costs required for conveyance, treatment, and disposal of wastewater for the fiscal year which is attributable to suspended solids;

FLOW_{sfh} = Average flow of wastewater from a single-family home in gallons per day;

COD_{sfh} = Average loading of COD in the wastewater from a single-family home in pounds per day;

- SS_{sfh} = Average loading of suspended solids in the wastewater from a single-family home in pounds per day;
- FLOW_{avg} = Estimated flow of wastewater which will enter the sewerage system from a user in gallons per day;
- COD_{avg} = Estimated loading of COD which will enter the sewerage system from a user in pounds per day;
- SS_{avg} = Estimated loading of suspended solids which will enter the sewerage system from a user in pounds per day.

For fiscal year 2022-23, the proportions of the total operation and maintenance and capital costs attributable to flow, COD, and SS have been assigned the following values:

$$A = 0.2798$$

$$B = 0.3239$$

$$C = 0.3963$$

The service charge for each parcel is determined by multiplying the service charge rate by the number of sewage units attributable to the parcel. The sewage units attributable to a given parcel are determined by using the sewage unit formula above and the flow, COD and SS loadings from Table 1, which shows the corresponding values for each class of real property in the District. The number of sewage units attributable to a given parcel may be reduced pursuant to the terms of the *Master Service Charge Ordinance of Santa Clarita Valley Sanitation District of Los Angeles County* if the verifiable water usage attributable to the parcel is significantly less than that calculated using the values in Table 1.

Based upon presently anticipated sources of funds, the service charge rate for fiscal year 2022-23 is \$370 per sewage unit. Parcels with significantly lower water usage may be eligible for a reduced rate pursuant to the terms of the *Master Service Charge Ordinance of Santa Clarita Valley Sanitation District of Los Angeles County*.

DESCRIPTION OF PARCELS RECEIVING SERVICES AND IDENTIFICATION OF AMOUNT OF CHARGE FOR EACH PARCEL

Unless not connected to the sewerage system, all parcels of real property within the 2022-23 Tax Rate Areas (TRAs) as shown in Table 2 are receiving or benefiting from the services and facilities of the District. Additionally, the parcels listed in Table 3, which are not within the TRAs, are also receiving or benefiting from the services and facilities of the District. Said parcels are more particularly described in maps prepared in accordance with Section 327, Revenue and Taxation Code, which are on file in the office of the County Assessor, which maps are hereby incorporated herein by reference.

All commercial and institutional parcels assessed a service charge based on the Los Angeles County Assessor's current tax roll shall be charged on the basis of not less than one (1.0) sewage unit.

No charge shall be imposed on the owner or owners of any parcels as to which the fair market value of improvements is less than \$1,000 as determined on the basis of the Assessor's current tax roll. This assumption is predicated on the fact that this type of parcel would be a vacant piece of land; however, should subsequent evaluation reveal that the property is not vacant, then an appropriate service charge would be levied.

**TABLE 1
LOADINGS FOR EACH CLASS OF LAND USE**

<u>DESCRIPTION</u>	<u>UNIT OF MEASURE</u>	<u>FLOW (Gallons per Day)</u>	<u>COD (Pounds per Day)</u>	<u>SUSPENDED SOLIDS (Pounds per Day)</u>
RESIDENTIAL				
Single Family Home	Dwelling Unit	260	1.22	0.59
Condominiums	Dwelling Unit	195	0.92	0.44
Multi-Unit Residential	Dwelling Unit	156	0.73	0.35
Mobile Home Parks	No. of Spaces	156	0.73	0.35
COMMERCIAL				
Hotel/Motel/Rooming House	Room	125	0.54	0.28
Store	1000 ft ²	100	0.43	0.23
Supermarket	1000 ft ²	150	2.00	1.00
Shopping Center	1000 ft ²	325	3.00	1.17
Regional Mall	1000 ft ²	150	2.10	0.77
Office Building	1000 ft ²	200	0.86	0.45
Medical, Dental, Veterinary Clinic or Building	1000 ft ²	300	1.29	0.68
Restaurant	1000 ft ²	1,000	16.68	5.00
Indoor Theatre	1000 ft ²	125	0.54	0.28
Car Wash				
Tunnel - No Recycling	1000 ft ²	3,700	15.86	8.33
Tunnel - Recycling	1000 ft ²	2,700	11.74	6.16
Wand	1000 ft ²	700	3.00	1.58
Bank, Credit Union	1000 ft ²	100	0.43	0.23
Service Shop, Vehicle Maintenance & Repair Shop	1000 ft ²	100	0.43	0.23
Animal Kennels	1000 ft ²	100	0.43	0.23
Gas Station	1000 ft ²	100	0.43	0.23
Auto Sales	1000 ft ²	100	0.43	0.23
Wholesale Outlet	1000 ft ²	100	0.43	0.23
Nursery/Greenhouse	1000 ft ²	25	0.11	0.06
Manufacturing	1000 ft ²	200	1.86	0.70
Light Manufacturing	1000 ft ²	25	0.23	0.09
Lumber Yard	1000 ft ²	25	0.23	0.09
Warehousing	1000 ft ²	25	0.23	0.09
Open Storage	1000 ft ²	25	0.23	0.09
Drive-in Theatre	1000 ft ²	20	0.09	0.05
Night Club	1000 ft ²	350	1.50	0.79
Bowling/Skating	1000 ft ²	150	1.76	0.55
Club & Lodge Halls	1000 ft ²	125	0.54	0.27
Auditorium, Amusement	1000 ft ²	350	1.50	0.79
Golf Course and Park (Structures and Improvements)	1000 ft ²	100	0.43	0.23

<u>DESCRIPTION</u>	<u>UNIT OF MEASURE</u>	<u>FLOW (Gallons per Day)</u>	<u>COD (Pounds per Day)</u>	<u>SUSPENDED SOLIDS (Pounds per Day)</u>
COMMERCIAL				
Campground, Marina, Recreational Vehicle Park	Sites, Slips, or Spaces	55	0.34	0.14
Convalescent Home	Bed	125	0.54	0.28
Horse Stables	Stalls	25	0.23	0.09
Laundromat	1000 ft ²	3,825	16.40	8.61
Mortuary, Funeral Home	1000 ft ²	100	1.33	0.67
Health Spa, Gymnasium				
With Showers	1000 ft ²	600	2.58	1.35
Without Showers	1000 ft ²	300	1.29	0.68
Convention Center, Fairground, Racetrack, Sports Stadium/Arena	Average Daily Attendance	10	0.04	0.02
INSTITUTIONAL				
College/University	Student	20	0.09	0.05
Private School	1000 ft ²	200	0.86	0.45
Library, Museum	1000 ft ²	100	0.43	0.23
Post Office (Local)	1000 ft ²	100	0.43	0.23
Post Office (Regional)	1000 ft ²	25	0.23	0.09
Church	1000 ft ²	50	0.21	0.11

**TABLE 2
TAX RATE AREAS IN
SANTA CLARITA VALLEY SANITATION DISTRICT**

00221	00223	00227	00281	00282
00325	00326	00330	00332	00351
00353	00360	00362	00364	00386
00387	00390	00393	00397	00405
00409	00420	00431	00439	00448
00450	00508	00520	00550	00554
00564	00567	00569	00570	00584
00601	00603	00612	00613	00621
00699	00704	00708	00717	00729
00732	00769	00777	00801	00802
00803	00824	00826	00887	00896
00906	00908	00922	00933	00935
00936	00937	00947	00948	00955
00965	00966	00967	00975	00976
00977	00979	01297	01299	01327
01340	01369	01403	01616	01623
01754	01811	01862	02473	02477
02504	02603	02628	02694	02910
02927	02933	03819	03823	03824
03826	03889	04624	04951	04957
04967	05006	05798	06285	06419
06562	06594	06606	06614	06633
06634	06635	06641	06642	06646
06648	06705	06707	06786	06818
06819	06822	06823	06825	06828
07152	07231	07643	07646	07647
07648	07649	07650	07651	07653
07655	07669	07670	07673	07676
07677	07679	07711	08014	08015
08046	08129	08379	08387	08544

08556	08581	08659	08672	08674
08675	08676	08690	08704	08706
08710	08717	08733	08762	08777
08828	08845	08847	08857	08858
08865	08866	08900	08905	08907
08912	08913	08951	08970	08972
08973	08980	08982	08999	09004
09276	09298	09313	09322	09341
09358	09360	09370	09406	09423
09425	09523	09573	09579	09718
09729	09755	09785	09786	09797
09863	09865	09980	09981	09982
09984	09987	10216	10286	10292
10294	10522	10523	10524	10526
10527	10535	10536	10571	10582
10595	10596	10618	10721	10727
10732	10738	10742	10746	10754
10764	10769	10770	10771	10791
10796	10811	10813	10814	10815
10816	10817	10818	10819	10820
10821	10840	11073	11158	11162
11165	11166	11167	11181	11237
11239	11244	11245	11246	11317
11327	11351	11371	11372	11432
11454	11506	11620	11631	11634
11675	11735	11736	11766	11828
11829	11830	11833	11834	11835
11836	11850	11879	11885	11886
11888	11889	11901	11904	11906
11915	12081	12096	12097	12098
12135	12137	12147	12148	12169
12194	12195	12196	12202	12204
12205	12289	12436	12438	12446

12448	12449	12450	12458	12459
12474	12475	12478	12491	12493
12494	12500	12501	12502	12543
12544	12551	12557	12569	12594
12595	12596	12597	12605	12610
12651	12676	12686	12687	12688
12692	12702	12707	12756	12757
12778	12780	12781	12782	12783
12794	12849	12887	12925	12927
12928	12929	12936	12937	12947
12999	13000	13072	13129	13145
13147	13149	13150	13151	13163
13164	13166	13301	13322	13348
13349	13350	13351	13352	13373
13429	13443	13444	13445	13448
13449	13450	13499	13500	13503
13513	13552	13581	13601	13611
13612	13614	13641	13642	13644
13645	13646	13647	13648	13649
13652	13653	13654	13689	13690
13696	13697	13698	13699	13700
13701	13702	13704	13705	13706
13707	13727	13728	13737	13757
13759	13761	13762	13763	13768
13769	13777	13783	13784	13787
13793	13794	13798	13814	13816
13818	13819	13830	13840	13855
13866	13867	13873	13878	13879
13880	13882	13902	13968	13969
13970	13971	13972	13973	13974
13976	13977	13979	13981	13982
13989	14043	14044	14045	14048
14049	14054	14059	14076	14103

14121	14127	14128	14129	14147
14177	14178	14261	14280	14282
14286	14309	14403	14404	14424
14457	14458	14482	14493	14526
14528	14529	14535	14556	14565
14569	14579	14584	14606	14617
14647	14661	14699	14700	14701
14706	14708	14730	14741	14794
14795	14809	14810	14812	14813
14814	14822	14832	14836	14845
14859	14862	14865	14866	14875
14877	14880	14903	14910	14931
14932	14933	14935	14939	14940
14953	14960	14963	15044	15065
15072	15074	15077	15084	15089
15090	15098	15100	15110	15111
15113	15114	15115	15138	15156
15162	15220	15221	15235	15241
15242	15243	15244	15245	15246
15307	15317	15331	15353	15359
15360	15363	15364	15380	15384
15386	15387	15397	15407	15408
15409	15416	15426	15434	15438
15446	15475	15476	15478	15506
15529	15536	15552	15558	15561
15568	15569	15570	15602	15606
15615	15637	15638	15640	15641
15642	15643	15644	15646	15739
15794	15796	15798	15837	15838
15839	15840	15847	15848	15867
15868	15872	15873	15875	15878
15913	15915	15933	15959	15962
15969	15971	15972	15974	15976

15986	15990	15998	15999	16000
16008	16009	16011	16012	16038
16047	16051	16052	16064	16071
16111	16120	16126	16129	16130
16154	16169	16176	16178	16193
16306	16321	16322	16325	16333
16338	16345	16346	16348	16356
16360	16369	16378	16434	16435
16459	16460	16503	16516	16519
16528	16531	16534	16535	16538
16539	16540	16541	16543	16547
16548	16550	16551	16559	16565
16575	16579	16580	16587	16588
16603	16605	16618	16651	16656
16657	16658	16659	16670	16674
16676	16688	16689	16690	16691
16699	16700	16707	16717	16723
16733	16736	16760	16761	16767
16781	16783	16833	16836	16837
16844	16848	16850	16861	16863
16869	16872	16873	16879	16900
16911	16922	16926	16928	16935
16942	16976	16985	16990	16999
17001				

**TABLE 3
PARCEL NUMBERS SERVED BY
SANTA CLARITA VALLEY SANITATION DISTRICT
OUTSIDE OF TAX RATE AREAS**

2802003032	2803024011	2805001025	2805012014	2812009030	2825013012
2829009028	2830020028	2830020029	2830020030	2833006056	2834034001
2834034002	2836060041	2837003040	2839012004	2839012005	2839012006
2839012007	2839012008	2839012011	2839012015	2839012016	2839013003
2839013004	2839014009	2839014042	2839015022	2839019013	2839019026
2839019027	2839020024	2840008030	2840009050	2840011021	2840011022
2841006018	2841014024	2841014055	2841018056	2841018057	2841063017
2854011031	2854051016	2854051017	2854051020	2854051061	2854051066
2854051068	2854051071	2854051072	2854051073	2854052001	2854052002
2854052003	2854052004	2854052005	2854052032	2854052035	2854055040
2854055041	2865015007	2865023024	2865093066	2865093103	3244133019
3247031040	8951927081	8951927082	8951927352	8951927363	8951927364
8951927365	8951927366	8951927367	8951927368	8951927369	8951927370
8951927371	8951927372	8951927373	8951927374	8951927375	8951927376
8951927377	8951927378	8951927379	8951927380	8951927381	8951927382
8951927383	8951927384	8951927385	8951927386	8951927413	8951927414
8951927415	8951927416	8951927417	8951927418	8951927419	8951927421
8951927422	8951927423	8951927424	8951927425	8951927426	8951927427
8951927428	8951927429	8951927430	8951927431	8951927432	8951927433
8951927434	8951927435	8951927436	8951927437	8951927438	8951927439
8951927440	8951927441	8951927442	8951927443	8951927444	8951927445
8951927446	8951927447	8951927448	8951927449	8951927450	8951927451
8951927452	8951927453	8951927454	8951927455	8951927456	8951927457
8951927458	8951927459	8951927460	8951927461		

**Santa Clarita Valley Sanitation District
Preliminary Operating Fund Budget (\$000)
Fiscal Year 2022-23**

	Adopted 2021-22	Proposed 2022-23
<u>Starting Balance</u>	\$ 26,474	\$ 22,360
 <u>Sources of Funds</u>		
Service Charge	\$ 36,791	\$ 36,455
Industrial Waste Charges (1)	2,515	2,103
Contract Revenue	673	472
Agricultural and Recycled Water Sales	214	170
Total Operating Revenue	40,193	39,200
 Ad Valorem Tax Revenue	 8,249	 8,435
Interest	795	112
Total Non-Operating Revenue	9,043	8,547
 Grants	 -	 3,000
Loan Proceeds	50,146	70,788
Total Capital Revenue	50,146	73,788
 Total Sources of Funds	\$ 99,382	\$ 121,535
 <u>Use of Funds</u>		
Joint Administration Operations	\$ 5,473	\$ 6,304
Sewer System Operations	744	711
Treatment Plant Operations	27,793	28,490
Other Operational Expenditures	533	599
Operations and Maintenance Expense	34,544	36,105
 Joint Administration Capital	 463	 373
Sewer System Capital	1,270	6,350
Treatment Plant Capital	43,441	47,570
Capital Expense	45,174	54,293
 Loan Repayment	 3,455	 3,445
Debt Service	3,455	3,445
 Transfers to Designated Reserves	 6,639	 5,626
Transfers Out	6,639	5,626
 Total Use of Funds	\$ 89,812	\$ 99,469
 <u>Ending Balance</u>	\$ 36,044	\$ 44,426

(1) Industrial Waste charges for Fiscal Year 2021-22 inadvertently double counted flow and loading from one discharger. The budget has been updated with the corrected value.

Sanitation Districts of Los Angeles County
Wastewater Budget Explanation and Glossary of Terms
Fiscal Year 2022-23

Introduction

The budget package for each District consists of the following sections:

- **Operating Fund Wastewater Budget:** Details of the sources and uses of funds for the Operating Fund, which is the only Unrestricted Reserve fund as described in the District’s wastewater reserve policy. The preliminary budget for the upcoming fiscal year is compared to the final adopted budget for the current fiscal year.
- **Proposed Capital Projects:** Shows major capital projects budgeted expenditures for the fiscal year. If a District has no major capital projects budgeted, this section is omitted.
- **Designated and Restricted Reserve Budget:** Provides beginning and ending balances of each category of reserves along with major inflows to and outflows from that reserve.
- **Rate and Other Information Summary:** Shows current and budgeted rates for the various user fees; summary of projected sewage units; and other metrics.

Terms used in the Budget

Below are explanations of budget line items and other terms used in the budgets. Note that some terms may not apply for certain Districts.

Operating Fund Beginning Balance	Projected cash balance in the Operating Fund as of July 1 at the beginning of the fiscal year shown.
Ad Valorem Taxes Revenue	The District’s share of Ad Valorem (property) taxes paid by property owners in the District.
Service Charge Revenue	Fees paid by residential, commercial and small industrial users of the District’s wastewater system. These fees are generally collected on the property tax bill as a separate line item.
Industrial Waste Revenue	Fees paid by large industrial users of the District’s wastewater system.
Contract Revenue	Sales of reclaimed water; commodity and energy revenue; leases; and other similar sources of revenue.
Interest Revenue	Interest generated by District’s Unrestricted and Designated Reserves.
Grant Revenue	Grant proceeds received, generally state and/or federal grants toward capital projects.

Loan Proceeds	Funds received from loans taken out to finance capital projects, primarily State Revolving Fund Clean Water Loans.
Transfers from Capital Improvement Funds	Funds transferred from Capital Improvement Funds to be used toward capital expenditures.
Joint Administration Operations Expenditures	The District's share of Joint Administration Operating Expenditures less any operational or non-operational Joint Administration Revenues
Joint Outfall Operations Expenditures	The District's share of Joint Outfall System Operating Expenditures less any operational or non-operational Joint Outfall System Revenues
District's Sewer System Operations Expenditures	Expenditures related to operating and maintaining the District's sewers and pumping plants.
Treatment Plant Operations Expenditures	Expenditures related to operating and maintaining treatment plants.
Composting Facility Operations and Maintenance Expenditures	Expenditures related to operating and maintaining composting facilities.
Contract Disposal Operations and Maintenance Expenditures	Expenditures related to the operation and maintenance for conveyance and treatment of wastewater performed by another entity.
Other Operational Expenditures	The District's operational expenditures that are not directly related to the District's facilities, such as insurance, annexations, and certain regulatory work.
Joint Administration Capital Expenditures	The District's share of Joint Capital Expenses minus Joint Capital Revenues.
District Sewer System Capital Expenditures	Capital expenditures related to rehabilitation or expansion of the District's sewers and pumping plants.
Treatment Plant Capital Expenditures	Capital expenditures related to upgrade, repair or expansion of treatment plants.
Composting Facility Capital Expenditures	Capital expenditures related to upgrade, repair or expansion of composting facilities.
Field Office Capital Expenditures	Capital expenditures related to upgrade, repair or expansion of field offices.
Contract Disposal Capital Expenditures	Capital expenditures related to conveyance and treatment of wastewater performed by another entity.

Loan Repayment	Interest and principal payments toward loans, primarily State Revolving Fund Clean Water Loans.
Bond Repayment	Interest and principal payments toward bond debt.
Transfers to Designated Reserves	Surplus funds at the end of the fiscal year not required for operating or cash-flow purposes that are transferred to designated reserves. Designated reserves are primarily used to help stabilize future rates and to set aside funds for future capital projects.
Operating Fund Ending Balance	Projected balance in the Operating Fund as of June 30 at the end of the fiscal year shown.
Total Served Sewage Units	Total number of Sewage Units (single family home equivalent dischargers) that are served by treatment plants owned by the Sanitation Districts.

Santa Clarita Valley Sanitation District Capital Project Wastewater Budget (\$000)

Project Name	Description	FY22-23 Budget	Estimated Completion	Total Budget (1)
Soledad Canyon Relief Trunk Sewer Section 4	Improvements to the wastewater collection system	5,900	6/30/23	7,000
SCV Non-Reinforced Concrete Sewer Rehabilitation (Misc Projects)	Rehabilitation of deteriorated sewer	400	6/30/30	6,900
Soledad Canyon Relief Trunk Sewer Rehabilitation	Rehabilitation of deteriorated sewer	50	6/30/25	1,100
Sewer System Total		<u>6,350</u>		
Valencia WRP Advanced Water Treatment Facility	Construction of an advanced water treatment facility as part of the Chloride Compliance Project	17,400	6/30/24	110,500
Valencia WRP North Aeration Process Improvements	Enhancements of the secondary treatment system to improve energy efficiency and modernization of the power distribution systems	16,245	6/30/23	36,300
Valencia WRP Power Distribution System Modifications	Modernizes the power distribution system to include redundant power feeds to improve the maintainability and reliability of the power systems at the plant	4,866	6/30/25	19,900
Saugus WRP Power Distribution System Modifications	Modernizes the power distribution system to include redundant power feeds to improve the maintainability and reliability of the power systems at the plant	4,310	7/30/24	15,000
Valencia WRP Tertiary Filtration Facilities	Replaces the existing pressure media filters that are near the end of their useful life with new more cost-effective filters	1,000	12/31/24	14,800
Valencia WRP UV Disinfection Facilities	Replacement of the existing chlorination facility with ultraviolet (UV) disinfection facility as part of the Chloride Compliance Project	1,000	6/30/23	27,500
Valencia WRP - Mechanically Stabilized Earth Retaining Wall Ground Improvements	Improvements to ancillary infrastructure	760	6/30/24	8,250
Saugus WRP Primary Structures Concrete Repairs	Improvements to ancillary infrastructure	500	6/30/25	3,000
Valencia WRP North Return Activated Sludge Drawoff Piping Replacement	Improvements to the secondary treatment system	300	6/30/23	400
Valencia WRP Stormwater Improvements at Valencia WRP	Stormwater improvements	300	6/30/23	400
Valencia WRP Filtrate Storage	Replaces the existing pressure media filters that are near the end of their useful life with new more cost-effective filters	200	6/30/25	1,400
Valencia WRP Switchboard 35 Feeder Repairs	Improvements to electrical infrastructure	175	6/30/23	200
Valencia WRP Miscellaneous Maintenance and E&I Capital Improvement Projects	Contingency funding for unplanned capital projects	100	6/30/31	2,050
Saugus WRP Security Camera - Entrance Improvements	Improvements to ancillary infrastructure	100	6/30/23	100
Valencia WRP Replacement of Primary Sedimentation Tank Aluminum Odor Control Covers	Installation of new covers due to severe corrosion of the existing covers	94	6/30/23	1,150
Valencia WRP Locker room modifications (WM)	Locker space for additional workers due to the AWTF startup	50	12/31/23	200
Saugus WRP Miscellaneous Maintenance and E&I Capital Improvement Projects	Contingency funding for unplanned capital projects	50	6/30/31	1,020
Saugus WRP New Sodium Bisulfite Facilities	Improvements to the secondary treatment system	50	6/30/24	250
Saugus WRP Air Line for Aeration Tank 2 (WM)	Improvements to the secondary treatment system	50	6/30/23	50
Valencia WRP Security Fencing	Improvements to ancillary infrastructure	20	12/31/24	1,550
Treatment Plants Total		<u>47,570</u>		
Total Capital Projects		<u><u>53,920</u></u>		

(1) Includes past, current, and future amounts

**Santa Clarita Valley Sanitation District
Reserve Funds Proposed Budget (\$000)
Fiscal Year 2022-23**

	Unrestricted	Designated			Restricted	Total
	Operating Fund	Emergency	O&M Financial Stability	Capital Projects Financial Stability	Capital Improvement	
Starting Reserve Balance	\$ 22,360	672	45,979	7,104	1,819	77,935
Operating Revenue	39,200	-	-	-	-	39,200
Non-Operating Revenue	8,547	3	230	36	9	8,825
Capital Revenue	73,788	-	-	-	2,035	75,823
Transfers In	-	-	701	4,950	-	5,651
Operations and Maintenance Expense	36,105	-	-	-	-	36,105
Capital Expense	54,293	-	-	-	-	54,293
Debt Service	3,445	-	-	-	-	3,445
Transfers Out	5,626	25	-	-	-	5,651
Ending Balance	44,426	651	46,910	12,090	3,863	107,940

**Santa Clarita Valley Sanitation District
Wastewater Budget Rate and Other Information Summary
Fiscal Year 2022-23**

	<u>Adopted 2021-22</u>	<u>Proposed 2022-23</u>
<u>Service Charge Rate</u>	370.00	370.00
<u>Industrial Waste (Surcharge) Rates</u>		
Flow (\$ per MGY)	1,417.00	1,417.00
COD (\$ per 1000 lbs)	323.00	323.00
SS (\$ per 1000 lbs)	793.60	793.60
Peak Flow (\$ per gpm)	200.40	200.40
<u>Projected Sewage Units</u>		
Residential/Commercial	99,435	98,528
Industrial Waste	512	1,117
Industrial Waste Contract	2,145	2,145
Contract In	59	61
Total Served Sewage Units	<u>102,151</u>	<u>101,851</u>