

To be held at the OFFICE OF THE DISTRICT
 1955 Workman Mill Road, Whittier, California

In response to concerns about the Novel Coronavirus (COVID-19), and in accordance with the provisions of California Government Code Section 54953(e), Directors will attend these meetings via teleconference. To join the meeting, click <https://us02web.zoom.us/j/8091438308> or enter the Meeting ID 809 143 8308 into the Zoom app on your smartphone or computer. Alternatively, you may join by phone by calling (669) 900-9128 and entering the Meeting ID. You may find further information at: <http://www.lacsd.org/agendas>

THE DISTRICT MAY TAKE ACTION ON ANY AGENDA ITEM LISTED BELOW

THURSDAY February 10, 2022 At 9:30 A.M.

Governing Body	Director	Alternate
LANCASTER	PARRIS (Chairperson)	CRIST (Chair pro tem)
PALMDALE	HOFBAUER	BISHOP
LOS ANGELES COUNTY	MITCHELL	BARGER

- Public Comment
- Receive and Order Filed Certificate of Ms. Holly Mitchell, Presiding Officer of the Board of Supervisors of the County of Los Angeles
- Approve Minutes of Special Meeting Held January 13, 2022
- Approve December 2021 Expenses in Amount of \$1,391,992.15

Summary: Local District expenses represent costs incurred for operations, maintenance, and capital projects that are the sole responsibility of the individual District. Allocated expenses represent the District's proportionate share of expenses made by District No. 2, the Administrative District, on its behalf pursuant to the Joint Administration Agreement. This Agreement provides for the joint administration and technical support for all of the signatory Districts along with the methodology for determining the proportionate costs for each District. A listing of Districts' payments and previously approved budgets can be found on the Districts' website at lacsd.org/financial-documents. This item is consistent with the Districts' Guiding Principle of commitment to fiscal responsibility and prudent financial stewardship.

Local District Expenses:	
Operations & Maintenance (O & M)	\$1,068,711.43
Capital	65,898.04
Legal	877.50
Allocated Expenses:	
Joint Administration	119,284.50
Technical Support	135,630.37
Legal	1,590.31
Total Expenses	<u>\$1,391,992.15</u>

- Approve *Resolution of the Board of Directors of County Sanitation District No. 14 of Los Angeles County Proclaiming a Local Emergency, Ratifying the Proclamation of a State of Emergency on March 4, 2020 by California Governor and Authorizing Remote Teleconference Meetings of the Legislative Body*

Summary: Remote teleconferenced meetings, during the continued existence of the Governor's proclaimed state of COVID-19 emergency, will be conducted under the provisions of AB 361 which added California Government Code Section 54953(e), to the Brown Act. Under the provisions of AB 361 and Government Code Section 54953(e), each District must adopt, by majority vote, a resolution making certain findings about the continuing COVID state of emergency and health and safety risks of conducting their meeting in person. By statute, this Resolution and its referenced findings, are only legally valid for 30 days. The Resolution is attached to the agenda.

- Authorize Extension of Purchase Order to Irrigation Training and Research Center (ITRC) in Amount of Approximately \$136,500 to Provide Agricultural Consulting Services and Vadose Zone Monitoring System Maintenance at Lancaster Water Reclamation Plant (WRP) Eastern Agricultural Site (EAS) for Approximately 18 months

Summary: In March 2018, the Board issued a purchase order to ITRC, low responsive bidder pursuant to a competitive selection process, for a 4.5-year period to perform permit required work at the Lancaster

6. Contd.

WRP EAS. ITRC supports groundwater monitoring and provides an agricultural expert to assure that recycled water is applied to crops at the EAS at or below agronomic rates. There are permit related activities that have been initiated but will not be completed within the original period. ITRC has offered to continue providing support to complete the work at no change to the hourly rate in the existing purchase order. An 18-month extension at this time would be in the best interests of the Districts. Staff has determined that the activities described herein are exempt or otherwise not subject to the provisions of the California Environmental Quality Act (CEQA) pursuant to California Public Resources Code Sections 21084 and Title 14 of the California Code of Regulations (“CEQA Guidelines”) Sections 15301 and 15308. This item is consistent with the Districts’ Guiding Principles of commitment to fiscal responsibility and prudent financial stewardship; and commitment to operational excellence (protection of public health and the environment, regulatory compliance, and cost effectiveness).

7. Re: Annexation No. 434 to District

- (a) Adopt Resolution for Making Application to Local Agency Formation Commission (LAFCO) for Annexation and Consent to Waiver of Protest Proceedings
- (b) Adopt Joint Resolution with County of Los Angeles, Antelope Valley Cemetery District, Antelope Valley Resource Conservation District, and Antelope Valley - East Kern Water Agency, Approving and Accepting Negotiated Exchange of Property Tax Revenues Resulting from Annexation

Summary: Annexation No. 434 consists of one proposed auto service shop. Each annexation to the District’s service area requires adoption of two resolutions by the Board. The first resolution authorizes submittal of the annexation application to LAFCO and consents to a waiver of the LAFCO protest hearing. The second resolution is a joint resolution with agencies that already provide services to the proposed annexation territory, agreeing to the amount of property tax revenue that will be apportioned to the District in accordance with the Revenue and Taxation Code. A data sheet, map, and Notice of Finding are attached.

8. Re: Wastewater Revenue Program

- (a) Introduce *An Ordinance Prescribing the Service Charge Rate and Mean Loadings per Unit of Usage for County Sanitation District No. 14 of Los Angeles County and Providing for the Collection of Such Charges on the Tax Roll*, and Waive Reading of Said Ordinance in its Entirety
- (b) Introduce *An Ordinance Prescribing Industrial Wastewater Surcharge Rates for County Sanitation District No. 14 of Los Angeles County*, and Waive Reading of Said Ordinance in its Entirety
- (c) Order Wastewater Service Charge Report, Containing Description of Each Parcel and Amount of Proposed Wastewater Service Charge for Fiscal Year 2022-23 for Each Parcel, Filed with Clerk of Board of Directors of District
- (d) Establish Date, Time, and Place for Public Hearing on Report; Order Publication of Required Public Notices, and Authorize Secretary to Board to Revise Date, Time, and Place for Public Hearing if Required Due to Scheduling Conflicts

Summary: The service charge rate is currently \$40.66 per month per single-family home (\$487.88 per year). The service charge rate for fiscal year 2022-23, as previously adopted by the Board, is \$43.63 per month (\$523.52 per year). Based on review of the upcoming operating expenses, capital projects and reserve targets, staff recommends that the service charge rate remain at \$487.88 per year and that industrial wastewater surcharge rates remain unchanged. In addition, filing of the Service Charge Report is required each year in order to collect the wastewater service charge on the property tax roll. A letter describing the proposed rates and required Board actions together with a copy of the Service Charge Report, the preliminary budget, the proposed service charge rate and industrial wastewater surcharge rate ordinances accompany the agenda. This item is consistent with the Districts’ Guiding Principles of commitment to fiscal responsibility and prudent financial stewardship; and to plan for both short-term and long-term needs to minimize the need for significant rate increases.

Adjourn

Status Report: Prior to or during the meeting session, the Chief Engineer and General Manager may update the Directors on various matters concerning the Districts that may be of current interest to the Directors.

Public Comment: Members of the public may address the Board of Directors on any item shown on the agenda or matter under the Board’s authority. A “Request to Address Board of Directors” form is available. In compliance with the Americans with Disabilities Act, if you require special assistance to participate in this meeting, please contact the Secretary to the Boards’ Office (562) 908-4288, extension 1100. Notification of 48 hours prior to the meeting will enable staff to make reasonable arrangements to ensure accessibility to this meeting. (28CFR 35.101 et seq. ADA Title II).

Document Requests: Links to supporting documents are available online at the time of posting. Agendas and supporting documents or other writings that will be distributed to Board members in connection with matters subject to discussion or consideration at this meeting that are not exempt from disclosure under the Public Records Act are available for inspection following the posting of this agenda at the office of the Secretary to the Boards of Directors located at the Districts’ Joint Administration Building, 1955 Workman Mill Road, Whittier, California, 90601, or at the time of the meeting at the address posted on this agenda.

RESOLUTION OF THE BOARD OF DIRECTORS OF THE COUNTY SANITATION
DISTRICT NO. 14 OF LOS ANGELES COUNTY PROCLAIMING A LOCAL EMERGENCY,
RATIFYING THE PROCLAMATION OF A STATE OF EMERGENCY
ON MARCH 4, 2020 BY CALIFORNIA GOVERNOR AND AUTHORIZING
REMOTE TELECONFERENCE MEETINGS OF THE LEGISLATIVE BODY

WHEREAS, the County Sanitation District No. 14 of Los Angeles County (“District”) is committed to preserving and nurturing public access and participation in meetings of the District’s Board of Directors and committees; and

WHEREAS, all meetings of the District’s Board of Directors are open and public, pursuant to the requirements of the Ralph M. Brown Act (California Government Code Sections 54950-54963) (the “Brown Act”), so that any member of the public may attend, participate, observe and watch the District’s Board of Directors conduct business; and

WHEREAS, the Brown Act, Section 54953(e), allows for conducting and participating in meetings by members of a legislative body, without compliance with the requirements of the Brown Act Section 54953(b)(3), subject to the existence of certain conditions; and

WHEREAS, a required condition under the Brown Act Section 54953(e) is the declaration of a state of emergency by the Governor pursuant to California Government Code Section 8625, proclaiming the existence of conditions of disaster or of extreme peril to the safety of persons and property within California caused by the conditions outlined and described in California Government Code Section 8558; and

WHEREAS, a proclamation of a state of emergency is made when there is an actual incident, threat of disaster, or extreme peril to the safety of persons and property within the jurisdictions that are within the District’s boundaries, caused by natural, technological, or human-induced disasters; and

WHEREAS, it is further required that the state or local officials have imposed or recommended measures to promote social distancing, or the Board of Directors of the District have held a meeting where it considered and determined that meeting in person would present imminent risks to the health or safety of attendees; and

WHEREAS, such conditions now exist in the District as Governor Newsom declared a State of Emergency on March 4, 2020 as a result of the threat of COVID-19; and

WHEREAS, the Centers for Disease Prevention and Control, in its publication “How to Protect Yourself & Others” updated August 13, 2021, have recommended social distancing practices, including staying 6 feet away from others and avoiding crowds and poorly ventilated spaces in order to protect individuals and others from COVID-19; and

WHEREAS, the County of Los Angeles Department of Public Health Order of the Health Officer issued September 17, 2021 (the “County Order”) includes a finding that the existing community transmission of COVID-19 in Los Angeles County remains high and continues to present a high risk of infection and harm to the health of those who are not and cannot be vaccinated against COVID-19 especially when there is an absence of capacity limits and physical distancing requirements for both indoor and outdoor settings. The County Order further finds that COVID-19 infection remains a significant health hazard to all residents; and

WHEREAS, the District’s Board of Directors does hereby find that the ongoing and significant risks associated with COVID-19 infection, especially in the absence of capacity limits and physical distancing requirements for indoor activities, on those who are not and cannot be vaccinated, and that COVID-19 infection remains a significant health hazard to all residents, has caused, and will continue to cause, conditions of peril to the safety of persons within the District that are likely to be beyond the control of services, personnel, equipment and facilities of the District, and desires to proclaim a local emergency and ratify the proclamation of a state of emergency by the Governor of the State of California, and further, ratify the County Order findings related to the ongoing health hazards of COVID-19; and

WHEREAS, as a consequence of the declared state of emergency and the local emergency, the Board of Directors of the District does hereby find that the District shall continue to conduct its meetings in accordance with the provisions and requirements of the Brown Act Section 54953(e), and that the legislative

bodies of the District shall comply with the requirements to provide the public with access to, and an opportunity to comment at all meetings of the District's legislative bodies in accordance with the requirements of the Brown Act Section 54953(e)(2); and

WHEREAS, the District will continue its practice of live streaming its meetings via the Zoom software platform which allows members of the public to observe and participate in the meetings via video or call-in options, and will continue to offer members of the public an opportunity to make oral comments during the meetings and/or submit written comments before the meetings.

NOW, THEREFORE, THE BOARD OF DIRECTORS OF THE COUNTY SANITATION DISTRICT NO. 14 OF LOS ANGELES COUNTY DOES HEREBY RESOLVE AS FOLLOWS:

Section 1. Recitals. The Recitals set forth above are true, correct, and are incorporated in this Resolution by reference.

Section 2. Proclamation of Local Emergency. The Board of Directors of the District does hereby proclaim that a local emergency now exists throughout the territory of the District and, as described in the County Order, there remains evidence of sustained and high community transmission rates of COVID-19 resulting in high risks of infection and harm to the health of those who are not and cannot be vaccinated against COVID-19, especially when there is an absence of capacity limits and physical distancing requirements for both indoor and outdoor settings, and COVID-19 infection remains a significant health hazard to all residents of the District.

Section 3. Ratification of Governor's Proclamation of a State of Emergency. The District's Board of Directors hereby ratifies the Governor of the State of California's Proclamation of a State of Emergency, effective as of its issuance date of March 4, 2020.

Section 4. Remote Teleconference Meetings. The Chief Engineer and General Manager, staff and legislative bodies are hereby authorized and directed to take all actions necessary to carry out the intent and purpose of this Resolution including, without limitation, conducting open and public meetings in accordance with the Brown Act Section 54953(e) and all other applicable provisions of the Brown Act.

Section 5. Effective Date of Resolution. This Resolution shall take effect immediately upon its adoption and shall be effective until the earlier of (i) 30 days after the date of this resolution, or such time that the District's Board of Directors adopts a subsequent resolution in accordance with the Brown Act Section 54953(e)(3) to extend the time during which the legislative bodies of the District may continue to teleconference without compliance with the requirements of the Brown Act Section 54953(b)(3).

PASSED AND ADOPTED by the Board of Directors of the County Sanitation District No. 14 of Los Angeles County this 10th day of February 2022 by the following vote:

AYES:

NOES:

ABSENT:

ABSTAIN:

Chairperson

COUNTY SANITATION DISTRICT NO. 14 OF LOS ANGELES COUNTY

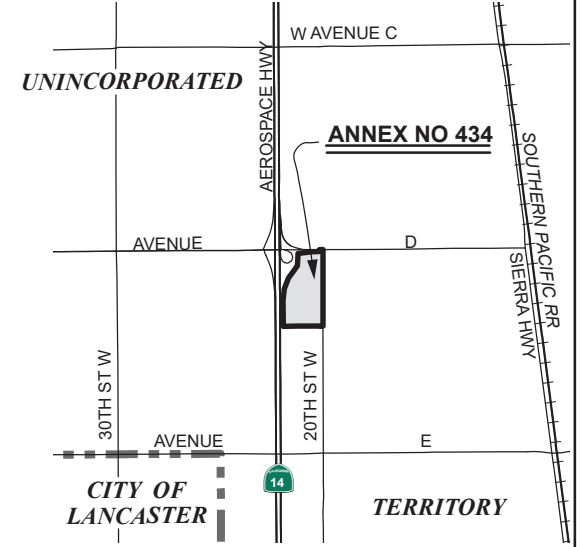
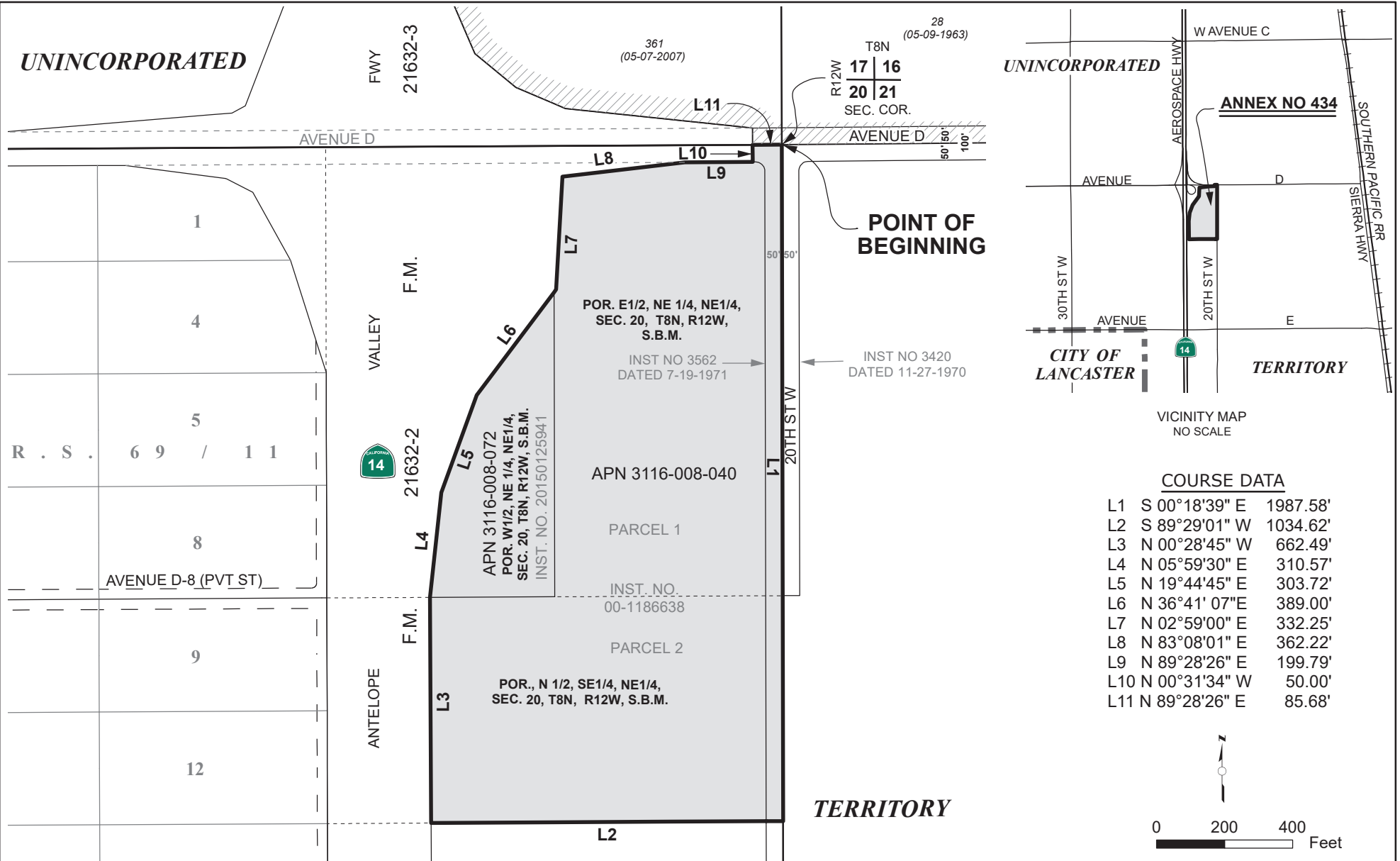
PROPOSED ANNEXATION NO. 434

AGENDA DATE: Resolution Making Application to LAFCO..... February 10, 2022

LOCATION: Thomas Brothers Map Page 3925 Grid D2
Located on the southwest corner of 20th Street West and Avenue D, all within
Unincorporated Los Angeles County.

PROCESSING FEES:	District	\$ 9,375.00
	Local Agency Formation Commission	5,000.00
	State Board of Equalization	<u>1,200.00</u>
	Total:	\$ <u>15,575.00</u>

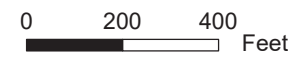
DESCRIPTION & REMARKS: The annexation consists of one proposed auto service shop.



VICINITY MAP
NO SCALE

COURSE DATA

L1	S 00°18'39" E	1987.58'
L2	S 89°29'01" W	1034.62'
L3	N 00°28'45" W	662.49'
L4	N 05°59'30" E	310.57'
L5	N 19°44'45" E	303.72'
L6	N 36°41' 07" E	389.00'
L7	N 02°59'00" E	332.25'
L8	N 83°08'01" E	362.22'
L9	N 89°28'26" E	199.79'
L10	N 00°31'34" W	50.00'
L11	N 89°28'26" E	85.68'



- Annexation No. 434 shown thus
- Boundary of Sanitation District No. 14 prior to Annexation No. 434 shown thus
- City Boundary
- Prior Annexations shown thus
- Area of Annexation 40.256 ± Acres

LA County Assessor Landbase,
CAMS Centerline, DPW City boundary
LA County Sanitation Districts:
AnnexationLayer and District Layer

COUNTY SANITATION DISTRICT NO. 14
 OF LOS ANGELES COUNTY, CA
 OFFICE OF CHIEF ENGINEER
 ROBERT C. FERRANTE
 CHIEF ENGINEER & GENERAL MANAGER
ANNEXATION NO. 434
 TO
COUNTY SANITATION DISTRICT NO. 14
 Recorded:

NOTICE OF FINDING/CERTIFICATE OF FILING

ANNEXATION NO. 434 TO COUNTY SANITATION DISTRICT NO. 14

THOMAS BROTHERS MAP PAGE 3925 GRID D2

The annexation consists of one proposed auto service shop.

1. **BASED UPON REVIEW AND STUDY, I FIND AND CERTIFY THAT:**

- The annexation **is exempt** from the provisions of the California Environmental Quality Act, pursuant to the State CEQA Guidelines,

Section: 15061

Reason: Notice of Exemption Filed 4/30/2021 Common sense exemption - no possibility of significant environmental impacts

- The **Negative Declaration** is adequate for consideration of the annexation.

- The **Environmental Impact Report** is acceptable for consideration of the annexation.

2. The subject annexation has been set for consideration before the Board of Directors of County Sanitation District No. 14 at their meeting to be held on February 10, 2022 at the time and place as provided for the meeting of said date.
3. The subject annexation and all related documents are on file in the office of the Chief Engineer and General Manager, Los Angeles County Sanitation Districts, 1955 Workman Mill Road, (P.O. Box 4998) Whittier, California and may be examined by any interested person for further particulars. Telephone: (562) 908-4288, extension 2708.



Stan Pegadiotes
Division Engineer
Facilities Planning Department

JOINT RESOLUTION OF THE BOARD OF SUPERVISORS OF THE COUNTY OF LOS ANGELES
ACTING IN BEHALF OF

Los Angeles County General Fund

Los Angeles County Library

Los Angeles County Road District #5

Los Angeles County Consolidated Fire Protection District

THE BOARD OF DIRECTORS OF COUNTY SANITATION DISTRICT NO. 14 OF LOS ANGELES
COUNTY, AND THE GOVERNING BODIES OF

Antelope Valley Cemetery District

Antelope Valley Resource Conservation District

Antelope Valley - East Kern Water Agency

APPROVING AND ACCEPTING NEGOTIATED EXCHANGE OF PROPERTY TAX REVENUES
RESULTING FROM ANNEXATION TO COUNTY SANITATION DISTRICT NO. 14.

"ANNEXATION NO. 434"

WHEREAS, pursuant to Section 99 and 99.01 of the Revenue and Taxation Code, prior to the effective date of any jurisdictional change which will result in a special district providing a new service, the governing bodies of all local agencies that receive an apportionment of the property tax from the area must determine the amount of property tax revenues from the annual tax increment to be exchanged between the affected agencies and approve and accept the negotiated exchange of property tax revenues by resolution; and

WHEREAS, the governing bodies of the agencies signatory hereto have made determinations of the amount of property tax revenues from the annual tax increments to be exchanged as a result of the annexation to County Sanitation District No. 14 entitled *Annexation No. 434*;

NOW, THEREFORE, BE IT RESOLVED AS FOLLOWS:

1. The negotiated exchange of property tax revenues resulting from the annexation of territory to County Sanitation District No. 14 in the annexation entitled *Annexation No. 434* is approved and accepted.

2. For each fiscal year commencing on and after July 1, 2021 or after the effective date of this jurisdictional change, whichever is later, the County Auditor shall transfer to County Sanitation District No. 14 a total of 0.3194473 percent of the annual tax increment attributable to the land area encompassed within *Annexation No. 434* as shown on the attached Worksheet.

3. No additional transfer of property tax revenues shall be made from any other tax agencies to County Sanitation District No. 14 as a result of annexation entitled *Annexation No. 434*.

4. No transfer of property tax increments from properties within a community redevelopment project, which are legally committed to a Community Redevelopment Agency, shall be made during the period that such tax increment is legally committed for repayment of the redevelopment project costs.

5. If at any time after the effective date of this resolution, the calculations used herein to determine initial property tax transfers or the data used to perform those calculations are found to be incorrect thus producing an improper or inaccurate property tax transfer, the property tax transfer shall be recalculated and the corrected transfer shall be implemented for the next fiscal year.

The foregoing resolution was adopted by the Board of Supervisors of the County of Los Angeles, the Board of Directors of County Sanitation District No. 14 of Los Angeles County, and the governing bodies of Antelope Valley Cemetery District, Antelope Valley Resource Conservation District, and Antelope Valley - East Kern Water Agency, signatory hereto.

COUNTY SANITATION DISTRICT NO. 14
OF LOS ANGELES COUNTY

Chairperson, Board of Directors

ATTEST:

Secretary

Date

(SIGNED IN COUNTERPART)



February 4, 2022

Board of Directors
County Sanitation District No. 14
of Los Angeles County

Directors:

Wastewater Revenue Program for Fiscal Year 2022-23

The agenda for the February 10, 2022 meeting of the Board of Directors of District No. 14 contains an item regarding the District's service charges, including introduction of new rate ordinances and actions to continue collecting service charges on the tax roll.

SERVICE CHARGE AND SURCHARGE RATES

Service charge rates (for residential and commercial users) and surcharge rates (for industrial users) are intended to ensure that revenues adequately fund operational costs, upcoming capital projects, and help the District meet the targets in its board-adopted reserve and debt policies.

The service charge rate is currently \$40.66 per month per single-family home (\$487.88 per year). The last rate increase was July 1, 2019 when a four-year rate ordinance was adopted, and rates increased \$11.88 from the previous rates. Additional rate increases of \$11.88 per year for 2020 and 2021 that were in the 2019 ordinance were subsequently suspended due to the COVID-19 pandemic. The current, modified ordinance adopted by the board in March 2021 incorporates a rate effective July 1, 2022 that is the same as what was planned in the original 2019 rate package, \$43.63 per month (\$523.52 per year).

Based on review of the upcoming capital projects and required debt coverage and reserve targets, staff recommends that the current service charge rate increase for July 1, 2022 be eliminated. Maintaining the current rate is adequate to cover the short-term financial needs of the District. However, it may increase the need for future financing of capital projects as well as the cost of financing. If the Board concurs with the recommendation, new service charge and industrial wastewater surcharge rate ordinances will need to be adopted.

Multi-family residential units will pay 60% of the adopted single-family home rate and condominiums will pay 75% of the adopted single-family home rate. Likewise, commercial and industrial dischargers will pay in proportion to their use of the wastewater management system compared to a single-family home. Dischargers with verified low water usage (particularly seniors and retirees) may also qualify for a reduced charge.

BUDGET FOR FISCAL YEAR 2022-23

Enclosed for your review is the preliminary budget for fiscal year 2022-23; a list and description of proposed capital projects; a list of user fees; information on the monies set aside in various funds/reserves; and an explanation of terms used in the budget. The funds and reserves were established and funded in accordance with the District's Wastewater Financial Reserve Policy.

A final budget will be presented to the Board for consideration in June as part of the overall budgetary process, adoption of which will authorize budget appropriations.

COLLECTION OF SERVICE CHARGES ON THE TAX ROLL

The agenda also contains actions to allow for continued collection of the District's service charges for residential, commercial, and small industrial dischargers on the property tax roll. Specifically, pursuant to state law, the Board must: (1) order a Service Charge Report be filed with the District Clerk, (2) establish the date, time, and place for a public hearing on the report; and (3) direct the publication of the required notices.

LOW WATER REBATE PROGRAMS

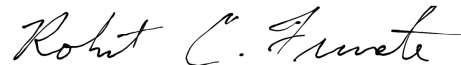
Because the cost of metering wastewater discharges from individual parcels is impractical and cost prohibitive, discharges are estimated using standard loading factors based on the size and types of facilities located on the parcel. With the ongoing efforts by local communities to conserve water and install low-flow plumbing fixtures, many parcels may be discharging at lower rates than is currently estimated. The Districts' low water rebate program allows parcel owners to apply for a reduction in their service charge rate based on their actual water usage. Staff has conducted a concerted public outreach program, including information on the program in our Proposition 218 notices, newspaper advertisements, and the Districts' website, to ensure that parcel owners are aware of the program.

SUMMARY OF REQUIRED ACTIONS

As previously discussed, the Board must order the filing of a Service Charge Report (enclosed) with the District Clerk. The Board must also schedule a public hearing and instruct the District Clerk to publish newspaper notices to inform the public of the hearing. After the close of its public hearing, the Board will consider adoption of the Service Charge Report, as is required under the California Health and Safety Code in order for the District to continue to collect the previously approved wastewater service charge as a separate line item on the property tax roll. This is the most cost-effective and efficient means of collecting the service charges. It is recommended that the date and time of the public hearing be set at the meeting by the Board of Directors.

At the June meeting, a final budget will be presented to the Board for consideration as part of the overall budgetary process, adoption of which will authorize budget appropriations. In addition, the Board must take certain administrative actions that are required of all agencies that receive ad valorem taxes. These include establishing by resolution the amount of the tax levy the District will request from the Los Angeles County Tax Collector and adopting a limit on authorized expenditures of tax proceeds.

Very truly yours,



Robert C. Ferrante

RCF:gc
Enclosures

**AN ORDINANCE PRESCRIBING THE SERVICE CHARGE RATE
AND MEAN LOADINGS PER UNIT OF USAGE FOR
COUNTY SANITATION DISTRICT NO. 14 OF LOS ANGELES COUNTY,
AND PROVIDING FOR THE COLLECTION OF SUCH
CHARGES ON THE TAX ROLL**

THE BOARD OF DIRECTORS OF COUNTY SANITATION DISTRICT NO. 14 OF LOS ANGELES COUNTY ORDAINS AS FOLLOWS:

SECTION 1.0 - USER CATEGORIES AND MEAN LOADINGS

Pursuant to Section 3.04(1) of the *Master Service Charge Ordinance of County Sanitation District No. 14 of Los Angeles County*, the following shall constitute the user categories and mean loadings per unit of usage for flow, chemical oxygen demand (COD), and suspended solids:

<u>DESCRIPTION</u>	<u>UNIT OF MEASURE</u>	<u>FLOW (Gallons per Day)</u>	<u>COD (Pounds per Day)</u>	<u>SUSPENDED SOLIDS (Pounds per Day)</u>
RESIDENTIAL				
Single Family Home	Dwelling Unit	260	1.22	0.59
Condominiums	Dwelling Unit	195	0.92	0.44
Multi-Unit Residential	Dwelling Unit	156	0.73	0.35
Mobile Home Parks	No. of Spaces	156	0.73	0.35
COMMERCIAL				
Hotel/Motel/Rooming House	Room	125	0.54	0.28
Store	1000 ft ²	100	0.43	0.23
Supermarket	1000 ft ²	150	2.00	1.00
Shopping Center	1000 ft ²	325	3.00	1.17
Regional Mall	1000 ft ²	150	2.10	0.77
Office Building	1000 ft ²	200	0.86	0.45
Medical, Dental, Veterinary Clinic or Building	1000 ft ²	300	1.29	0.68
Restaurant	1000 ft ²	620	10.34	3.10
Indoor Theatre	1000 ft ²	125	0.54	0.28
Car Wash				
Tunnel - No Recycling	1000 ft ²	3,700	15.86	8.33
Tunnel - Recycling	1000 ft ²	2,700	11.74	6.16
Wand	1000 ft ²	700	3.00	1.58
Bank, Credit Union	1000 ft ²	100	0.43	0.23
Service Shop, Vehicle Maintenance & Repair Shop	1000 ft ²	100	0.43	0.23
Animal Kennels	1000 ft ²	100	0.43	0.23
Gas Station	1000 ft ²	100	0.43	0.23
Auto Sales	1000 ft ²	100	0.43	0.23
Wholesale Outlet	1000 ft ²	100	0.43	0.23
Nursery/Greenhouse	1000 ft ²	25	0.11	0.06

<u>DESCRIPTION</u>	<u>UNIT OF MEASURE</u>	<u>FLOW (Gallons per Day)</u>	<u>COD (Pounds per Day)</u>	<u>SUSPENDED SOLIDS (Pounds per Day)</u>
COMMERCIAL				
Manufacturing	1000 ft ²	200	1.86	0.70
Light Manufacturing ≤ 300,000 ft ²	1000 ft ²	25	0.23	0.09
Light Manufacturing > 300,000 ft ²	1000 ft ²	10	0.09	0.04
Lumber Yard ≤ 300,000 ft ²	1000 ft ²	25	0.23	0.09
Lumber Yard > 300,000 ft ²	1000 ft ²	10	0.09	0.04
Warehousing ≤ 300,000 ft ²	1000 ft ²	25	0.23	0.09
Warehousing > 300,000 ft ²	1000 ft ²	10	0.09	0.04
Open Storage ≤ 300,000 ft ²	1000 ft ²	25	0.23	0.09
Open Storage > 300,000 ft ²	1000 ft ²	10	0.09	0.04
Drive-in Theatre	1000 ft ²	20	0.09	0.05
Night Club	1000 ft ²	350	1.50	0.79
Bowling/Skating	1000 ft ²	150	1.76	0.55
Club & Lodge Halls	1000 ft ²	125	0.54	0.27
Auditorium, Amusement	1000 ft ²	350	1.50	0.79
Golf Course and Park (Structures and Improvements)	1000 ft ²	100	0.43	0.23
Campground, Marina, Recreational Vehicle Park	Sites, Slips, or Spaces	55	0.34	0.14
Convalescent Home	Bed	125	0.54	0.28
Horse Stables	Stalls	25	0.23	0.09
Laundromat	1000 ft ²	3,825	16.40	8.61
Mortuary, Funeral Home	1000 ft ²	100	1.33	0.67
Health Spa, Gymnasium With Showers	1000 ft ²	600	2.58	1.35
Without Showers	1000 ft ²	300	1.29	0.68
Convention Center, Fairground, Racetrack, Sports Stadium/Arena	Average Daily Attendance	10	0.04	0.02
INSTITUTIONAL				
College/University	Student	20	0.09	0.05
Private School	1000 ft ²	200	0.86	0.45
Library, Museum	1000 ft ²	100	0.43	0.23
Post Office (Local)	1000 ft ²	100	0.43	0.23
Post Office (Regional)	1000 ft ²	25	0.23	0.09
Church	1000 ft ²	50	0.21	0.11

SECTION 2.0 - COST ALLOCATION FACTORS

Pursuant to Section 3.04(3) of the *Master Service Charge Ordinance of County Sanitation District No. 14 of Los Angeles County*, the proportions of the total operation and maintenance and net capital costs required for conveyance, treatment, and disposal of wastewater for the fiscal year which are attributable to flow, COD, and suspended solids, designated as A, B, and C, respectively, shall be:

<u> A </u>	<u> B </u>	<u> C </u>
0.3863	0.3210	0.2927

SECTION 3.0 - SERVICE CHARGE RATE

Pursuant to Section 3.03(1) of the *Master Service Charge Ordinance of County Sanitation District No. 14 of Los Angeles County*, the following, to be effective on the dates given, shall constitute the annual Service Charge Rate per sewage unit:

July 1, 2022
\$487.88

SECTION 4.0 - COLLECTION ON THE TAX ROLL

Pursuant to Section 5473 of the California Health and Safety Code, the District elects to have the service charge imposed pursuant to Sections 3.01 through 3.08 of the *Master Service Charge Ordinance of County Sanitation District No. 14 of Los Angeles County* collected on the tax roll in the same manner, by the same persons, and at the same time as, together with and not separately from, the ad valorem taxes collected by the County of Los Angeles.

SECTION 5.0 - VALIDITY

If any part, section, subsection, paragraph, sentence, clause, or phrase of this Ordinance is held invalid or unconstitutional for any reason by any court, that decision does not affect the validity or constitutionality of the remainder of this Ordinance. The Board of Directors declares that it would have adopted each provision of this Ordinance irrespective of the validity of any other provision.

SECTION 6.0 - EFFECTIVE DATE

This Ordinance shall become effective July 1, 2022.

ATTEST:

Clerk, Board of Directors
County Sanitation District No. 14
of Los Angeles County

Chairperson, Board of Directors
County Sanitation District No. 14
of Los Angeles County

PASSED AND ADOPTED by the Board of Directors of County Sanitation District No. 14 of Los Angeles County on _____ by the following vote:

AYES:

NOES:

ABSENT:

ABSTAIN:

Secretary of the Board of Directors
County Sanitation District No. 14
of Los Angeles County

**AN ORDINANCE PRESCRIBING INDUSTRIAL WASTEWATER
SURCHARGE RATES FOR COUNTY SANITATION
DISTRICT NO. 14 OF LOS ANGELES COUNTY**

THE BOARD OF DIRECTORS OF COUNTY SANITATION DISTRICT NO. 14 OF LOS ANGELES COUNTY ORDAINS AS FOLLOWS:

SECTION 1.0 – INDUSTRIAL WASTEWATER SURCHARGE RATES

(a) Pursuant to Section 410 of the *Wastewater Ordinance*, adopted by County Sanitation District No. 14 of Los Angeles County, the following, to be effective on the dates given, shall constitute the annual Industrial Wastewater Surcharge Rates:

<u>PARAMETER</u>	<u>July 1, 2022</u>
Flow (a) [per MG]	\$3,232.00
COD (b) [per 10 ³ lbs]	\$363.80
SS (c) [per 10 ³ lbs]	\$878.20
Peak (d) [per gpm]	\$621.60
Short Form Rate[per MG]	\$7,190.00

(b) To further the use of Districts’ reclaimed water, a credit, as determined by the Chief Engineer, will be applied to an industry's wastewater surcharge obligation for the chemical oxygen demand present in reclaimed water utilized by an industrial discharger and which originated at a Districts’ water reclamation plant.

SECTION 2.0 - LIQUID WASTE DISPOSAL RATES

Pursuant to Section 418 of the *Wastewater Ordinance*, adopted by County Sanitation District No. 14 of Los Angeles County, the unit rate charge for the disposal of vehicle-transported nonhazardous liquid wastes, to be effective on the dates given shall be:

July 1, 2022
13.7¢
per gallon

SECTION 3.0 - EFFECTIVE DATE

This Ordinance shall become effective July 1, 2022.

ATTEST:

Clerk, Board of Directors
County Sanitation District No. 14
of Los Angeles County

Chairperson, Board of Directors
County Sanitation District No. 14
of Los Angeles County

PASSED AND ADOPTED by the Board of Directors of County Sanitation District No. 14 of Los Angeles County on _____ by the following vote:

AYES:

NOES:

ABSENT:

ABSTAIN:

Secretary of the Board of Directors
County Sanitation District No. 14
of Los Angeles County

COUNTY SANITATION DISTRICT NO. 14 SERVICE CHARGE REPORT FOR FISCAL YEAR 2022-23

INTRODUCTION

County Sanitation District No. 14 of Los Angeles County encompasses portions of the cities of Lancaster and Palmdale and unincorporated Los Angeles County.

District No. 14 provides wastewater management services for the area described above. The District is responsible for the operation and maintenance of the Lancaster Water Reclamation Plant and the large trunk sewers which convey wastewater to this facility. These services are essential to protect the public health of the people served by the system.

District No. 14 must provide the revenue required to operate and maintain its facilities. The general revenue sources currently available to the District include a pro rata share of the ad valorem (property) taxes, service charges, industrial wastewater surcharges, interest income, contract revenue and reserves. Any surplus will be transferred to designated reserves to meet targeted reserve requirements.

PROPOSED SYSTEM DESCRIPTION

The required supplemental revenue under the *Master Service Charge Ordinance of County Sanitation District No. 14 of Los Angeles County* will be allocated among classes of developed parcels of real property on the basis of use of the sewerage system. The revenue derived from the service charge will be used for operation and maintenance and capital costs.

All industrial dischargers in District No. 14 discharging more than 1.0 million gallons per year are required to file a wastewater surcharge statement as prescribed in the Wastewater Ordinance to pay their appropriate share of the costs based on their use of the sewerage system. All other users of the sewerage system, except for contractual and local government users, will pay service charges.

The basic term used to define the service charge is a sewage unit. A sewage unit represents the average daily quantity of sewage flow and strength from a single-family home measured in terms of flow, chemical oxygen demand, and suspended solids. The number of sewage units (SU) per unit of measure shall be determined by the following formula:

$$\text{SU} = A \left(\frac{\text{FLOW}_{\text{avg}}}{\text{FLOW}_{\text{sft}}} \right) + B \left(\frac{\text{COD}_{\text{avg}}}{\text{COD}_{\text{sft}}} \right) + C \left(\frac{\text{SS}_{\text{avg}}}{\text{SS}_{\text{sft}}} \right)$$

where:

A = The proportion of the total operation and maintenance and capital costs required for conveyance, treatment, and disposal of wastewater for the fiscal year which is attributable to flow;

B = The proportion of the total operation and maintenance and capital costs required for conveyance, treatment, and disposal of wastewater for the fiscal year which is attributable to COD;

C = The proportion of the total operation and maintenance and capital costs required for conveyance, treatment, and disposal of wastewater for the fiscal year which is attributable to suspended solids;

FLOW_{sft} = Average flow of wastewater from a single-family home in gallons per day;

COD_{sft} = Average loading of COD in the wastewater from a single-family home in pounds per day;

SS_{sft} = Average loading of suspended solids in the wastewater from a single-family home in pounds per day;

$FLOW_{avg}$ = Estimated flow of wastewater which will enter the sewerage system from a user in gallons per day;

COD_{avg} = Estimated loading of COD which will enter the sewerage system from a user in pounds per day;

SS_{avg} = Estimated loading of suspended solids which will enter the sewerage system from a user in pounds per day.

For fiscal year 2022-23, the proportions of the total operation and maintenance and capital costs attributable to flow, chemical oxygen demand, and suspended solids have been assigned the following values:

A	=	0.3863
B	=	0.3210
C	=	0.2927

The service charge for each sewage unit is determined by dividing the total required supplemental revenue by the total number of sewage units in the District. The service charge for each parcel is determined by multiplying the service charge for each sewage unit by the number of sewage units attributable to the parcel, which in turn, is determined by the class of real property and the sewage unit formula and the flow, COD and SS loadings from Table 1, which shows the corresponding value for each class of real property in District No. 14.

Based upon presently anticipated sources of funds, the service charge rate for fiscal year 2022-23 is \$487.88 per sewage unit. Parcels with significantly lower water usage may be eligible for a reduced rate pursuant to the terms of the *Master Service Charge Ordinance of County Sanitation District No. 14 of Los Angeles County*.

DESCRIPTION OF PARCELS RECEIVING SERVICES AND IDENTIFICATION OF AMOUNT OF CHARGE FOR EACH PARCEL

All parcels of real property within the 2022-23 Tax Rate Areas as shown in Table 2 are receiving or benefiting from the services and facilities of District No. 14. Additionally, the parcels listed in Table 3, which do not fall within the Tax Rate Areas shown in Table 2, are receiving or benefiting from the services and facilities of District No. 14. Said parcels are more particularly described in maps prepared in accordance with Section 327, Revenue and Taxation Code, which are on file in the office of the County Assessor, which maps are hereby incorporated herein by reference.

All commercial and institutional parcels assessed a service charge based on the Los Angeles County Assessor's current tax roll shall be charged on the basis of not less than one (1.0) sewage unit.

No charge shall be imposed on the owner or owners of any parcels as to which the fair market value of improvements is less than \$1,000 as determined on the basis of the Assessor's current tax roll. This assumption is predicated on the fact that this type of parcel would be a vacant piece of land; however, should subsequent evaluation reveal that the property is not vacant, then an appropriate service charge would be levied.

**TABLE 1
LOADINGS FOR EACH CLASS OF LAND USE**

<u>DESCRIPTION</u>	<u>UNIT OF MEASURE</u>	<u>FLOW (Gallons per Day)</u>	<u>COD (Pounds per Day)</u>	<u>SUSPENDED SOLIDS (Pounds per Day)</u>
RESIDENTIAL				
Single Family Home	Dwelling Unit	260	1.22	0.59
Condominiums	Dwelling Unit	195	0.92	0.44
Multi-Unit Residential	Dwelling Unit	156	0.73	0.35
Mobile Home Parks	No. of Spaces	156	0.73	0.35
COMMERCIAL				
Hotel/Motel/Rooming House	Room	125	0.54	0.28
Store	1000 ft ²	100	0.43	0.23
Supermarket	1000 ft ²	150	2.00	1.00
Shopping Center	1000 ft ²	325	3.00	1.17
Regional Mall	1000 ft ²	150	2.10	0.77
Office Building	1000 ft ²	200	0.86	0.45
Medical, Dental, Veterinary Clinic or Building	1000 ft ²	300	1.29	0.68
Restaurant	1000 ft ²	620	10.34	3.10
Indoor Theatre	1000 ft ²	125	0.54	0.28
Car Wash				
Tunnel - No Recycling	1000 ft ²	3,700	15.86	8.33
Tunnel - Recycling	1000 ft ²	2,700	11.74	6.16
Wand	1000 ft ²	700	3.00	1.58
Bank, Credit Union	1000 ft ²	100	0.43	0.23
Service Shop, Vehicle Maintenance & Repair Shop	1000 ft ²	100	0.43	0.23
Animal Kennels	1000 ft ²	100	0.43	0.23
Gas Station	1000 ft ²	100	0.43	0.23
Auto Sales	1000 ft ²	100	0.43	0.23
Wholesale Outlet	1000 ft ²	100	0.43	0.23
Nursery/Greenhouse	1000 ft ²	25	0.11	0.06
Manufacturing	1000 ft ²	200	1.86	0.70
Light Manufacturing =< 300,000 sq ft	1000 ft ²	25	0.23	0.09
Light Manufacturing > 300,000 sq ft	1000 ft ²	10	0.09	0.05
Lumber Yard =< 300,000 sq ft	1000 ft ²	25	0.23	0.09
Lumber Yard > 300,000 sq ft	1000 ft ²	10	0.09	0.05
Warehousing =< 300,000 sq ft	1000 ft ²	25	0.23	0.09
Warehousing > 300,000 sq ft	1000 ft ²	10	0.09	0.05
Open Storage =< 300,000 sq ft	1000 ft ²	25	0.23	0.09
Open Storage > 300,000 sq ft	1000 ft ²	10	0.09	0.05
Drive-in Theatre	1000 ft ²	20	0.09	0.05
Night Club	1000 ft ²	350	1.50	0.79

<u>DESCRIPTION</u>	<u>UNIT OF MEASURE</u>	<u>FLOW (Gallons per Day)</u>	<u>COD (Pounds per Day)</u>	<u>SUSPENDED SOLIDS (Pounds per Day)</u>
COMMERCIAL				
Bowling/Skating	1000 ft ²	150	1.76	0.55
Club& Lodge Halls	1000 ft ²	125	0.54	0.27
Auditorium, Amusement	1000 ft ²	350	1.50	0.79
Golf Course and Park (Structures and Improvements)	1000 ft ²	100	0.43	0.23
Campground, Marina, Recreational Vehicle Park	Sites, Slips, or Spaces	55	0.34	0.14
Convalescent Home	Bed	125	0.54	0.28
Horse Stables	Stalls	25	0.23	0.09
Laundromat	1000 ft ²	3,825	16.40	8.61
Mortuary, Funeral Home	1000 ft ²	100	1.33	0.67
Health Spa, Gymnasium With Showers	1000 ft ²	600	2.58	1.35
Without Showers	1000 ft ²	300	1.29	0.68
Convention Center, Fairground, Racetrack, Sports Stadium/Arena	Average Daily Attendance	10	0.04	0.02
INSTITUTIONAL				
College/University	Student	20	0.09	0.05
Private School	1000 ft ²	200	0.86	0.45
Library, Museum	1000 ft ²	100	0.43	0.23
Post Office (Local)	1000 ft ²	100	0.43	0.23
Post Office (Regional)	1000 ft ²	25	0.23	0.09
Church	1000 ft ²	50	0.21	0.11

**TABLE 2
TAX RATE AREAS IN SANITATION DISTRICT NO. 14**

00229	00237	00242	00254	00255
00264	01446	01599	01632	01751
01779	01837	01838	01948	01962
01977	01993	02036	02279	02368
02370	02400	02401	02404	02405
02406	02413	02428	02431	02432
02437	02438	02440	02441	02443
02459	02498	02546	02548	02549
02551	02959	03440	03446	03452
03466	03468	03650	03733	03803
03853	03881	03905	03907	03909
03912	03981	03994	04170	04299
04647	04754	04786	04817	04820
04823	04826	04837	04840	04841
04844	04846	04852	04854	04856
04860	04861	04863	04866	04878
04879	04889	04890	04891	04892
04893	04895	04896	04897	04899
04901	04911	05221	05227	05228
05229	05290	05292	05372	05392
05397	05401	05403	05404	05405
05406	05407	05409	05412	05438
05452	05454	05456	05457	05458
05459	05460	05469	05471	05494
05553	05558	05559	05569	05605
05606	05610	05618	05627	05628
05631	05635	05636	05642	05695
05720	05726	05729	05733	05739
05744	05747	05755	05799	05814
05815	05816	05818	05821	05823

05824	05827	05828	05835	05837
05838	05844	05845	05847	05849
05850	05854	05858	05859	05861
05863	05864	05866	05870	05871
05872	05877	05881	05882	05884
05885	05886	05887	05888	05889
05891	05895	05896	05897	05899
06024	06026	06048	06083	06085
06098	06104	06105	06106	06109
06117	06122	06124	06164	06171
06176	06228	06239	06243	06257
06273	06274	06317	06393	06587
06673	06727	06731	06741	06840
06851	07238	07264	07350	07613
07639	07712	07713	07714	07715
07888	08021	08023	08083	08085
08369	08388	08393	08545	08557
08563	08583	08622	08648	08650
08773	09041	09205	09537	09540
09543	09554	09557	09562	09568
09569	09575	09592	09595	09596
09598	09609	09776	09777	09778
09779	09805	09809	09810	09812
09816	09826	09827	09841	09845
09886	09895	09905	09911	09915
09916	09918	09919	09920	09923
09927	09929	09930	09931	09932
09933	09934	09991	09993	09994
09995	09997	10221	10226	10228
10229	10234	10240	10241	10259
10261	10264	10312	10322	10332

10351	10402	10404	10460	10464
10474	10475	10482	10553	10572
10605	10626	10647	10664	10665
10666	10668	10669	10670	10724
10725	10773	10775	10776	10780
10800	11057	11082	11091	11092
11093	11096	11120	11148	11177
11188	11230	11251	11336	11354
11361	11374	11379	11384	11398
11415	11430	11435	11441	11442
11443	11487	11489	11490	11491
11531	11581	11586	11633	11635
11649	11697	11698	11718	11822
11871	11872	12128	12264	12389
12555	12556	12568	12591	12640
12659	12660	12662	12666	12672
12673	12735	12748	12751	12760
12762	12777	12834	12840	12863
12888	13279	13312	13346	13375
13377	13378	13446	13447	13463
13468	13471	13472	13508	13509
13529	13558	13585	13616	13620
13621	13625	13799	13800	13801
13809	13812	13817	13856	13895
13900	13901	13903	13904	13910
13911	13913	13916	13918	13920
13923	13927	13928	13931	13932
13935	13950	13987	13988	13991
13992	13993	13996	13997	14008
14012	14019	14020	14030	14031
14055	14066	14068	14123	14135

14136	14137	14138	14139	14140
14144	14146	14154	14244	14292
14293	14294	14304	14306	14307
14308	14347	14376	14400	14432
14439	14440	14442	14447	14448
14449	14452	14453	14456	14504
14522	14523	14524	14527	14530
14532	14540	14541	14542	14543
14544	14545	14573	14575	14641
14646	14653	14659	14660	14666
14677	14688	14729	14732	14742
14743	14744	14850	14851	14852
14854	14881	14883	14884	14885
14886	14887	14888	14889	14890
14892	14894	14895	14896	14897
14904	14928	14930	14944	14952
15004	15005	15011	15013	15014
15018	15020	15021	15026	15032
15035	15059	15068	15069	15076
15102	15122	15126	15129	15130
15133	15134	15176	15195	15197
15198	15219	15225	15229	15230
15232	15233	15268	15270	15271
15272	15276	15305	15309	15323
15328	15329	15330	15334	15336
15341	15345	15346	15347	15371
15373	15375	15376	15415	15472
15473	15474	15557	15559	15571
15770	15772	15777	15805	15806
15808	15809	15810	15846	16137
16148	16149	16157	16161	16219

16225	16282	16302	16303	16304
16327	16343	16347	16349	16351
16420	16421	16424	16425	16510
16652	16668	16669	16724	16731
16732	16766	16779	16782	16823
16825	16826	16832	16929	16934
16937	16938	16996		

**TABLE 3
PARCEL NUMBERS SERVED BY SANITATION DISTRICT NO. 14
OUTSIDE OF TAX RATE AREAS**

3001094033	3001138001	3001138002	3001138003	3001138004	3005039001
3005039002	3005039003	3005039004	3005039005	3005039006	3005039007
3005039008	3005039009	3005039010	3005039011	3005039012	3005039014
3005040011	3005040012	3005040013	3005040014	3005040015	3005040016
3005040017	3005040018	3005040019	3005040020	3005040021	3005040022
3005040023	3005040024	3005040025	3005040026	3005040027	3005040028
3005040029	3005040035	3005040036	3005040037	3005040038	3005040039
3005040040	3005040041	3005040042	3005040043	3005040044	3005049002
3005049023	3101009025	3101014045	3101015029	3110006021	3128009106
3129027055	3129027062	3204068057	3204085027	3208016102	

**County Sanitation District No. 14 of Los Angeles County
Operating Fund Budget (\$000)
Fiscal Year 2022-23**

	Adopted 2021-22	Proposed 2022-23
<u>Starting Balance</u>	\$ 24,760	\$ 26,699
<u>Sources of Funds</u>		
Service Charge	\$ 33,643	\$ 33,647
Industrial Waste Charges	2,754	2,670
Contract Revenue	911	1,072
Agricultural and Recycled Water Sales	439	481
Total Operating Revenue	37,747	37,870
Ad Valorem Tax Revenue	1,843	2,376
Interest ⁽¹⁾	627	133
Total Non-Operating Revenue	2,470	2,509
Transfers from Restricted Funds	3,490	1,637
Total Transfers In	3,490	1,637
Total Sources of Funds	\$ 43,707	\$ 42,016
<u>Use of Funds</u>		
Joint Administration Operations	\$ 3,181	\$ 3,825
Sewer System Operations	685	564
Treatment Plant Operations	12,292	12,306
Other Operational Expenditures	141	111
Operations and Maintenance Expense	16,299	16,806
Joint Administration Capital	285	263
Sewer System Capital	-	500
Treatment Plant Capital	4,625	1,250
Other Capital Expenditures	-	100
Capital Expense	4,910	2,113
Loan Repayment	6,856	-
Bond Repayment	9,998	13,641
Debt Service	16,854	13,641
Transfers to Designated Reserves	9,784	10,422
Transfers Out	9,784	10,422
Total Use of Funds	\$ 47,847	\$ 42,982
<u>Ending Balance</u>	\$ 20,621	\$ 25,734

(1) Interest revenue in the FY21-22 budget included revenues from designated funds. For FY22-23, interest revenue displayed is only generated by monies in the operating fund.

**County Sanitation District No. 14 of Los Angeles County
Capital Project Wastewater Budget (\$000)**

Project Name	Description	FY22-23 Budget	Estimated Completion	Total Budget (1)
District 14 Non-Reinforced Concrete Sewer Rehabilitation (Misc Projects)	Rehabilitation of deteriorated sewer	400	6/30/30	4,600
Avenue H Trunk Sewer Rehabilitation	Rehabilitation of deteriorated sewer	50	6/30/25	4,900
Trunk E Sewer Rehabilitation	Rehabilitation of deteriorated sewer	50	6/30/25	2,100
	Sewer System Total	<u>500</u>		
Lancaster WRP Power Distribution System Modifications	Modernization of the existing system to include redundant power feeds and improve the maintainability and reliability of the power systems	1,000	12/30/22	4,500
Lancaster WRP Maintenance Building	Improvements to ancillary infrastructure	150	12/31/23	450
Lancaster WRP Miscellaneous Maintenance and E&I Capital Projects	Contingency funding for unplanned capital projects at the Lancaster WRP	100	12/31/32	2,640
	Treatment Plants Total	<u>1,250</u>		
	Total Capital Projects	<u><u>1,750</u></u>		

(1) Includes past, current, and future amounts

**County Sanitation District No. 14 of Los Angeles County
Operating Fund Budget (\$000)
Fiscal Year 2022-23**

	Unrestricted	Designated			Restricted	Total
	Operating Fund	Emergency	O&M Financial Stability	Capital Projects Financial Stability	Capital Improvement	
Starting Reserve Balance	\$ 26,699	455	34,657	8,534	598	70,942
Operating Revenue	37,870	-	-	-	-	37,870
Non-Operating Revenue ⁽¹⁾	2,509	2	173	43	3	2,730
Capital Revenue ⁽²⁾	-	-	-	-	1,037	1,037
Transfers In	1,637	1	15,373	-	-	17,011
Operations and Maintenance Expense	16,806	-	-	-	-	16,806
Capital Expense	2,113	-	-	-	-	2,113
Debt Service	13,641	-	-	-	-	13,641
Transfers Out	10,422	-	-	4,952	1,637	17,011
Ending Balance	<u>25,734</u>	<u>458</u>	<u>50,203</u>	<u>3,625</u>	<u>0</u>	<u>80,019</u>

(1) Non-operating revenue for Designated and Restricted Reserves represents projected interest revenue.

(2) Capital revenue for the Capital Improvement Fund represents projected Connection Fee Revenue.

**County Sanitation District No. 14 of Los Angeles County
Wastewater Budget Rate and Other Information Summary
Fiscal Year 2022-23**

	<u>Adopted 2021-22</u>	<u>Proposed 2022-23</u>
<u>Service Charge Rate</u>	487.88	487.88
 <u>Industrial Waste (Surcharge) Rates</u>		
Flow (\$ per MGY)	3,232.00	3,232.00
COD (\$ per 1000 lbs)	363.80	363.80
SS (\$ per 1000 lbs)	878.20	878.20
Peak Flow (\$ per gpm)	621.60	621.60
 <u>Projected Sewage Units</u>		
Residential/Commercial	68,958	68,965
Industrial Waste	1,926	2,627
Industrial Waste Contract	250	128
Contract In	110	62
Total Served Sewage Units	<u>71,244</u>	<u>71,783</u>

Sanitation Districts of Los Angeles County
Wastewater Budget Explanation and Glossary of Terms
Fiscal Year 2022-23

Introduction

The budget package for each District consists of the following sections:

- **Operating Fund Wastewater Budget:** Details of the sources and uses of funds for the Operating Fund, which is the only Unrestricted Reserve fund as described in the District’s wastewater reserve policy. The preliminary budget for the upcoming fiscal year is compared to the final adopted budget for the current fiscal year.
- **Proposed Capital Projects:** Shows major capital projects budgeted expenditures for the fiscal year. If a District has no major capital projects budgeted, this section is omitted.
- **Designated and Restricted Reserve Budget:** Provides beginning and ending balances of each category of reserves along with major inflows to and outflows from that reserve.
- **Rate and Other Information Summary:** Shows current and budgeted rates for the various user fees; summary of projected sewage units; and other metrics.

Terms used in the Budget

Below are explanations of budget line items and other terms used in the budgets. Note that some terms may not apply for certain Districts.

Operating Fund Beginning Balance	Projected cash balance in the Operating Fund as of July 1 at the beginning of the fiscal year shown.
Ad Valorem Taxes Revenue	The District’s share of Ad Valorem (property) taxes paid by property owners in the District.
Service Charge Revenue	Fees paid by residential, commercial and small industrial users of the District’s wastewater system. These fees are generally collected on the property tax bill as a separate line item.
Industrial Waste Revenue	Fees paid by large industrial users of the District’s wastewater system.
Contract Revenue	Sales of reclaimed water; commodity and energy revenue; leases; and other similar sources of revenue.
Interest Revenue	Interest generated by District’s Unrestricted and Designated Reserves.
Grant Revenue	Grant proceeds received, generally state and/or federal grants toward capital projects.

Loan Proceeds	Funds received from loans taken out to finance capital projects, primarily State Revolving Fund Clean Water Loans.
Transfers from Capital Improvement Funds	Funds transferred from Capital Improvement Funds to be used toward capital expenditures.
Joint Administration Operations Expenditures	The District's share of Joint Administration Operating Expenditures less any operational or non-operational Joint Administration Revenues
Joint Outfall Operations Expenditures	The District's share of Joint Outfall System Operating Expenditures less any operational or non-operational Joint Outfall System Revenues
District's Sewer System Operations Expenditures	Expenditures related to operating and maintaining the District's sewers and pumping plants.
Treatment Plant Operations Expenditures	Expenditures related to operating and maintaining treatment plants.
Composting Facility Operations and Maintenance Expenditures	Expenditures related to operating and maintaining composting facilities.
Contract Disposal Operations and Maintenance Expenditures	Expenditures related to the operation and maintenance for conveyance and treatment of wastewater performed by another entity.
Other Operational Expenditures	The District's operational expenditures that are not directly related to the District's facilities, such as insurance, annexations, and certain regulatory work.
Joint Administration Capital Expenditures	The District's share of Joint Capital Expenses minus Joint Capital Revenues.
District Sewer System Capital Expenditures	Capital expenditures related to rehabilitation or expansion of the District's sewers and pumping plants.
Treatment Plant Capital Expenditures	Capital expenditures related to upgrade, repair or expansion of treatment plants.
Composting Facility Capital Expenditures	Capital expenditures related to upgrade, repair or expansion of composting facilities.
Field Office Capital Expenditures	Capital expenditures related to upgrade, repair or expansion of field offices.
Contract Disposal Capital Expenditures	Capital expenditures related to conveyance and treatment of wastewater performed by another entity.

Loan Repayment	Interest and principal payments toward loans, primarily State Revolving Fund Clean Water Loans.
Bond Repayment	Interest and principal payments toward bond debt.
Transfers to Designated Reserves	Surplus funds at the end of the fiscal year not required for operating or cash-flow purposes that are transferred to designated reserves. Designated reserves are primarily used to help stabilize future rates and to set aside funds for future capital projects.
Operating Fund Ending Balance	Projected balance in the Operating Fund as of June 30 at the end of the fiscal year shown.
Total Served Sewage Units	Total number of Sewage Units (single family home equivalent dischargers) that are served by treatment plants owned by the Sanitation Districts.