

JOINT OUTFALL AGREEMENT

THIS JOINT OUTFALL AGREEMENT (“**Agreement**”) is made as of July 1, 2022 (“**Effective Date**”) and is among the following 17 districts:

COUNTY SANITATION DISTRICT NO. 1 OF LOS ANGELES COUNTY,
COUNTY SANITATION DISTRICT NO. 2 OF LOS ANGELES COUNTY,
COUNTY SANITATION DISTRICT NO. 3 OF LOS ANGELES COUNTY,
COUNTY SANITATION DISTRICT NO. 5 OF LOS ANGELES COUNTY,
COUNTY SANITATION DISTRICT NO. 8 OF LOS ANGELES COUNTY,
COUNTY SANITATION DISTRICT NO. 15 OF LOS ANGELES COUNTY,
COUNTY SANITATION DISTRICT NO. 16 OF LOS ANGELES COUNTY,
COUNTY SANITATION DISTRICT NO. 17 OF LOS ANGELES COUNTY,
COUNTY SANITATION DISTRICT NO. 18 OF LOS ANGELES COUNTY,
COUNTY SANITATION DISTRICT NO. 19 OF LOS ANGELES COUNTY,
COUNTY SANITATION DISTRICT NO. 21 OF LOS ANGELES COUNTY,
COUNTY SANITATION DISTRICT NO. 22 OF LOS ANGELES COUNTY,
COUNTY SANITATION DISTRICT NO. 23 OF LOS ANGELES COUNTY,
COUNTY SANITATION DISTRICT NO. 28 OF LOS ANGELES COUNTY,
COUNTY SANITATION DISTRICT NO. 29 OF LOS ANGELES COUNTY,
COUNTY SANITATION DISTRICT NO. 34 OF LOS ANGELES COUNTY, and
SOUTH BAY CITIES SANITATION DISTRICT OF LOS ANGELES COUNTY

(collectively, the “**Signatory Districts**” and each individually a “**District.**”)

A. Pursuant to the provisions of the County Sanitation District Act (Chapter 3, Part 3, Division 5 of the Health and Safety Code of the State of California) and other applicable laws, the Signatory Districts have previously jointly owned and operated a common sewerage system known as the “**Joint Outfall System**” in accordance with a series of joint exercise of powers agreements commonly known as *Joint Outfall Agreements*, the most recent of which is entitled the *Joint Outfall Agreement* and became effective July 1, 2020.

B. Studies have shown that it is economically and environmentally advantageous for the Joint Outfall System to provide treatment and disposal by: (a) one downstream treatment plant discharging effluent to the ocean (hereinafter referred to as the “**Joint Water Pollution Control Plant**”), and (b) a network of upstream water reclamation plants discharging effluent and providing water for reuse. The upstream water reclamation plants return the untreated solids to the sewers for processing at the downstream Joint Water Pollution Control Plant. The system of sewers, pumping plants and other incidental sanitation works is so constructed that wastewater from any given District can be treated at one or more of the foregoing treatment plants.

C. By virtue of the foregoing, the Signatory Districts have determined that the Joint Outfall System will be a system of sewers, pumping plants, treatment plants, outfalls and incidental sanitation works that will be constructed, maintained, and operated as one unit.

D. The Signatory Districts have determined that the existence of a Joint Outfall System that can accommodate the demands of any of the Signatory Districts is of benefit to all of the Signatory Districts, and, further, that the efficient operation and maintenance of each of the facilities encompassed within the Joint Outfall System is of benefit to all of the Signatory Districts.

E. The Signatory Districts have determined that the most equitable manner of distributing capital and operation and maintenance costs attributable to the Joint Outfall System continues to be by apportioning said costs between the Signatory Districts on the basis of each District's use of the Joint Outfall System measured in terms of sewage units, defined below, which takes into account the quantity and strength of the wastewater. The Signatory Districts, in consultation with Staff and each other District, have concluded that the most efficient, cost effective way to operate and maintain the Joint Outfall System is to bring certain local facilities, to the extent feasible and possible, and including those local facilities previously owned by individual Districts (collectively the "**Local Facilities**"), into and made a part of the unified Joint Outfall System. A list of the Local Facilities is included as Exhibit A to this Agreement. Each District agrees and understands that the unified ownership, operation and maintenance and concomitant expenses of Local Facilities is beneficial to all Signatory Districts.

F. While this Agreement intends to consolidate, to the extent feasible and possible, Local Facilities into the Joint Outfall System, there are certain specific and limited local circumstances where small sewers and related improvements will continue to be the responsibility of the individual Signatory District (the "**Local Sewerage Facilities**"). All Local Sewerage Facilities will be owned, operated and maintained by the individual Signatory District separate and apart from the remainder of the Joint Outfall System.

G. In addition to the issues concerning Local Facilities, the Signatory Districts have further discussed and determined that industrial waste ("Industrial Wastewater") conveyance and treatment is a necessary function of the Joint Outfall System. The Signatory Districts have determined that the most equitable and efficient process for Industrial Wastewater treatment is to create a uniform rate of charges for Industrial Wastewater with all revenue derived from industries discharging Industrial Wastewater being paid into the Joint Outfall System in order to offset Joint Outfall expenses.

H. The Board of Directors of each of the Signatory Districts finds and declares by resolution duly adopted that the objects and purposes of the County Sanitation District Act and of the Health and Safety Code of California will be accomplished efficiently and economically, and that it will be in the public interest and to the advantage of said Districts to acquire, construct, maintain, operate, and use jointly with all Signatory Districts the Joint Outfall System in the proportions and subject to the terms and conditions as set forth in this Agreement.

NOW, THEREFORE, the Signatory Districts agree as follows:

1. DEFINITIONS. For the purpose of this Agreement:

1.1. **Chief Engineer** means the Chief Engineer and General Manager of the County Sanitation Districts of Los Angeles County.

1.2. **District No. 2** means County Sanitation District No. 2 of Los Angeles County.

1.3. **Facilities** refers to and includes the real property, along with any infrastructure and physical improvements that comprise a new or existing asset.

1.4. **Joint Capital Improvement Fund** is defined in Section 8.1 of this Agreement.

1.5. **Joint Outfall System** means the system of wastewater collection, treatment and disposal facilities consisting of one downstream treatment plant discharging effluent to the ocean, a network of upstream water reclamation plants, sewers, pumping plants, outfalls, and incidental sanitation works as shown on the map as Exhibit B and as listed in Exhibit C and as that system may be modified or expanded pursuant to the terms of this Agreement.

1.6. **Local Sewerage Facilities** means certain sewer lines and other necessary and related incidental sanitation works that are connected to the Joint Outfall System but have no regional benefit or potential benefit; convey flow from only one District; would be traditionally owned, operated and maintained by cities or LA County but the District owns, operates and maintains by special arrangement; and, for sewers, are generally eight (8) inches or less in diameter (as of the Effective Date of this Agreement only District No. 29 will have Local Sewerage Facilities).

1.7. **Local Facilities** means those facilities listed on Exhibit A of this Agreement that are not current Joint Outfall System assets but become Joint Outfall System assets as of the Effective Date.

1.8. **Sewage Unit** means the anticipated average daily quantity of sewage (wastewater) flow and strength from a typical single family home measured in terms of flow, chemical oxygen demand, and suspended solids as more particularly defined and established in Exhibit D.

1.9. **Surcharge Revenue** means the revenue derived from the Wastewater Treatment Surcharge program as provided in the Wastewater Ordinance.

1.10. **Wastewater Ordinance** means an ordinance providing for the administration of an industrial wastewater control system, for regulating sewer construction and sewer use, for the imposition of permit requirements for industrial wastewater dischargers, for the prohibition, regulation and pretreatment of industrial wastewaters, for the imposition of fees and charges, for the distribution of revenue, for the implementation of federal and state pollution control regulations and for the implementation of other methods of controlling and regulating the discharge of wastewaters, dated April 1, 1972, and as thereafter amended.

2. JOINT PARTICIPATION

The Signatory Districts shall participate jointly in the proportions specified below in the acquisition, construction, operation, and maintenance of the Joint Outfall System including both

the parts already acquired and constructed and the parts that may be acquired and constructed in the future, and to pay for the costs attributable to the Joint Outfall System, as specified below.

3. DISTRICT NO. 2 THE APPOINTED AGENT

3.1. Subject to any limitations or conditions set forth below, District No. 2 shall have full authority for the acquisition, construction, operation, and maintenance of the sites, facilities and equipment that comprise the Joint Outfall System.

3.2. Such authority shall include the payment of all costs incurred by or to be paid in connection with the acquisition, construction, operation, and maintenance of the Joint Outfall System, and each District shall pay or cause to be paid into the funds of District No. 2, its proportionate share of those costs, in accordance with the provisions below.

3.3. Such authority shall extend to the financing, acquisition of necessary land or interests therein, together with such facilities and equipment as are found necessary for construction, operation, and maintenance of the Joint Outfall System. District No. 2 shall manage the wastewater and effluent flow throughout the Joint Outfall System, determine the extent of treatment to be provided by each of the treatment plants included in the Joint Outfall System, and manage and/or sell all biosolids, effluent, electrical power, or by-products arising out of the operation of the Joint Outfall System.

3.4. District No. 2 may exercise this authority either directly or through contractual arrangements with others. Without limiting the generality of the foregoing sentence and notwithstanding any other provisions of this Agreement, District No. 2 shall have full authority as agent for the Signatory Districts to enter into joint powers agreements upon such terms and conditions as are specified therein with other governmental agencies and to enter into agreements with any joint powers entity created thereby, relating to the ownership and operation of any of the assets within the System, including the acquisition of a Facility, the financing of a Facility, and the design, construction, start-up and operation of a Facility.

3.5. Such authority shall include providing security for the payment of any debt that may be incurred by a joint powers agency or other legal entity which owns or has any interest in the Joint Outfall System.

3.6. District No. 2 is authorized to make application for and receive such grants or loans as may from time to time become available under various programs of federal, state or local governments.

4. ESTABLISHMENT OF JOINT OUTFALL RESERVES

4.1. Joint Outfall reserves shall be established in order to provide for increased financial stability in the funding of the operations of the Joint Outfall System. Each Signatory District shall contribute an initial amount, and subsequent amounts as needed, into the reserve funds in the ratio that the number of sewage units attributable to each such District bears to the aggregate number of sewage units attributable to all of the Signatory Districts. Reserve funds target levels will be established by means of a Joint Outfall Reserve Policy approved by each of the Signatory Districts.

4.2. All funds held in the Joint Outfall Reserves shall be apportioned among each of the Signatory Districts in the ratio that the number of sewage units attributable to each such District bears to the aggregate number of sewage units attributable to whole of the Joint Outfall System.

5. ALLOCATION AND PAYMENT OF COSTS

5.1. Cost Determination on the Basis of Sewage Units. The Chief Engineer shall determine annually the number of sewage units attributable to each Signatory District. The sewage units attributable to each Signatory District for the purposes of this Agreement shall not include industrial wastewater sewage units. Such determination shall govern the allocation of costs, including amounts owed by the Signatory Districts under other agreements, between the Signatory Districts.

5.2. Establishment of Annual Charges to the Signatory Districts. District No. 2 shall annually establish the required revenue to perform the functions of the Joint Outfall System, including revenues required to pay all expenses of the Joint Outfall System, including, without limitation expenses related to Local Facilities and costs attributable to any existing disposal contracts, and to replenish reserves, as needed, and as described in Section 4. Projected system revenues, including recycled water sales, interest revenue, and revenue from industrial dischargers as described in Section 7, shall be subtracted from this required revenue and each Signatory District must pay, on at least an annual basis, its proportionate share of this amount (annual revenue requirement less system revenues) as described in Section 5.1.

5.3. Payments of Debt Service. Payments for debt service related to any assets that are part of the Joint Outfall System, shall be apportioned among the Signatory Districts as described in Section 5.1.

5.4. Refunds on Service Charge. In the event of a rebate, refund or reduced service charge, as defined in each Signatory District's Master Service Charge Ordinance, District No. 2 shall transfer an amount equal to the proportion of the sewage units subject to the rebate, refund or reduced charge divided by the total sewage units determined in Section 5.1 multiplied by the annual charges paid in Section 5.2.

5.5. Payment of Joint Administration Costs. Each Signatory District's share of Joint Administration Expenses as described in the Joint Administration Agreement to which all Signatory Districts are a party, or other distributed costs in any future or alternative agreement agreed to by the Signatory Districts, may be paid using Joint Outfall Reserves or Joint Outfall Revenue if the proportional share of each District is the same as the proportional share of Joint Outfall costs.

6. INDIVIDUAL SIGNATORY DISTRICT'S RESPONSIBLE FOR ITS OWN LOCAL COSTS

Local costs incurred by a Signatory District for the benefit of the incurring District and not for the benefit of Joint Outfall System shall be paid by the District for whose benefit such costs are incurred, and shall not be allocated among the other Signatory Districts.

7. INDUSTRIAL WASTE REVENUE

Revenue derived from discharging Industrial Wastewater into the Joint Outfall System, including, but not limited to, surcharge revenue and the peak flow charge but excluding connection and capacity fees, shall be deposited into the Joint Outfall operating reserves to offset Joint Outfall expenses. Each Signatory District agrees that it is in the best interest of the Signatory Districts and that each Signatory District must adopt a uniform rate of charges for Industrial Wastewater Connection and capacity fees shall be collected by each District in accordance with their respective Master Connection Fee Ordinance.

8. PAYMENT FOR JOINT OUTFALL SYSTEM CAPITAL

8.1. Whenever an added burden is imposed on the Joint Outfall System, the District in which the added burden occurs shall pay into an account, to be denominated the “**Joint Outfall Capital Improvement Fund**”, an amount of money sufficient to offset the investments and net capital costs of improvements of the Joint Outfall System. The Chief Engineer and General Manager shall prepare cost calculations upon which this determination shall be based. This historically has been accomplished by the adoption of uniform Connection Fee Ordinances by all Signatory Districts.

8.2. All amounts paid into the Joint Capital Improvement Fund shall be apportioned among each of the Signatory Districts in the ratio that the number of sewage units attributable to each such District bears to the aggregate number of sewage units attributable to all of the Signatory Districts.

8.3. Notwithstanding the above, monies currently in the Signatory Districts’ capital improvement funds shall be transferred to the Joint Capital Improvement Fund in proportion with the replacement value of assets that were previously considered Local Sewerage Facilities and are now part of the Joint Outfall System.

9. DISTRIBUTION OF OTHER REVENUE

All revenue received from the sale of biosolids, effluent, electrical power or other by-products or which otherwise arises out of the ownership or operation of any Joint Outfall System facility shall be deposited in the Joint Outfall reserves and used to offset Joint Outfall expenses.

10. DISPOSAL OF WASTEWATER ORIGINATING OUTSIDE DISTRICT

Each of the Signatory Districts undertakes and agrees that it will not allow the use of the Joint Outfall System, directly or indirectly, for the disposal of wastewaters originating outside its territorial limits except in the manner, to the extent, and on the conditions agreed upon and consented to by each of the other Signatory Districts. In the event that the contracted entitlement of said outside source does not exceed one one-tenth of one percent (.1%) of the total flow in the Joint Outfall System, the consent of the other Signatory Districts shall not be required and all wastewater so received from said outside territory pursuant to such agreement shall be regarded as the wastewater of the District originally receiving the same insofar as the use and allocation of costs of the Joint Outfall System is in any way affected thereby. However, if the contracted entitlement of said outside source does exceed one one-tenth of one percent (.1%) of

the total flow in the Joint Outfall System, the consent of the other Signatory Districts shall be required and the sewage units associated with said contract together with any such contract heretofore entered into shall be apportioned to the Signatory Districts in the ratio that the number of sewage units originating in each District bears to the aggregate number of sewage units originating in all of the Signatory Districts.

11. PROTECTION OF THE JOINT OUTFALL SYSTEM

11.1. The Joint Outfall System shall not be used by any District for any purpose other than the conveyance, treatment, reuse, and disposal of wastewater and storm water; disposal or sale of by-products; and any other legal use approved by District No. 2, and said use shall be subject to the terms and conditions set forth in the Wastewater Ordinance heretofore adopted by all Signatory Districts as that Ordinance may hereafter be amended by all parties hereto, or as any similar ordinance adopted by all Signatory Districts may from time to time provide.

11.2. No Signatory District shall in any way grant, encumber, limit, or restrict its interest in the Joint Outfall System, or partition or seek to partition the same or have any part thereof set apart in severalty, without the prior consent of the other Signatory Districts.

12. ADDITION OF FACILITIES TO JOINT OUTFALL SYSTEM

If the Chief Engineer determines that a sewerage facility advances the collective objectives of the Signatory Districts, that facility shall become part of the Joint Outfall System. The Chief Engineer shall certify that fact and shall attach appropriate documentation to this Agreement.

13. TITLE TO REAL PROPERTY

13.1. Fee title to real property required for the Joint Outfall System for the use and benefit of the Signatory Districts shall be acquired by, and held in the name of, the District in which the said real property is located, whether such acquisition is by purchase, condemnation, gift or otherwise.

13.2. Fee title to real property required by the Joint Outfall System, but not located within any Signatory District, shall be acquired by and held in the name of District No. 2 for the use and benefit of said Districts.

14. SETTLEMENT OF DISPUTE OR CONTROVERSY

If any dispute or controversy arises in connection with the books, records, or accounts of any Signatory District pertaining to the Joint Outfall System or in connection with the acquisition, construction, operation, maintenance, repair, construction, reconstruction, or enlargement of the Joint Outfall System, or in connection with any of the affairs or operation thereof, then the Board of Directors of each Signatory District shall appoint or designate one member thereof as an arbitrator, and said arbitrators so chosen shall act as a Board of Arbitration in connection with such dispute or controversy, and the findings of fact approved by the vote of a majority of the members of said Board of Arbitration shall be binding and conclusive upon all the parties hereto, and may be enforced judicially by any Signatory District.

15. WITHDRAWAL

15.1. This Agreement and the Joint Outfall System provided hereby shall continue in effect so long as it shall be to the interest and advantage of two or more Signatory Districts. If at any time it should cease to be to the interest and advantage of any Signatory District to continue as a party to this Agreement, and its Board of Directors has so found and declared by resolution adopted by a majority of all of its members, it may withdraw from this Agreement and terminate its obligations hereunder after sixty (60) days notice in writing to the other Signatory Districts of its intention so to do, and by the full and complete discharge of all its debts and obligations hereunder for which it shall be or become liable up to the date of its withdrawal.

15.2. If any Signatory District withdraws from this Agreement, this Agreement will continue in effect thereafter as to the remaining Districts in like manner as if the withdrawing District had never been a party to the Agreement. Any District so withdrawing shall not be entitled to be reimbursed for any contributions previously made by it, directly or indirectly to the Joint Outfall System, and no payment shall be made to such withdrawing District. The withdrawing District shall continue to be responsible for its proportionate share of the obligations heretofore incurred by District No. 2 on its behalf. Each remaining District's ownership of the Joint Outfall System will be augmented proportionately.

16. DISSOLUTION OR REORGANIZATION

In the event of dissolution or reorganization of the Joint Outfall System, ownership shall be apportioned to each Signatory District in the ratio that the number of sewage units attributable to each District bears to the aggregate number of sewage units attributable to all of the Signatory Districts as determined by the Chief Engineer.

17. SUPERSESION OF PRIOR AGREEMENT

This Agreement will supersede the Joint Outfall Agreement that became effective July 1, 2020 as of the Effective Date of this Agreement.

IN WITNESS WHEREOF, each Signatory District has by resolution duly approved and adopted this Joint Outfall Agreement and authorized the Chairperson of its Board of Directors to execute the same and deliver it to each of the other Signatory Districts.

ATTEST:

COUNTY SANITATION DISTRICT NO. 1 OF
LOS ANGELES COUNTY

Secretary

Chairperson

ATTEST:

COUNTY SANITATION DISTRICT NO. 2 OF
LOS ANGELES COUNTY

Secretary

Chairperson

ATTEST:

COUNTY SANITATION DISTRICT NO. 3 OF
LOS ANGELES COUNTY

Secretary

Chairperson

ATTEST:

COUNTY SANITATION DISTRICT NO. 5 OF
LOS ANGELES COUNTY

Secretary

Chairperson

ATTEST:

COUNTY SANITATION DISTRICT NO. 8 OF
LOS ANGELES COUNTY

Secretary

Chairperson

ATTEST:

COUNTY SANITATION DISTRICT NO. 15 OF
LOS ANGELES COUNTY

Secretary

Chairperson

ATTEST:

COUNTY SANITATION DISTRICT NO. 16 OF
LOS ANGELES COUNTY

Secretary

Chairperson

ATTEST:

COUNTY SANITATION DISTRICT NO. 17 OF
LOS ANGELES COUNTY

Secretary

Chairperson

ATTEST:

COUNTY SANITATION DISTRICT NO. 18 OF
LOS ANGELES COUNTY

Secretary

Chairperson

ATTEST:

COUNTY SANITATION DISTRICT NO. 19 OF
LOS ANGELES COUNTY

Secretary

Chairperson

ATTEST:

COUNTY SANITATION DISTRICT NO. 21 OF
LOS ANGELES COUNTY

Secretary

Chairperson

ATTEST:

COUNTY SANITATION DISTRICT NO. 22 OF
LOS ANGELES COUNTY

Secretary

Chairperson

ATTEST:

COUNTY SANITATION DISTRICT NO. 23 OF
LOS ANGELES COUNTY

Secretary

Chairperson

ATTEST:

COUNTY SANITATION DISTRICT NO. 28 OF
LOS ANGELES COUNTY

Secretary

Chairperson

ATTEST:

COUNTY SANITATION DISTRICT NO. 29 OF
LOS ANGELES COUNTY

Secretary

Chairperson

ATTEST:

COUNTY SANITATION DISTRICT NO. 34 OF
LOS ANGELES COUNTY

Secretary

Chairperson

ATTEST:

SOUTH BAY CITIES SANITATION DISTRICT
OF LOS ANGELES COUNTY

Secretary

Chairperson

APPROVED AS TO FORM:

District Counsel

Exhibit A
Local Facilities

Facility Name	Facility Type	District
104th Street Trunk	Sewer	05
120th Street Extension #2 Trunk	Sewer	05
120th Street Extension Trunk	Sewer	05
135th Street Trunk	Sewer	05
159th Street Extension Trunk	Sewer	08
166th Street Cross-Connection	Sewer	02
203 Road Street Trunk	Sewer	05
209th Street Trunk	Sewer	19
212th Street Extension Trunk	Sewer	05
216th Street Relief Trunk	Sewer	08
216th Street Relocation Trunk	Sewer	08
216th Street Trunk	Sewer	08
219th Street Trunk	Sewer	19
5th Avenue Trunk	Sewer	21
70th Way Extension Trunk	Sewer	02
9th Street Connection Trunk	Sewer	05
Abbey Street Trunk	Sewer	15
Alameda Street Extension Trunk	Sewer	01
Alhambra "A" Line	Sewer	16
Alhambra Road Relief Trunk, Section 2	Sewer	16
Alhambra Road Trunk	Sewer	16
Allen Avenue Relief Trunk, Section 1	Sewer	16
Allen Avenue Relief Trunk, Section 3	Sewer	16
Allen Avenue Relief Trunk, Section 4	Sewer	16
Allen Avenue Trunk, Section 3	Sewer	16
Allen Avenue Trunk, Section 5	Sewer	16
Allen Avenue Trunk, Sections 1,2,&4	Sewer	16
Allington Street Pumping Plant Force Main	Sewer	03
Almanson Street Extension Trunk	Sewer	16
Alondra Park Trunk	Sewer	05
Amar Road Relief Trunk	Sewer	15
Amar Road Trunk	Sewer	15
Anaheim Street Trunk	Sewer	03
Anaheim Street Trunk Connection at Mahanna Avenue	Sewer	03
Arcadia-Sierra Madre Relief Trunk, Section 1	Sewer	15
Arcadia-Sierra Madre Relief Trunk, Section 2	Sewer	15
Arcadia-Sierra Madre Trunk, Section 2 Relief	Sewer	15
Arcadia-Sierra Madre Trunk, Section 2 Relief Extension	Sewer	15
Arcadia-Sierra Madre Trunk, Sections 2&5	Sewer	15

Facility Name	Facility Type	District
Arcadia-Sierra Madre Trunk, Sections 3&2A	Sewer	15
Arizona Avenue Diversion Trunk	Sewer	02
Arizona Avenue Relief Trunk	Sewer	02
Arizona Avenue Trunk, Section 1	Sewer	02
Arizona Avenue Trunk, Section 2	Sewer	02
Arlington Avenue Extension Trunk	Sewer	05
Arroyo Drive Trunk	Sewer	15
Arroyo Seco Trunk, Section 2	Sewer	16
Arroyo Seco Trunk, Section 3	Sewer	16
Arroyo Seco Trunk, Section 4	Sewer	16
Arroyo Seco Trunk, Section 5	Sewer	16
Arroyo Seco Trunk, Sections 5A,6,&5B	Sewer	16
Artesia Extension Trunk	Sewer	02
Artesia-Cerritos Trunk	Sewer	19
Arthur Avenue Trunk	Sewer	02
Atlantic Avenue Relief Trunk	Sewer	02
Atlantic Avenue Trunk	Sewer	02
Avalon Boulevard Trunk	Sewer	08
Aviation Boulevard Relief Trunk	Sewer	05
Aviation Boulevard Trunk	Sewer	05
Baldwin Park Trunk	Sewer	15
Base Line Trunk	Sewer	22
Beach Avenue Pumping Plant Emergency Bypass	Sewer	05
Beach Avenue Pumping Plant Force Main	Sewer	05
Beach Avenue Pumping Plant Force Main #2	Sewer	05
Beach Avenue Pumping Plant Influent Sewer	Sewer	05
Bellflower Trunk	Sewer	02
Belvedere Relief Trunk	Sewer	02
Belvedere Trunk	Sewer	02
Ben Lomond Relief Trunk	Sewer	22
Ben Lomond Trunk	Sewer	22
Benson Avenue Extension Trunk	Sewer	05
Bloomfield Avenue Trunk	Sewer	18
Bluff Cove Pumping Plant Force Main	Sewer	South Bay Cities
Bluff Cove Pumping Plant Force Main #2	Sewer	South Bay Cities
Bluff Cove Pumping Plant Force Main Gravity Trunk	Sewer	South Bay Cities
Bluff Cove Pumping Plant Influent Sewer	Sewer	South Bay Cities
Broadway Trunk	Sewer	18
Buena Vista Trunk	Sewer	22
Bullis Road Relief Trunk, Section 1	Sewer	01

Facility Name	Facility Type	District
Bullis Road Relief Trunk, Section 2	Sewer	01
Bullis Road Trunk	Sewer	01
Bullis Road-Temple Street Relief Trunk	Sewer	01
Bullis Road-Temple Street Trunk	Sewer	01
California Avenue Extension Trunk	Sewer	01
California Avenue Trunk	Sewer	15
Cameron Relief Trunk	Sewer	22
Cameron Trunk, Section 4	Sewer	22
Cameron Trunk, Sections 1,2,&3	Sewer	22
Center Street Trunk	Sewer	21
Central Gardens Pumping Plant Force Main	Sewer	01
Cerritos Trunk	Sewer	19
Cerritos-Shoemaker Trunk	Sewer	18
Chapel Avenue Trunk, Section 1	Sewer	16
Chapel Avenue Trunk, Section 2	Sewer	16
Chapel Avenue Trunk, Section 3	Sewer	16
Cienega Avenue Trunk	Sewer	22
City Terrace Diversion Extension Trunk	Sewer	02
City Terrace Trunk	Sewer	02
Claremont Connection Trunk	Sewer	21
Claremont Outfall Trunk	Sewer	21
Claremont Relief Trunk	Sewer	21
Clifton Pumping Plant Force Main Gravity Trunk	Sewer	South Bay Cities
Cloverlawn Trunk	Sewer	02
Colden Avenue Relief Trunk	Sewer	05
Colden Avenue Trunk	Sewer	05
Compton Avenue Trunk	Sewer	01
Compton Creek Extension Trunk, Section 1	Sewer	01
Compton Creek Extension Trunk, Section 2	Sewer	01
Compton Disposal Trunk	Sewer	01
Coney Trunk, Section 1	Sewer	22
Coney Trunk, Sections 2&3	Sewer	22
Continental Avenue Relief Trunk	Sewer	15
Continental Avenue Trunk	Sewer	15
Covina Connection Extension Trunk	Sewer	22
Crockett Boulevard-Glen Avenue Relief Trunk	Sewer	01
Crockett Boulevard-Glen Avenue Trunk	Sewer	01
Cypress Avenue Trunk	Sewer	22
Dairy Valley Trunk	Sewer	19
Dalton Relief Trunk	Sewer	22

Facility Name	Facility Type	District
Dalton Trunk, Section 3	Sewer	22
Dalton Trunk, Sections 1&2	Sewer	22
Davidson City Pumping Plant Emergency Bypass	Sewer	08
Davidson City Pumping Plant Force Main	Sewer	08
Davidson City Pumping Plant Influent Sewer	Sewer	08
Davidson City Trunk, Section 4	Sewer	08
Davidson City Trunk, Sections 1,2,&3	Sewer	08
De Forest Avenue Trunk	Sewer	03
Del Amo Replacement Trunk	Sewer	08
Del Amo Trunk	Sewer	08
Diamond Bar Trunk	Sewer	21
District #16 Main Relief Trunk	Sewer	16
District #17 Main Trunk	Sewer	17
District #19 Interceptor Trunk	Sewer	19
District #2 Interceptor Trunk	Sewer	02
District #2 Main Trunk	Sewer	02
District #21 Outfall Trunk	Sewer	21
District #22 Main Relief Trunk	Sewer	22
District #22 Main Trunk	Sewer	22
District #5 Main Relief Trunk	Sewer	05
District #5 Main Trunk	Sewer	05
Ditman Street Branch Trunk	Sewer	02
Double Avenue Trunk	Sewer	15
Douglas Avenue Relief Trunk	Sewer	02
Douglas Avenue Relocation Trunk	Sewer	02
Douglas Avenue Trunk	Sewer	02
Douglas Cut Pumping Plant Force Main	Sewer	South Bay Cities
Douglas Cut Pumping Plant Force Main #2	Sewer	South Bay Cities
Douglas Cut Pumping Plant Force Main #3	Sewer	South Bay Cities
Douglas Cut Pumping Plant Force Main Gravity Trunk	Sewer	South Bay Cities
Douglas Cut Pumping Plant Influent Sewer	Sewer	South Bay Cities
Downey Avenue Extension Trunk	Sewer	02
Downey Trunk	Sewer	02
Downey-Bellflower Diversion Relief Trunk	Sewer	02
Downey-Bellflower Diversion Trunk	Sewer	02
Downey-Bellflower Extension Trunk	Sewer	02
Downey-Bellflower Relief Trunk Relocation	Sewer	02
Downey-Bellflower Relief Trunk, Section 2	Sewer	02
Downey-Bellflower Relief Trunk, Section 4	Sewer	02
Downey-Bellflower Trunk	Sewer	02

Facility Name	Facility Type	District
Duarte Relief Trunk	Sewer	22
Duarte Trunk	Sewer	22
East Artesia Trunk, Section 4	Sewer	19
East Artesia Trunk, Sections 1,2,3,&5	Sewer	19
East Compton Boulevard Extension Trunk	Sewer	02
East Compton Boulevard Relief Trunk	Sewer	02
East Compton Boulevard Relief Trunk #2	Sewer	02
East Imperial Highway Relief Trunk	Sewer	18
East Imperial Highway Trunk	Sewer	18
East Road Trunk	Sewer	08
East Rosecrans Avenue Trunk, Section 1	Sewer	05
East Rosecrans Avenue Trunk, Section 2	Sewer	05
Eastside Interceptor Sewer	Sewer	29
Eastside Interceptor Trunk	Sewer	29
El Monte Avenue Trunk	Sewer	15
El Nido Relief Trunk	Sewer	05
El Nido Trunk	Sewer	05
El Porto Trunk	Sewer	South Bay Cities
Elaine Avenue Trunk	Sewer	19
Emerald Avenue Trunk	Sewer	21
Emerald Wash Trunk	Sewer	21
Fawcett Avenue Pumping Plant Force Main	Sewer	15
Ferris Road Trunk	Sewer	15
Figueroa Street Relief Trunk	Sewer	08
Figueroa Street Trunk	Sewer	08
First Street Diversion Trunk	Sewer	21
First Street Trunk, Section 1A & Connections To First Street Trunk System	Sewer	21
First Street Trunk, Sections 1&2	Sewer	21
Florence Avenue Trunk	Sewer	18
Flower Street Trunk	Sewer	05
Foothill Boulevard Main Trunk	Sewer	28
Foster Road Trunk	Sewer	02
Frampton Avenue Trunk	Sewer	08
Freeman Avenue Relief Trunk	Sewer	05
Fullerton Road Trunk	Sewer	19
Gardena Pump Relief Trunk, Section 4	Sewer	05
Gardena Pump Relief Trunk, Sections 2&3	Sewer	05
Gardena Pump Trunk	Sewer	05
Gardena Pumping Plant Emergency Bypass #1	Sewer	05

Facility Name	Facility Type	District
Gardena Pumping Plant Emergency Bypass #2	Sewer	05
Gardena Pumping Plant Force Main #1	Sewer	05
Gardena Pumping Plant Force Main #2	Sewer	05
Gardena Pumping Plant Force Main #3	Sewer	05
Gardena Pumping Plant Influent Sewer	Sewer	05
Garey Avenue Trunk	Sewer	21
Garfield Avenue Diversion Relief Trunk	Sewer	02
Garfield Avenue Diversion Trunk	Sewer	02
Garfield Avenue Diversion Trunk, Connection "A"	Sewer	02
Garfield Avenue Extension Trunk	Sewer	02
Garfield Avenue Relief Trunk	Sewer	02
Garfield Avenue Trunk	Sewer	02
Grace Street Relief Trunk	Sewer	08
Grace Street Trunk, Section 1	Sewer	08
Grace Street Trunk, Sections 2&3	Sewer	08
Gramercy Place Trunk, Section 1	Sewer	05
Gramercy Place Trunk, Section 2	Sewer	05
Gramercy Place Trunk, Section 3	Sewer	05
Grand Avenue Connection Trunk	Sewer	22
Grand Avenue Trunk	Sewer	15
Grape Street Trunk	Sewer	02
Graves Avenue Extension Trunk	Sewer	02
Green Lane Pumping Plant Emergency Bypass	Sewer	05
Green Lane Pumping Plant Emergency Storage	Sewer	05
Green Lane Pumping Plant Force Main	Sewer	05
Gridley Road Pumping Plant Force Main	Sewer	02
Hawthorne-Lawndale-Torrance Trunk	Sewer	05
Herondo Pumping Plant Emergency Bypass	Sewer	South Bay Cities
Herondo Pumping Plant Force Main	Sewer	South Bay Cities
Herondo Pumping Plant Force Main Gravity Trunk	Sewer	South Bay Cities
Herondo Pumping Plant Force Main Replacement	Sewer	South Bay Cities
Herondo Pumping Plant Influent Sewer	Sewer	South Bay Cities
Herondo Trunk, Section 1	Sewer	South Bay Cities
Herondo Trunk, Section 2	Sewer	South Bay Cities
Hill Drive Extension Relief Trunk	Sewer	15
Hill Drive Extension Trunk	Sewer	15
Hill Drive Extension Trunk, Line "A"	Sewer	15
Hollenbeck Street Trunk	Sewer	22
Hollywood-Riviera Pumping Plant Force Main #1 Replacement	Sewer	South Bay Cities
Hollywood-Riviera Pumping Plant Force Main #2	Sewer	South Bay Cities

Facility Name	Facility Type	District
Hollywood-Riviera Pumping Plant Influent Sewer	Sewer	South Bay Cities
Holmes-Willowbrook Trunk	Sewer	01
Holt Avenue Trunk	Sewer	22
Hooper Avenue-Compton Creek Trunk	Sewer	01
Hoyt Avenue Trunk	Sewer	15
Huntington Park Relief Extension Trunk	Sewer	01
Huntington Park Trunk	Sewer	01
Imperial Highway Extension Trunk	Sewer	05
Indiana Street Pumping Plant Connections	Sewer	02
Indiana Street Pumping Plant Emergency Bypass	Sewer	02
Indiana Street Pumping Plant Emergency Storage	Sewer	02
Indiana Street Pumping Plant Force Main	Sewer	02
Indiana Street Relief Trunk	Sewer	02
Indiana Street Trunk	Sewer	02
Indiana Street Trunk, Section 2 Relief	Sewer	02
Inglewood Diversion Trunk	Sewer	05
Inglewood Trunk #1	Sewer	05
Inglewood Trunk #1 Relief	Sewer	05
Inglewood Trunk #2	Sewer	05
Inglewood Trunk #3	Sewer	05
Irwin Avenue Trunk	Sewer	05
Irwindale Relief Trunk	Sewer	22
Irwindale Trunk, Section 1	Sewer	22
Irwindale Trunk, Sections 2,3,4,&5	Sewer	22
Jackson Street Trunk	Sewer	02
James Street Relief Trunk	Sewer	08
James Street Trunk	Sewer	08
Jane Street Branch Trunk	Sewer	02
Janet Lane Connection Trunk	Sewer	05
Janet Lane Trunk	Sewer	05
Keystone Trunk	Sewer	08
La Habra Heights Trunk, Section 1	Sewer	18
La Habra Heights Trunk, Section 2A	Sewer	18
La Habra Heights Trunk, Section 2B	Sewer	18
La Habra Heights Trunk, Section 3	Sewer	18
La Habra Heights Trunk, Section 4	Sewer	18
La Habra Heights Trunk, Section 5	Sewer	18
La Mirada Relief Trunk	Sewer	18
La Mirada Trunk, Section 3	Sewer	18
La Mirada Trunk, Sections 1&2	Sewer	18

Facility Name	Facility Type	District
La Salle Avenue Pumping Plant Connection Trunk	Sewer	05
La Salle Avenue Pumping Plant Emergency Bypass	Sewer	05
La Salle Avenue Pumping Plant Force Main	Sewer	05
La Salle Avenue Pumping Plant Influent Sewer	Sewer	05
La Verne Trunk, Section 1	Sewer	21
La Verne Trunk, Section 2	Sewer	21
La Verne Trunk, Section 3	Sewer	21
La Verne-"B" Street Trunk	Sewer	21
Lakewood Trunk	Sewer	03
Lamanda Park Replacement Trunk	Sewer	16
Lamanda Park Trunk	Sewer	16
Lark Ellen Trunk, Section 1	Sewer	22
Lark Ellen Trunk, Section 5A	Sewer	22
Lark Ellen Trunk, Sections 2&3	Sewer	22
Lark Ellen Trunk, Sections 4,5,&6	Sewer	22
Laurel Avenue Trunk	Sewer	18
Lemon Avenue Trunk	Sewer	21
Lincoln Avenue Trunk	Sewer	17
Loch Lomond Drive Trunk	Sewer	02
Lomita Trunk	Sewer	05
Lomita Trunk Extension	Sewer	05
Lomita Trunk Extension Relief	Sewer	05
Lomita Trunk Relocation	Sewer	05
Lone Hill Avenue Trunk	Sewer	22
Long Point Pumping Plant Emergency Bypass	Sewer	05
Long Point Pumping Plant Force Main	Sewer	05
Long Point Pumping Plant Influent Sewer	Sewer	05
Lorraine Trunk	Sewer	22
Los Coyotes Diagonal Relief Trunk	Sewer	03
Los Coyotes Diagonal Trunk	Sewer	03
Lower Azusa Road Trunk	Sewer	15
Lower Springs Road Trunk Replacement	Sewer	18
Lunada Bay Pumping Plant Emergency Bypass	Sewer	South Bay Cities
Lunada Bay Pumping Plant Force Main #1	Sewer	South Bay Cities
Lunada Bay Pumping Plant Force Main #2	Sewer	South Bay Cities
Lunada Bay Pumping Plant Force Main #3	Sewer	South Bay Cities
Lunada Bay Pumping Plant Influent Sewer	Sewer	South Bay Cities
Madison Street Trunk	Sewer	05
Madison Street Trunk Replacement	Sewer	05
Main Street Extension Trunk	Sewer	08

Facility Name	Facility Type	District
Main Street Pumping Plant Emergency Bypass	Sewer	08
Main Street Pumping Plant Force Main #2	Sewer	08
Main Street Pumping Plant Force Main #3	Sewer	08
Main Street Pumping Plant Force Main #4	Sewer	08
Main Street Pumping Plant Influent Sewer	Sewer	08
Main Street Relief Trunk	Sewer	08
Main Street Trunk	Sewer	08
Malaga Cove Pumping Plant #1 Emergency Bypass	Sewer	South Bay Cities
Malaga Cove Pumping Plant #1 Force Main	Sewer	South Bay Cities
Malaga Cove Pumping Plant #1 Force Main #2	Sewer	South Bay Cities
Malaga Cove Pumping Plant #1 Influent Sewer	Sewer	South Bay Cities
Malaga Cove Pumping Plant #2 Emergency Bypass	Sewer	South Bay Cities
Malaga Cove Pumping Plant #2 Force Main	Sewer	South Bay Cities
Malaga Cove Pumping Plant #2 Influent Sewer	Sewer	South Bay Cities
Malaga Cove Trunk	Sewer	South Bay Cities
Manchester Avenue Pump Relief Trunk	Sewer	05
Manchester Avenue Pump Trunk	Sewer	05
Manchester-Vermont Diversion Extension Trunk	Sewer	05
Manchester-Vermont Relief Trunk	Sewer	05
Maricopa Street Trunk	Sewer	05
Marina Pumping Plant #1 Emergency Bypass	Sewer	03
Marina Pumping Plant #1 Force Main	Sewer	03
Marina Pumping Plant #1 Force Main #2	Sewer	03
Marina Pumping Plant #1 Force Main Replacement	Sewer	03
Marina Pumping Plant #2 Emergency Bypass	Sewer	03
Marina Pumping Plant #2 Force Main #1	Sewer	03
Marina Pumping Plant #2 Force Main #2	Sewer	03
Marina Pumping Plant #3 Emergency Bypass	Sewer	03
Marina Pumping Plant #3 Force Main	Sewer	03
Marina Pumping Plant #3 Force Main #2	Sewer	03
Marina Pumping Plant #3 Force Main (Gravity Section)	Sewer	03
Marina Pumping Plant #3 Force Main Replacement	Sewer	03
Marina Pumping Plant #3 Influent Sewer	Sewer	03
Marina Relief Trunk, Section 1B	Sewer	03
Marina Relief Trunk, Section 2	Sewer	03
Marina Relief Trunk, Section 3	Sewer	03
Marina Relief Trunk, Section 4	Sewer	03
Marina Trunk, Section 1A	Sewer	03
Marina Trunk, Section 1B	Sewer	03
Marina Trunk, Section 2	Sewer	03

Facility Name	Facility Type	District
Marina Trunk, Section 3	Sewer	03
Marina Trunk, Section 4	Sewer	03
Market Street Trunk	Sewer	03
Marquardt Avenue Trunk	Sewer	18
Merced Trunk, Section 1	Sewer	15
Merced Trunk, Section 2	Sewer	15
Mills Avenue Trunk	Sewer	18
Moneta Extension Trunk, Section 1	Sewer	05
Moneta Extension Trunk, Section 1 Relief	Sewer	05
Moneta Extension Trunk, Section 2	Sewer	05
Moneta Trunk	Sewer	05
Monrovia Outfall Trunk	Sewer	15
Montebello City Relief Trunk	Sewer	02
Montebello City Trunk	Sewer	02
Montebello Diversion Trunk	Sewer	02
Montebello Interceptor Trunk, Section 3	Sewer	02
Montebello Interceptor Trunk, Sections 1&2	Sewer	02
Montebello Relief Trunk, Section 3	Sewer	02
Montebello Relief Trunk, Sections 1&2	Sewer	02
Montebello Trunk	Sewer	02
Montebello-Randolph Trunk	Sewer	02
Monterey Hills Trunk	Sewer	16
Monterey Hills-Alhambra Road Connection Trunk	Sewer	16
Monterey Park Diversion Trunk	Sewer	02
Monterey Park Extension Relief Trunk	Sewer	02
Monterey Park Extension Trunk	Sewer	02
Monterey Park Relief Trunk	Sewer	02
Mount San Antonio Trunk	Sewer	21
Mountain View-Belle Vernon Relief Extension Trunk	Sewer	01
Mountain View-Belle Vernon Trunk	Sewer	01
Nadeau Trunk, Section 3	Sewer	01
Nadeau Trunk, Section 4	Sewer	01
Nadeau Trunk, Sections 1&2	Sewer	01
Narbonne Avenue Connection Trunk	Sewer	05
Narbonne Avenue Trunk, Section 1(East)	Sewer	05
Narbonne Avenue Trunk, Section 1(West)	Sewer	05
Narbonne Avenue Trunk, Section 2	Sewer	05
Narbonne Avenue Trunk, Section 3	Sewer	05
Newman Avenue Connection Trunk	Sewer	15
Nogales Street Trunk	Sewer	21

Facility Name	Facility Type	District
North Long Beach Relief Trunk	Sewer	03
North Long Beach Trunk	Sewer	03
North Norwalk Trunk	Sewer	18
North Plant Outfall Relief Trunk	Sewer	18
North Plant Outfall Trunk	Sewer	18
North Plant Outfall Trunk Walnut Way Connection	Sewer	18
North Slope Connection Trunk	Sewer	05
North Torrance Extension Trunk	Sewer	05
North Torrance Trunk	Sewer	05
Norwalk Boulevard Trunk	Sewer	19
Norwalk Extension Trunk	Sewer	02
Norwalk-Santa Fe Springs Trunk	Sewer	18
Oak Street-Center Avenue Relief Trunk	Sewer	05
Oak Street-Center Avenue Relocation Trunk	Sewer	05
Oak Street-Center Avenue Trunk	Sewer	05
Old River School Road Relief Trunk, Section 1	Sewer	02
Old River School Road Relief Trunk, Section 5	Sewer	02
Old River School Road Relief Trunk, Sections 2&3	Sewer	02
Old River School Road Trunk, Section 3	Sewer	02
Old River School Road Trunk, Sections 1&2	Sewer	02
Orr And Day Road Trunk	Sewer	18
Palo Verde Trunk	Sewer	19
Palos Verdes North Slope Relief Trunk, Section 1	Sewer	05
Palos Verdes North Slope Relief Trunk, Section 1 Replacement	Sewer	05
Palos Verdes North Slope Replacement Trunk, Section 1A	Sewer	05
Palos Verdes North Slope Trunk, Section 1	Sewer	05
Palos Verdes North Slope Trunk, Section 2 Replacement	Sewer	05
Palos Verdes North Slope Trunk, Section 3 Replacement	Sewer	05
Palos Verdes North Slope Trunk, Sections 2&3	Sewer	05
Palos Verdes-Torrance Connection Trunk	Sewer	05
Parshall Flume At Marmion Way	Sewer	16
Pasadena East-West Interceptor Trunk	Sewer	16
Peck Road Pumping Plant Force Main	Sewer	15
Peck Road Pumping Plant Influent Sewer	Sewer	15
Peck Road Trunk	Sewer	15
Phillips Boulevard Relief Trunk	Sewer	21
Phillips Boulevard Trunk	Sewer	21
Phoebe Avenue Trunk	Sewer	18
Pico Avenue Trunk	Sewer	03
Pico Rivera Trunk	Sewer	02

Facility Name	Facility Type	District
Plaza Relief Trunk	Sewer	South Bay Cities
Plaza Trunk	Sewer	South Bay Cities
Polymer Plant Waste Water Disposal Line	Sewer	22
Pomona #4 Pumping Plant Force Main #1	Sewer	21
Pomona #4 Pumping Plant Force Main #2	Sewer	21
Pomona Boulevard Interceptor Trunk	Sewer	21
Pomona WRP Flow	Sewer	21
Pomona WRP Influent Sewer #1	Sewer	21
Pomona WRP Influent Sewer #2	Sewer	21
Potrero Avenue Trunk	Sewer	15
Prairie Avenue Trunk	Sewer	05
Puddingstone Trunk, Section 3	Sewer	22
Puddingstone Trunk, Section 4	Sewer	22
Puddingstone Trunk, Sections 1&2	Sewer	22
Puente Hills Landfill Facilities Sewer	Sewer	18
Puente Relief Trunk	Sewer	15
Puente Trunk	Sewer	15
Puente Trunk Connection To Joint Outfall H - Unit 7B	Sewer	15
Pump District #5 Connection Trunk	Sewer	03
Pump Districts #S 7&9 Connection Trunk	Sewer	03
Railroad Street Trunk	Sewer	21
Ramona Avenue Connection Trunk	Sewer	22
Ramona Avenue Trunk	Sewer	22
Randolph Street Trunk	Sewer	02
Raymond Avenue Trunk	Sewer	05
Redondo Beach Boulevard Extension Trunk	Sewer	05
River Avenue Trunk	Sewer	15
Rocha Street Trunk	Sewer	08
Rocket Street Pumping Plant Force Main	Sewer	03
Rosecrans Avenue Relief Trunk	Sewer	05
Rosecrans Avenue Trunk	Sewer	05
Rush Street Trunk	Sewer	15
Ruther Avenue Pumping Plant Force Main	Sewer	02
San Antonio Relief Trunk	Sewer	21
San Antonio Trunk	Sewer	21
San Dimas Connection Extension Trunk	Sewer	22
San Jose Creek Trunk	Sewer	15
San Marino Outfall Trunk	Sewer	16
Santa Anita Connection Trunk	Sewer	15
Santa Anita Outfall Trunk	Sewer	02

Facility Name	Facility Type	District
Santa Anita Outfall Trunk	Sewer	15
Santa Fe Avenue Trunk	Sewer	01
Santa Fe Springs Waste Water Line	Sewer	18
Santa Fe Street Relief Trunk	Sewer	18
Santa Fe Street Trunk	Sewer	18
Scott Avenue Relief Trunk	Sewer	18
Scott Avenue Trunk	Sewer	18
Sea Cove Pumping Plant Emergency Bypass	Sewer	05
Sea Cove Pumping Plant Force Main	Sewer	05
Sea Cove Pumping Plant Influent Sewer	Sewer	05
Sepulveda Boulevard Trunk	Sewer	08
Sepulveda-Figueroa Street Connecting Trunk	Sewer	08
Shoemaker Avenue Trunk	Sewer	18
Signal Hill Interceptor Relief Trunk	Sewer	03
Signal Hill Outfall Trunk	Sewer	29
SJCWRP Plant Outfalls	Sewer	18
Slack Road Trunk	Sewer	15
Sorensen Avenue Relief Trunk	Sewer	18
Sorensen Avenue Trunk	Sewer	18
South Bay Cities Main Extension #3 Relief Trunk	Sewer	South Bay Cities
South Bay Cities Main Pumping Plant Force Main	Sewer	South Bay Cities
South Bay Cities Main Pumping Plant Force Main #2	Sewer	South Bay Cities
South Bay Cities Main Pumping Plant Force Main #3	Sewer	South Bay Cities
South Bay Cities Main Pumping Plant Force Main (Gravity Section)	Sewer	South Bay Cities
South Bay Cities Main Pumping Plant Influent Sewer	Sewer	South Bay Cities
South Bay Cities Main Trunk	Sewer	South Bay Cities
South El Monte Trunk	Sewer	15
South Hawthorne-Warfield Avenue Extension Relief Trunk, Sections 4A&4C	Sewer	05
South Hawthorne-Warfield Avenue Extension Relief Trunk, Sections 4B&4D	Sewer	05
South Hawthorne-Warfield Avenue Extension Trunk, Section 4	Sewer	05
South Inglewood-Orange Avenue Trunk	Sewer	05
South Inglewood-Orange Avenue Trunk, Extension #1	Sewer	05
South Inglewood-Orange Avenue Trunk, Extension #2	Sewer	05
South Inglewood-Orange Avenue Trunk, Extension #3	Sewer	05
South Park Avenue Trunk	Sewer	01
South Plant Outfall Trunk	Sewer	18
South Torrance Trunk	Sewer	05

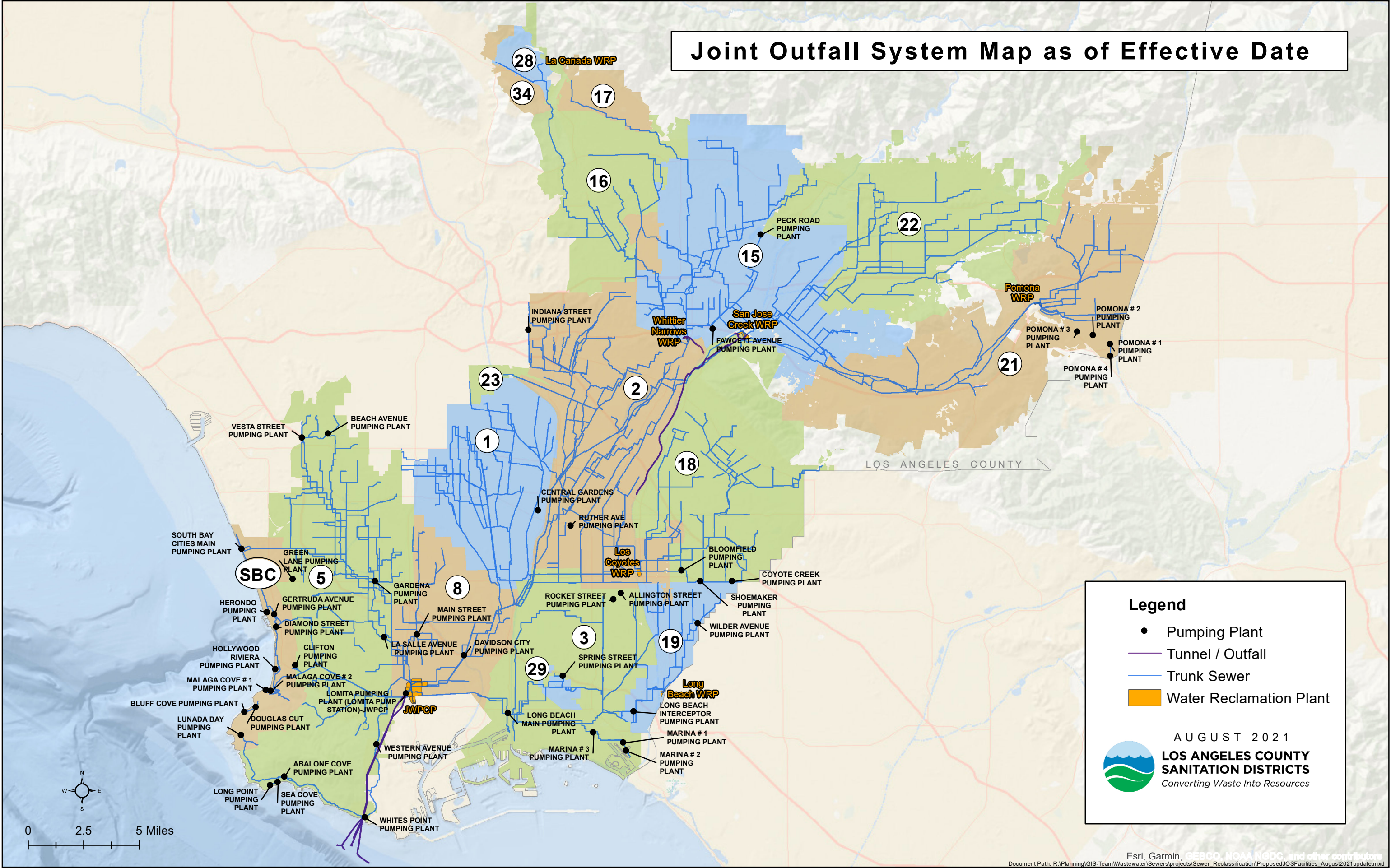
Facility Name	Facility Type	District
South Whittier Outfall & South Whittier Outfall Relief Relocation	Sewer	18
South Whittier Outfall Relief Trunk, Sections 1,2A,2B,2C,&3	Sewer	18
South Whittier Outfall Relief Trunk, Sections 2E&2F	Sewer	18
South Whittier Outfall Trunk, Section 5	Sewer	18
South Whittier Outfall Trunk, Section 6	Sewer	18
South Whittier Outfall Trunk, Sections 1,2,3,&4	Sewer	18
Stage Road Junction Trunk	Sewer	18
Stanford Avenue Trunk	Sewer	01
State Street Trunk	Sewer	01
Strawberry Avenue Relief Trunk	Sewer	05
Strawberry Avenue Trunk	Sewer	05
Studebaker Road Trunk	Sewer	19
Sunflower Trunk	Sewer	22
Sunset Avenue Trunk	Sewer	22
Swim Park Trunk	Sewer	22
Telegraph Road Trunk	Sewer	02
Torrance Extension Trunk	Sewer	05
Tract #5445 Relief Trunk	Sewer	02
Tract #5445 Trunk	Sewer	02
Tri-Cities Outfall Relief Trunk	Sewer	21
Tri-Cities Outfall Trunk	Sewer	21
Turnbull Canyon Trunk	Sewer	15
Tyler Avenue Relief Trunk	Sewer	15
Tyler Avenue Trunk	Sewer	15
Union Pacific Trunk	Sewer	02
Union Street Trunk	Sewer	02
Valinda Trunk	Sewer	15
Valley View Trunk	Sewer	18
Vermont Avenue Extension Trunk	Sewer	05
Vernon Extension Relief Trunk	Sewer	01
Vernon Extension Trunk	Sewer	01
Vernon Extension Trunk Connection at Newell Street	Sewer	01
Vesta Street Pumping Plant Emergency Bypass	Sewer	05
Vesta Street Pumping Plant Emergency Bypass #2	Sewer	05
Vesta Street Pumping Plant Force Main	Sewer	05
Vesta Street Pumping Plant Influent Sewer	Sewer	05
Via Campesina Trunk	Sewer	South Bay Cities
Victoria Street Relief Trunk	Sewer	08
Victoria Street Trunk	Sewer	08

Facility Name	Facility Type	District
Wadsworth Avenue-Long Street Trunk	Sewer	01
Wadsworth Avenue-Long Street Trunk Replacement	Sewer	01
Walnut Creek Trunk, Section 3	Sewer	22
Walnut Creek Trunk, Sections 1&2	Sewer	22
Walnut Way Trunk	Sewer	18
Washington Boulevard Trunk	Sewer	18
Water Street Trunk	Sewer	03
West Artesia Trunk	Sewer	19
West Torrance Trunk	Sewer	05
Western Avenue Trunk	Sewer	05
Wilcox Avenue Relief Trunk	Sewer	01
Wilcox Avenue Trunk	Sewer	01
Wilcox Avenue Trunk, Extension #1	Sewer	01
Wilder Avenue Pumping Plant Force Main	Sewer	19
Wilmington Avenue Trunk	Sewer	08
Woodruff Avenue Trunk	Sewer	02
Worsham Creek Relief Trunk	Sewer	18
Worsham Creek Replacement Trunk	Sewer	18
Worsham Creek Trunk	Sewer	18
Wright Road Trunk	Sewer	01
Allington Street Pumping Plant	Pumping Plant	03
Beach Avenue Pumping Plant	Pumping Plant	05
Bluff Cove Pumping Plant	Pumping Plant	South Bay Cities
Central Gardens Pumping Plant	Pumping Plant	01
Davidson City Pumping Plant	Pumping Plant	08
Douglas Cut Pumping Plant	Pumping Plant	South Bay Cities
Fawcett Avenue Pumping Plant	Pumping Plant	15
Gardena Pumping Plant	Pumping Plant	05
Green Lane Pumping Plant	Pumping Plant	05
Herondo Pumping Plant	Pumping Plant	South Bay Cities
Hollywood Riviera Pumping Plant	Pumping Plant	South Bay Cities
Indiana Street Pumping Plant	Pumping Plant	02
La Salle Avenue Pumping Plant	Pumping Plant	05
Lomita Pumping Plant (Lomita Pump Station)-JWPCP	Pumping Plant	08
Long Point Pumping Plant	Pumping Plant	05
Lunada Bay Pumping Plant	Pumping Plant	South Bay Cities
Main Street Pumping Plant	Pumping Plant	08
Malaga Cove # 1 Pumping Plant	Pumping Plant	South Bay Cities
Malaga Cove # 2 Pumping Plant	Pumping Plant	South Bay Cities
Marina # 1 Pumping Plant	Pumping Plant	03

Facility Name	Facility Type	District
Marina # 2 Pumping Plant	Pumping Plant	03
Marina # 3 Pumping Plant	Pumping Plant	03
Peck Road Pumping Plant	Pumping Plant	15
Pomona # 1 Pumping Plant	Pumping Plant	21
Pomona # 2 Pumping Plant	Pumping Plant	21
Pomona # 3 Pumping Plant	Pumping Plant	21
Pomona # 4 Pumping Plant	Pumping Plant	21
Rocket Street Pumping Plant	Pumping Plant	03
Ruther Ave Pumping Plant	Pumping Plant	02
Sea Cove Pumping Plant	Pumping Plant	05
South Bay Cities Main Pumping Plant	Pumping Plant	South Bay Cities
Vesta Street Pumping Plant	Pumping Plant	05
Wilder Avenue Pumping Plant	Pumping Plant	19

Exhibit B
Joint Outfall System Map as of Effective Date

Joint Outfall System Map as of Effective Date



Legend

- Pumping Plant
- Tunnel / Outfall
- Trunk Sewer
- Water Reclamation Plant

AUGUST 2021

LOS ANGELES COUNTY SANITATION DISTRICTS
Converting Waste Into Resources

0 2.5 5 Miles

Esri, Garmin, GEBCO, NOAA, NCEC, and other contributors
 Document Path: R:\Planning\GIS-Team\Wastewater\Sewers\projects\Sewer Reclassification\Proposed JOS Facilities August2021update.mxd

Exhibit C
Joint Outfall System Facilities as of Effective
Date

Facility Name	Facility Type
104th Street Trunk	Sewer
120" Ocean Outfall	Sewer
120th Street Extension #2 Trunk	Sewer
120th Street Extension Trunk	Sewer
135th Street Trunk	Sewer
159th Street Extension Trunk	Sewer
166th Street Cross-Connection	Sewer
203 Road Street Trunk	Sewer
209th Street Trunk	Sewer
212th Street Extension Trunk	Sewer
216th Street Relief Trunk	Sewer
216th Street Relocation Trunk	Sewer
216th Street Trunk	Sewer
219th Street Trunk	Sewer
5th Avenue Trunk	Sewer
60" Ocean Outfall	Sewer
70th Way Extension Trunk	Sewer
72" Ocean Outfall	Sewer
90" Ocean Outfall	Sewer
9th Street Connection Trunk	Sewer
Abbey Street Trunk	Sewer
Alameda Street Extension Trunk	Sewer
Alhambra "A" Line	Sewer
Alhambra Road Relief Trunk, Section 2	Sewer
Alhambra Road Trunk	Sewer
Allen Avenue Relief Trunk, Section 1	Sewer
Allen Avenue Relief Trunk, Section 3	Sewer
Allen Avenue Relief Trunk, Section 4	Sewer
Allen Avenue Trunk, Section 3	Sewer
Allen Avenue Trunk, Section 5	Sewer
Allen Avenue Trunk, Sections 1,2,&4	Sewer
Allington Street Pumping Plant Force Main	Sewer
Almanson Street Extension Trunk	Sewer
Alondra Park Trunk	Sewer
Amar Road Relief Trunk	Sewer
Amar Road Trunk	Sewer
Anaheim Street Trunk	Sewer
Anaheim Street Trunk Connection at Mahanna Avenue	Sewer
Arcadia-Sierra Madre Relief Trunk, Section 1	Sewer

Facility Name	Facility Type
Arcadia-Sierra Madre Relief Trunk, Section 2	Sewer
Arcadia-Sierra Madre Trunk, Section 2 Relief	Sewer
Arcadia-Sierra Madre Trunk, Section 2 Relief Extension	Sewer
Arcadia-Sierra Madre Trunk, Sections 2&5	Sewer
Arcadia-Sierra Madre Trunk, Sections 3&2A	Sewer
Arizona Avenue Diversion Trunk	Sewer
Arizona Avenue Relief Trunk	Sewer
Arizona Avenue Trunk, Section 1	Sewer
Arizona Avenue Trunk, Section 2	Sewer
Arlington Avenue Extension Trunk	Sewer
Arroyo Drive Trunk	Sewer
Arroyo Seco Trunk, Section 2	Sewer
Arroyo Seco Trunk, Section 3	Sewer
Arroyo Seco Trunk, Section 4	Sewer
Arroyo Seco Trunk, Section 5	Sewer
Arroyo Seco Trunk, Sections 5A,6,&5B	Sewer
Artesia Extension Trunk	Sewer
Artesia-Cerritos Trunk	Sewer
Arthur Avenue Trunk	Sewer
Atlantic Avenue Relief Trunk	Sewer
Atlantic Avenue Trunk	Sewer
Avalon Boulevard Trunk	Sewer
Aviation Boulevard Relief Trunk	Sewer
Aviation Boulevard Trunk	Sewer
Baldwin Park Trunk	Sewer
Base Line Trunk	Sewer
Beach Avenue Pumping Plant Emergency Bypass	Sewer
Beach Avenue Pumping Plant Force Main	Sewer
Beach Avenue Pumping Plant Force Main #2	Sewer
Beach Avenue Pumping Plant Influent Sewer	Sewer
Bellflower Trunk	Sewer
Belvedere Relief Trunk	Sewer
Belvedere Trunk	Sewer
Ben Lomond Relief Trunk	Sewer
Ben Lomond Trunk	Sewer
Benson Avenue Extension Trunk	Sewer
Bloomfield Avenue Trunk	Sewer
Bluff Cove Pumping Plant Force Main	Sewer
Bluff Cove Pumping Plant Force Main #2	Sewer
Bluff Cove Pumping Plant Force Main Gravity Trunk	Sewer

Facility Name	Facility Type
Bluff Cove Pumping Plant Influent Sewer	Sewer
Broadway Trunk	Sewer
Buena Vista Trunk	Sewer
Bullis Road Relief Trunk, Section 1	Sewer
Bullis Road Relief Trunk, Section 2	Sewer
Bullis Road Trunk	Sewer
Bullis Road-Temple Street Relief Trunk	Sewer
Bullis Road-Temple Street Trunk	Sewer
California Avenue Extension Trunk	Sewer
California Avenue Trunk	Sewer
Cameron Relief Trunk	Sewer
Cameron Trunk, Section 4	Sewer
Cameron Trunk, Sections 1,2,&3	Sewer
Center Street Trunk	Sewer
Central Gardens Pumping Plant Force Main	Sewer
Cerritos Trunk	Sewer
Cerritos-Shoemaker Trunk	Sewer
Chapel Avenue Trunk, Section 1	Sewer
Chapel Avenue Trunk, Section 2	Sewer
Chapel Avenue Trunk, Section 3	Sewer
Cienega Avenue Trunk	Sewer
City Terrace Diversion Extension Trunk	Sewer
City Terrace Trunk	Sewer
Claremont Connection Trunk	Sewer
Claremont Outfall Trunk	Sewer
Claremont Relief Trunk	Sewer
Clifton Pumping Plant Force Main Gravity Trunk	Sewer
Cloverlawn Trunk	Sewer
Colden Avenue Relief Trunk	Sewer
Colden Avenue Trunk	Sewer
Compton Avenue Trunk	Sewer
Compton Creek Extension Trunk, Section 1	Sewer
Compton Creek Extension Trunk, Section 2	Sewer
Compton Disposal Trunk	Sewer
Coney Trunk, Section 1	Sewer
Coney Trunk, Sections 2&3	Sewer
Continental Avenue Relief Trunk	Sewer
Continental Avenue Trunk	Sewer
Covina Connection Extension Trunk	Sewer
Crockett Boulevard-Glen Avenue Relief Trunk	Sewer

Facility Name	Facility Type
Crockett Boulevard-Glen Avenue Trunk	Sewer
Cypress Avenue Trunk	Sewer
Dairy Valley Trunk	Sewer
Dalton Relief Trunk	Sewer
Dalton Trunk, Section 3	Sewer
Dalton Trunk, Sections 1&2	Sewer
Davidson City Pumping Plant Emergency Bypass	Sewer
Davidson City Pumping Plant Force Main	Sewer
Davidson City Pumping Plant Influent Sewer	Sewer
Davidson City Trunk, Section 4	Sewer
Davidson City Trunk, Sections 1,2,&3	Sewer
De Forest Avenue Trunk	Sewer
Del Amo Replacement Trunk	Sewer
Del Amo Trunk	Sewer
Diamond Bar Trunk	Sewer
District #16 Main Relief Trunk	Sewer
District #17 Main Trunk	Sewer
District #19 Interceptor Trunk	Sewer
District #2 Interceptor Trunk	Sewer
District #2 Main Trunk	Sewer
District #21 Outfall Trunk	Sewer
District #22 Main Relief Trunk	Sewer
District #22 Main Trunk	Sewer
District #5 Main Relief Trunk	Sewer
District #5 Main Trunk	Sewer
Ditman Street Branch Trunk	Sewer
Double Avenue Trunk	Sewer
Douglas Avenue Relief Trunk	Sewer
Douglas Avenue Relocation Trunk	Sewer
Douglas Avenue Trunk	Sewer
Douglas Cut Pumping Plant Force Main	Sewer
Douglas Cut Pumping Plant Force Main #2	Sewer
Douglas Cut Pumping Plant Force Main #3	Sewer
Douglas Cut Pumping Plant Force Main Gravity Trunk	Sewer
Douglas Cut Pumping Plant Influent Sewer	Sewer
Downey Avenue Extension Trunk	Sewer
Downey Trunk	Sewer
Downey-Bellflower Diversion Relief Trunk	Sewer
Downey-Bellflower Diversion Trunk	Sewer
Downey-Bellflower Extension Trunk	Sewer

Facility Name	Facility Type
Downey-Bellflower Relief Trunk Relocation	Sewer
Downey-Bellflower Relief Trunk, Section 2	Sewer
Downey-Bellflower Relief Trunk, Section 4	Sewer
Downey-Bellflower Trunk	Sewer
Duarte Relief Trunk	Sewer
Duarte Trunk	Sewer
East Artesia Trunk, Section 4	Sewer
East Artesia Trunk, Sections 1,2,3,&5	Sewer
East Compton Boulevard Extension Trunk	Sewer
East Compton Boulevard Relief Trunk	Sewer
East Compton Boulevard Relief Trunk #2	Sewer
East Imperial Highway Relief Trunk	Sewer
East Imperial Highway Trunk	Sewer
East Road Trunk	Sewer
East Rosecrans Avenue Trunk, Section 1	Sewer
East Rosecrans Avenue Trunk, Section 2	Sewer
Eastside Interceptor Sewer	Sewer
Eastside Interceptor Trunk	Sewer
El Monte Avenue Trunk	Sewer
El Nido Relief Trunk	Sewer
El Nido Trunk	Sewer
El Porto Trunk	Sewer
Elaine Avenue Trunk	Sewer
Emerald Avenue Trunk	Sewer
Emerald Wash Trunk	Sewer
Fawcett Avenue Pumping Plant Force Main	Sewer
Ferris Road Trunk	Sewer
Figueroa Street Relief Trunk	Sewer
Figueroa Street Trunk	Sewer
First Street Diversion Trunk	Sewer
First Street Trunk, Section 1A & Connections To First Street Trunk System	Sewer
First Street Trunk, Sections 1&2	Sewer
Florence Avenue Trunk	Sewer
Flower Street Trunk	Sewer
Foothill Boulevard Main Trunk	Sewer
Foster Road Trunk	Sewer
Frampton Avenue Trunk	Sewer
Freeman Avenue Relief Trunk	Sewer
Fullerton Road Trunk	Sewer
Gardena Pump Relief Trunk, Section 4	Sewer

Facility Name	Facility Type
Gardena Pump Relief Trunk, Sections 2&3	Sewer
Gardena Pump Trunk	Sewer
Gardena Pumping Plant Emergency Bypass #1	Sewer
Gardena Pumping Plant Emergency Bypass #2	Sewer
Gardena Pumping Plant Force Main #1	Sewer
Gardena Pumping Plant Force Main #2	Sewer
Gardena Pumping Plant Force Main #3	Sewer
Gardena Pumping Plant Influent Sewer	Sewer
Garey Avenue Trunk	Sewer
Garfield Avenue Diversion Relief Trunk	Sewer
Garfield Avenue Diversion Trunk	Sewer
Garfield Avenue Diversion Trunk, Connection "A"	Sewer
Garfield Avenue Extension Trunk	Sewer
Garfield Avenue Relief Trunk	Sewer
Garfield Avenue Trunk	Sewer
Grace Street Relief Trunk	Sewer
Grace Street Trunk, Section 1	Sewer
Grace Street Trunk, Sections 2&3	Sewer
Gramercy Place Trunk, Section 1	Sewer
Gramercy Place Trunk, Section 2	Sewer
Gramercy Place Trunk, Section 3	Sewer
Grand Avenue Connection Trunk	Sewer
Grand Avenue Trunk	Sewer
Grape Street Trunk	Sewer
Graves Avenue Extension Trunk	Sewer
Green Lane Pumping Plant Emergency Bypass	Sewer
Green Lane Pumping Plant Emergency Storage	Sewer
Green Lane Pumping Plant Force Main	Sewer
Gridley Road Pumping Plant Force Main	Sewer
Hawthorne-Lawndale-Torrance Trunk	Sewer
Herondo Pumping Plant Emergency Bypass	Sewer
Herondo Pumping Plant Force Main	Sewer
Herondo Pumping Plant Force Main Gravity Trunk	Sewer
Herondo Pumping Plant Force Main Replacement	Sewer
Herondo Pumping Plant Influent Sewer	Sewer
Herondo Trunk, Section 1	Sewer
Herondo Trunk, Section 2	Sewer
Hill Drive Extension Relief Trunk	Sewer
Hill Drive Extension Trunk	Sewer
Hill Drive Extension Trunk, Line "A"	Sewer

Facility Name	Facility Type
Hollenbeck Street Trunk	Sewer
Hollywood-Riviera Pumping Plant Force Main #1 Replacement	Sewer
Hollywood-Riviera Pumping Plant Force Main #2	Sewer
Hollywood-Riviera Pumping Plant Influent Sewer	Sewer
Holmes-Willowbrook Trunk	Sewer
Holt Avenue Trunk	Sewer
Hooper Avenue-Compton Creek Trunk	Sewer
Hoyt Avenue Trunk	Sewer
Huntington Park Relief Extension Trunk	Sewer
Huntington Park Trunk	Sewer
Imperial Highway Extension Trunk	Sewer
Indiana Street Pumping Plant Connections	Sewer
Indiana Street Pumping Plant Emergency Bypass	Sewer
Indiana Street Pumping Plant Emergency Storage	Sewer
Indiana Street Pumping Plant Force Main	Sewer
Indiana Street Relief Trunk	Sewer
Indiana Street Trunk	Sewer
Indiana Street Trunk, Section 2 Relief	Sewer
Inglewood Diversion Trunk	Sewer
Inglewood Trunk #1	Sewer
Inglewood Trunk #1 Relief	Sewer
Inglewood Trunk #2	Sewer
Inglewood Trunk #3	Sewer
Irwin Avenue Trunk	Sewer
Irwindale Relief Trunk	Sewer
Irwindale Trunk, Section 1	Sewer
Irwindale Trunk, Sections 2,3,4,&5	Sewer
Jackson Street Trunk	Sewer
James Street Relief Trunk	Sewer
James Street Trunk	Sewer
Jane Street Branch Trunk	Sewer
Janet Lane Connection Trunk	Sewer
Janet Lane Trunk	Sewer
Joint Outfall A - Unit 1A Chino Basin Wastewater Line	Sewer
Joint Outfall A - Unit 1A Diamond Street Pumping Plant Force Main	Sewer
Joint Outfall A - Unit 1A Diamond Street Pumping Plant Influent Sewer	Sewer
Joint Outfall A - Unit 1A District 21 Interceptor	Sewer
Joint Outfall A - Unit 1A District 5 Interceptor	Sewer
Joint Outfall A - Unit 1A District 5 Interceptor Relief	Sewer
Joint Outfall A - Unit 1A Etiwanda-Edison Wastewater Line	Sewer

Facility Name	Facility Type
Joint Outfall A - Unit 1A Florence Avenue Interceptor	Sewer
Joint Outfall A - Unit 1A Gertruda Avenue Pumping Plant Force Main	Sewer
Joint Outfall A - Unit 1A Gertruda Avenue Pumping Plant Force Main Gravity Trunk	Sewer
Joint Outfall A - Unit 1A Gertruda Avenue Pumping Plant Influent Sewer	Sewer
Joint Outfall A - Unit 1A Gridley Road Interceptor	Sewer
Joint Outfall A - Unit 1A Long Beach WRP Influent Sewer	Sewer
Joint Outfall A - Unit 1A Long Beach WRP Interceptor Pumping Plant Emergency Bypass #1	Sewer
Joint Outfall A - Unit 1A Long Beach WRP Interceptor Pumping Plant Emergency Bypass #2	Sewer
Joint Outfall A - Unit 1A Long Beach WRP Interceptor Pumping Plant Force Main	Sewer
Joint Outfall A - Unit 1A Long Beach WRP Interceptor, Section 1, Connection Sewer	Sewer
Joint Outfall A - Unit 1A Long Beach WRP Interceptor, Section 1, Gravity Sewer	Sewer
Joint Outfall A - Unit 1A Long Beach WRP Interceptor, Section 1, Sludge Force Main	Sewer
Joint Outfall A - Unit 1A Long Beach WRP Interceptor, Section 1, Sludge Force Main Replacement	Sewer
Joint Outfall A - Unit 1A Long Beach WRP Interceptor, Section 2, Sewage Force Main	Sewer
Joint Outfall A - Unit 1A Long Beach WRP Interceptor, Section 2, Sludge Gravity Sewer	Sewer
Joint Outfall A - Unit 1A Long Beach WRP Sludge Gravity Sewer	Sewer
Joint Outfall A - Unit 1A Los Coyotes WRP Interceptor	Sewer
Joint Outfall A - Unit 1A North Long Beach Interceptor	Sewer
Joint Outfall A - Unit 1A San Jose Creek WRP Effluent Metering Line	Sewer
Joint Outfall A - Unit 1A San Jose Creek WRP Effluent Sewer	Sewer
Joint Outfall A - Unit 1A San Jose Creek WRP Influent Sewer	Sewer
Joint Outfall A - Unit 1A San Jose Creek WRP Interceptor	Sewer
Joint Outfall A - Unit 1A San Jose Creek WRP Outfall	Sewer
Joint Outfall A - Unit 1A South Hawthorne-Warfield Avenue Connection	Sewer
Joint Outfall A - Unit 1A South Hawthorne-Warfield Avenue Extension	Sewer
Joint Outfall A - Unit 1A Whittier Narrows WRP Effluent Bypass Line	Sewer
Joint Outfall A - Unit 1A Whittier Narrows WRP Effluent Conveyance Facilities	Sewer
Joint Outfall A - Unit 1A Whittier Narrows WRP Effluent Line	Sewer
Joint Outfall A - Unit 1A Whittier Narrows WRP Influent Sewer	Sewer
Joint Outfall A - Unit 1B	Sewer
Joint Outfall A - Unit 1C	Sewer
Joint Outfall A - Unit 2	Sewer
Joint Outfall A - Unit 3A	Sewer
Joint Outfall A - Unit 3B	Sewer

Facility Name	Facility Type
Joint Outfall A - Unit 3C	Sewer
Joint Outfall A - Unit 4	Sewer
Joint Outfall A - Unit 6	Sewer
Joint Outfall A - Unit 7	Sewer
Joint Outfall A - Unit 8	Sewer
Joint Outfall A - Unit 9	Sewer
Joint Outfall B - Unit 1A	Sewer
Joint Outfall B - Unit 1A Replacement	Sewer
Joint Outfall B - Unit 1B	Sewer
Joint Outfall B - Unit 1C	Sewer
Joint Outfall B - Unit 1C Replacement	Sewer
Joint Outfall B - Unit 1D	Sewer
Joint Outfall B - Unit 1D Relief	Sewer
Joint Outfall B - Unit 1E	Sewer
Joint Outfall B - Unit 1E Relief	Sewer
Joint Outfall B - Unit 1F	Sewer
Joint Outfall B - Unit 1F Relief	Sewer
Joint Outfall B - Unit 1G	Sewer
Joint Outfall B - Unit 1H	Sewer
Joint Outfall B - Unit 1J	Sewer
Joint Outfall B - Unit 1K	Sewer
Joint Outfall B - Unit 2A	Sewer
Joint Outfall B - Unit 2B	Sewer
Joint Outfall B - Unit 2B Relief	Sewer
Joint Outfall B - Unit 3A	Sewer
Joint Outfall B - Unit 3A Relief	Sewer
Joint Outfall B - Unit 3B	Sewer
Joint Outfall B - Unit 4A	Sewer
Joint Outfall B - Unit 4B	Sewer
Joint Outfall B - Unit 5A	Sewer
Joint Outfall B - Unit 5B	Sewer
Joint Outfall B - Unit 5C	Sewer
Joint Outfall B - Unit 5D	Sewer
Joint Outfall B - Unit 6A	Sewer
Joint Outfall B - Unit 6B	Sewer
Joint Outfall B - Unit 6C	Sewer
Joint Outfall B - Unit 6D	Sewer
Joint Outfall B - Unit 6E	Sewer
Joint Outfall B - Unit 6F	Sewer
Joint Outfall B - Unit 6G	Sewer

Facility Name	Facility Type
Joint Outfall B - Unit 6G Connection	Sewer
Joint Outfall B - Unit 6G Relief	Sewer
Joint Outfall B - Unit 6H	Sewer
Joint Outfall B - Unit 6H Relief	Sewer
Joint Outfall B - Unit 6H Replacement	Sewer
Joint Outfall B - Unit 6J	Sewer
Joint Outfall B - Unit 6J Relief	Sewer
Joint Outfall B - Unit 6K	Sewer
Joint Outfall B - Unit 6L	Sewer
Joint Outfall B - Unit 6M	Sewer
Joint Outfall B - Unit 7	Sewer
Joint Outfall B - Unit 7 Relief	Sewer
Joint Outfall B - Unit 8A	Sewer
Joint Outfall B - Unit 8B	Sewer
Joint Outfall B - Unit 8C	Sewer
Joint Outfall B - Unit 8D	Sewer
Joint Outfall B - Unit 8E	Sewer
Joint Outfall B - Unit 8F	Sewer
Joint Outfall B - Unit 8G	Sewer
Joint Outfall B - Unit 8G Relief	Sewer
Joint Outfall B - Unit 8H	Sewer
Joint Outfall B - Unit 8J	Sewer
Joint Outfall B - Unit 9A	Sewer
Joint Outfall B - Unit 9B	Sewer
Joint Outfall B - Unit 9C	Sewer
Joint Outfall C - Unit 1	Sewer
Joint Outfall C - Unit 1 Relief	Sewer
Joint Outfall C - Unit 1 Relief Emergency Bypass	Sewer
Joint Outfall C - Unit 2	Sewer
Joint Outfall C - Unit 3A	Sewer
Joint Outfall C - Unit 3B and 3B Relief	Sewer
Joint Outfall C - Unit 3B Relocation	Sewer
Joint Outfall C - Unit 3C	Sewer
Joint Outfall C - Unit 3D	Sewer
Joint Outfall C - Unit 3E	Sewer
Joint Outfall C - Unit 3E Relief	Sewer
Joint Outfall C - Unit 3E Replacement	Sewer
Joint Outfall C - Unit 3F	Sewer
Joint Outfall C - Unit 3G	Sewer
Joint Outfall C - Unit 3G Force Main #2	Sewer

Facility Name	Facility Type
Joint Outfall C - Unit 3G Force Main #2 (Gravity Section)	Sewer
Joint Outfall C - Unit 3H	Sewer
Joint Outfall C - Unit 4A	Sewer
Joint Outfall C - Unit 4B	Sewer
Joint Outfall C - Unit 4C	Sewer
Joint Outfall C - Unit 4C Relief	Sewer
Joint Outfall C - Unit 4C Replacement	Sewer
Joint Outfall C - Unit 4D	Sewer
Joint Outfall C - Unit 5A Replacement	Sewer
Joint Outfall C - Unit 5B	Sewer
Joint Outfall C - Unit 5C	Sewer
Joint Outfall C - Unit 6A	Sewer
Joint Outfall C - Unit 6B	Sewer
Joint Outfall C - Unit 6C Renovation	Sewer
Joint Outfall C - Unit 6D	Sewer
Joint Outfall C - Unit 6E	Sewer
Joint Outfall C - Unit 6F	Sewer
Joint Outfall C - Unit 6G	Sewer
Joint Outfall C - Unit 7A Replacement	Sewer
Joint Outfall C - Unit 7A(O)	Sewer
Joint Outfall C - Unit 7B	Sewer
Joint Outfall C - Unit 8A	Sewer
Joint Outfall C - Unit 8B	Sewer
Joint Outfall C - Unit 8C	Sewer
Joint Outfall C - Unit 8D	Sewer
Joint Outfall C - Unit 8E	Sewer
Joint Outfall D - Unit 1A	Sewer
Joint Outfall D - Unit 1B	Sewer
Joint Outfall D - Unit 1C	Sewer
Joint Outfall D - Unit 1D Replacement	Sewer
Joint Outfall D - Unit 1D(O)	Sewer
Joint Outfall D - Unit 1E Replacement	Sewer
Joint Outfall D - Unit 1E(O/A)	Sewer
Joint Outfall D - Unit 1F	Sewer
Joint Outfall D - Unit 1G(O)	Sewer
Joint Outfall D - Unit 2A	Sewer
Joint Outfall D - Unit 2B	Sewer
Joint Outfall D - Unit 3	Sewer
Joint Outfall D - Unit 4	Sewer
Joint Outfall D - Unit 5	Sewer

Facility Name	Facility Type
Joint Outfall D - Unit 6	Sewer
Joint Outfall D - Unit 6 Relief	Sewer
Joint Outfall D - Unit 7	Sewer
Joint Outfall D - Unit 8	Sewer
Joint Outfall D - Unit 9	Sewer
Joint Outfall D - Unit 9 Replacement	Sewer
Joint Outfall E - Unit 1	Sewer
Joint Outfall E - Unit 2	Sewer
Joint Outfall E - Unit 3	Sewer
Joint Outfall E - Unit 4	Sewer
Joint Outfall E - Unit 4 Relief	Sewer
Joint Outfall E - Unit 4 Relocation	Sewer
Joint Outfall E - Unit 5	Sewer
Joint Outfall E - Unit 6	Sewer
Joint Outfall F - Unit 1	Sewer
Joint Outfall F - Unit 2	Sewer
Joint Outfall F - Unit 3A	Sewer
Joint Outfall F - Unit 3A Relief	Sewer
Joint Outfall F - Unit 3B	Sewer
Joint Outfall F - Unit 3C	Sewer
Joint Outfall F - Unit 4	Sewer
Joint Outfall F - Unit 4 Relief	Sewer
Joint Outfall F - Unit 5	Sewer
Joint Outfall F - Unit 5 Relief	Sewer
Joint Outfall F - Unit 6	Sewer
Joint Outfall F - Unit 6 Relief	Sewer
Joint Outfall F - Unit 7A	Sewer
Joint Outfall F - Unit 7B	Sewer
Joint Outfall F - Unit 7C	Sewer
Joint Outfall F - Unit 7D	Sewer
Joint Outfall F - Unit 7E	Sewer
Joint Outfall F - Unit 7E Force Main #2	Sewer
Joint Outfall F - Unit 7F	Sewer
Joint Outfall F - Unit 7G	Sewer
Joint Outfall F - Unit 7G Force Main #2	Sewer
Joint Outfall F - Unit 7H	Sewer
Joint Outfall F - Unit 7J	Sewer
Joint Outfall G - Unit 1 Replacement	Sewer
Joint Outfall G - Unit 1(O)	Sewer
Joint Outfall G - Unit 2 Relief	Sewer

Facility Name	Facility Type
Joint Outfall G - Unit 2(O)	Sewer
Joint Outfall G - Unit 3	Sewer
Joint Outfall G - Unit 4	Sewer
Joint Outfall G - Unit 5	Sewer
Joint Outfall G - Unit 6	Sewer
Joint Outfall G - Unit 7	Sewer
Joint Outfall G - Unit 8	Sewer
Joint Outfall G - Unit 9 Connection Trunk	Sewer
Joint Outfall G - Unit 9 Trunk	Sewer
Joint Outfall H - Unit 1A	Sewer
Joint Outfall H - Unit 1A Replacement	Sewer
Joint Outfall H - Unit 1B	Sewer
Joint Outfall H - Unit 1B Replacement	Sewer
Joint Outfall H - Unit 1C	Sewer
Joint Outfall H - Unit 1D	Sewer
Joint Outfall H - Unit 1D Replacement	Sewer
Joint Outfall H - Unit 1E	Sewer
Joint Outfall H - Unit 1F	Sewer
Joint Outfall H - Unit 1G	Sewer
Joint Outfall H - Unit 2A	Sewer
Joint Outfall H - Unit 2A Replacement	Sewer
Joint Outfall H - Unit 2B	Sewer
Joint Outfall H - Unit 2C	Sewer
Joint Outfall H - Unit 2D	Sewer
Joint Outfall H - Unit 2F	Sewer
Joint Outfall H - Unit 2G	Sewer
Joint Outfall H - Unit 2H	Sewer
Joint Outfall H - Unit 2H Relief	Sewer
Joint Outfall H - Unit 3	Sewer
Joint Outfall H - Unit 3 Replacement	Sewer
Joint Outfall H - Unit 4	Sewer
Joint Outfall H - Unit 4 Relief	Sewer
Joint Outfall H - Unit 5A	Sewer
Joint Outfall H - Unit 5A Relief	Sewer
Joint Outfall H - Unit 5B	Sewer
Joint Outfall H - Unit 5B Relief	Sewer
Joint Outfall H - Unit 5C	Sewer
Joint Outfall H - Unit 5D	Sewer
Joint Outfall H - Unit 5D Relief	Sewer
Joint Outfall H - Unit 6	Sewer

Facility Name	Facility Type
Joint Outfall H - Unit 6 Relief	Sewer
Joint Outfall H - Unit 7A	Sewer
Joint Outfall H - Unit 7A Relief	Sewer
Joint Outfall H - Unit 7B	Sewer
Joint Outfall H - Unit 7B Relief	Sewer
Joint Outfall H - Unit 7C	Sewer
Joint Outfall H - Unit 7C Relief	Sewer
Joint Outfall H - Unit 8A	Sewer
Joint Outfall H - Unit 8A Relief	Sewer
Joint Outfall H - Unit 8B	Sewer
Joint Outfall H - Unit 8C	Sewer
Joint Outfall H - Unit 8D	Sewer
Joint Outfall H - Unit 8E	Sewer
Joint Outfall H - Unit 8F	Sewer
Joint Outfall H - Unit 8G	Sewer
Joint Outfall H - Unit 8H	Sewer
Joint Outfall H - Unit 8J	Sewer
Joint Outfall H - Unit 8K	Sewer
Joint Outfall H - Unit 8K Relief	Sewer
Joint Outfall H - Unit 8L	Sewer
Joint Outfall H - Unit 8L Relief	Sewer
Joint Outfall H - Unit 8M	Sewer
Joint Outfall H - Unit 8M Relief	Sewer
Joint Outfall H - Unit 8N	Sewer
Joint Outfall H - Unit 8N Relief	Sewer
Joint Outfall H - Unit 9A	Sewer
Joint Outfall H - Unit 9B	Sewer
Joint Outfall H - Unit 9C	Sewer
Joint Outfall H - Units 6 And 8A Connection	Sewer
Joint Outfall J - Unit 1A	Sewer
Joint Outfall J - Unit 1A Relief	Sewer
Joint Outfall J - Unit 1A Replacement	Sewer
Joint Outfall J - Unit 1B	Sewer
Joint Outfall J - Unit 1C	Sewer
Joint Outfall J - Unit 1D	Sewer
Joint Outfall J - Unit 1E	Sewer
Joint Outfall J - Unit 1F	Sewer
Joint Outfall J - Unit 1G	Sewer
Joint Outfall J - Unit 2A	Sewer
Joint Outfall J - Unit 2B	Sewer

Facility Name	Facility Type
Joint Outfall J - Unit 2C	Sewer
Joint Outfall J - Unit 2D	Sewer
Joint Outfall J - Unit 2E	Sewer
Joint Outfall J - Unit 2E Replacement	Sewer
Joint Outfall J - Unit 2F	Sewer
Joint Outfall J - Unit 3	Sewer
Joint Outfall J - Unit 4	Sewer
Joint Outfall J - Unit 5A	Sewer
Joint Outfall J - Unit 5A Relief	Sewer
Joint Outfall J - Unit 5B	Sewer
Joint Outfall J - Unit 5B Force Main #2	Sewer
Joint Outfall J - Unit 5B Force Main #2 (Gravity Section)	Sewer
Joint Outfall J - Unit 5C	Sewer
Joint Outfall J - Unit 5C Relief	Sewer
Keystone Trunk	Sewer
La Habra Heights Trunk, Section 1	Sewer
La Habra Heights Trunk, Section 2A	Sewer
La Habra Heights Trunk, Section 2B	Sewer
La Habra Heights Trunk, Section 3	Sewer
La Habra Heights Trunk, Section 4	Sewer
La Habra Heights Trunk, Section 5	Sewer
La Mirada Relief Trunk	Sewer
La Mirada Trunk, Section 3	Sewer
La Mirada Trunk, Sections 1&2	Sewer
La Salle Avenue Pumping Plant Connection Trunk	Sewer
La Salle Avenue Pumping Plant Emergency Bypass	Sewer
La Salle Avenue Pumping Plant Force Main	Sewer
La Salle Avenue Pumping Plant Influent Sewer	Sewer
La Verne Trunk, Section 1	Sewer
La Verne Trunk, Section 2	Sewer
La Verne Trunk, Section 3	Sewer
La Verne-"B" Street Trunk	Sewer
Lakewood Trunk	Sewer
Lamanda Park Replacement Trunk	Sewer
Lamanda Park Trunk	Sewer
Lark Ellen Trunk, Section 1	Sewer
Lark Ellen Trunk, Section 5A	Sewer
Lark Ellen Trunk, Sections 2&3	Sewer
Lark Ellen Trunk, Sections 4,5,&6	Sewer
Laurel Avenue Trunk	Sewer

Facility Name	Facility Type
Lemon Avenue Trunk	Sewer
Lincoln Avenue Trunk	Sewer
Loch Lomond Drive Trunk	Sewer
Lomita Trunk	Sewer
Lomita Trunk Extension	Sewer
Lomita Trunk Extension Relief	Sewer
Lomita Trunk Relocation	Sewer
Lone Hill Avenue Trunk	Sewer
Long Point Pumping Plant Emergency Bypass	Sewer
Long Point Pumping Plant Force Main	Sewer
Long Point Pumping Plant Influent Sewer	Sewer
Lorraine Trunk	Sewer
Los Coyotes Diagonal Relief Trunk	Sewer
Los Coyotes Diagonal Trunk	Sewer
Lower Azusa Road Trunk	Sewer
Lower Springs Road Trunk Replacement	Sewer
Lunada Bay Pumping Plant Emergency Bypass	Sewer
Lunada Bay Pumping Plant Force Main #1	Sewer
Lunada Bay Pumping Plant Force Main #2	Sewer
Lunada Bay Pumping Plant Force Main #3	Sewer
Lunada Bay Pumping Plant Influent Sewer	Sewer
Madison Street Trunk	Sewer
Madison Street Trunk Replacement	Sewer
Main Street Extension Trunk	Sewer
Main Street Pumping Plant Emergency Bypass	Sewer
Main Street Pumping Plant Force Main #2	Sewer
Main Street Pumping Plant Force Main #3	Sewer
Main Street Pumping Plant Force Main #4	Sewer
Main Street Pumping Plant Influent Sewer	Sewer
Main Street Relief Trunk	Sewer
Main Street Trunk	Sewer
Malaga Cove Pumping Plant #1 Emergency Bypass	Sewer
Malaga Cove Pumping Plant #1 Force Main	Sewer
Malaga Cove Pumping Plant #1 Force Main #2	Sewer
Malaga Cove Pumping Plant #1 Influent Sewer	Sewer
Malaga Cove Pumping Plant #2 Emergency Bypass	Sewer
Malaga Cove Pumping Plant #2 Force Main	Sewer
Malaga Cove Pumping Plant #2 Influent Sewer	Sewer
Malaga Cove Trunk	Sewer
Manchester Avenue Pump Relief Trunk	Sewer

Facility Name	Facility Type
Manchester Avenue Pump Trunk	Sewer
Manchester-Vermont Diversion Extension Trunk	Sewer
Manchester-Vermont Relief Trunk	Sewer
Maricopa Street Trunk	Sewer
Marina Pumping Plant #1 Emergency Bypass	Sewer
Marina Pumping Plant #1 Force Main	Sewer
Marina Pumping Plant #1 Force Main #2	Sewer
Marina Pumping Plant #1 Force Main Replacement	Sewer
Marina Pumping Plant #2 Emergency Bypass	Sewer
Marina Pumping Plant #2 Force Main #1	Sewer
Marina Pumping Plant #2 Force Main #2	Sewer
Marina Pumping Plant #3 Emergency Bypass	Sewer
Marina Pumping Plant #3 Force Main	Sewer
Marina Pumping Plant #3 Force Main #2	Sewer
Marina Pumping Plant #3 Force Main (Gravity Section)	Sewer
Marina Pumping Plant #3 Force Main Replacement	Sewer
Marina Pumping Plant #3 Influent Sewer	Sewer
Marina Relief Trunk, Section 1B	Sewer
Marina Relief Trunk, Section 2	Sewer
Marina Relief Trunk, Section 3	Sewer
Marina Relief Trunk, Section 4	Sewer
Marina Trunk, Section 1A	Sewer
Marina Trunk, Section 1B	Sewer
Marina Trunk, Section 2	Sewer
Marina Trunk, Section 3	Sewer
Marina Trunk, Section 4	Sewer
Market Street Trunk	Sewer
Marquardt Avenue Trunk	Sewer
Merced Trunk, Section 1	Sewer
Merced Trunk, Section 2	Sewer
Mills Avenue Trunk	Sewer
Moneta Extension Trunk, Section 1	Sewer
Moneta Extension Trunk, Section 1 Relief	Sewer
Moneta Extension Trunk, Section 2	Sewer
Moneta Trunk	Sewer
Monrovia Outfall Trunk	Sewer
Montebello City Relief Trunk	Sewer
Montebello City Trunk	Sewer
Montebello Diversion Trunk	Sewer
Montebello Interceptor Trunk, Section 3	Sewer

Facility Name	Facility Type
Montebello Interceptor Trunk, Sections 1&2	Sewer
Montebello Relief Trunk, Section 3	Sewer
Montebello Relief Trunk, Sections 1&2	Sewer
Montebello Trunk	Sewer
Montebello-Randolph Trunk	Sewer
Monterey Hills Trunk	Sewer
Monterey Hills-Alhambra Road Connection Trunk	Sewer
Monterey Park Diversion Trunk	Sewer
Monterey Park Extension Relief Trunk	Sewer
Monterey Park Extension Trunk	Sewer
Monterey Park Relief Trunk	Sewer
Mount San Antonio Trunk	Sewer
Mountain View-Belle Vernon Relief Extension Trunk	Sewer
Mountain View-Belle Vernon Trunk	Sewer
Nadeau Trunk, Section 3	Sewer
Nadeau Trunk, Section 4	Sewer
Nadeau Trunk, Sections 1&2	Sewer
Narbonne Avenue Connection Trunk	Sewer
Narbonne Avenue Trunk, Section 1(East)	Sewer
Narbonne Avenue Trunk, Section 1(West)	Sewer
Narbonne Avenue Trunk, Section 2	Sewer
Narbonne Avenue Trunk, Section 3	Sewer
Newman Avenue Connection Trunk	Sewer
Nogales Street Trunk	Sewer
North Long Beach Relief Trunk	Sewer
North Long Beach Trunk	Sewer
North Norwalk Trunk	Sewer
North Plant Outfall Relief Trunk	Sewer
North Plant Outfall Trunk	Sewer
North Plant Outfall Trunk Walnut Way Connection	Sewer
North Slope Connection Trunk	Sewer
North Torrance Extension Trunk	Sewer
North Torrance Trunk	Sewer
Norwalk Boulevard Trunk	Sewer
Norwalk Extension Trunk	Sewer
Norwalk-Santa Fe Springs Trunk	Sewer
Oak Street-Center Avenue Relief Trunk	Sewer
Oak Street-Center Avenue Relocation Trunk	Sewer
Oak Street-Center Avenue Trunk	Sewer
Old River School Road Relief Trunk, Section 1	Sewer

Facility Name	Facility Type
Old River School Road Relief Trunk, Section 5	Sewer
Old River School Road Relief Trunk, Sections 2&3	Sewer
Old River School Road Trunk, Section 3	Sewer
Old River School Road Trunk, Sections 1&2	Sewer
Orr And Day Road Trunk	Sewer
Palo Verde Trunk	Sewer
Palos Verdes North Slope Relief Trunk, Section 1	Sewer
Palos Verdes North Slope Relief Trunk, Section 1 Replacement	Sewer
Palos Verdes North Slope Replacement Trunk, Section 1A	Sewer
Palos Verdes North Slope Trunk, Section 1	Sewer
Palos Verdes North Slope Trunk, Section 2 Replacement	Sewer
Palos Verdes North Slope Trunk, Section 3 Replacement	Sewer
Palos Verdes North Slope Trunk, Sections 2&3	Sewer
Palos Verdes-Torrance Connection Trunk	Sewer
Parshall Flume At Marmion Way	Sewer
Pasadena East-West Interceptor Trunk	Sewer
Peck Road Pumping Plant Force Main	Sewer
Peck Road Pumping Plant Influent Sewer	Sewer
Peck Road Trunk	Sewer
Phillips Boulevard Relief Trunk	Sewer
Phillips Boulevard Trunk	Sewer
Phoebe Avenue Trunk	Sewer
Pico Avenue Trunk	Sewer
Pico Rivera Trunk	Sewer
Plaza Relief Trunk	Sewer
Plaza Trunk	Sewer
Polymer Plant Waste Water Disposal Line	Sewer
Pomona #4 Pumping Plant Force Main #1	Sewer
Pomona #4 Pumping Plant Force Main #2	Sewer
Pomona Boulevard Interceptor Trunk	Sewer
Pomona WRP Flow	Sewer
Pomona WRP Influent Sewer #1	Sewer
Pomona WRP Influent Sewer #2	Sewer
Potrero Avenue Trunk	Sewer
Prairie Avenue Trunk	Sewer
Puddingstone Trunk, Section 3	Sewer
Puddingstone Trunk, Section 4	Sewer
Puddingstone Trunk, Sections 1&2	Sewer
Puente Hills Landfill Facilities Sewer	Sewer
Puente Relief Trunk	Sewer

Facility Name	Facility Type
Puente Trunk	Sewer
Puente Trunk Connection To Joint Outfall H - Unit 7B	Sewer
Pump District #5 Connection Trunk	Sewer
Pump Districts #5 7&9 Connection Trunk	Sewer
Railroad Street Trunk	Sewer
Ramona Avenue Connection Trunk	Sewer
Ramona Avenue Trunk	Sewer
Randolph Street Trunk	Sewer
Raymond Avenue Trunk	Sewer
Redondo Beach Boulevard Extension Trunk	Sewer
River Avenue Trunk	Sewer
Rocha Street Trunk	Sewer
Rocket Street Pumping Plant Force Main	Sewer
Rosecrans Avenue Relief Trunk	Sewer
Rosecrans Avenue Trunk	Sewer
Rush Street Trunk	Sewer
Ruther Avenue Pumping Plant Force Main	Sewer
San Antonio Relief Trunk	Sewer
San Antonio Trunk	Sewer
San Dimas Connection Extension Trunk	Sewer
San Jose Creek Trunk	Sewer
San Marino Outfall Trunk	Sewer
Santa Anita Connection Trunk	Sewer
Santa Anita Outfall Trunk	Sewer
Santa Anita Outfall Trunk	Sewer
Santa Fe Avenue Trunk	Sewer
Santa Fe Springs Waste Water Line	Sewer
Santa Fe Street Relief Trunk	Sewer
Santa Fe Street Trunk	Sewer
Scott Avenue Relief Trunk	Sewer
Scott Avenue Trunk	Sewer
Sea Cove Pumping Plant Emergency Bypass	Sewer
Sea Cove Pumping Plant Force Main	Sewer
Sea Cove Pumping Plant Influent Sewer	Sewer
Sepulveda Boulevard Trunk	Sewer
Sepulveda-Figueroa Street Connecting Trunk	Sewer
Shoemaker Avenue Trunk	Sewer
Signal Hill Interceptor Relief Trunk	Sewer
Signal Hill Outfall Trunk	Sewer
SJCWRP Plant Outfalls	Sewer

Facility Name	Facility Type
Slack Road Trunk	Sewer
Sorensen Avenue Relief Trunk	Sewer
Sorensen Avenue Trunk	Sewer
South Bay Cities Main Extension #3 Relief Trunk	Sewer
South Bay Cities Main Pumping Plant Force Main	Sewer
South Bay Cities Main Pumping Plant Force Main #2	Sewer
South Bay Cities Main Pumping Plant Force Main #3	Sewer
South Bay Cities Main Pumping Plant Force Main (Gravity Section)	Sewer
South Bay Cities Main Pumping Plant Influent Sewer	Sewer
South Bay Cities Main Trunk	Sewer
South El Monte Trunk	Sewer
South Hawthorne-Warfield Avenue Extension Relief Trunk, Sections 4A&4C	Sewer
South Hawthorne-Warfield Avenue Extension Relief Trunk, Sections 4B&4D	Sewer
South Hawthorne-Warfield Avenue Extension Trunk, Section 4	Sewer
South Inglewood-Orange Avenue Trunk	Sewer
South Inglewood-Orange Avenue Trunk, Extension #1	Sewer
South Inglewood-Orange Avenue Trunk, Extension #2	Sewer
South Inglewood-Orange Avenue Trunk, Extension #3	Sewer
South Park Avenue Trunk	Sewer
South Plant Outfall Trunk	Sewer
South Torrance Trunk	Sewer
South Whittier Outfall & South Whittier Outfall Relief Relocation	Sewer
South Whittier Outfall Relief Trunk, Sections 1,2A,2B,2C,&3	Sewer
South Whittier Outfall Relief Trunk, Sections 2E&2F	Sewer
South Whittier Outfall Trunk, Section 5	Sewer
South Whittier Outfall Trunk, Section 6	Sewer
South Whittier Outfall Trunk, Sections 1,2,3,&4	Sewer
Stage Road Junction Trunk	Sewer
Stanford Avenue Trunk	Sewer
State Street Trunk	Sewer
Strawberry Avenue Relief Trunk	Sewer
Strawberry Avenue Trunk	Sewer
Studebaker Road Trunk	Sewer
Sunflower Trunk	Sewer
Sunset Avenue Trunk	Sewer
Swim Park Trunk	Sewer
Telegraph Road Trunk	Sewer
Torrance Extension Trunk	Sewer
Tract #5445 Relief Trunk	Sewer
Tract #5445 Trunk	Sewer

Facility Name	Facility Type
Tri-Cities Outfall Relief Trunk	Sewer
Tri-Cities Outfall Trunk	Sewer
Turnbull Canyon Trunk	Sewer
Tyler Avenue Relief Trunk	Sewer
Tyler Avenue Trunk	Sewer
Union Pacific Trunk	Sewer
Union Street Trunk	Sewer
Valinda Trunk	Sewer
Valley View Trunk	Sewer
Vermont Avenue Extension Trunk	Sewer
Vernon Extension Relief Trunk	Sewer
Vernon Extension Trunk	Sewer
Vernon Extension Trunk Connection at Newell Street	Sewer
Vesta Street Pumping Plant Emergency Bypass	Sewer
Vesta Street Pumping Plant Emergency Bypass #2	Sewer
Vesta Street Pumping Plant Force Main	Sewer
Vesta Street Pumping Plant Influent Sewer	Sewer
Via Campesina Trunk	Sewer
Victoria Street Relief Trunk	Sewer
Victoria Street Trunk	Sewer
Wadsworth Avenue-Long Street Trunk	Sewer
Wadsworth Avenue-Long Street Trunk Replacement	Sewer
Walnut Creek Trunk, Section 3	Sewer
Walnut Creek Trunk, Sections 1&2	Sewer
Walnut Way Trunk	Sewer
Washington Boulevard Trunk	Sewer
Water Street Trunk	Sewer
West Artesia Trunk	Sewer
West Torrance Trunk	Sewer
Western Avenue Trunk	Sewer
Whittier Narrows WRP Flow	Sewer
Wilcox Avenue Relief Trunk	Sewer
Wilcox Avenue Trunk	Sewer
Wilcox Avenue Trunk, Extension #1	Sewer
Wilder Avenue Pumping Plant Force Main	Sewer
Wilmington Avenue Trunk	Sewer
Woodruff Avenue Trunk	Sewer
Worsham Creek Relief Trunk	Sewer
Worsham Creek Replacement Trunk	Sewer
Worsham Creek Trunk	Sewer

Facility Name	Facility Type
Wright Road Trunk	Sewer
Abalone Cove Pumping Plant	Pumping Plant
Allington Street Pumping Plant	Pumping Plant
Beach Avenue Pumping Plant	Pumping Plant
Bloomfield Pumping Plant	Pumping Plant
Bluff Cove Pumping Plant	Pumping Plant
Central Gardens Pumping Plant	Pumping Plant
Clifton Pumping Plant	Pumping Plant
Coyote Creek Pumping Plant	Pumping Plant
Davidson City Pumping Plant	Pumping Plant
Diamond Street Pumping Plant	Pumping Plant
Douglas Cut Pumping Plant	Pumping Plant
Fawcett Avenue Pumping Plant	Pumping Plant
Gardena Pumping Plant	Pumping Plant
Gertruda Avenue Pumping Plant	Pumping Plant
Green Lane Pumping Plant	Pumping Plant
Herondo Pumping Plant	Pumping Plant
Hollywood Riviera Pumping Plant	Pumping Plant
Indiana Street Pumping Plant	Pumping Plant
La Salle Avenue Pumping Plant	Pumping Plant
Lomita Pumping Plant (Lomita Pump Station)-JWPCP	Pumping Plant
Long Beach Interceptor Pumping Plant	Pumping Plant
Long Beach Main Pumping Plant	Pumping Plant
Long Point Pumping Plant	Pumping Plant
Lunada Bay Pumping Plant	Pumping Plant
Main Street Pumping Plant	Pumping Plant
Malaga Cove # 1 Pumping Plant	Pumping Plant
Malaga Cove # 2 Pumping Plant	Pumping Plant
Marina # 1 Pumping Plant	Pumping Plant
Marina # 2 Pumping Plant	Pumping Plant
Marina # 3 Pumping Plant	Pumping Plant
Peck Road Pumping Plant	Pumping Plant
Pomona # 1 Pumping Plant	Pumping Plant
Pomona # 2 Pumping Plant	Pumping Plant
Pomona # 3 Pumping Plant	Pumping Plant
Pomona # 4 Pumping Plant	Pumping Plant
Rocket Street Pumping Plant	Pumping Plant
Ruther Ave Pumping Plant	Pumping Plant
Sea Cove Pumping Plant	Pumping Plant
Shoemaker Pumping Plant	Pumping Plant

Facility Name	Facility Type
South Bay Cities Main Pumping Plant	Pumping Plant
Spring Street Pumping Plant	Pumping Plant
Vesta Street Pumping Plant	Pumping Plant
Western Avenue Pumping Plant	Pumping Plant
Whites Point Pumping Plant	Pumping Plant
Wilder Avenue Pumping Plant	Pumping Plant
Joint Water Pollution Control Plant	Treatment Plant
La Canada Water Reclamation Plant	Treatment Plant
Long Beach Water Reclamation Plant	Treatment Plant
Los Coyotes Water Reclamation Plant	Treatment Plant
Pomona Water Reclamation Plant	Treatment Plant
San Jose Creek Water Reclamation Plant	Treatment Plant
Whittier Narrows Water Reclamation Plant	Treatment Plant

Exhibit D

Sewage Unit Determination and Calculation

The Chief Engineer's periodic determination of a sewage unit shall be made on the basis of such sampling and testing procedures as he determines shall fairly measure the average daily amount of discharge measured in terms of flow, chemical oxygen demand, and suspended solids from a typical single family home (sfh).

The determination of the number of sewage units from any wastewater discharger shall be calculated by the following formula:

$$SU = A \left(\frac{FLOW_{avg}}{FLOW_{sfh}} \right) + B \left(\frac{COD_{avg}}{COD_{sfh}} \right) + C \left(\frac{SS_{avg}}{SS_{sfh}} \right)$$

Where:

1. $Flow_{avg}$, COD_{avg} , and SS_{avg} are the average quantities of flow, chemical oxygen demand, and suspended solids, respectively, attributed to a wastewater discharger. Flow is expressed in gallons per day, chemical oxygen demand is expressed in pounds per day, and suspended solids are expressed in pounds per day.
2. $Flow_{sfh}$, COD_{sfh} , and SS_{sfh} are the quantities of flow, chemical oxygen demand, and suspended solids, respectively, attributed to the typical single family home. Flow is expressed in gallons per day, chemical oxygen demand is expressed in pounds per day, and suspended solids are expressed in pounds per day.
3. A, B, and C are weighted distribution factors that express the proportion of the total operation and maintenance and capital costs required for conveyance, treatment, and disposal of wastewater for the fiscal year which are attributable to flow, chemical oxygen demand, and suspended solids, respectively. The sum of A, B, and C totals 100 percent.

The Chief Engineer shall make periodic determinations of the $Flow_{avg}$, COD_{avg} , and SS_{avg} from wastewater dischargers to the Districts' sewerage system. The Chief Engineer shall establish the basis of such sampling and testing procedures as he determines shall fairly measure said parameters.