



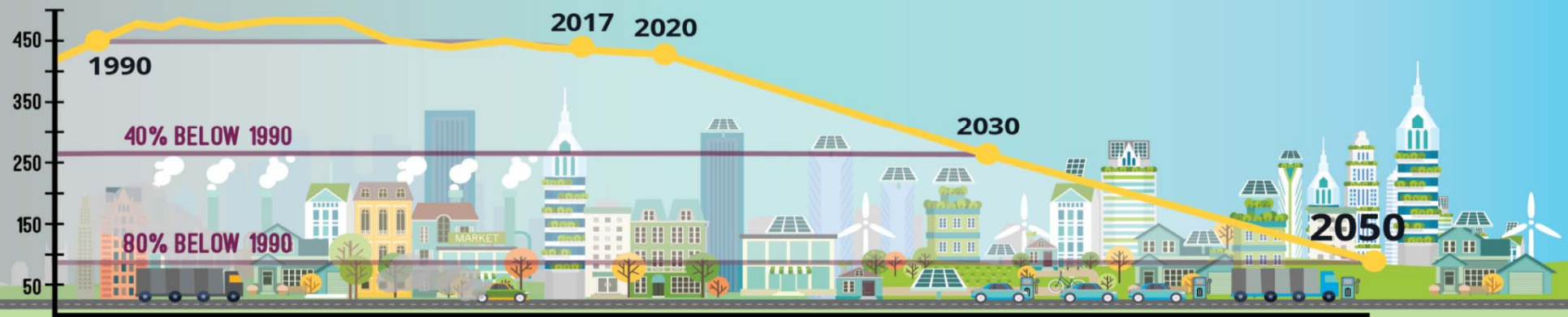
# Energy Solutions for Your Business

Energy for What's Ahead<sup>SM</sup>



# The Clean Power and Electrification Pathway Realizing California's Environmental Goals

Million Metric  
Tons of CO<sub>2</sub>



The Clean Power and Electrification Pathway is an integrated approach to reduce GHG emissions and air pollution by taking action in three California economic sectors: electricity, transportation and buildings.

For More Information [sce.com/TE](https://www.sce.com/TE)

Energy for What's Ahead<sup>SM</sup>

# Leading the Way in Transportation Electrification



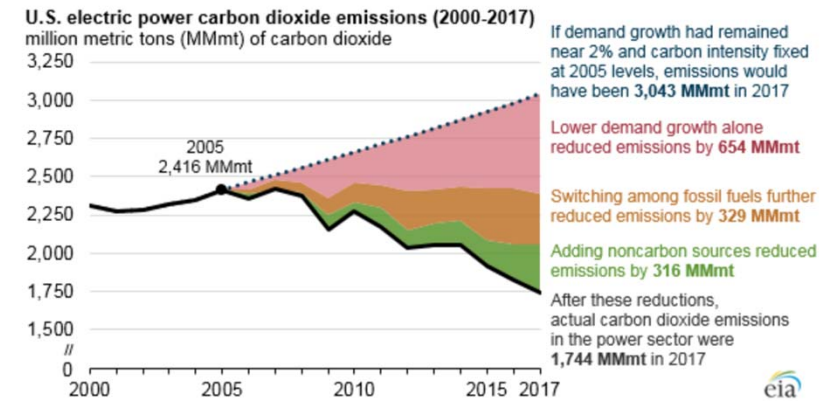
Energy for What's Ahead<sup>SM</sup>



# Electric Vehicles Benefit

- **Policy Changes**
  - Statewide commitment to decarbonizing transportation sector
  - Air quality, particularly for DACs
  - Urban low-emissions zones & internal combustion engine bans

Carbon dioxide emissions from the U.S. power sector have declined 28% since 2005



**California Gov. Jerry Brown casually unveils history's most ambitious climate target**

Full carbon neutrality is now on the table for the world's fifth largest economy.

**Nine countries say they'll ban internal combustion engines.**

**California Commits to Zero-Emissions Bus Fleet by 2040**

A regulatory push adds momentum to improving economics for electric school buses and transit vehicles.

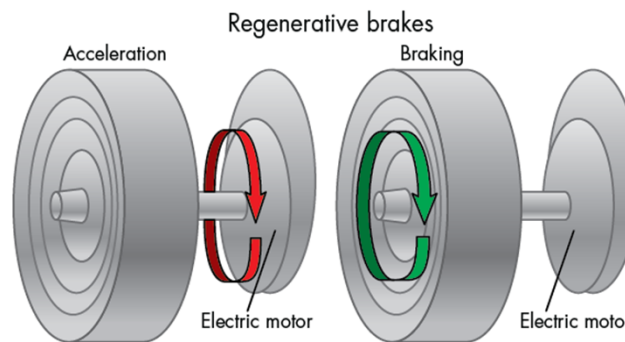
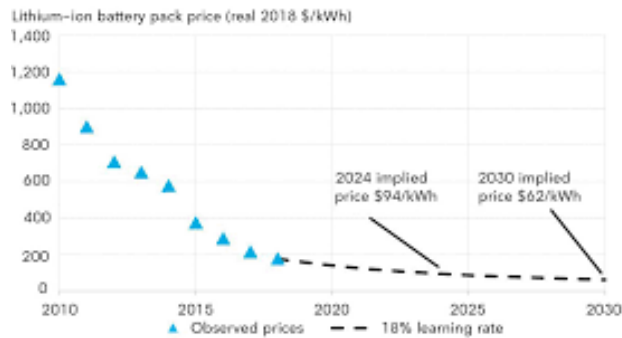


# Electric Vehicles Benefit

- Lower Cost of Ownership
  - Lower cost per mile
  - Better fuel economy in urban, stop-and-go settings
  - Lower maintenance costs
  - Higher availability
  - Fall in battery costs will drive purchase price lower



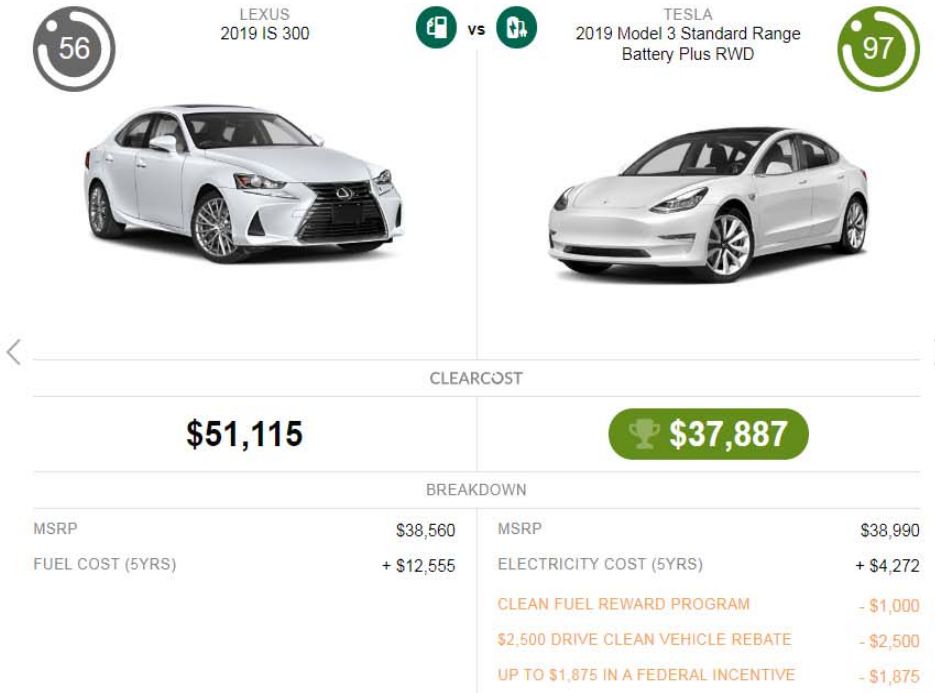
Lithium-ion battery price outlook



Source: Machine Design

## How much can you save with your next car?

Easily compare your favorite car models based on fuel efficiency, available incentives and total cost of ownership.



# Electric Vehicles Benefit

- Performance
  - Instant torque
  - Noise reduction
- Driver Attraction & Retention?

NATIONAL

## Facing A Critical Shortage Of Drivers, The Trucking Industry Is Changing

February 11, 2019 · 5:01 AM ET  
Heard on [Morning Edition](#)

### **THREE-QUARTERS OF MILLENNIALS WOULD TAKE A PAY CUT TO WORK FOR A SOCIALLY RESPONSIBLE COMPANY, ACCORDING TO RESEARCH FROM CONE COMMUNICATIONS**

**88% say their job is more fulfilling when employers provide opportunities to make a positive impact**

BOSTON (November 2, 2016) – Three-quarters (76%) of Millennials consider a company's social and environmental commitments when deciding where to work and nearly two-thirds (64%) won't take a job if a potential employer doesn't have strong corporate social responsibility (CSR) practices, according to the [2016 Cone Communications Millennial Employee Engagement Study](#). The study reveals that meaningful engagement around CSR is a business – and

Source: Machine Design



# Transportation Electrification Programs

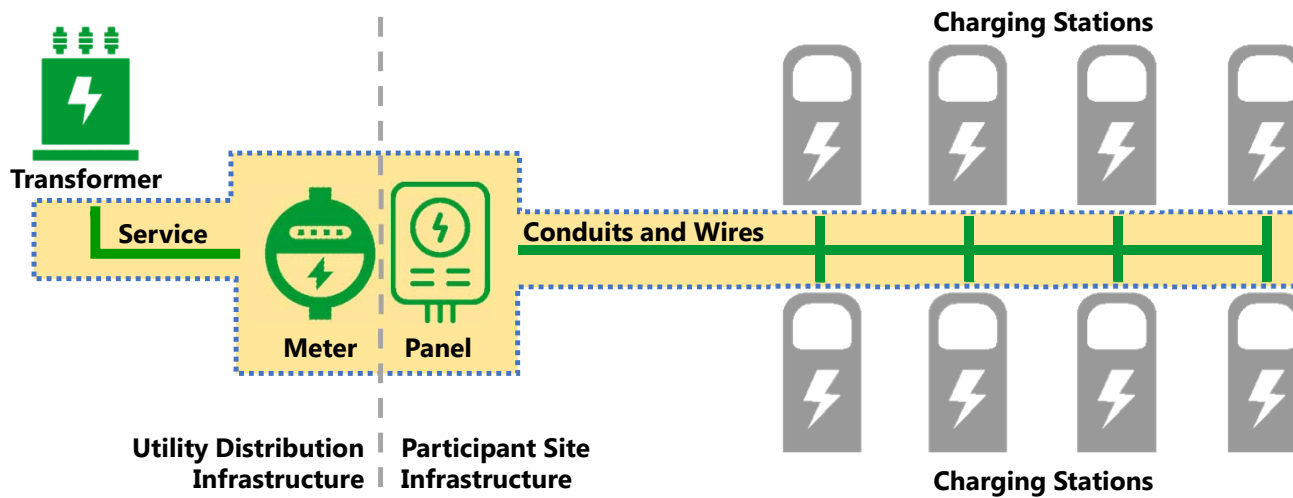
## Charge Ready Programs:

- Bridge Funding
- Phase 2
- Medium, Heavy Duty Transport
- DC Fast Charge





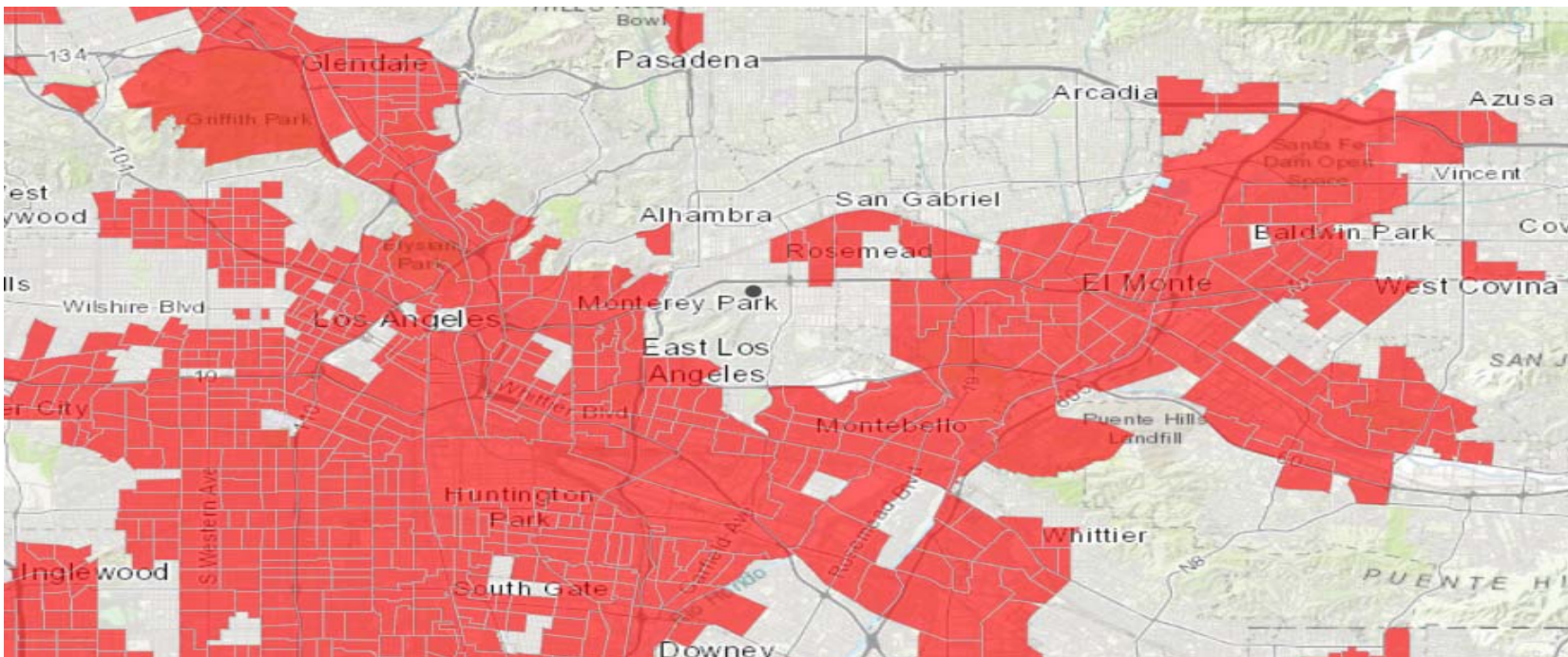
# Charge Ready Rebate Program



Program covers costs associated with service drop, meter, panel, and circuit dedicated to EV charging. Make-ready ends at interconnection point with customer charging equipment providing AC service.

# Disadvantaged Communities – Cal Enviro Screen 3.0

State guidelines – economic, health, environment



# Four Types of Businesses for Rebate

- Workplaces
- Multi-unit dwellings
- Destination centers (e.g., a shopping mall or complex of stores)
- Fleet operators (such as car rental, public bus, and truck delivery companies)





# Rebate Program

## Not In Disadvantaged Communities:

- 25% rebate for workplaces, fleet operators, destination centers
- 50% rebate for MUDs

## In Disadvantaged Communities:

100% rebate for all business types

Installation for charging station and electric infrastructure costs are covered by the program



# Residential EV programs



[evrebates.sce.com](http://evrebates.sce.com)

## Clean Fuel Rewards Program

- \$1000 Rebate

## Charge Ready Home Installation Rebate - **EXPIRED**

- Up to \$1500 Rebate

# Charge Ready Transport supports medium and heavy-duty electric vehicles



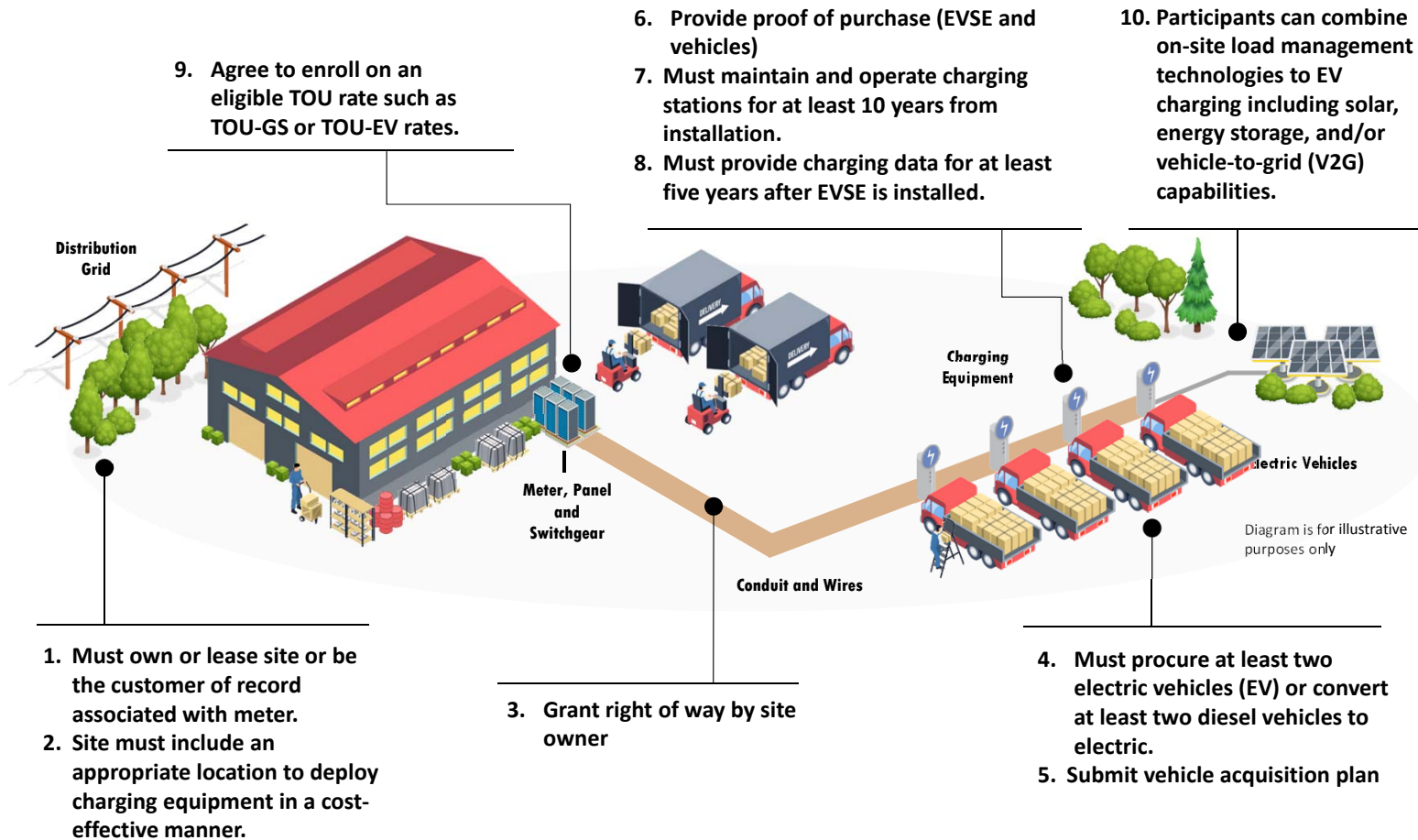
# Charge Ready Transport provides infrastructure for fleet electrification



- Approved total program budget of **\$356.4M**
- Achieve minimum **870 sites** with **8,490 electric vehicles** procured or converted
- **Covers cost of all infrastructure** needed up to charging station
- **Charging station rebates** available for **transit/school buses** and **sites in disadvantaged communities**



# Customer Eligibility and Obligation





# Customer Eligibility and Obligation

1. Must own or lease site or be the customer of record associated with meter.
2. Site must include an appropriate location to deploy charging equipment in a cost-effective manner.
3. Grant right of way by site owner
4. Must procure at least two electric vehicles (EV) or convert at least two diesel vehicles to electric.
5. Submit vehicle acquisition plan
6. Provide proof of purchase (EVSE and vehicles)
7. Must provide charging data for at least five years after EVSE is installed.
8. Must maintain and operate charging stations for at least 10 years from installation.
9. Agree to enroll on an eligible TOU rate such as TOU-GS or TOU-EV rates.

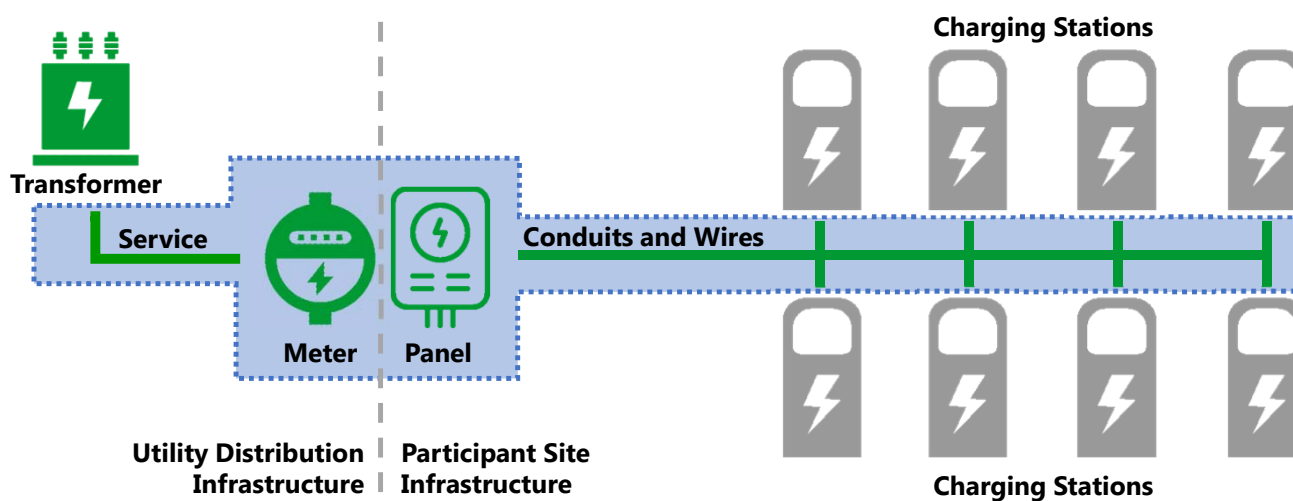
# Charge Ready Transport Program Eligibility


- Non-residential SCE Program Applicants are required to own, lease, manage, or be the customer on record for the charging site where the equipment will be installed.
- At least two qualifying fleet EV's must be procured or converted in order to participate in the program.
  - Although there is a 2 vehicle minimum, the budget only supports an average of about 10 vehicles per site.
- At least 2 EV's must be delivered on-site within 18 months.
- All vehicle charging equipment must be selected, purchased, and installed by the participant.



# SCE installs “make-ready” electrical infrastructure

- Standalone charging station model



 Program covers costs associated with service drop, meter, panel, and circuit dedicated to EV charging. Make-ready ends at interconnection point with customer charging equipment providing AC service.

# Stay in touch with SCE

Visit our Charge Ready Transport Landing page:  
[www.SCE.com/CRT](http://www.SCE.com/CRT)



Enrollment is now open for Charge Ready Transport, a program designed to help you install the charging infrastructure needed to electrify your medium- and heavy-duty fleets.

Charge Ready Transport provides funding for installation of infrastructure for a minimum of **870 SCE commercial customer sites** over a five-year program. The sites are expected to support **at least 8,490 medium- and heavy-duty fleet vehicles**.

This program provides a great opportunity for fleet owners and other operators of industrial vehicles, including:

- Medium- and heavy-duty trucks and vans
- Transit buses
- School buses
- Transport refrigeration units
- Airport ground support equipment
- Port equipment
- Forklifts and other equipment





## Solar- What to do?



Imagine a world where the energy that powers our lives and propels us forward is provided by the Earth's clean resources.

**THIS IS OUR CLEAN ENERGY FUTURE.**

# Is My Property a Good Place for Solar?

- **Things to Ask:**

- **Is my site free from shading?**
  - Your property should have clear, unobstructed access to the sun for most of the day, and throughout the year
- **Do I have enough space to fit the panels?**
  - You need 100 sq. ft. for every 1 kW installed; 1 MW system might take up to 4 acres of land
- **Do I have a good roof?**
  - If a rooftop cannot be used, a PV array can also be placed on the ground
- **Will I be able to have my panels face S/SW?**
  - The best orientation for a PV system is on a south-facing roof; however, roofs that face east or west may also be acceptable
- **Do I want to buy, lease or enter a Power Purchase Agreement?**
  - Depending on your financial situation, one option may be better for you. In most cases though, buying offers the customer the most cost savings.



# Self-Generation Incentive Program (SGIP) Coming soon a LARGE rebate for Battery Storage

SGIP offers rebates to residential, commercial, industrial, government and non-profit customers who install qualifying types of distributed generation to meet all or a portion of their own energy needs. Includes such technologies as **energy storage**, wind, etc. Learn more at [sce.com/sgip](http://sce.com/sgip).

- **Getting Started**

For most homes and businesses, the SGIP application is a two/three-step process:

- **Reserve an SGIP Incentive**

To start the application process and reserve your SGIP rebate, you must complete the application online at [www.selfgenca.com](http://www.selfgenca.com). Your reservation request will be reviewed by an SGIP Program Administrator and you'll receive a Conditional Reservation Letter once all forms are received and approved.



## Medical Baseline

- If you, or someone who shares your home full-time, require certain medical equipment for life support or to treat specific illnesses, Southern California Edison's **Medical Baseline Program** can provide an additional baseline energy allowance
- During outages, customers who are enrolled in our Medical Baseline Program, receive alerts and notifications regarding the outage through their preferred method of contact (phone, text, SMS, or email) **1-800-447-6620 for more info**



# Summer Discount Plan previously the Air Conditioning Cycling program



- Save up to \$160- per year
- No cost to enroll
- Manage your own preferences
- Device on the AC unit
- Program from June 1 to October 1



# Residential and Multifamily Info



# Electric Heat Pump Water Heaters \$500 REBATE

## Homes, Townhomes, Condos, Apartments



### Electric Heat Pump Water Heaters

#### Requirements:

- Only residential-style electric Heat Pump Water Heaters (HPWHs) are eligible  
“Instantaneous” and “tank less” water heaters do not qualify
- Must have a nominal storage capacity of 50 gallons or greater
- Must have a Uniform Energy Factor (UEF) of 3.09 or greater to be eligible for incentive
- Must have existing electric resistance water heater(s) to be eligible for incentive
- Make and model number must be included with copy of proof of purchase

## Residential or Multifamily Rebate Variable Speed Pool Pumps



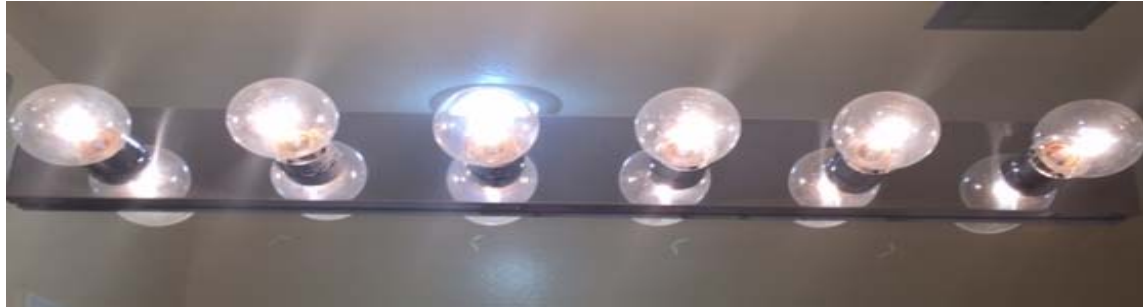
Boost Your Bottom Line with a **\$200 discount** for a Variable-Speed Pool Pump  
Your old fixed-speed pool pump might be a hidden drain on your property's operating budget. A new variable-speed pump can help you:

- Experience energy savings of up to 45% vs. traditional pumps
- Enjoy more maintenance-free, quieter operation, as low as 45 decibels
- Give your tenants a cleaner, clearer pool
- Must use an Edison approved pool supplier to receive the discount

**You may qualify for a \$200- discount for variable-speed pool pump. Plus, up to 45% in energy savings.**



## Are these Energy Efficient?



## Multifamily Energy Efficiency Rebate Program

### Who Qualifies?

- Existing multifamily complexes with 2 or more dwelling units qualify.  
**New construction does not qualify.**
- Rebates are available for:
  - Dwelling and common areas of apartment complexes, senior living facilities, and single-room occupancy (SRO) facilities
  - Common areas of condominium complexes, mobile home parks, and single-family homeowner association (HOA) communities

### Examples of Common Area Locations

- Leasing offices
- Community Centers
- Recreation Rooms
- Laundry Rooms
- Fitness Centers
- Garages/Carports
- Breezeways/Walkways



# Multifamily Energy Efficiency Rebate Program

## Direct Install Measures

The SCE Multifamily EE Rebate (MFEER) Program offers incentives on a wide variety of energy-saving products and services for apartment dwellings - ***some at no cost.***\*

Available **No-Cost or Low-Cost** Solutions In common area only

ENERGY STAR® LED PAR/BR Lamp Replacements

ENERGY STAR® LED Downlight fixtures

ENERGY STAR® LED Candelabra

LED T8 UL Type A 4 foot\*



\*No-cost offerings include energy-efficient equipment and installation, if applicable. Customers are responsible for any required permit fees and any ancillary charges such as electrical upgrades, disposal, etc. Eligibility rules apply, visit [SCE.com/multifamily](http://SCE.com/multifamily)

## Income Qualified Programs

- For customers having difficulty balancing their energy needs and household costs
- Provides ongoing utility assistance to qualifying customers in reducing energy costs

## Income Qualified Programs



### California Alternate Rates for Energy (CARE) Family Electric Rate Assistance (FERA)

- **CARE** - Discounts of approximately 30% on the monthly electric bills.
- **FERA** - Larger Families with higher incomes receive a 12% discount on the monthly electric bill.
- Eligibility criteria includes total number of people in the household, combined with annual household income.



### Energy Assistance Fund (EAF)

- **EAF** – Helps those in need.
- Maximum of \$100 once every 12 months.
- In 2017, more than 14,000 families received assistance.
- Funded through voluntary donation by SCE employees, shareholders and customers.
- Donate through SCE bill with a fixed monthly or one time donation.



### Energy Savings Assistance Program (ESA)

- **ESA** – Helps income-qualified households conserve energy and reduce their electricity costs.
- Replaces old inefficient appliances with new, energy-efficient ones.
- SCE pays all the costs of purchasing and installation, which are free to eligible homeowners and renters.



### Cool Centers

- **Cool Centers** – Helps individuals and families beat the heat in a cool, safe air-conditioned facility.
- During the summer months approximately 250 Cool Centers are available.
- Helps minimize impact to the environment by utilizing less energy.
- Reduces health hazards by avoiding extreme hot and uncomfortable temperatures.

# Income Qualified Program Eligibility

- Eligibility criteria for income-qualified programs include total number of people in the household, combined with annual household income.
- or
- Customers may also participate under approved public assistance programs including **Medi-Cal/Medicaid; CalFresh; WIC; LIHEAP; Supplemental Security Insurance (SSI).**

CARE/FERA Income Guidelines		
Effective June 1, 2019		
Household Size	CARE/ESA	FERA
1-2	Up to \$33,820	Not eligible
3	Up to \$42,660	\$42,661 - \$53,325
4	Up to \$51,500	\$51,501 - \$64,375
5	Up to \$60,340	\$60,341 - \$75,425
Each Additional Person	\$8,840	\$8,840

# Energy Savings Assistance Program


- The Energy Savings Assistance (ESA) Program helps income-qualified households conserve energy and reduce their electricity costs by replacing their old, inefficient appliances with new, energy-efficient ones.
- As part of the program, SCE pays all the costs of purchasing and installing the measures, which are free to eligible homeowners and renters.
- Prospective households may submit a request online at SCE's website [sce.com/billhelp](http://sce.com/billhelp).

**Energy Savings  
Assistance Program™**



## FREE ENERGY-EFFICIENT APPLIANCES TO LOWER YOUR ELECTRIC BILL

Help lower your energy costs by replacing your current household refrigerator, cooling system, lighting, and more with energy-efficient models through the **Energy Savings Assistance Program**.



**The Energy Savings Assistance Program — Easy as 1-2-3**

- 1. Qualification and Assessment**  
To be eligible, you must meet specific household income guidelines. After qualification, a contractor will do a walk-thru of your home to make an assessment regarding the potential installation of one or more appliances or services.
- 2. Service Delivery**  
Installation and services, such as weatherization, are carried out by respected community service agencies and approved contractors.
- 3. Inspection**  
An inspection may be conducted to ensure you are satisfied with the updates and to verify the installed appliances and services are working properly.

**Available Appliances and Services**

**Cooling Systems**  
If your home has a working air conditioning unit, you may receive one of the following:

- A replacement, energy-efficient, central or room air conditioner; or
- An energy-efficient evaporative cooler (also called a "swamp cooler").

Note: These services may not be available in all areas.

**Refrigerator Replacement**  
An older refrigerator can be more costly to operate. A **free ENERGY STAR™** qualified model can be provided to you to replace a less efficient refrigerator. Plus, we'll also take the old refrigerator away for proper disposal and recycling at no charge.

Note: All replacement refrigerators meet ENERGY STAR standards. We will install all refrigerator models without extra features, such as ice makers. Refrigerator size depends on the size of the unit.

**Smart Power Strip**  
TVs, DVRs/home theater systems, computers, printers and game consoles are just a few electronic devices that draw power even when you think they're turned off. We'll provide a **free** smart power strip to reduce your power usage by shutting down power to your devices that go into standby mode.

**Pool Pump Replacement**  
If your home is a single-family dwelling with an in-ground swimming pool, you may be eligible for a **free** replacement pool pump that operates much more efficiently.

**Weatherization Services**  
Households with electric space heating may receive weatherization services to help keep your home warm in the winter and cool in the summer.

Note: If your home has natural gas space heating, you should contact your local gas provider for weatherization services.

**Lighting**  
Energy-efficient lighting and light bulbs can help conserve energy and save you money.

- **Light Emitting Diode (LED) bulbs** may be provided as they use less energy than ordinary incandescent bulbs and last longer.
- **Replacement outdoor fixtures with LEDs** may also be provided.
- **Energy-efficient LED torchiere lamps** may be provided to replace working models that use halogen or incandescent bulbs.

To apply for the Energy Savings Assistance Program, or for further information:

📞 1-800-736-4777      **Energy Savings Assistance Program™**

🌐 [sce.com/esap](http://sce.com/esap)

©2018 SCE, a California Edison Company. All rights reserved. 182200000701

Certain restrictions, such as age, size and condition of the system or appliance to be replaced may apply. This energy-saving assistance program is administered by California Edison and administered by Southern California Edison Center for Energy Efficiency. Different program restrictions are available on a by-case basis and subject to our policies on the program website, which may change.



# ENERGY SAVINGS ASSISTANCE (ESA) PROGRAM

Products Available	Multifamily Dwellings	Multifamily Common Area
Outdoor Fixtures (Patio/Porch Light)	No	Yes
Refrigerator	Yes	Yes
Central Air Conditioner or Heat Pump (HVAC)	Yes**	Yes
Room Air Conditioner	Yes	Yes
Evaporative Cooler	No	Yes
Variable-Speed Pool Pump	No	Yes
Weatherization (including, but not limited to) <ul style="list-style-type: none"> <li>• Faucet aerators</li> <li>• Low flow showerhead</li> <li>• Water heater blanket</li> <li>• Water heater pipe insulation</li> <li>• Attic insulation</li> </ul>	Yes	Yes
Smart Power Strip	Yes	Yes
Torchiere Lamp	Yes	Yes
LED Lighting	Yes	Yes
LED Exit Signs	No	Yes
LED Pool and Spa Lighting	No	Yes

\*\* Co-payment from property owner required for measure installed in dwelling unit occupied by tenant

# ESA Program Services Available

- In-Home Energy Education
- Smart Power Strips
- Relamping
  - Energy Efficient LED Lighting
  - Torchiere Lamp Replacement
- Refrigerator Replacement
- Pool Pump Replacement
- Air Conditioning Replacement<sup>1</sup>
- Evaporative Cooler Installation<sup>1</sup>
- Weatherization<sup>2</sup>



<sup>1</sup> Not available in all areas of SCE's service territory; based on CA Climate Zones.

<sup>2</sup> Customers with natural gas space heating should contact their local gas provider for weatherization services.

# ESA Program Eligibility

- To be eligible for ESA Program services, customers must:
  - Receive electricity from an active residential account
  - Meet the program's income requirements
  - Meet the program's feasibility requirement during installation
  - Own the home or renter must have the homeowner's written permission before services are received



**New SCE Rate Changes**

Energy for What's Ahead®



# New Standard TOU Periods



CPP events occur on weekdays; weekends and holidays are excluded.



# What are the Benefits of Time Of Use?

- ❖ 6 hours of On-Peak hours to 5 hours
- ❖ Reduced energy costs during the day (before 4 p.m.)
- ❖ More rate options to save money
- ❖ Help the environment

Energy for What's Ahead<sup>SM</sup>



Make New  
TIME-OF-USE RATES  
Work for Your Business

California is producing more energy from clean, renewable resources.

That's great for the environment!

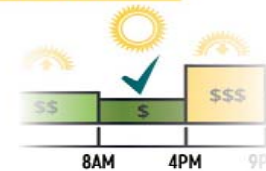


One result: The cost of electric service is changing at different times of day.



March 2019: TOU periods are changing for all SCE commercial accounts

## MORNING & MIDDAY



Renewables are abundant. Electric service costs less.



Tip: Pre-cool workspace by turning down thermostat. Charge electric vehicles.

## AFTERNOON & EVENINGS

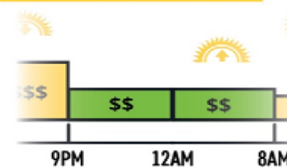


Renewables taper off. Fossil-fueled power plants ramp up. Cost of service increases.



Tip: Reduce lighting, turn off unused equipment. Set thermostat no lower than 78 degrees in summer.

## OVERNIGHT & EARLY MORNING



Demand for electricity declines. Cost of service decreases.



Tip: Run appliances like ice machines. Keep unused equipment turned off to save energy.



Learn more at [sce.com/tou](http://sce.com/tou)

# Summer Savings with Critical Peak Pricing



[www.sce.com/ratetool](http://www.sce.com/ratetool)

## How does it work?

- ❖ Demand Response Program
- ❖ Reduce energy during 12 CPP events a year
- ❖ Earn bill credits during summer months
- ❖ Plan your energy usage with day-ahead notifications
- ❖ Guaranteed bill protection 1<sup>st</sup> 12 months



**Powerful Solutions for  
What's Ahead**

Energy for What's Ahead<sup>SM</sup>





# Low Cost/No Cost Energy Savings Solutions

## No-Cost Temporary Reduction Tips

- Turn off unneeded lighting
- Reduce lighting levels
- Raise cooling thermostat to 78°
- Pre-cool building/work areas or cycle A/C and ventilation
- Turn off equipment when not in use
- Shut down unused rooms and facilities
- Charge batteries and battery-operated equipment before noon and after 6 p.m. on weekdays
- Turn off decorative fountains

## Low-Cost Permanent Reduction Tips

- Lighting/equipment
- Motors
- Refrigeration
- HVAC
- Weatherize
- Water heating



Visit [sce.com/energytips](http://sce.com/energytips) for more customized tips and information by business type.

# Midstream Point of Purchase Solutions

## Instant Incentives for LED Products and Foodservice Equipment

See the website link below  
for details on eligible  
equipment and for a list of  
approved distributors



[www.sceonlineapp.com/MidstreamPOP.aspx](http://www.sceonlineapp.com/MidstreamPOP.aspx)



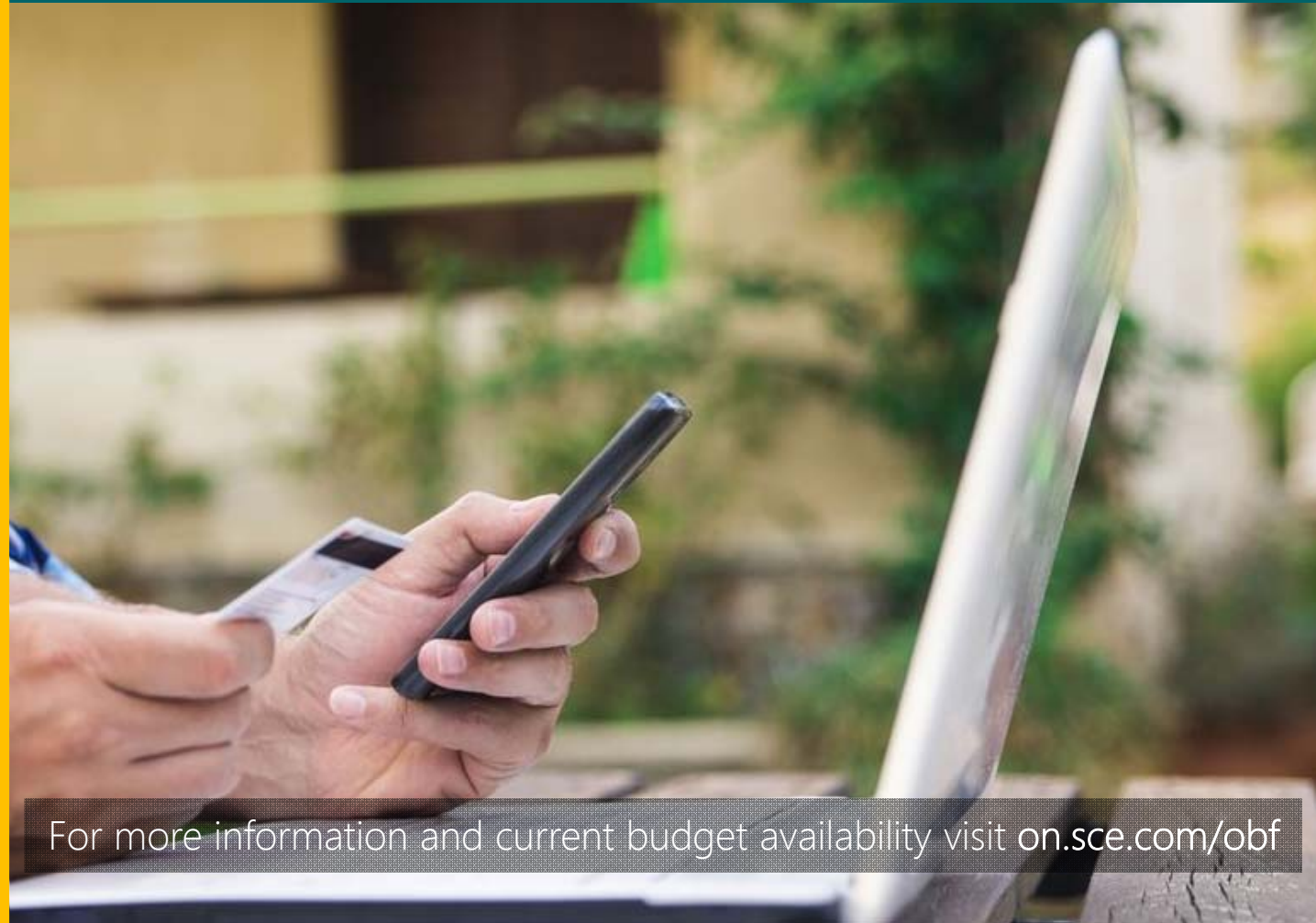
# On-Bill Financing

On-Bill Financing (OBF) program offers you:

- 0% interest loans
- No fees or loan costs
- Convenient loan repayment via their utility bill

## Program Highlights

- \$5,000 to \$100,000 loan amount for Commercial customers and up to 60 month loan term



For more information and current budget availability visit [on.sce.com/obf](https://on.sce.com/obf)



- Economic Development Rate (EDR)
- Local, State, and Federal Tax Incentive Information
- State and Federal Tax Credit
- Training Programs
- Assistance from Local, County, and State Agencies
- Site Selection Assistance
- Access to Capital, Financial Programs, and Incentives
- Economic Impact Analysis

## Economic Development Services (EDS)

Specialized Services to Help Retain, Expand, and Attract Businesses



# Bloomberg

Visit [www.sce.com/economicdevelopment](http://www.sce.com/economicdevelopment) for more information and contact EDS directly at: [EconomicDevelopment@sce.com](mailto:EconomicDevelopment@sce.com)

# Southern California Edison Foodservice Technology Center

Energy for What's Ahead<sup>®</sup>



# Foodservice Technology Center



Since 1993 the Foodservice Technology Center has offered seminars, workshops, demonstrations and tours that provide the training, support and guidance in energy efficiency to the foodservice industry.

# Consultations and Demonstrations



**Consulting and equipment reviews for your existing location(s), new site(s) or remodel(s).**

- Bring in your site drawings or equipment schedule for a review and recommendations.
- View a showcase of the latest energy-efficient commercial foodservice technologies.



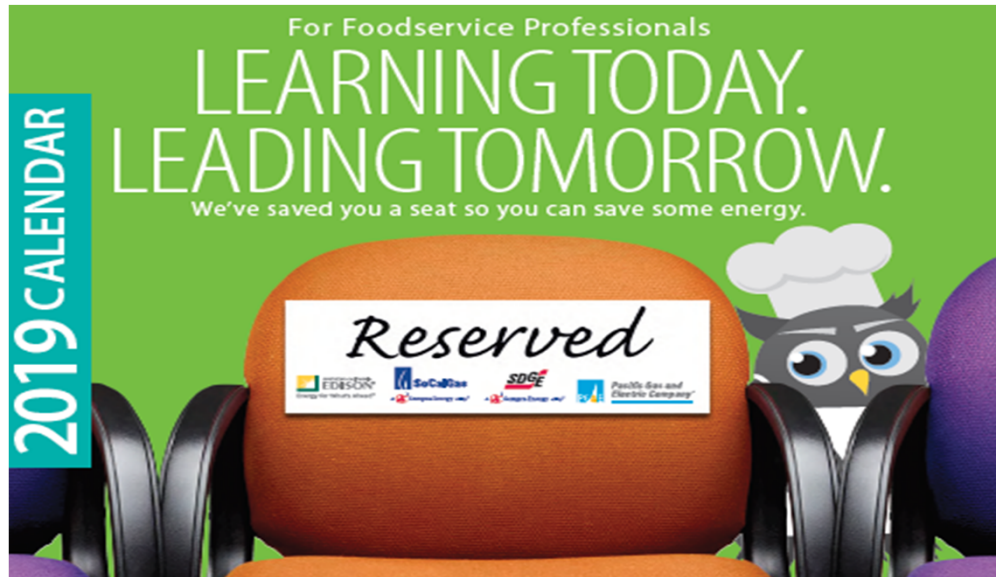
# Try Before You Buy - Equipment Testing



## Do side-by side comparison testing of multiple cooking technologies.

- Test-drive deck, combination, convection, conveyor, cook and hold, retherm and rapid cook ovens.
- Compare fryers or griddles to see which units provide the best product for your menu.
- Up to 60 pieces of equipment on site to try.

# Workshops & Seminars



**Free workshops and seminars for foodservice businesses and restaurants.**

- Gain information on how to achieve energy and cost savings and reduce operating expenses
- Students and individuals new to the industry can also gain valuable, practical insights that will enhance your culinary education.



# Training & Meeting Space



**Host your next equipment training or sales meeting at the Foodservice Technology Center.**

- Conveniently located off the 210 just east of the 605
- In-house audio visual services
- Catering options
- Free parking

# Energy Audits



SOUTHERN CALIFORNIA  
**EDISON**<sup>®</sup>  
Southern California Edison  
Foodservice Technology Center



Good for one  
**FREE**  
customized energy audit of your foodservice business

A certified engineer from Southern California Edison will come to your foodservice business to examine the following areas and make recommendations.

- Kitchen and Serving**  
Lighting (Illumination)  
Water (Sanitation)  
Air (Ventilation)  
Refrigeration (Cold Food)  
Food Prep (Hot Food)
- Dish Room**  
Lighting (Illumination)  
Air (Ventilation)  
Water (Sanitation)
- Parking Lot and Exterior**  
Lighting (Illumination)  
Air (HVAC)
- Dining Room**  
Lighting (Illumination)  
Air (HVAC)
- Rooftop**  
Air (Ventilation)  
Refrigeration (Cold Food)

To make an appointment, please email us at:  
[eeclftc@sce.com](mailto:eeclftc@sce.com) or call 626-812-7666

**We offer FREE customized energy audits of your foodservice business.**

## **Kitchen and Serving**

Lighting (Illumination)  
Water (Sanitation)  
Air (Ventilation)  
Refrigeration (Cold Food)  
Food Prep (Hot Food)

## **Dining Room**

Lighting (Illumination)  
Air (HVAC)

## **Dish Room**

Lighting (Illumination)  
Air (Ventilation)  
Water (Sanitation)

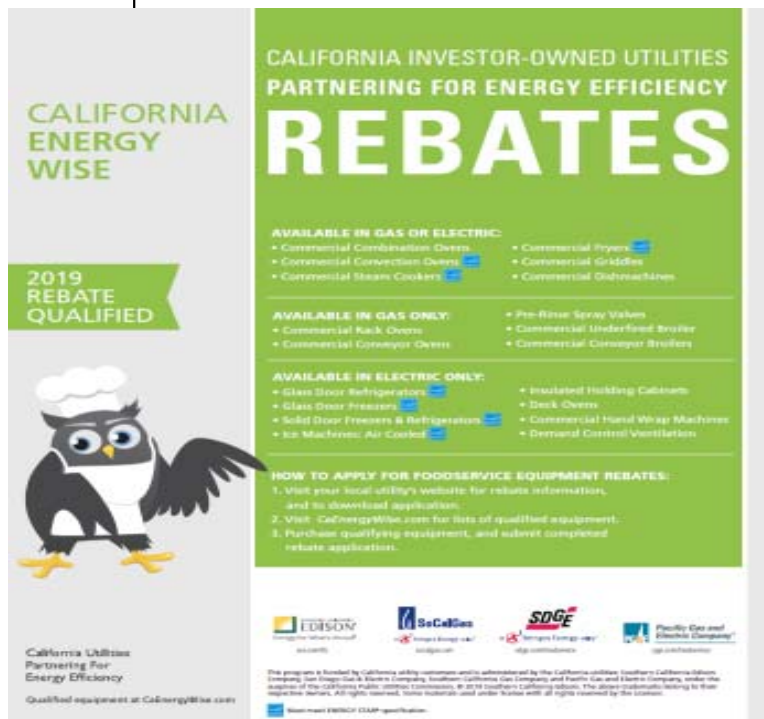
## **Parking Lot & Exterior**

Lighting (Illumination)  
Air (HVAC)

## **Rooftop**

Air (Ventilation)  
Refrigeration (Cold Food)

# Rebates & Incentives



**CALIFORNIA ENERGY WISE**

**2019 REBATE QUALIFIED**

**CALIFORNIA INVESTOR-OWNED UTILITIES PARTNERING FOR ENERGY EFFICIENCY**

# REBATES

**AVAILABLE IN GAS OR ELECTRIC:**

- Commercial Combination Ovens
- Commercial Convection Ovens
- Commercial Steam Cookers
- Commercial Fryers
- Commercial Griddles
- Commercial Dishwashers

**AVAILABLE IN GAS ONLY:**

- Commercial Rack Ovens
- Commercial Conveyor Ovens
- Pre-Rinse Spray Valves
- Commercial Underfeed Broiler
- Commercial Conveyor Broilers

**AVAILABLE IN ELECTRIC ONLY:**

- Glass Door Refrigerators
- Glass Door Freezers
- Solid Door Freezers & Refrigerators
- Ice Machines: Air Cooled
- Insulated Holding Cabinets
- Deck Ovens
- Commercial Heat Wrap Machines
- Demand Control Ventilation

**HOW TO APPLY FOR FOODSERVICE EQUIPMENT REBATES:**

- Visit your local utility's website for rebate information, and to download application.
- Visit [CaEnergyWise.com](http://CaEnergyWise.com) for lists of qualified equipment.
- Purchase qualifying equipment, and submit completed rebate application.

California Utilities Partnering For Energy Efficiency  
Qualified equipment at [CaEnergyWise.com](http://CaEnergyWise.com)

EDISON SoCalGas SDGE Pacific Gas and Electric Company

This program is funded by California utility customers and is administered by the California utilities: Southern California Edison Company, San Diego Gas & Electric Company, Southern California Gas Company and Pacific Gas and Electric Company, under the auspices of the California Public Utilities Commission. © 2019 Southern California Edison. The above trademarks belong to their respective holders. All rights reserved. Some restrictions and other notices will apply. All rights reserved by the Licensor.

Rebates are available for both gas and electric appliances

How to apply

- Visit [sceonlineapp.com](http://sceonlineapp.com) to download the application
- Visit [caenergywise.com](http://caenergywise.com) for a list of qualified equipment
- Purchase the qualifying equipment, and submit your completed rebate application

# California Energy Wise caenergywise.com



**One stop shop for everything you need to make your commercial foodservice business energy efficient.**

- Equipment Rebates
- Calendar of Foodservice Seminars
- Energy Savings Calculators
- Do It Yourself (DIY) Energy Surveys
- Design Guides for Commercial Kitchen Systems

## Table Top Induction Range Lending Program



**EDISON**  
Energy for What's Ahead®

**FOODSERVICE TECHNOLOGY CENTER**  
Table Top Induction Range  
Lending Program



Did you know that you can borrow a table top induction unit from Southern California Edison's (SCE) Foodservice Technology Center for free? Whether you are a California business or residential customer of SCE, you can borrow units from us for free. [Learn more at sce.com/ftc.](http://sce.com/ftc)

**Borrow a table top induction unit for FREE for up to 14 days.**

### **Benefits of Induction**

- No Standing Pilot
- Cool and Safe to Touch
- Cooler Kitchen
- Easy to Clean
- Flexible
- Cook and Hold Modes
- Fast
- Controllable (Precise Temperature)
- Efficient


# Where To Find Us

Online

[SCE.com/FTC](http://SCE.com/FTC)

Foodservice Technology Center

Home > Your Home > Energy Education Centers > Foodservice Technology Center



**Cooking Up Savings - The Food Service Technology Center**


Our Foodservice Technology Center (FTC) is a one-of-a-kind demonstration kitchen that showcases the latest energy-efficient commercial foodservice equipment and technologies for your restaurant or foodservice facility. We encourage you to come by the FTC, take a tour and 'Try Before You Buy' by "test-driving" leading manufacturers' equipment before you make your purchase decision. Find ways to speed up your cookline, improve product quality and enhance your bottom line by saving energy and money.

**Contact Us**

**Foodservice Technology Center**  
6050 N. Irwindale Avenue  
Irwindale, CA 91702  
Phone: 626-812-7666  
Hours: Monday - Friday, 8 a.m. - 5 p.m.  
Email: [eeclftc@sce.com](mailto:eeclftc@sce.com)

Google


Foodservice Technology Center



**Foodservice Technology Center**  
Electric utility company

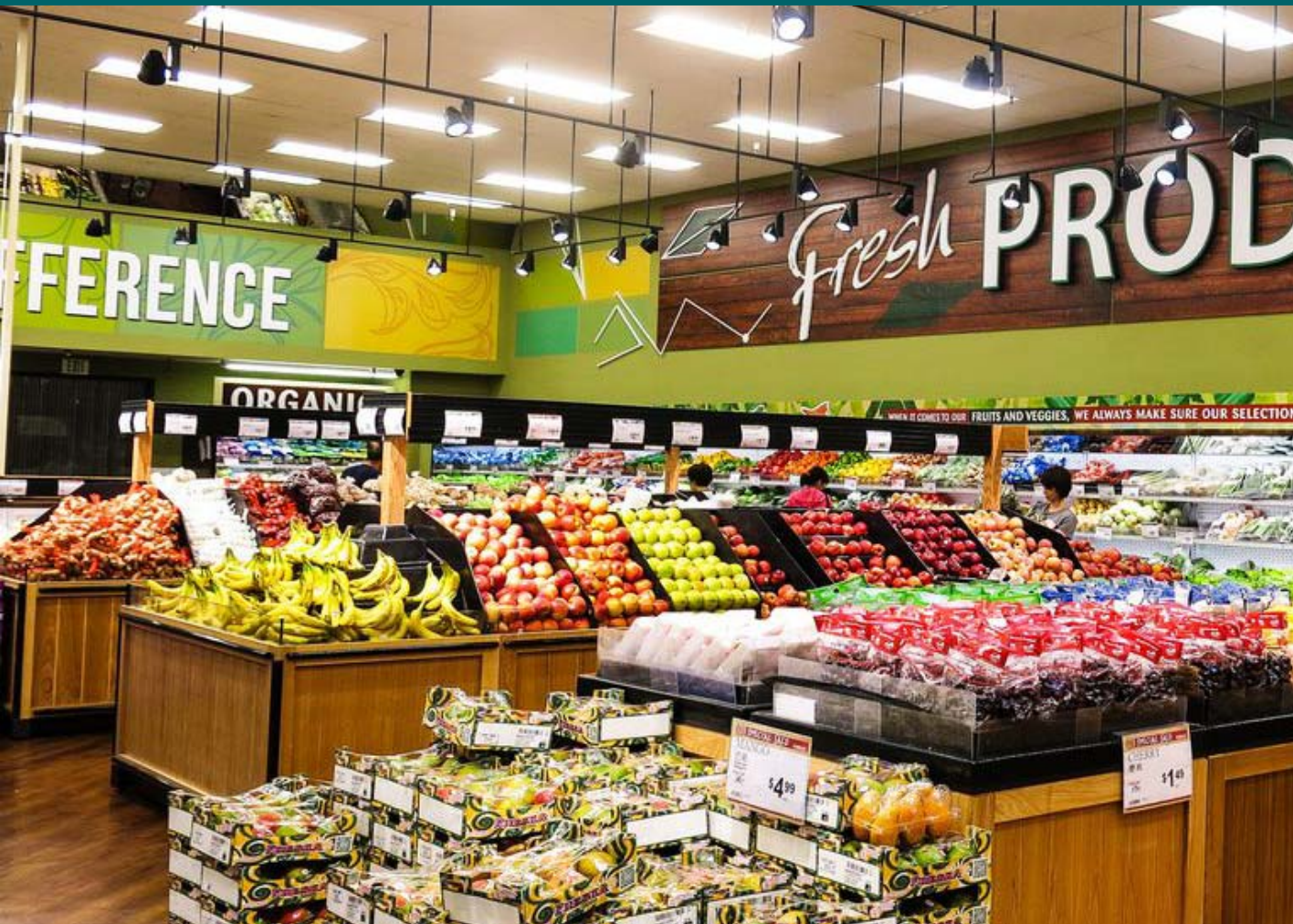
Directions Save Nearby Send to your phone Share

6050 Irwindale Ave Suite E, Irwindale, CA 91702  
43F8+RH Irwindale, California  
[sce.com/ftc](http://sce.com/ftc)  
(626) 812-7666  
8AM-5PM





# Direct Install



**No cost or low cost  
energy efficiency  
equipment upgrades**

**Upgrade to LED lighting**

**Available Upgrades:**

- LED T8 fixtures
- PAR
- R/BR LEDs
- Candelabra LEDs
- Auto Door Closers







## Online Business Tools

Energy for What's Ahead<sup>SM</sup>

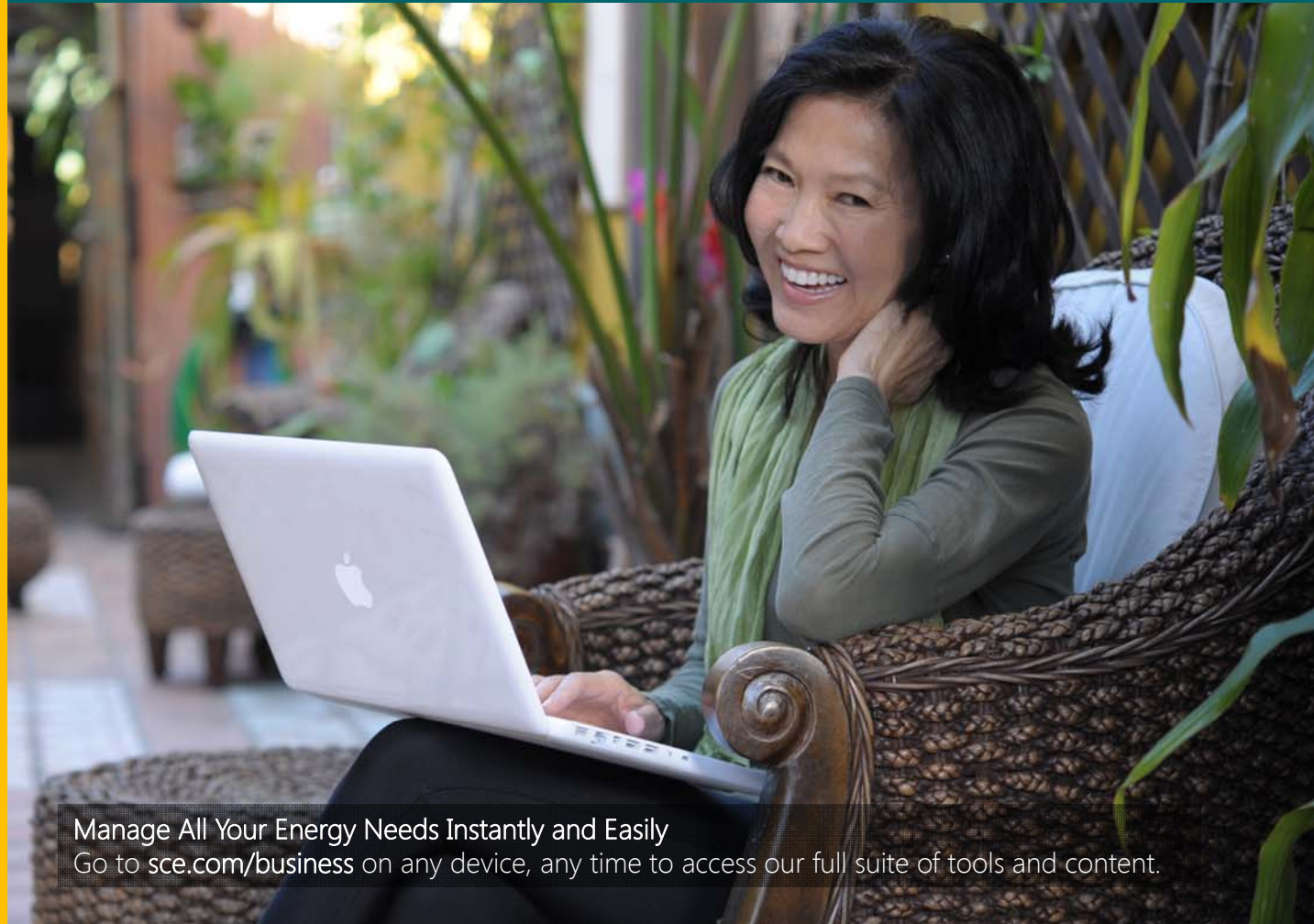


## Everything You Need to Better Manage Your Energy Usage

### My Account

- Rate Analyzer Tool
- Budget Assistant
- Business Energy Advisor
- Green Button
- Update Your Contact
- Demand Response Event Alerts
- Turn Service On/Off

## Online Business Tools



Manage All Your Energy Needs Instantly and Easily  
Go to [sce.com/business](https://sce.com/business) on any device, any time to access our full suite of tools and content.



# Energy Education Centers



## Energy Education Centers in Irwindale and Tulare

- Free Seminars
- Free Workshops
- Tours
- Hands-On Exhibits
- Tool lending library
- Try before you buy foodservice equipment

[sce.com/workshops](http://sce.com/workshops)

1-626-812-7537 or

1-800-336-2822



# EDISON SCHOLARS

Do you want to **change**  
the world through **STEM?**

Become an Edison Scholar. Edison International is awarding **\$40,000 college scholarships to 30 high school seniors** to help them follow their dreams in science, technology, engineering or math (STEM) and empower them to change the world.

## Connect With Me



Joyce Lui

626-812-7308

@SCE\_JoyceH

