

Notice and Agenda

REGULAR MEETING — BOARD OF DIRECTORS — SANTA CLARITA VALLEY SANITATION DISTRICT

To be held at the SANTA CLARITA CITY HALL
23920 Valencia Boulevard, Santa Clarita, California

THE DISTRICT MAY TAKE ACTION ON ANY AGENDA ITEM LISTED BELOW

TUESDAY	February 20, 2024	At 11:00 A.M.
Governing Body	Director	Alternate
SANTA CLARITA	SMYTH	MC LEAN
SANTA CLARITA	WESTE (Chairperson)	MC LEAN
LOS ANGELES COUNTY	HORVATH	BARGER

1. Public Comment
2. Receive and Order Filed Certificate of Ms. Lindsey Horvath, Presiding Officer of the Board of Supervisors of the County of Los Angeles
3. Approve Minutes of Regular Meeting Held January 16, 2024
4. Approve November 2023 Expenses in Amount of \$5,841,347

Summary: Local District expenses represent costs that are the sole responsibility of the individual District. Allocated expenses represent the District’s proportionate share of expenses made by District No. 2, the administrative District, on its behalf pursuant to the Joint Administration Agreement. This Agreement provides for the joint administration and technical support for all of the signatory Districts along with the methodology for determining the proportionate costs for each District. A listing of Districts’ payments and previously approved budgets can be found on the Districts’ website at lacs.d.org/financial-documents. This item is consistent with the Districts’ Guiding Principle of commitment to fiscal responsibility and prudent financial stewardship.

Local District Expenses:	
Operations & Maintenance	\$2,707,628
Capital	2,581,915
Allocated Expenses:	
Joint Administration	217,274
Technical Support	334,530
Total Expenses	<u>\$5,841,347</u>

5. Re: Annexations Nos. 1116, 1130, 1131, 1132, 1135, and 1136 to District
 - (a) Adopt Resolutions for Making Application to Local Agency Formation Commission (LAFCO) for Annexation; Review, Consider and Find Adequate [California Environmental Quality Act \(CEQA\) Document for Annexation No. 1116](#); Review, Consider and Find Adequate [CEQA Document for Annexation No. 1130](#); Review, Consider and Find Adequate [CEQA Document for Annexation No. 1132](#); and Consent to Waiver of Protest Proceedings
 - (b) Adopt Joint Resolution with County of Los Angeles, Antelope Valley Resource Conservation District, Santa Clarita Valley Water Agency, Greater Los Angeles County Vector Control District, City of Santa Clarita, and Santa Clarita Library Approving and Accepting Negotiated Exchange of Property Tax Revenues Resulting from Annexations Nos. 1116, 1130, 1132 and 1136
 - (c) Adopt Joint Resolution with County of Los Angeles, Greater Los Angeles County Vector Control District, City of Santa Clarita, Santa Clarita Street Lighting Maintenance District No. 2, Santa Clarita Library, and Santa Clarita Valley Water Agency Approving and Accepting Negotiated Exchange of Property Tax Revenues Resulting from Annexations Nos. 1131 and 1135

Summary: Annexation No. 1116 consists of 492 proposed single-family homes in unincorporated Los Angeles County, and a portion of the territory to be annexed is in the City of Santa Clarita. Annexation No. 1130 consists of one proposed shopping center, Annexation No. 1131 consists of a parcel that needs to be included in a development due to a lot line adjustment, Annexation No. 1132 consists of 348 proposed apartments and 150 proposed condominiums, Annexation No. 1135 consists of one proposed restroom facility within a park, and Annexation No. 1136 consists of one existing single-family home, all in the City of Santa Clarita. Each annexation to the District’s service area requires adoption of two resolutions by the Board. The first resolution authorizes submittal of the annexation application to

5. Contd.

LAFCO, approves the CEQA document (if applicable), and consents to a waiver of the LAFCO protest hearing. The second resolution is a joint resolution with agencies that already provide services to the proposed annexation territory agreeing to the amount of property tax revenue that will be apportioned to the District in accordance with the Revenue and Taxation Code. A data sheet, map, and Notice of Finding for each annexation are attached. Links to the CEQA documents for Annexations Nos. 1116, 1130, and 1132 are provided above.

6. Re: Temperature Monitoring and Biological Collection Services for Temperature Compliance Studies in Santa Clara River

- (a) Confirm Issuance of Purchase Order to Environmental Science Associates (ESA) in Amount of \$75,000
- (b) Authorize Issuance of Purchase Order to ESA in Amount of Approximately \$156,300

Summary: The Los Angeles Regional Water Quality Control Board (Regional Board) lowered temperature requirements in surface water discharge permits issued to the Saugus and Valencia Water Reclamation Plants (WRPs). Because the WRPs cannot immediately comply with the new requirements, the Regional Board established an eight-year schedule to bring each plant into compliance. The schedule allows the District to conduct temperature studies in the Santa Clara River and, if appropriate, propose new site specific temperature objectives that are protective of the river. Through a competitive bid process, ESA was retained to provide consulting services to assess the effects of waterbody temperature on aquatic life in the river. To support these services, ESA has recommended additional river temperature monitoring and biological collection activities. ESA has provided a cost proposal of approximately \$231,300 for this additional work, which staff has deemed reasonable. In August 2023, ESA was issued an initial \$75,000 purchase order to allow temperature monitoring to begin as soon as possible, but additional funds are necessary to continue this work. Staff has determined that the activities described herein are not subject to the provisions of the California Environmental Quality Act (CEQA) pursuant to Title 14 of the California Code of Regulations (“CEQA Guidelines”) Sections 15306, 15307 and 15308. This item is consistent with the Districts’ Guiding Principle of commitment to operational excellence (protection of public health and the environment, regulatory compliance, and cost effectiveness).

7. Re: Authorize Issuance of Supplemental Purchase Order to Golden State Labor Compliance, LLP (Golden State), in Amount of Approximately \$40,000, to Provide Labor Compliance Services for *Valencia Water Reclamation Plant Advanced Water Treatment Facility* (Project)

Summary: In January 2019, the Board authorized issuance of a purchase order to Golden State for approximately \$90,000 to provide Labor Compliance Program services to comply with State Revolving Fund and Proposition 1 grant requirements for the Project. In June 2022, due to various delays associated with the construction of the Project, the Board authorized issuance of a supplemental purchase order to Golden State for approximately \$46,000, which at the time was expected to be sufficient to cover the Labor Compliance Program services costs for the duration of the Project. Although the majority of the construction activities for the Project have now been completed, the commissioning of the advanced water treatment system has taken longer than originally anticipated and therefore additional funds are required to compensate Golden State for their continued services through completion of the Project. This item is consistent with the Districts’ Guiding Principle of commitment to operational excellence (protection of public health and the environment, regulatory compliance, and cost effectiveness).

8. Approve Change Order No. 2 to Contract No. 5447 with Blois Construction, Inc., for Construction of *Soledad Canyon Relief Trunk Sewer Section 4* (Project); Resulting in Payment of \$1,849,561 for Extra Work

Summary: As part of the Project, the contractor was required to tunnel underneath the Santa Clara River to install 900 feet of 60-inch diameter steel casing that contained two 18-inch-diameter vitrified clay pipe sewer lines. During the design phase of the Project, the riverbed was dry due to drought conditions and the groundwater table was well below the elevation of the proposed tunnel. Because of the anticipated dry conditions, the contractor had proposed to use an open-faced tunnel boring machine to complete the Project. Prior to beginning the tunneling operation, it was determined that the groundwater table underneath the river had risen to more than 10 feet above the levels shown in the contract document as the result of heavy rains that occurred in early 2023. The contractor was no longer able to utilize an open-faced tunnel machine due to the high groundwater conditions. The contractor was therefore directed to change tunneling methods and to utilize a more complex, closed-faced, earth pressure balanced microtunnel boring machine designed to tunnel in high groundwater conditions. This item is consistent with the Districts’ Guiding Principles to protect financial and facility assets through prudent investment and maintenance programs; and commitment to operational excellence (protection of public health and the environment, regulatory compliance, and cost effectiveness).

9. Receive and Order Filed [*Annual Comprehensive Financial Report*](#) (ACFR) for Fiscal Year Ending June 30, 2023

Summary: The Districts' ACFR for the fiscal year ending June 30, 2023, which includes the annual audit required by state and federal laws, has been previously distributed to the Directors. This item is consistent with the Districts' Guiding Principles of commitment to fiscal responsibility and prudent financial stewardship; and to protect financial and facility assets through prudent investment and maintenance programs.

10. Re: Consideration of Newhall Land and Farming Company (NLFC) Proposal Regarding Provision of Regional Sewerage Service with Newhall Ranch Sanitation District (NRSD)

Summary: The Board previously adopted the Joint Sewerage System Agreement (JSSA) with the NRSD. The JSSA establishes the conditions for the acceptance of cross boundary wastewater flows including the equitable allocation of costs. Under the JSSA, each District will own and operate wastewater facilities within its boundaries and make excess capacity available to the other District at the receiving District's standard rates. The JSSA also allocates many of the rights and responsibilities related to provision of wastewater service within the Newhall Ranch Development to the NRSD. The Newhall Ranch developer, NLFC, has requested minor revisions to the JSSA for cross-boundary flow between the District and the NRSD affecting the construction schedule for the Newhall Ranch Water Reclamation Plant (WRP). In exchange for the Santa Clarita Valley Sanitation District's (SCVSD) support of these minor changes, NLFC has offered to provide an option to purchase land near the Valencia WRP and funding for an updated planning study for the SCVSD treatment facilities. A letter describing the revisions is attached. The Chief Engineer and General Manager will discuss the NLFC proposal with the Board. This item is consistent with the Districts' Guiding Principle to provide reliable and responsible services with safety first.

11. Report on Districts' Operations During February 1st and 4th – 6th Storms

Summary: The Chief Engineer and General Manager will provide a report on Districts' operations during the recent storms.

12. Re: Wastewater Revenue Program Update – Service Charge Rates

Summary: At the January 16, 2024, Board meeting, the Chief Engineer and General Manager discussed budgetary needs, proposed service charge rates, and the rate ordinance implementation process. The Board requested additional information regarding the proposed service charge rate increases. The Chief Engineer and General Manager will provide the requested additional information. This item is consistent with the Districts' Guiding Principles of commitment to fiscal responsibility and prudent financial stewardship; and to plan for both short-term and long-term needs to minimize the need for significant rate increases.

Adjourn

Status Report: Prior to or during the meeting session, the Chief Engineer and General Manager may update the Directors on various matters concerning the Districts that may be of current interest to the Directors.

Public Comment: Members of the public may address the Board of Directors on any item shown on the agenda or matter under the Board's authority. A "Request to Address Board of Directors" form is available. In compliance with the Americans with Disabilities Act, if you require special assistance to participate in this meeting, please contact the Secretary to the Boards' Office (562) 908-4288, extension 1100. Notification of 48 hours prior to the meeting will enable staff to make reasonable arrangements to ensure accessibility to this meeting. (28CFR 35.101 et seq. ADA Title II).

Document Requests: Links to supporting documents are available online at the time of posting. Agendas and supporting documents or other writings that will be distributed to Board members in connection with matters subject to discussion or consideration at this meeting that are not exempt from disclosure under the Public Records Act are available for inspection following the posting of this agenda at the office of the Secretary to the Boards of Directors located at the Districts' Joint Administration Building, 1955 Workman Mill Road, Whittier, California, 90601, or at the time of the meeting at the address posted on this agenda.

SANTA CLARITA VALLEY SANITATION DISTRICT OF LOS ANGELES COUNTY

PROPOSED ANNEXATION NO. 1116

AGENDA DATE: Resolution Making Application to LAFCO February 20, 2024

LOCATION: Located at the northeast extension of Shadow Pines Boulevard and east of Jasmine Valley Drive, a majority within unincorporated Los Angeles County and a portion in the City of Santa Clarita, as shown on the attached map.

PROCESSING FEES:	District	\$ 45,600.00
	Local Agency Formation Commission	14,000.00
	State Board of Equalization	<u>2,500.00</u>
	Total:	\$ <u>62,100.00</u>

DESCRIPTION & REMARKS: The annexation consists of 492 proposed single-family homes.

NOTICE OF FINDING/CERTIFICATE OF FILING

ANNEXATION NO. 1116 TO SANTA CLARITA VALLEY SANITATION DISTRICT

The annexation consists of 492 proposed single-family homes.

1. **BASED UPON REVIEW AND STUDY, I FIND AND CERTIFY THAT:**

- The annexation **is exempt** from the provisions of the California Environmental Quality Act, pursuant to the State CEQA Guidelines,

Section:

Reason:

- The **Negative Declaration** is adequate for consideration of the annexation.
- The **Environmental Impact Report** is acceptable for consideration of the annexation.

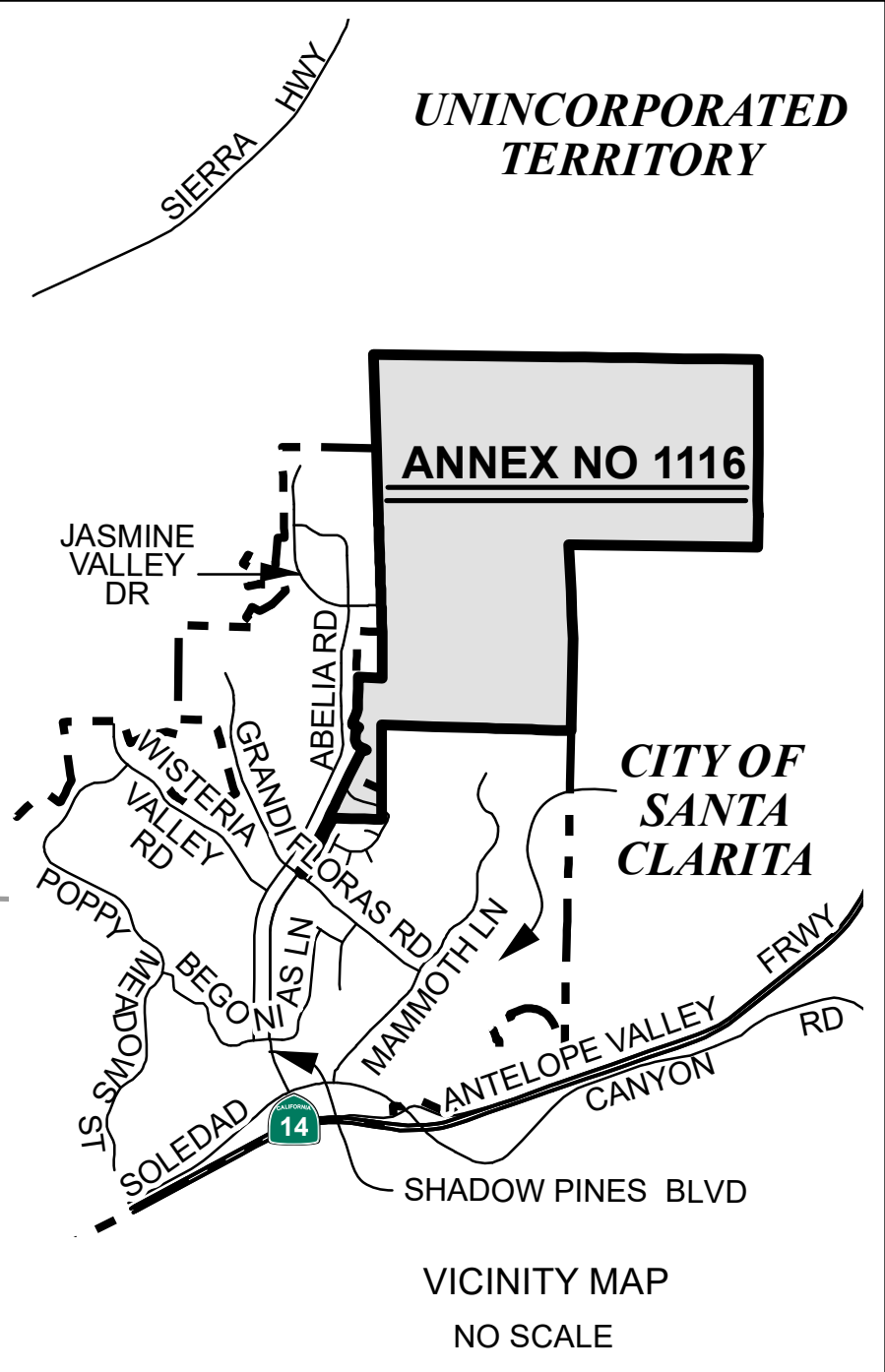
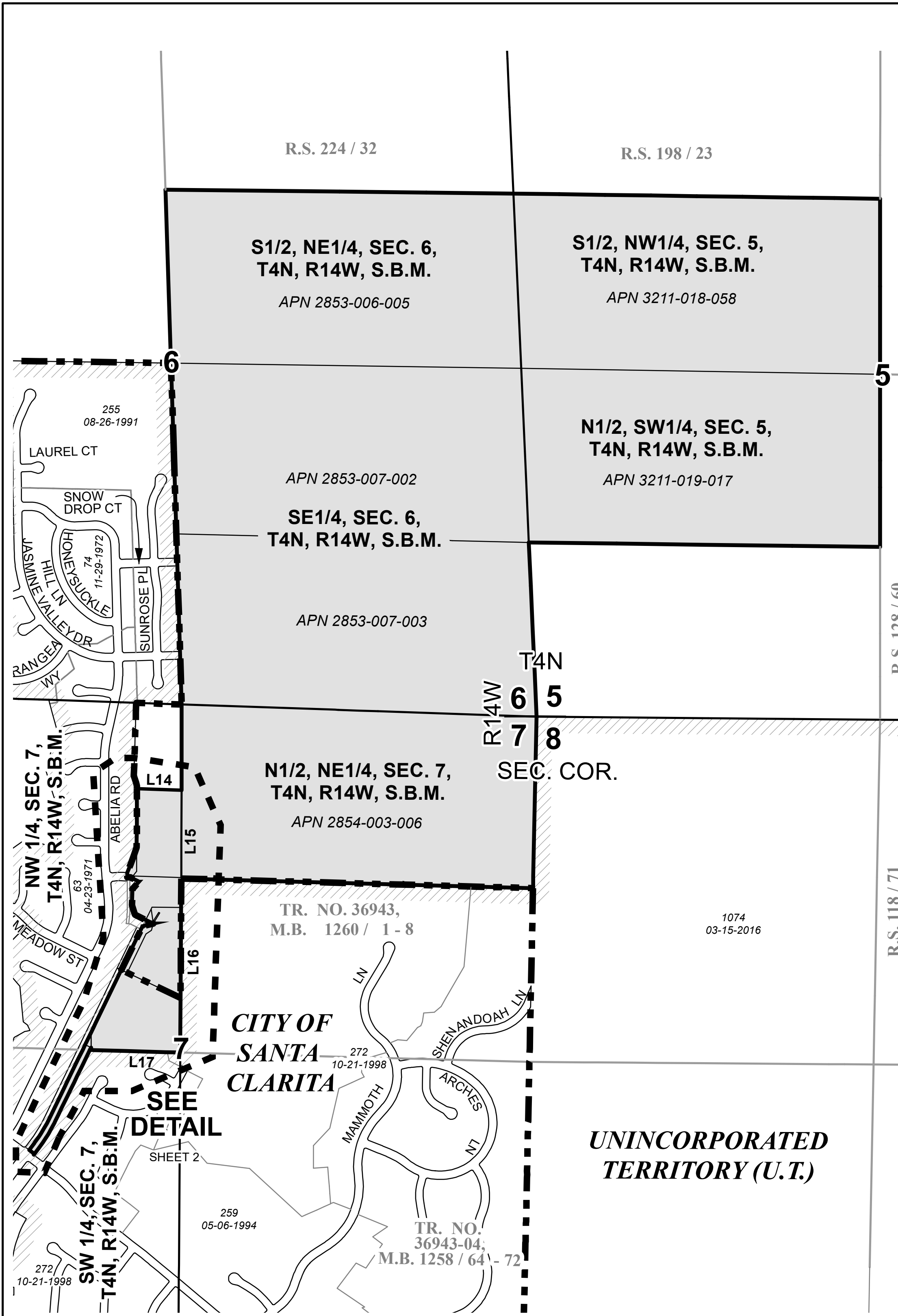
ISSUED BY:

- Los Angeles County Department of Regional Planning
- City of

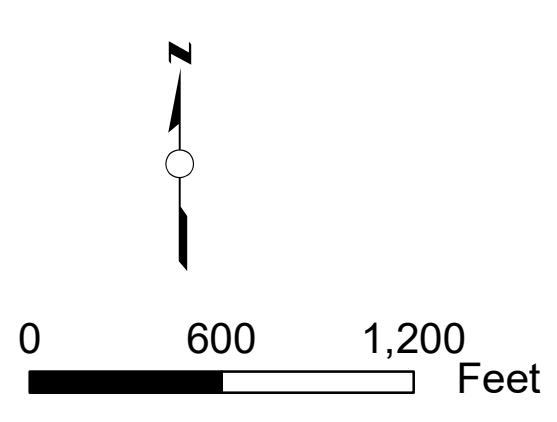
2. The subject annexation has been set for consideration before the Board of Directors of Santa Clarita Valley Sanitation District at their meeting to be held on February 20, 2024, at the time and place as provided for the meeting of said date.
3. The subject annexation and all related documents are on file in the office of the Chief Engineer and General Manager, Los Angeles County Sanitation Districts, 1955 Workman Mill Road, (P.O. Box 4998) Whittier, California and may be examined by any interested person for further particulars. Telephone: (562) 908-4288, extension 2708.



Stan Pegadiotes
Division Engineer
Facilities Planning Department



"FOR TAX ASSESSMENT PURPOSES ONLY"



Annexation No. 1116 shown thus [shaded box]
 Boundary of Santa Clarita Valley Sanitation District [dashed line]
 Prior to Annexation No. 1116 shown thus [hatched box]
 City Boundary [solid line]
 Prior Annexations shown thus [dotted line]
 Area of Annexation 521.576 ± Acres

ANNEX. NO.
(RECORDING DATE)

LA County Assessor Landbase 2016,
 CAMS Centerline, DPW City boundary
 LA County Sanitation Districts:
 AnnexationLayer and District Layer

SANTA CLARITA VALLEY
 SANITATION DISTRICT
 OF LOS ANGELES COUNTY, CA
 OFFICE OF CHIEF ENGINEER
 ROBERT C. FERRANTE
 CHIEF ENGINEER & GENERAL MANAGER

ANNEXATION NO. 1116
 TO
 SANTA CLARITA VALLEY
 SANITATION DISTRICT

Recorded:

TRUE POINT OF BEGINNING

S'LY CORNER TR. NO. 26021 M.B. 802, 33 - 39

N 36°44'23" E 51.00'

POINT OF BEGINNING

DETAIL
NO SCALE

NW 1/4, SEC. 7, T4N, R14W, S.B.M.

CITY

TR. NO. 26021, M.B. 802 / 33 - 39

CAMELIA HILL WY

47 11-18-1968

SW 1/4, SEC. 7, T4N, R14W, S.B.M.

TRUE POINT OF BEGINNING

POINT OF BEGINNING

TR. NO. 25006, M.B. 763 / 64 - 71

Annexation No. 1116 shown thus

Boundary of Santa Clarita Valley Sanitation District

Prior to Annexation No. 1116 shown thus

City Boundary

Prior Annexations shown thus

Area of Annexation 521.576 ± Acres

LA County Assessor Landbase 2016, CAMS Centerline, DPW City boundary LA County Sanitation Districts: AnnexationLayer and District Layer

N1/2, NE 1/4, SEC. 7, T4N, R14W, S.B.M.

APN 2854-003-006

UNINCORPORATED TERRITORY (U.T.)

L14

N'LY LINE INST. NO. 2511, DATED 5/25/1970

L13

L12

L11

L10

L9

L8

L7

L6

L5

L4

L3

L2

L1

L18

L17

L16

L15

L14

L13

L12

L11

L10

L9

L8

L7

L6

L5

L4

L3

L2

L1

L18

L17

L16

L15

L14

L13

L12

L11

CENTER SECTION 7

SANTA CLARITA

TR. NO. 45930, M.B. 1150, 1 - 8

251 01-07-1991

TR. NO. 12100, M.B. 1260 / 1 - 8

259 05-06-1994

ANNEX. NO. (RECORDING DATE)

521.576 ± Acres

UNINCORPORATED TERRITORY

ANNEX NO 1116

CITY OF SANTA CLARITA

VICINITY MAP
NO SCALE

COURSE DATA

L1	N 36°44'23" E	50.20'	
C2	R= 1200.00' L= 229.51'	D= 10°57'30"	
L3	N 25°46'53" E	1638.13'	
L4	N 75°32'43" E	85.15'	
L5	N 64°13'07" W	155.00'	
L6	N 18°22'48" W	79.06'	
L7	N 02°22'56" E	123.10'	
L8	N 40°26'53" E	74.84'	
L9	N 63°14'11" W	71.70'	
L10	N 89°56'53" W	25.00'	
L11	N 00°03'17" E	39.50'	
L12	N 19°35'48" E	206.67'	
L13	N 00°08'55" E	449.23'	
L14	S 88°13'06" E	341.57'	
L15	S 00°08'32" W	677.44'	
L16	S 00°08'32" W	1337.70'	
L17	N 88°30'36" W	683.25'	
L18	N 00°08'29" E	19.10'	
L19	S 25°46'53" W	630.02'	
C20	R= 1250.00' L= 239.07'	D= 10°57'30"	
L21	S 36°44'23" W	66.93'	
C22	R= 19.00' L= 20.47'	D= 61°43'35"	
L23	N 53°15'37" W	40.00'	

"FOR TAX ASSESSMENT PURPOSES ONLY"



0 200 400 Feet

SANTA CLARITA VALLEY SANITATION DISTRICT
OF LOS ANGELES COUNTY, CA
OFFICE OF CHIEF ENGINEER
ROBERT C. FERRANTE
CHIEF ENGINEER & GENERAL MANAGER

ANNEXATION NO. 1116

TO

SANTA CLARITA VALLEY SANITATION DISTRICT

Recorded:

JOINT RESOLUTION OF THE BOARD OF SUPERVISORS OF THE COUNTY OF LOS ANGELES
ACTING IN BEHALF OF

- Los Angeles County General Fund
- Los Angeles County Library
- Los Angeles County Road District #5
- Los Angeles County Consolidated Fire Protection District
- Los Angeles County Flood Control

THE BOARD OF DIRECTORS OF SANTA CLARITA VALLEY SANITATION DISTRICT OF LOS ANGELES COUNTY, AND THE GOVERNING BODIES OF

- Antelope Valley Resource Conservation District
- Santa Clarita Valley Water Agency
- Greater Los Angeles County Vector Control District
- City of Santa Clarita
- Santa Clarita Library

APPROVING AND ACCEPTING NEGOTIATED EXCHANGE OF PROPERTY TAX REVENUES
RESULTING FROM ANNEXATION TO SANTA CLARITA VALLEY SANITATION DISTRICT

"ANNEXATION NO. 1116"

WHEREAS, pursuant to Section 99 and 99.01 of the Revenue and Taxation Code, prior to the effective date of any jurisdictional change which will result in a special district providing a new service, the governing bodies of all local agencies that receive an apportionment of the property tax from the area must determine the amount of property tax revenues from the annual tax increment to be exchanged between the affected agencies and approve and accept the negotiated exchange of property tax revenues by resolution; and

WHEREAS, the governing bodies of the agencies signatory hereto have made determinations of the amount of property tax revenues from the annual tax increments to be exchanged as a result of the annexation to Santa Clarita Valley Sanitation District entitled *Annexation No. 1116*;

NOW, THEREFORE, BE IT RESOLVED AS FOLLOWS:

1. The negotiated exchange of property tax revenues resulting from the annexation of territory to Santa Clarita Valley Sanitation District in the annexation entitled *Annexation No. 1116* is approved and accepted.

2. For each fiscal year commencing on July 1, 2023, or after the effective date of this jurisdictional change, whichever is later, the County Auditor shall transfer to Santa Clarita Valley Sanitation District a total of 0.9071904 percent of the annual tax increment attributable to the land area encompassed within Annexation *No. 1116* for Tax Rate Area 09125 as shown on the attached Worksheet.

3. For each fiscal year commencing on July 1, 2023, or after the effective date of this jurisdictional change, whichever is later, the County Auditor shall transfer to Santa Clarita Valley Sanitation District a total of 0.9104050 percent of the annual tax increment attributable to the land area encompassed within Annexation *No. 1116* for Tax Rate Area 09142 as shown on the attached Worksheet.

4. For each fiscal year commencing on July 1, 2023, or after the effective date of this jurisdictional change, whichever is later, the County Auditor shall transfer to Santa Clarita Valley Sanitation District a total of 0.9612003 percent of the annual tax increment attributable to the land area encompassed within Annexation *No. 1116* for Tax Rate Area 09960 as shown on the attached Worksheet.

5. For each fiscal year commencing on July 1, 2023, or after the effective date of this jurisdictional change, whichever is later, the County Auditor shall transfer to Santa Clarita Valley Sanitation District a total of 0.9068830 percent of the annual tax increment attributable to the land area encompassed within Annexation *No. 1116* for Tax Rate Area 10683 as shown on the attached Worksheet.

6. For each fiscal year commencing on July 1, 2023, or after the effective date of this jurisdictional change, whichever is later, the County Auditor shall transfer to Santa Clarita Valley Sanitation District a total of 0.9610902 percent of the annual tax increment attributable to the land area encompassed within Annexation *No. 1116* for Tax Rate Area 09133 as shown on the attached Worksheet.

7. For each fiscal year commencing on July 1, 2023, or after the effective date of this jurisdictional change, whichever is later, the County Auditor shall transfer to Santa Clarita Valley Sanitation District a total of 0.9610902 percent of the annual tax increment attributable to the land area encompassed within Annexation *No. 1116* for Tax Rate Areas 14220 and 14228 as shown on the attached Worksheet.

8. No additional transfer of property tax revenues shall be made from any other tax agencies to Santa Clarita Valley Sanitation District as a result of annexation entitled Annexation *No. 1116*.

9. No transfer of property tax increments from properties within a community redevelopment project, which are legally committed to a Community Redevelopment Agency, shall be made during the period that such tax increment is legally committed for repayment of the redevelopment project costs.

10. If at any time after the effective date of this resolution, the calculations used herein to determine initial property tax transfers or the data used to perform those calculations are found to be incorrect thus producing an improper or inaccurate property tax transfer, the property tax transfer shall be recalculated and the corrected transfer shall be implemented for the next fiscal year.

The foregoing resolution was adopted by the Board of Supervisors of the County of Los Angeles, the Board of Directors of Santa Clarita Valley Sanitation District of Los Angeles County, and the governing bodies of Antelope Valley Resource Conservation District, Santa Clarita Valley Water Agency, Greater Los Angeles County Vector Control District, City of Santa Clarita, and Santa Clarita Library, signatory hereto.

SANTA CLARITA VALLEY SANITATION
DISTRICT OF LOS ANGELES COUNTY

Chairperson, Board of Directors

ATTEST:

Secretary

Date

(SIGNED IN COUNTERPART)

ANNEXATION TO: STA CLRTA VLY SANIT DIS OF LA CO
 ACCOUNT NUMBER: 067.35
 TRA: 10683
 EFFECTIVE DATE: 07/01/2024
 ANNEXATION NUMBER: SCV-1116 PROJECT NAME: ANNEXATION SCV-1116
 DISTRICT SHARE: 0.017337943

ACCOUNT #	TAXING AGENCY	CURRENT TAX SHARE	PERCENT	PROPOSED DIST SHARE	ALLOCATED SHARE	ADJUSTMENTS	NET SHARE
001.05	LOS ANGELES COUNTY GENERAL	0.216780709	21.6792 %	0.017337943	0.003758543	-0.003847150	0.212933559
001.20	L.A. COUNTY ACCUM CAP OUTLAY	0.000130034	0.0130 %	0.017337943	0.000002254	0.000000000	0.000130034
003.01	L A COUNTY LIBRARY	0.027353154	2.7353 %	0.017337943	0.000474247	-0.000474247	0.026878907
005.25	ROAD DIST # 5	0.007149438	0.7149 %	0.017337943	0.000123956	-0.000123956	0.007025482
007.30	CONSOL. FIRE PRO.DIST.OF L.A.CO.	0.185810671	18.5810 %	0.017337943	0.003221574	-0.003221574	0.182589097
007.31	L A C FIRE-FFW	0.004980607	0.4980 %	0.017337943	0.000086353	0.000000000	0.004980607
030.10	L.A.CO.FL.CON.DR.IMP.DIST.MAINT.	0.002101702	0.2101 %	0.017337943	0.000036439	-0.000036439	0.002065263
030.70	LA CO FLOOD CONTROL MAINT	0.011896725	1.1896 %	0.017337943	0.000206264	-0.000206264	0.011690461
061.80	GREATER L A CO VECTOR CONTROL	0.000322714	0.0322 %	0.017337943	0.000005595	-0.000005595	0.000317119
068.05	ANTELOPE VY RESOURCE CONSER DIST	0.000000000	0.0000 %	0.017337943	0.000000000	0.000000000	0.000000000
302.01	SANTA CLARITA VALLEY WATER-CLWA	0.065080983	6.5080 %	0.017337943	0.001128370	-0.001128370	0.063952613
309.01	SANTA CLARITA VALLEY WATER-NCW	0.001455483	0.1455 %	0.017337943	0.000025235	-0.000025235	0.001430248
400.00	EDUCATIONAL REV AUGMENTATION FD	0.050447601	5.0447 %	0.017337943	0.000874657	EXEMPT	0.050447601
400.01	EDUCATIONAL AUG FD IMPOUND	0.131877650	13.1877 %	0.017337943	0.002286487	EXEMPT	0.131877650
400.15	COUNTY SCHOOL SERVICES	0.001608255	0.1608 %	0.017337943	0.000027883	EXEMPT	0.001608255
400.21	CHILDREN'S INSTIL TUITION FUND	0.003190749	0.3190 %	0.017337943	0.000055321	EXEMPT	0.003190749
665.01	SULPHUR SPRINGS UNION SCHOOL DIS	0.097863142	9.7863 %	0.017337943	0.001696745	EXEMPT	0.097863142
665.06	CO.SCH.SERV.FD.- SULPHUR SPRINGS	0.008390898	0.8390 %	0.017337943	0.000145480	EXEMPT	0.008390898
665.07	DEV.CTR.HDCPD-MINOR-SULPHUR SPGS	0.000927415	0.0927 %	0.017337943	0.000016079	EXEMPT	0.000927415

ANNEXATION NUMBER: SCV-1116

PROJECT NAME: ANNEXATION SCV-1116

TRA: 10683

ACCOUNT #	TAXING AGENCY	CURRENT TAX SHARE	PERCENT	PROPOSED DIST SHARE	ALLOCATED SHARE	ADJUSTMENTS	NET SHARE
757.02	HART WILLIAM S UNION HIGH	0.091793236	9.1793 %	0.017337943	0.001591505	EXEMPT	0.091793236
757.06	CO.SCH.SERV.FD.- HART,WILLIAM S.	0.000382743	0.0382 %	0.017337943	0.000006635	EXEMPT	0.000382743
757.07	HART,WILLIAM S.-ELEM SCHOOL FUND	0.048299187	4.8299 %	0.017337943	0.000837408	EXEMPT	0.048299187
814.04	SANTA CLARITA COMMUNITY COLLEGE	0.042156904	4.2156 %	0.017337943	0.000730913	EXEMPT	0.042156904
***067.35	STA CLRTA VLY SANIT DIS OF LA CO	0.000000000	0.0000 %	0.017337943	0.000000000	0.000000000	0.009068830
TOTAL:		1.000000000	100.0000 %		0.017337943	-0.009068830	1.000000000

ANNEXATION TO: STA CLRTA VLY SANIT DIS OF LA CO
 ACCOUNT NUMBER: 067.35
 TRA: 09142
 EFFECTIVE DATE: 07/01/2024
 ANNEXATION NUMBER: SCV-1116 PROJECT NAME: ANNEXATION SCV-1116
 DISTRICT SHARE: 0.017337943

ACCOUNT #	TAXING AGENCY	CURRENT TAX SHARE	PERCENT	PROPOSED DIST SHARE	ALLOCATED SHARE	ADJUSTMENTS	NET SHARE
001.05	LOS ANGELES COUNTY GENERAL	0.181560218	18.1574 %	0.017337943	0.003147894	-0.003222274	0.178337944
001.20	L.A. COUNTY ACCUM CAP OUTLAY	0.000117520	0.0117 %	0.017337943	0.000002037	0.000000000	0.000117520
003.01	L A COUNTY LIBRARY	0.025304385	2.5304 %	0.017337943	0.000438725	-0.000438725	0.024865660
005.25	ROAD DIST # 5	0.006707708	0.6707 %	0.017337943	0.000116297	-0.000116297	0.006591411
007.30	CONSOL. FIRE PRO.DIST.OF L.A.CO.	0.185810671	18.5810 %	0.017337943	0.003221574	-0.003221574	0.182589097
007.31	L A C FIRE-FFW	0.004172531	0.4172 %	0.017337943	0.000072343	0.000000000	0.004172531
030.10	L.A.CO.FL.CON.DR.IMP.DIST.MAINT.	0.001908680	0.1908 %	0.017337943	0.000033092	-0.000033092	0.001875588
030.70	LA CO FLOOD CONTROL MAINT	0.010823529	1.0823 %	0.017337943	0.000187657	-0.000187657	0.010635872
061.80	GREATER L A CO VECTOR CONTROL	0.000322714	0.0322 %	0.017337943	0.000005595	-0.000005595	0.000317119
068.05	ANTELOPE VY RESOURCE CONSER DIST	0.000000000	0.0000 %	0.017337943	0.000000000	0.000000000	0.000000000
302.01	SANTA CLARITA VALLEY WATER-CLWA	0.061038339	6.1038 %	0.017337943	0.001058279	-0.001058279	0.059980060
309.01	SANTA CLARITA VALLEY WATER-NCW	0.001295737	0.1295 %	0.017337943	0.000022465	-0.000022465	0.001273272
309.02	STA CLRTA VALLEY WTR-NCW02S	0.024497968	2.4497 %	0.017337943	0.000424744	-0.000424744	0.024073224
309.03	STA CLRTA VALLEY WTR-NCW02W	0.021533616	2.1533 %	0.017337943	0.000373348	-0.000373348	0.021160268
400.00	EDUCATIONAL REV AUGMENTATION FD	0.066692841	6.6692 %	0.017337943	0.001156316	EXEMPT	0.066692841
400.01	EDUCATIONAL AUG FD IMPOUND	0.131877650	13.1877 %	0.017337943	0.002286487	EXEMPT	0.131877650
400.15	COUNTY SCHOOL SERVICES	0.001509686	0.1509 %	0.017337943	0.000026174	EXEMPT	0.001509686
400.21	CHILDREN'S INSTIL TUITION FUND	0.002992253	0.2992 %	0.017337943	0.000051879	EXEMPT	0.002992253
665.01	SULPHUR SPRINGS UNION SCHOOL DIS	0.091792549	9.1792 %	0.017337943	0.001591493	EXEMPT	0.091792549

ANNEXATION NUMBER: SCV-1116

PROJECT NAME: ANNEXATION SCV-1116

TRA: 09142

ACCOUNT #	TAXING AGENCY	CURRENT TAX SHARE	PERCENT	PROPOSED DIST SHARE	ALLOCATED SHARE	ADJUSTMENTS	NET SHARE
665.06	CO.SCH.SERV.FD.- SULPHUR SPRINGS	0.007873873	0.7873 %	0.017337943	0.000136516	EXEMPT	0.007873873
665.07	DEV.CTR.HDCPD-MINOR-SULPHUR SPGS	0.000867844	0.0867 %	0.017337943	0.000015046	EXEMPT	0.000867844
757.02	HART WILLIAM S UNION HIGH	0.086097325	8.6097 %	0.017337943	0.001492750	EXEMPT	0.086097325
757.06	CO.SCH.SERV.FD.- HART,WILLIAM S.	0.000361602	0.0361 %	0.017337943	0.000006269	EXEMPT	0.000361602
757.07	HART,WILLIAM S.-ELEM SCHOOL FUND	0.045299632	4.5299 %	0.017337943	0.000785402	EXEMPT	0.045299632
814.04	SANTA CLARITA COMMUNITY COLLEGE	0.039541129	3.9541 %	0.017337943	0.000685561	EXEMPT	0.039541129
***067.35	STA CLRTA VLY SANIT DIS OF LA CO	0.000000000	0.0000 %	0.017337943	0.000000000	0.000000000	0.009104050
TOTAL:		1.000000000	100.0000 %		0.017337943	-0.009104050	1.000000000

ANNEXATION TO: STA CLRITA VLY SANIT DIS OF LA CO
 ACCOUNT NUMBER: 067.35
 TRA: 09125
 EFFECTIVE DATE: 07/01/2024
 ANNEXATION NUMBER: SCV-1116 PROJECT NAME: ANNEXATION SCV-1116
 DISTRICT SHARE: 0.017337943

ACCOUNT #	TAXING AGENCY	CURRENT TAX SHARE	PERCENT	PROPOSED DIST SHARE	ALLOCATED SHARE	ADJUSTMENTS	NET SHARE
001.05	LOS ANGELES COUNTY GENERAL	0.217269495	21.7280 %	0.017337943	0.003767018	-0.003855819	0.213413676
001.20	L.A. COUNTY ACCUM CAP OUTLAY	0.000130034	0.0130 %	0.017337943	0.000002254	0.000000000	0.000130034
003.01	L A COUNTY LIBRARY	0.027353154	2.7353 %	0.017337943	0.000474247	-0.000474247	0.026878907
005.25	ROAD DIST # 5	0.007149438	0.7149 %	0.017337943	0.000123956	-0.000123956	0.007025482
007.30	CONSOL. FIRE PRO.DIST.OF L.A.CO.	0.185810671	18.5810 %	0.017337943	0.003221574	-0.003221574	0.182589097
007.31	L A C FIRE-FFW	0.004991821	0.4991 %	0.017337943	0.000086547	0.000000000	0.004991821
030.10	L.A.CO.FL.CON.DR.IMP.DIST.MAINT.	0.002101702	0.2101 %	0.017337943	0.000036439	-0.000036439	0.002065263
030.70	LA CO FLOOD CONTROL MAINT	0.011896725	1.1896 %	0.017337943	0.000206264	-0.000206264	0.011690461
068.05	ANTELOPE VY RESOURCE CONSER DIST	0.000000000	0.0000 %	0.017337943	0.000000000	0.000000000	0.000000000
302.01	SANTA CLARITA VALLEY WATER-CLWA	0.065080983	6.5080 %	0.017337943	0.001128370	-0.001128370	0.063952613
309.01	SANTA CLARITA VALLEY WATER-NCW	0.001455483	0.1455 %	0.017337943	0.000025235	-0.000025235	0.001430248
400.00	EDUCATIONAL REV AUGMENTATION FD	0.050270315	5.0270 %	0.017337943	0.000871583	EXEMPT	0.050270315
400.01	EDUCATIONAL AUG FD IMPOUND	0.131877650	13.1877 %	0.017337943	0.002286487	EXEMPT	0.131877650
400.15	COUNTY SCHOOL SERVICES	0.001608255	0.1608 %	0.017337943	0.000027883	EXEMPT	0.001608255
400.21	CHILDREN'S INSTIL TUITION FUND	0.003190749	0.3190 %	0.017337943	0.000055321	EXEMPT	0.003190749
665.01	SULPHUR SPRINGS UNION SCHOOL DIS	0.097863142	9.7863 %	0.017337943	0.001696745	EXEMPT	0.097863142
665.06	CO.SCH.SERV.FD.- SULPHUR SPRINGS	0.008390898	0.8390 %	0.017337943	0.000145480	EXEMPT	0.008390898
665.07	DEV.CTR.HDCPD-MINOR-SULPHUR SPGS	0.000927415	0.0927 %	0.017337943	0.000016079	EXEMPT	0.000927415
757.02	HART WILLIAM S UNION HIGH	0.091793236	9.1793 %	0.017337943	0.001591505	EXEMPT	0.091793236

ANNEXATION NUMBER: SCV-1116

PROJECT NAME: ANNEXATION SCV-1116

TRA: 09125

ACCOUNT #	TAXING AGENCY	CURRENT TAX SHARE	PERCENT	PROPOSED DIST SHARE	ALLOCATED SHARE	ADJUSTMENTS	NET SHARE
757.06	CO.SCH.SERV.FD.- HART,WILLIAM S.	0.000382743	0.0382 %	0.017337943	0.000006635	EXEMPT	0.000382743
757.07	HART,WILLIAM S.-ELEM SCHOOL FUND	0.048299187	4.8299 %	0.017337943	0.000837408	EXEMPT	0.048299187
814.04	SANTA CLARITA COMMUNITY COLLEGE	0.042156904	4.2156 %	0.017337943	0.000730913	EXEMPT	0.042156904
***067.35	STA CLRTA VLY SANIT DIS OF LA CO	0.000000000	0.0000 %	0.017337943	0.000000000	0.000000000	0.009071904
TOTAL:		1.000000000	100.0000 %		0.017337943	-0.009071904	1.000000000

ANNEXATION TO: STA CLRTA VLY SANIT DIS OF LA CO
 ACCOUNT NUMBER: 067.35
 TRA: 09133
 EFFECTIVE DATE: 07/01/2024
 ANNEXATION NUMBER: SCV-1116 PROJECT NAME: ANNEXATION SCV-1116
 DISTRICT SHARE: 0.017337943

ACCOUNT #	TAXING AGENCY	CURRENT TAX SHARE	PERCENT	PROPOSED DIST SHARE	ALLOCATED SHARE	ADJUSTMENTS	NET SHARE
001.05	LOS ANGELES COUNTY GENERAL	0.266036622	26.6047 %	0.017337943	0.004612539	-0.004720285	0.261316337
001.20	L.A. COUNTY ACCUM CAP OUTLAY	0.000103813	0.0103 %	0.017337943	0.000001799	0.000000000	0.000103813
003.01	L A COUNTY LIBRARY	0.020389298	2.0389 %	0.017337943	0.000353508	-0.000353508	0.020035790
005.25	ROAD DIST # 5	0.005649594	0.5649 %	0.017337943	0.000097952	-0.000097952	0.005551642
007.30	CONSOL. FIRE PRO.DIST.OF L.A.CO.	0.157467408	15.7467 %	0.017337943	0.002730160	-0.002730160	0.154737248
007.31	L A C FIRE-FFW	0.006110702	0.6110 %	0.017337943	0.000105947	0.000000000	0.006110702
030.10	L.A.CO.FL.CON.DR.IMP.DIST.MAINT.	0.001461574	0.1461 %	0.017337943	0.000025340	-0.000025340	0.001436234
030.70	LA CO FLOOD CONTROL MAINT	0.008270525	0.8270 %	0.017337943	0.000143393	-0.000143393	0.008127132
061.80	GREATER L A CO VECTOR CONTROL	0.000322714	0.0322 %	0.017337943	0.000005595	-0.000005595	0.000317119
068.05	ANTELOPE VY RESOURCE CONSER DIST	0.000000000	0.0000 %	0.017337943	0.000000000	0.000000000	0.000000000
302.01	SANTA CLARITA VALLEY WATER-CLWA	0.051409120	5.1409 %	0.017337943	0.000891328	-0.000891328	0.050517792
309.01	SANTA CLARITA VALLEY WATER-NCW	0.000904060	0.0904 %	0.017337943	0.000015674	-0.000015674	0.000888386
309.02	STA CLRTA VALLEY WTR-NCW02S	0.019398715	1.9398 %	0.017337943	0.000336333	-0.000336333	0.019062382
309.03	STA CLRTA VALLEY WTR-NCW02W	0.016803292	1.6803 %	0.017337943	0.000291334	-0.000291334	0.016511958
400.00	EDUCATIONAL REV AUGMENTATION FD	0.081074257	8.1074 %	0.017337943	0.001405660	EXEMPT	0.081074257
400.01	EDUCATIONAL AUG FD IMPOUND	0.131877650	13.1877 %	0.017337943	0.002286487	EXEMPT	0.131877650
400.15	COUNTY SCHOOL SERVICES	0.001273071	0.1273 %	0.017337943	0.000022072	EXEMPT	0.001273071
400.21	CHILDREN'S INSTIL TUITION FUND	0.002518823	0.2518 %	0.017337943	0.000043671	EXEMPT	0.002518823
665.01	SULPHUR SPRINGS UNION SCHOOL DIS	0.077302182	7.7302 %	0.017337943	0.001340260	EXEMPT	0.077302182

ANNEXATION NUMBER: SCV-1116

PROJECT NAME: ANNEXATION SCV-1116

TRA: 09133

ACCOUNT #	TAXING AGENCY	CURRENT TAX SHARE	PERCENT	PROPOSED DIST SHARE	ALLOCATED SHARE	ADJUSTMENTS	NET SHARE
665.06	CO.SCH.SERV.FD.- SULPHUR SPRINGS	0.006627619	0.6627 %	0.017337943	0.000114909	EXEMPT	0.006627619
665.07	DEV.CTR.HDCPD-MINOR-SULPHUR SPGS	0.000732152	0.0732 %	0.017337943	0.000012694	EXEMPT	0.000732152
757.02	HART WILLIAM S UNION HIGH	0.072510409	7.2510 %	0.017337943	0.001257181	EXEMPT	0.072510409
757.06	CO.SCH.SERV.FD.- HART,WILLIAM S.	0.000300510	0.0300 %	0.017337943	0.000005210	EXEMPT	0.000300510
757.07	HART,WILLIAM S.-ELEM SCHOOL FUND	0.038153883	3.8153 %	0.017337943	0.000661509	EXEMPT	0.038153883
814.04	SANTA CLARITA COMMUNITY COLLEGE	0.033302007	3.3302 %	0.017337943	0.000577388	EXEMPT	0.033302007
***067.35	STA CLRTA VLY SANIT DIS OF LA CO	0.000000000	0.0000 %	0.017337943	0.000000000	0.000000000	0.009610902
TOTAL:		1.000000000	100.0000 %		0.017337943	-0.009610902	1.000000000

ANNEXATION TO: STA CLRTA VLY SANIT DIS OF LA CO
 ACCOUNT NUMBER: 067.35
 TRA: 09960
 EFFECTIVE DATE: 07/01/2024
 ANNEXATION NUMBER: SCV-1116 PROJECT NAME: ANNEXATION SCV-1116
 DISTRICT SHARE: 0.017337943

ACCOUNT #	TAXING AGENCY	CURRENT TAX SHARE	PERCENT	PROPOSED DIST SHARE	ALLOCATED SHARE	ADJUSTMENTS	NET SHARE
001.05	LOS ANGELES COUNTY GENERAL	0.266150036	26.6160 %	0.017337943	0.004614503	-0.004722262	0.261427774
001.20	L.A. COUNTY ACCUM CAP OUTLAY	0.000101942	0.0101 %	0.017337943	0.000001767	0.000000000	0.000101942
003.01	L A COUNTY LIBRARY	0.020380260	2.0380 %	0.017337943	0.000353351	-0.000353351	0.020026909
005.25	ROAD DIST # 5	0.005657781	0.5657 %	0.017337943	0.000098094	-0.000098094	0.005559687
007.30	CONSOL. FIRE PRO.DIST.OF L.A.CO.	0.157423926	15.7423 %	0.017337943	0.002729407	-0.002729407	0.154694519
007.31	L A C FIRE-FFW	0.006113304	0.6113 %	0.017337943	0.000105992	0.000000000	0.006113304
030.10	L.A.CO.FL.CON.DR.IMP.DIST.MAINT.	0.001473150	0.1473 %	0.017337943	0.000025541	-0.000025541	0.001447609
030.70	LA CO FLOOD CONTROL MAINT	0.008293047	0.8293 %	0.017337943	0.000143784	-0.000143784	0.008149263
061.80	GREATER L A CO VECTOR CONTROL	0.000322714	0.0322 %	0.017337943	0.000005595	-0.000005595	0.000317119
068.05	ANTELOPE VY RESOURCE CONSER DIST	0.000000000	0.0000 %	0.017337943	0.000000000	0.000000000	0.000000000
302.01	SANTA CLARITA VALLEY WATER-CLWA	0.051404251	5.1404 %	0.017337943	0.000891243	-0.000891243	0.050513008
309.01	SANTA CLARITA VALLEY WATER-NCW	0.000892132	0.0892 %	0.017337943	0.000015467	-0.000015467	0.000876665
309.02	STA CLRTA VALLEY WTR-NCW02S	0.019381898	1.9381 %	0.017337943	0.000336042	-0.000336042	0.019045856
309.03	STA CLRTA VALLEY WTR-NCW02W	0.016796533	1.6796 %	0.017337943	0.000291217	-0.000291217	0.016505316
400.00	EDUCATIONAL REV AUGMENTATION FD	0.081074257	8.1074 %	0.017337943	0.001405660	EXEMPT	0.081074257
400.01	EDUCATIONAL AUG FD IMPOUND	0.131877650	13.1877 %	0.017337943	0.002286487	EXEMPT	0.131877650
400.15	COUNTY SCHOOL SERVICES	0.001274275	0.1274 %	0.017337943	0.000022093	EXEMPT	0.001274275
400.21	CHILDREN'S INSTIL TUITION FUND	0.002523064	0.2523 %	0.017337943	0.000043744	EXEMPT	0.002523064
665.01	SULPHUR SPRINGS UNION SCHOOL DIS	0.077272032	7.7272 %	0.017337943	0.001339738	EXEMPT	0.077272032

ANNEXATION NUMBER: SCV-1116

PROJECT NAME: ANNEXATION SCV-1116

TRA: 09960

ACCOUNT #	TAXING AGENCY	CURRENT TAX SHARE	PERCENT	PROPOSED DIST SHARE	ALLOCATED SHARE	ADJUSTMENTS	NET SHARE
665.06	CO.SCH.SERV.FD.- SULPHUR SPRINGS	0.006626230	0.6626 %	0.017337943	0.000114885	EXEMPT	0.006626230
665.07	DEV.CTR.HDCPD-MINOR-SULPHUR SPGS	0.000739079	0.0739 %	0.017337943	0.000012814	EXEMPT	0.000739079
757.02	HART WILLIAM S UNION HIGH	0.072480758	7.2480 %	0.017337943	0.001256667	EXEMPT	0.072480758
757.06	CO.SCH.SERV.FD.- HART,WILLIAM S.	0.000305826	0.0305 %	0.017337943	0.000005302	EXEMPT	0.000305826
757.07	HART,WILLIAM S.-ELEM SCHOOL FUND	0.038151792	3.8151 %	0.017337943	0.000661473	EXEMPT	0.038151792
814.04	SANTA CLARITA COMMUNITY COLLEGE	0.033284063	3.3284 %	0.017337943	0.000577077	EXEMPT	0.033284063
***067.35	STA CLRTA VLY SANIT DIS OF LA CO	0.000000000	0.0000 %	0.017337943	0.000000000	0.000000000	0.009612003
TOTAL:		1.000000000	100.0000 %		0.017337943	-0.009612003	1.000000000

ANNEXATION TO: STA CLRTA VLY SANIT DIS OF LA CO
 ACCOUNT NUMBER: 067.35
 TRA: 14220
 EFFECTIVE DATE: 07/01/2024
 ANNEXATION NUMBER: SCV-1116 PROJECT NAME: ANNEXATION SCV-1116
 DISTRICT SHARE: 0.017337943

ACCOUNT #	TAXING AGENCY	CURRENT TAX SHARE	PERCENT	PROPOSED DIST SHARE	ALLOCATED SHARE	ADJUSTMENTS	NET SHARE
001.05	LOS ANGELES COUNTY GENERAL	0.219426669	21.9437 %	0.017337943	0.003804417	-0.003912163	0.215514506
001.20	L.A. COUNTY ACCUM CAP OUTLAY	0.000103813	0.0103 %	0.017337943	0.000001799	0.000000000	0.000103813
007.30	CONSOL. FIRE PRO.DIST.OF L.A.CO.	0.153473805	15.3473 %	0.017337943	0.002660920	-0.002660920	0.150812885
007.31	L A C FIRE-FFW	0.006110702	0.6110 %	0.017337943	0.000105947	0.000000000	0.006110702
030.10	L.A.CO.FL.CON.DR.IMP.DIST.MAINT.	0.001461574	0.1461 %	0.017337943	0.000025340	-0.000025340	0.001436234
030.70	LA CO FLOOD CONTROL MAINT	0.008051960	0.8051 %	0.017337943	0.000139604	-0.000139604	0.007912356
061.80	GREATER L A CO VECTOR CONTROL	0.000322714	0.0322 %	0.017337943	0.000005595	-0.000005595	0.000317119
068.05	ANTELOPE VY RESOURCE CONSER DIST	0.000000000	0.0000 %	0.017337943	0.000000000	0.000000000	0.000000000
249.01	CITY-SANTA CLARITA TD #1	0.057000000	5.7000 %	0.017337943	0.000988262	-0.000988262	0.056011738
249.56	CITY-SANTA CLARITA LIBRARY	0.019861013	1.9861 %	0.017337943	0.000344349	-0.000344349	0.019516664
302.01	SANTA CLARITA VALLEY WATER-CLWA	0.051409120	5.1409 %	0.017337943	0.000891328	-0.000891328	0.050517792
309.01	SANTA CLARITA VALLEY WATER-NCW	0.000904060	0.0904 %	0.017337943	0.000015674	-0.000015674	0.000888386
309.02	STA CLRTA VALLEY WTR-NCW02S	0.019398715	1.9398 %	0.017337943	0.000336333	-0.000336333	0.019062382
309.03	STA CLRTA VALLEY WTR-NCW02W	0.016803292	1.6803 %	0.017337943	0.000291334	-0.000291334	0.016511958
400.00	EDUCATIONAL REV AUGMENTATION FD	0.081074257	8.1074 %	0.017337943	0.001405660	EXEMPT	0.081074257
400.01	EDUCATIONAL AUG FD IMPOUND	0.131877650	13.1877 %	0.017337943	0.002286487	EXEMPT	0.131877650
400.15	COUNTY SCHOOL SERVICES	0.001273071	0.1273 %	0.017337943	0.000022072	EXEMPT	0.001273071
400.21	CHILDREN'S INSTIL TUITION FUND	0.002518823	0.2518 %	0.017337943	0.000043671	EXEMPT	0.002518823
665.01	SULPHUR SPRINGS UNION SCHOOL DIS	0.077302182	7.7302 %	0.017337943	0.001340260	EXEMPT	0.077302182

ANNEXATION NUMBER: SCV-1116

PROJECT NAME: ANNEXATION SCV-1116

TRA: 14220

ACCOUNT #	TAXING AGENCY	CURRENT TAX SHARE	PERCENT	PROPOSED DIST SHARE	ALLOCATED SHARE	ADJUSTMENTS	NET SHARE
665.06	CO.SCH.SERV.FD.- SULPHUR SPRINGS	0.006627619	0.6627 %	0.017337943	0.000114909	EXEMPT	0.006627619
665.07	DEV.CTR.HDCPD-MINOR-SULPHUR SPGS	0.000732152	0.0732 %	0.017337943	0.000012694	EXEMPT	0.000732152
757.02	HART WILLIAM S UNION HIGH	0.072510409	7.2510 %	0.017337943	0.001257181	EXEMPT	0.072510409
757.06	CO.SCH.SERV.FD.- HART,WILLIAM S.	0.000300510	0.0300 %	0.017337943	0.000005210	EXEMPT	0.000300510
757.07	HART,WILLIAM S.-ELEM SCHOOL FUND	0.038153883	3.8153 %	0.017337943	0.000661509	EXEMPT	0.038153883
814.04	SANTA CLARITA COMMUNITY COLLEGE	0.033302007	3.3302 %	0.017337943	0.000577388	EXEMPT	0.033302007
***067.35	STA CLRTA VLY SANIT DIS OF LA CO	0.000000000	0.0000 %	0.017337943	0.000000000	0.000000000	0.009610902
TOTAL:		1.000000000	100.0000 %		0.017337943	-0.009610902	1.000000000

ANNEXATION TO: STA CLRTA VLY SANIT DIS OF LA CO
 ACCOUNT NUMBER: 067.35
 TRA: 14228
 EFFECTIVE DATE: 07/01/2024
 ANNEXATION NUMBER: SCV-1116 PROJECT NAME: ANNEXATION SCV-1116
 DISTRICT SHARE: 0.017337943

ACCOUNT #	TAXING AGENCY	CURRENT TAX SHARE	PERCENT	PROPOSED DIST SHARE	ALLOCATED SHARE	ADJUSTMENTS	NET SHARE
001.05	LOS ANGELES COUNTY GENERAL	0.214686216	21.4696 %	0.017337943	0.003722229	-0.003829975	0.210856241
001.20	L.A. COUNTY ACCUM CAP OUTLAY	0.000103813	0.0103 %	0.017337943	0.000001799	0.000000000	0.000103813
007.30	CONSOL. FIRE PRO.DIST.OF L.A.CO.	0.157467408	15.7467 %	0.017337943	0.002730160	-0.002730160	0.154737248
007.31	L A C FIRE-FFW	0.006110702	0.6110 %	0.017337943	0.000105947	0.000000000	0.006110702
030.10	L.A.CO.FL.CON.DR.IMP.DIST.MAINT.	0.001461574	0.1461 %	0.017337943	0.000025340	-0.000025340	0.001436234
030.70	LA CO FLOOD CONTROL MAINT	0.008270525	0.8270 %	0.017337943	0.000143393	-0.000143393	0.008127132
061.80	GREATER L A CO VECTOR CONTROL	0.000322714	0.0322 %	0.017337943	0.000005595	-0.000005595	0.000317119
068.05	ANTELOPE VY RESOURCE CONSER DIST	0.000000000	0.0000 %	0.017337943	0.000000000	0.000000000	0.000000000
249.01	CITY-SANTA CLARITA TD #1	0.057000000	5.7000 %	0.017337943	0.000988262	-0.000988262	0.056011738
249.56	CITY-SANTA CLARITA LIBRARY	0.020389298	2.0389 %	0.017337943	0.000353508	-0.000353508	0.020035790
302.01	SANTA CLARITA VALLEY WATER-CLWA	0.051409120	5.1409 %	0.017337943	0.000891328	-0.000891328	0.050517792
309.01	SANTA CLARITA VALLEY WATER-NCW	0.000904060	0.0904 %	0.017337943	0.000015674	-0.000015674	0.000888386
309.02	STA CLRTA VALLEY WTR-NCW02S	0.019398715	1.9398 %	0.017337943	0.000336333	-0.000336333	0.019062382
309.03	STA CLRTA VALLEY WTR-NCW02W	0.016803292	1.6803 %	0.017337943	0.000291334	-0.000291334	0.016511958
400.00	EDUCATIONAL REV AUGMENTATION FD	0.081074257	8.1074 %	0.017337943	0.001405660	EXEMPT	0.081074257
400.01	EDUCATIONAL AUG FD IMPOUND	0.131877650	13.1877 %	0.017337943	0.002286487	EXEMPT	0.131877650
400.15	COUNTY SCHOOL SERVICES	0.001273071	0.1273 %	0.017337943	0.000022072	EXEMPT	0.001273071
400.21	CHILDREN'S INSTIL TUITION FUND	0.002518823	0.2518 %	0.017337943	0.000043671	EXEMPT	0.002518823
665.01	SULPHUR SPRINGS UNION SCHOOL DIS	0.077302182	7.7302 %	0.017337943	0.001340260	EXEMPT	0.077302182

ANNEXATION NUMBER: SCV-1116

PROJECT NAME: ANNEXATION SCV-1116

TRA: 14228

ACCOUNT #	TAXING AGENCY	CURRENT TAX SHARE	PERCENT	PROPOSED DIST SHARE	ALLOCATED SHARE	ADJUSTMENTS	NET SHARE
665.06	CO.SCH.SERV.FD.- SULPHUR SPRINGS	0.006627619	0.6627 %	0.017337943	0.000114909	EXEMPT	0.006627619
665.07	DEV.CTR.HDCPD-MINOR-SULPHUR SPGS	0.000732152	0.0732 %	0.017337943	0.000012694	EXEMPT	0.000732152
757.02	HART WILLIAM S UNION HIGH	0.072510409	7.2510 %	0.017337943	0.001257181	EXEMPT	0.072510409
757.06	CO.SCH.SERV.FD.- HART,WILLIAM S.	0.000300510	0.0300 %	0.017337943	0.000005210	EXEMPT	0.000300510
757.07	HART,WILLIAM S.-ELEM SCHOOL FUND	0.038153883	3.8153 %	0.017337943	0.000661509	EXEMPT	0.038153883
814.04	SANTA CLARITA COMMUNITY COLLEGE	0.033302007	3.3302 %	0.017337943	0.000577388	EXEMPT	0.033302007
***067.35	STA CLRTA VLY SANIT DIS OF LA CO	0.000000000	0.0000 %	0.017337943	0.000000000	0.000000000	0.009610902
TOTAL:		1.000000000	100.0000 %		0.017337943	-0.009610902	1.000000000

SANTA CLARITA VALLEY SANITATION DISTRICT OF LOS ANGELES COUNTY

PROPOSED ANNEXATION NO. 1130

AGENDA DATE: Resolution Making Application to LAFCO February 20, 2024

LOCATION: Located north of State Route 14, south of Soledad Canyon Road and west of Lost Canyon Road, all within the City of Santa Clarita, as shown on the attached map.

PROCESSING FEES:	District	\$	1,950.00
	Local Agency Formation Commission		5,600.00
	State Board of Equalization		<u>350.00</u>
	Total:	\$	<u>7,900.00</u>

DESCRIPTION & REMARKS: The annexation consists of one proposed shopping center.

NOTICE OF FINDING/CERTIFICATE OF FILING

ANNEXATION NO. 1130 TO SANTA CLARITA VALLEY SANITATION DISTRICT

The annexation consists of one proposed shopping center.

1. **BASED UPON REVIEW AND STUDY, I FIND AND CERTIFY THAT:**

- The annexation is **exempt** from the provisions of the California Environmental Quality Act, pursuant to the State CEQA Guidelines,

Section:

Reason:

- The **Mitigated Negative Declaration** is adequate for consideration of the annexation.

- The **Environmental Impact Report** is acceptable for consideration of the annexation.

ISSUED BY:

- Los Angeles County Department of Regional Planning

- City of Santa Clarita

2. The subject annexation has been set for consideration before the Board of Directors of Santa Clarita Valley Sanitation District at their meeting to be held on February 20, 2024, at the time and place as provided for the meeting of said date.
3. The subject annexation and all related documents are on file in the office of the Chief Engineer and General Manager, Los Angeles County Sanitation Districts, 1955 Workman Mill Road, (P.O. Box 4998) Whittier, California and may be examined by any interested person for further particulars. Telephone: (562) 908-4288, extension 2708.



Stan Pegadiotes
Division Engineer
Facilities Planning Department

183
02-19-1987

194
01-17-1989

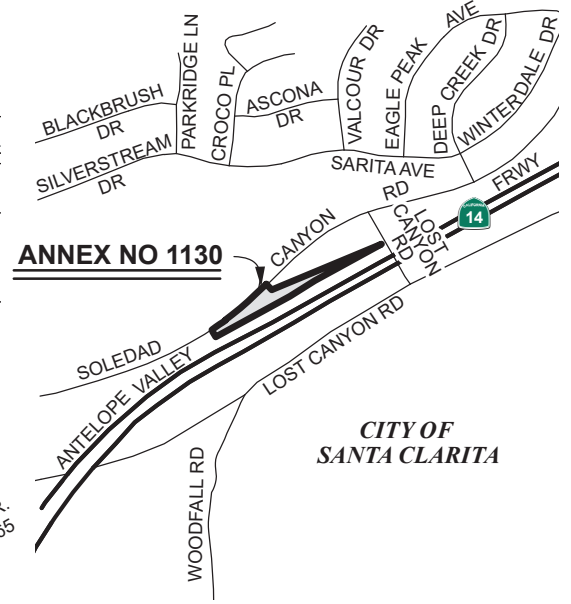
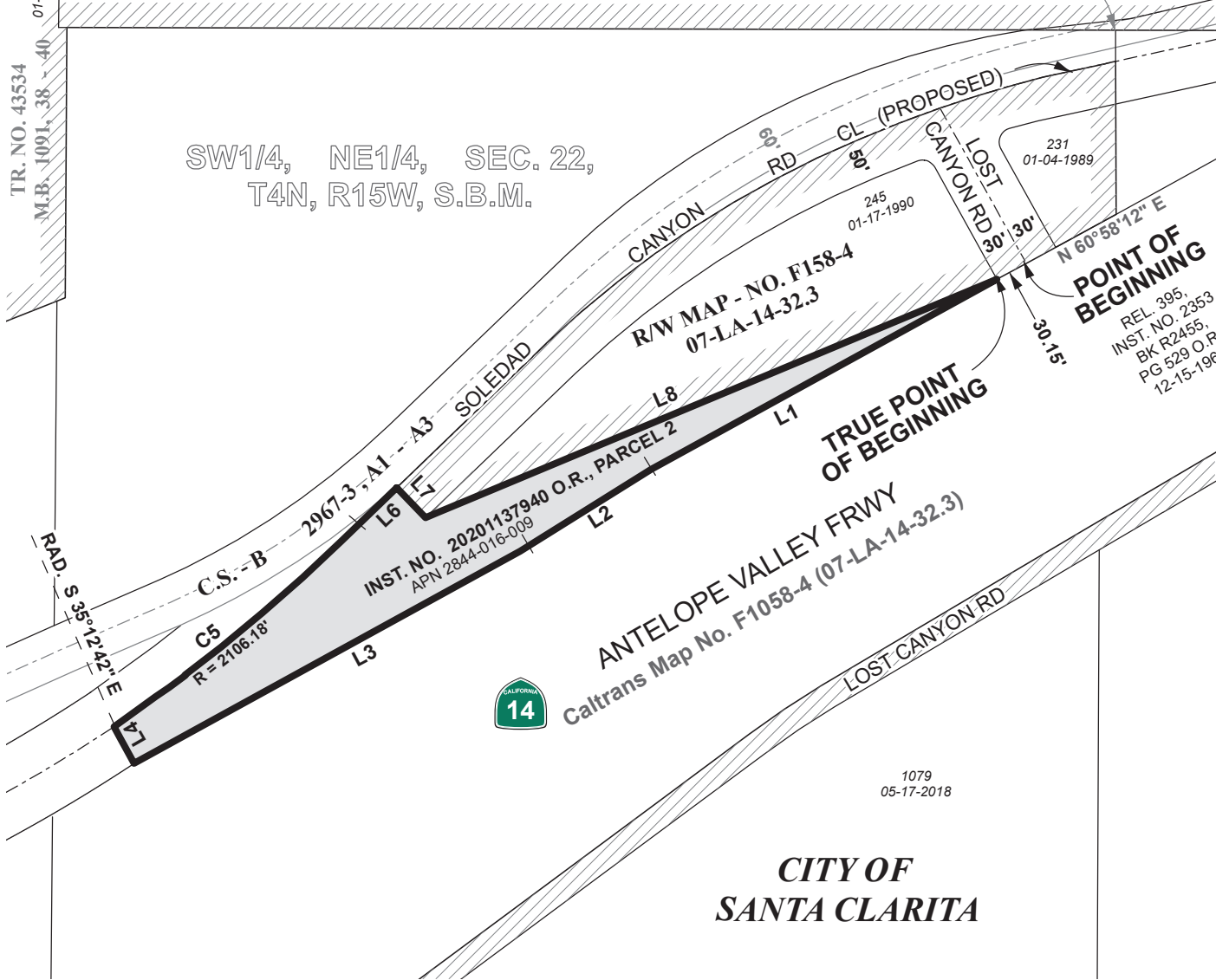
TR. NO. 43534
M.B. 1091, 38 & 40

TR. NO. 39750,
M.B. 953, 14 - 17

21
08-16-1966

NE COR., SW1/4,
NE1/4, SEC. 22,
T4W, 4152, W.B.M.

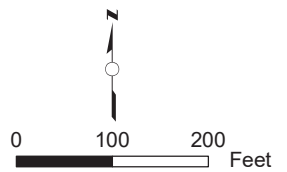
SW1/4, NE1/4, SEC. 22,
T4N, R15W, S.B.M.



VICINITY MAP
NO SCALE

COURSE DATA

L1	S 60°58'12" W	470.00'
L2	S 58°06'27" W	200.25'
L3	S 60°58'12" W	481.28'
L4	N 35°12'42" W	50.00'
C5	R = 2106.18 L = 324.41' D = 08°49'30"	
L6	N 45°57'48" E	92.36'
L7	S 44°02'12" E	50.00'
L8	N 66°46'56" E	739.75'



**CITY OF
SANTA CLARITA**

1079
05-17-2018

**"FOR TAX ASSESSMENT
PURPOSES ONLY"**

LA County Assessor Landbase,
CAMS Centerline, DPW City boundary
LA County Sanitation Districts:
AnnexationLayer and District Layer

Annexation No. 1130 shown thus	
Boundary of Santa Clarita Valley Sanitation District	
Prior to Annexation No. 1130 shown thus	
Prior Annexations shown thus	ANNEX. NO. (RECORDING DATE)
Area of Annexation	1.499 Acres

SANTA CLARITA VALLEY
SANITATION DISTRICT
OF LOS ANGELES COUNTY, CA
OFFICE OF CHIEF ENGINEER
ROBERT C. FERRANTE
CHIEF ENGINEER & GENERAL MANAGER

ANNEXATION NO. 1130
TO
SANTA CLARITA VALLEY
SANITATION DISTRICT

Recorded:

JOINT RESOLUTION OF THE BOARD OF SUPERVISORS OF THE COUNTY OF LOS ANGELES
ACTING IN BEHALF OF

Los Angeles County General Fund

Los Angeles County Consolidated Fire Protection District

Los Angeles County Flood Control

THE BOARD OF DIRECTORS OF SANTA CLARITA VALLEY SANITATION DISTRICT OF LOS
ANGELES COUNTY, AND THE GOVERNING BODIES OF

Greater Los Angeles County Vector Control District

Antelope Valley Resource Conservation District

City of Santa Clarita

Santa Clarita Library

Santa Clarita Valley Water Agency

APPROVING AND ACCEPTING NEGOTIATED EXCHANGE OF PROPERTY TAX REVENUES
RESULTING FROM ANNEXATION TO SANTA CLARITA VALLEY SANITATION DISTRICT

"ANNEXATION NO. 1130"

WHEREAS, pursuant to Section 99 and 99.01 of the Revenue and Taxation Code, prior to the effective date of any jurisdictional change which will result in a special district providing a new service, the governing bodies of all local agencies that receive an apportionment of the property tax from the area must determine the amount of property tax revenues from the annual tax increment to be exchanged between the affected agencies and approve and accept the negotiated exchange of property tax revenues by resolution; and

WHEREAS, the governing bodies of the agencies signatory hereto have made determinations of the amount of property tax revenues from the annual tax increments to be exchanged as a result of the annexation to Santa Clarita Valley Sanitation District entitled *Annexation No. 1130*;

NOW, THEREFORE, BE IT RESOLVED AS FOLLOWS:

1. The negotiated exchange of property tax revenues resulting from the annexation of territory to Santa Clarita Valley Sanitation District in the annexation entitled *Annexation No. 1130* is approved and accepted.

2. For each fiscal year commencing on July 1, 2023, or after the effective date of this jurisdictional change, whichever is later, the County Auditor shall transfer to Santa Clarita Valley Sanitation District a total of 0.9413917 percent of the annual tax increment attributable to the land area encompassed within *Annexation No. 1130* as shown on the attached Worksheet.

3. No additional transfer of property tax revenues shall be made from any other tax agencies to Santa Clarita Valley Sanitation District as a result of annexation entitled *Annexation No. 1130*.

4. No transfer of property tax increments from properties within a community redevelopment project, which are legally committed to a Community Redevelopment Agency, shall be made during the period that such tax increment is legally committed for repayment of the redevelopment project costs.

5. If at any time after the effective date of this resolution, the calculations used herein to determine initial property tax transfers or the data used to perform those calculations are found to be incorrect thus producing an improper or inaccurate property tax transfer, the property tax transfer shall be recalculated and the corrected transfer shall be implemented for the next fiscal year.

The foregoing resolution was adopted by the Board of Supervisors of the County of Los Angeles, the Board of Directors of Santa Clarita Valley Sanitation District of Los Angeles County, and the governing bodies of Greater Los Angeles County Vector Control District, Antelope Valley Resource Conservation District, City of Santa Clarita, Santa Clarita Library, and Santa Clarita Valley Water Agency, signatory hereto.

SANTA CLARITA VALLEY SANITATION
DISTRICT OF LOS ANGELES COUNTY

Chairperson, Board of Directors

ATTEST:

Secretary

Date

(SIGNED IN COUNTERPART)

ANNEXATION TO: STA CLRTA VLY SANIT DIS OF LA CO
 ACCOUNT NUMBER: 067.35
 TRA: 00547
 EFFECTIVE DATE: 07/01/2023
 ANNEXATION NUMBER: 1130 PROJECT NAME: A-SCV-1130
 DISTRICT SHARE: 0.017375930

ACCOUNT #	TAXING AGENCY	CURRENT TAX SHARE	PERCENT	PROPOSED DIST SHARE	ALLOCATED SHARE	ADJUSTMENTS	NET SHARE
001.05	LOS ANGELES COUNTY GENERAL	0.223130321	22.3139 %	0.017375930	0.003877107	-0.003968160	0.219162161
001.20	L.A. COUNTY ACCUM CAP OUTLAY	0.000112429	0.0112 %	0.017375930	0.000001953	0.000000000	0.000112429
007.30	CONSOL. FIRE PRO.DIST.OF L.A.CO.	0.166511194	16.6511 %	0.017375930	0.002893286	-0.002893286	0.163617908
007.31	L A C FIRE-FFW	0.005127811	0.5127 %	0.017375930	0.000089100	0.000000000	0.005127811
030.10	L.A.CO.FL.CON.DR.IMP.DIST.MAINT.	0.001697011	0.1697 %	0.017375930	0.000029487	-0.000029487	0.001667524
030.70	LA CO FLOOD CONTROL MAINT	0.009603798	0.9603 %	0.017375930	0.000166874	-0.000166874	0.009436924
061.80	GREATER L A CO VECTOR CONTROL	0.000322714	0.0322 %	0.017375930	0.000005607	-0.000005607	0.000317107
068.05	ANTELOPE VY RESOURCE CONSER DIST	0.000000000	0.0000 %	0.017375930	0.000000000	0.000000000	0.000000000
249.01	CITY-SANTA CLARITA TD #1	0.055890391	5.5890 %	0.017375930	0.000971147	-0.000971147	0.054919244
249.56	CITY-SANTA CLARITA LIBRARY	0.022949575	2.2949 %	0.017375930	0.000398770	-0.000398770	0.022550805
302.01	SANTA CLARITA VALLEY WATER-CLWA	0.056433608	5.6433 %	0.017375930	0.000980586	-0.000980586	0.055453022
400.00	EDUCATIONAL REV AUGMENTATION FD	0.068988344	6.8988 %	0.017375930	0.001198736	EXEMPT	0.068988344
400.01	EDUCATIONAL AUG FD IMPOUND	0.133765294	13.3765 %	0.017375930	0.002324296	EXEMPT	0.133765294
400.15	COUNTY SCHOOL SERVICES	0.001394261	0.1394 %	0.017375930	0.000024226	EXEMPT	0.001394261
400.21	CHILDREN'S INSTIL TUITION FUND	0.002767127	0.2767 %	0.017375930	0.000048081	EXEMPT	0.002767127
665.01	SULPHUR SPRINGS UNION SCHOOL DIS	0.084860244	8.4860 %	0.017375930	0.001474525	EXEMPT	0.084860244
665.06	CO.SCH.SERV.FD.- SULPHUR SPRINGS	0.007276283	0.7276 %	0.017375930	0.000126432	EXEMPT	0.007276283
665.07	DEV.CTR.HDCPD-MINOR-SULPHUR SPGS	0.000804363	0.0804 %	0.017375930	0.000013976	EXEMPT	0.000804363
757.02	HART WILLIAM S UNION HIGH	0.079596484	7.9596 %	0.017375930	0.001383062	EXEMPT	0.079596484

ANNEXATION NUMBER: 1130

PROJECT NAME: A-SCV-1130

TRA: 00547

ACCOUNT #	TAXING AGENCY	CURRENT TAX SHARE	PERCENT	PROPOSED DIST SHARE	ALLOCATED SHARE	ADJUSTMENTS	NET SHARE
757.06	CO.SCH.SERV.FD.- HART,WILLIAM S.	0.000331798	0.0331 %	0.017375930	0.000005765	EXEMPT	0.000331798
757.07	HART,WILLIAM S.-ELEM SCHOOL FUND	0.041881184	4.1881 %	0.017375930	0.000727724	EXEMPT	0.041881184
814.04	SANTA CLARITA COMMUNITY COLLEGE	0.036555766	3.6555 %	0.017375930	0.000635190	EXEMPT	0.036555766
***067.35	STA CLRTA VLY SANIT DIS OF LA CO	0.000000000	0.0000 %	0.017375930	0.000000000	0.000000000	0.009413917
TOTAL:		1.000000000	100.0000 %		0.017375930	-0.009413917	1.000000000

SANTA CLARITA VALLEY SANITATION DISTRICT OF LOS ANGELES COUNTY

PROPOSED ANNEXATION NO. 1131

AGENDA DATE: Resolution Making Application to LAFCO February 20, 2024

LOCATION: Located approximately 600 feet east of Pine Street and approximately 1,500 feet south of Newhall Avenue, all within in the City of Santa Clarita, as shown on the attached map.

PROCESSING FEES:	District	\$ 1,450.00
	Local Agency Formation Commission	5,600.00
	State Board of Equalization	<u>300.00</u>
	Total:	\$ <u>7,350.00</u>

DESCRIPTION & REMARKS: The annexation consists of a small parcel that needs to be included in a larger development due to a lot line adjustment.

NOTICE OF FINDING/CERTIFICATE OF FILING

ANNEXATION NO. 1131 TO SANTA CLARITA VALLEY SANITATION DISTRICT

The annexation consists of a small parcel that needs to be included in a larger development due to a lot line adjustment.

1. **BASED UPON REVIEW AND STUDY, I FIND AND CERTIFY THAT:**

- The annexation **is exempt** from the provisions of the California Environmental Quality Act, pursuant to the State CEQA Guidelines,

Section: 15319(b)

Reason: Annexations of small parcels of the minimum size for facilities exempted by Section 15303, New Construction or Conversion of Small Structures

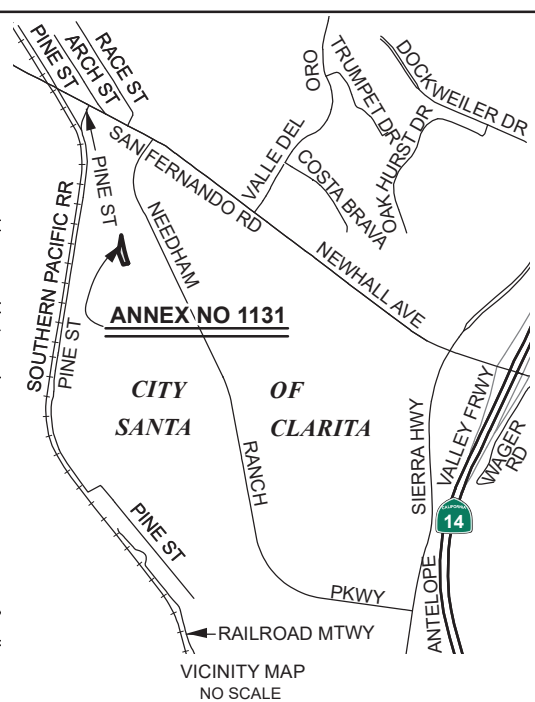
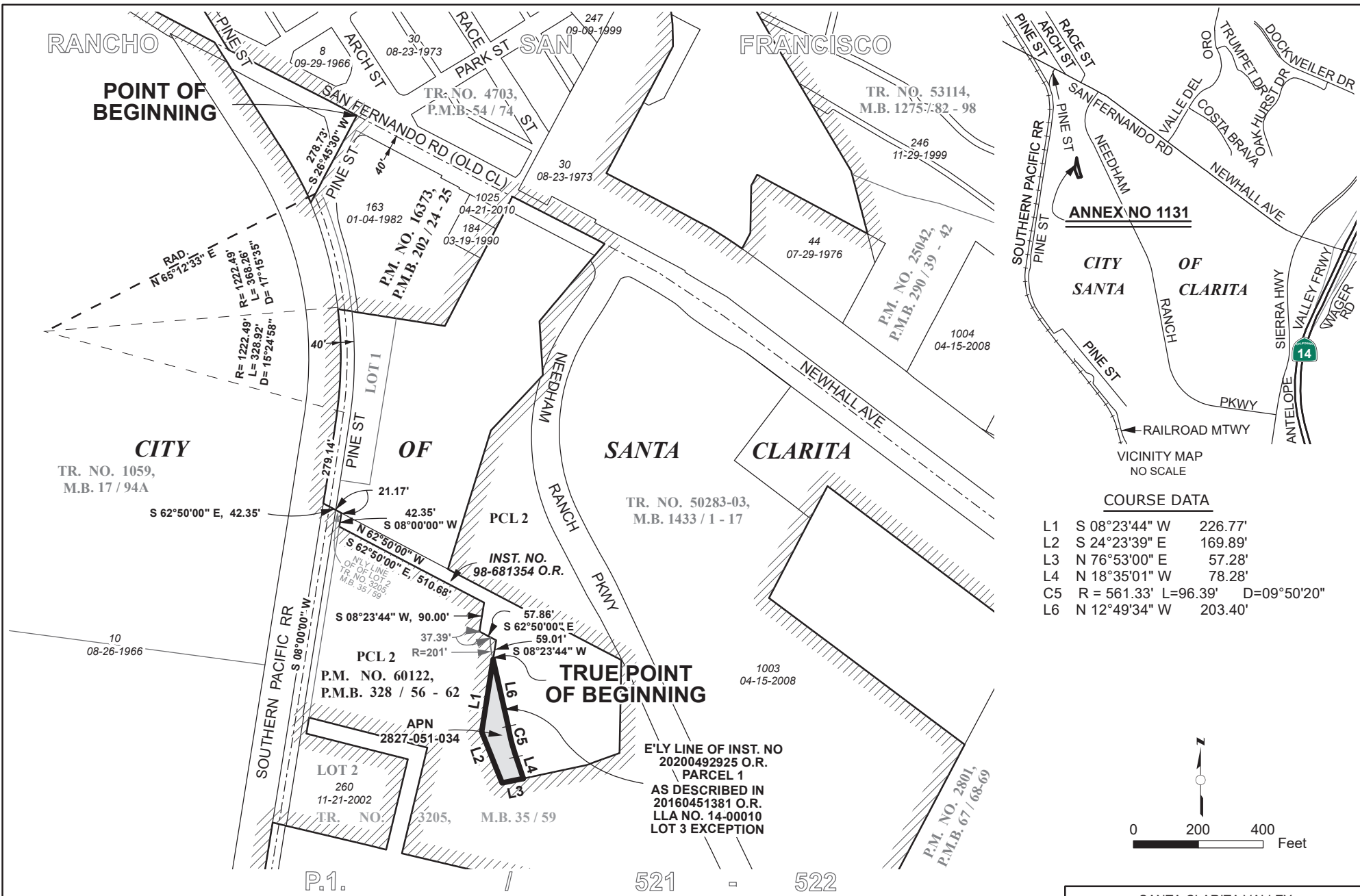
- The **Negative Declaration** is adequate for consideration of the annexation.

- The **Environmental Impact Report** is acceptable for consideration of the annexation.

2. The subject annexation has been set for consideration before the Board of Directors of Santa Clarita Valley Sanitation District at their meeting to be held on February 20, 2024, at the time and place as provided for the meeting of said date.
3. The subject annexation and all related documents are on file in the office of the Chief Engineer and General Manager, Los Angeles County Sanitation Districts, 1955 Workman Mill Road, (P.O. Box 4998) Whittier, California and may be examined by any interested person for further particulars. Telephone: (562) 908-4288, extension 2708.

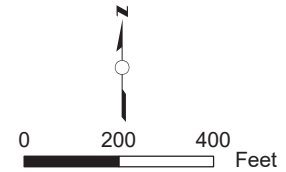


Stan Pegadiotes
Division Engineer
Facilities Planning Department



COURSE DATA

L1	S 08°23'44" W	226.77'
L2	S 24°23'39" E	169.89'
L3	N 76°53'00" E	57.28'
L4	N 18°35'01" W	78.28'
C5	R = 561.33' L = 96.39' D = 09°50'20"	
L6	N 12°49'34" W	203.40'



"FOR TAX ASSESSMENT PURPOSES ONLY"

LA County Assessor Landbase, CAMS Centerline, DPW City boundary
LA County Sanitation Districts: AnnexationLayer and District Layer

Annexation No. 1131 shown thus	
Boundary of Santa Clarita Valley Sanitation District	
Prior to Annexation No. 1131 shown thus	
Prior Annexations shown thus	
Area of Annexation	0.456 Acres

SANTA CLARITA VALLEY
SANITATION DISTRICT
OF LOS ANGELES COUNTY, CA
OFFICE OF CHIEF ENGINEER
ROBERT C. FERRANTE
CHIEF ENGINEER & GENERAL MANAGER
ANNEXATION NO. 1131
TO
SANTA CLARITA VALLEY
SANITATION DISTRICT
Recorded:

JOINT RESOLUTION OF THE BOARD OF SUPERVISORS OF THE COUNTY OF LOS ANGELES
ACTING IN BEHALF OF

Los Angeles County General Fund

Los Angeles County Consolidated Fire Protection District

Los Angeles County Flood Control

THE BOARD OF DIRECTORS OF SANTA CLARITA VALLEY SANITATION DISTRICT OF LOS
ANGELES COUNTY, AND THE GOVERNING BODIES OF

Greater Los Angeles County Vector Control District

City of Santa Clarita

Santa Clarita Street Lighting Maintenance District No. 2

Santa Clarita Library

Santa Clarita Valley Water Agency

APPROVING AND ACCEPTING NEGOTIATED EXCHANGE OF PROPERTY TAX REVENUES
RESULTING FROM ANNEXATION TO SANTA CLARITA VALLEY SANITATION DISTRICT

"ANNEXATION NO. 1131"

WHEREAS, pursuant to Section 99 and 99.01 of the Revenue and Taxation Code, prior to the effective date of any jurisdictional change which will result in a special district providing a new service, the governing bodies of all local agencies that receive an apportionment of the property tax from the area must determine the amount of property tax revenues from the annual tax increment to be exchanged between the affected agencies and approve and accept the negotiated exchange of property tax revenues by resolution; and

WHEREAS, the governing bodies of the agencies signatory hereto have made determinations of the amount of property tax revenues from the annual tax increments to be exchanged as a result of the annexation to Santa Clarita Valley Sanitation District entitled *Annexation No. 1131*;

NOW, THEREFORE, BE IT RESOLVED AS FOLLOWS:

1. The negotiated exchange of property tax revenues resulting from the annexation of territory to Santa Clarita Valley Sanitation District in the annexation entitled *Annexation No. 1131* is approved and accepted.

2. For each fiscal year commencing on July 1, 2023, or after the effective date of this jurisdictional change, whichever is later, the County Auditor shall transfer to Santa Clarita Valley Sanitation District a total of 0.9678106 percent of the annual tax increment attributable to the land area encompassed within *Annexation No. 1131* as shown on the attached Worksheet.

3. No additional transfer of property tax revenues shall be made from any other tax agencies to Santa Clarita Valley Sanitation District as a result of annexation entitled *Annexation No. 1131*.

4. No transfer of property tax increments from properties within a community redevelopment project, which are legally committed to a Community Redevelopment Agency, shall be made during the period that such tax increment is legally committed for repayment of the redevelopment project costs.

5. If at any time after the effective date of this resolution, the calculations used herein to determine initial property tax transfers or the data used to perform those calculations are found to be incorrect thus producing an improper or inaccurate property tax transfer, the property tax transfer shall be recalculated and the corrected transfer shall be implemented for the next fiscal year.

The foregoing resolution was adopted by the Board of Supervisors of the County of Los Angeles, the Board of Directors of Santa Clarita Valley Sanitation District of Los Angeles County, and the governing bodies of Greater Los Angeles County Vector Control District, City of Santa Clarita, Santa Clarita Street Lighting Maintenance District No. 2, Santa Clarita Library, and Santa Clarita Valley Water Agency, signatory hereto.

SANTA CLARITA VALLEY SANITATION
DISTRICT OF LOS ANGELES COUNTY

Chairperson, Board of Directors

ATTEST:

Secretary

Date

(SIGNED IN COUNTERPART)

ANNEXATION TO: STA CLRTA VLY SANIT DIS OF LA CO
 ACCOUNT NUMBER: 067.35
 TRA: 16128
 EFFECTIVE DATE: 07/01/2023
 ANNEXATION NUMBER: 1131 PROJECT NAME: A-SCV-1131
 DISTRICT SHARE: 0.017375930

ACCOUNT #	TAXING AGENCY	CURRENT TAX SHARE	PERCENT	PROPOSED DIST SHARE	ALLOCATED SHARE	ADJUSTMENTS	NET SHARE
001.05	LOS ANGELES COUNTY GENERAL	0.217659214	21.7672 %	0.017375930	0.003782043	-0.003869224	0.213789990
001.20	L.A. COUNTY ACCUM CAP OUTLAY	0.000000000	0.0000 %	0.017375930	0.000000000	0.000000000	0.000000000
007.30	CONSOL. FIRE PRO.DIST.OF L.A.CO.	0.169934902	16.9934 %	0.017375930	0.002952776	-0.002952776	0.166982126
007.31	L A C FIRE-FFW	0.005017358	0.5017 %	0.017375930	0.000087181	0.000000000	0.005017358
030.10	L.A.CO.FL.CON.DR.IMP.DIST.MAINT.	0.001546501	0.1546 %	0.017375930	0.000026871	-0.000026871	0.001519630
030.70	LA CO FLOOD CONTROL MAINT	0.008751953	0.8751 %	0.017375930	0.000152073	-0.000152073	0.008599880
061.80	GREATER L A CO VECTOR CONTROL	0.000321825	0.0321 %	0.017375930	0.000005592	-0.000005592	0.000316233
249.01	CITY-SANTA CLARITA NEWHALL RP	0.057230423	5.7230 %	0.017375930	0.000994431	-0.000994431	0.056235992
249.32	STA CLRTA STREET LIGHT MAINT #2	0.020629942	2.0629 %	0.017375930	0.000358464	-0.000358464	0.020271478
249.56	CITY-SANTA CLARITA LIBRARY	0.021314241	2.1314 %	0.017375930	0.000370354	-0.000370354	0.020943887
302.01	SANTA CLARITA VALLEY WATER-CLWA	0.053222813	5.3222 %	0.017375930	0.000924795	-0.000924795	0.052298018
309.01	SANTA CLARITA VALLEY WATER-NCW	0.001353986	0.1353 %	0.017375930	0.000023526	-0.000023526	0.001330460
400.00	EDUCATIONAL REV AUGMENTATION FD	0.070472677	7.0472 %	0.017375930	0.001224528	EXEMPT	0.070472677
400.01	EDUCATIONAL AUG FD IMPOUND	0.133767785	13.3767 %	0.017375930	0.002324339	EXEMPT	0.133767785
400.15	COUNTY SCHOOL SERVICES	0.001317252	0.1317 %	0.017375930	0.000022888	EXEMPT	0.001317252
400.21	CHILDREN'S INSTIL TUITION FUND	0.002614318	0.2614 %	0.017375930	0.000045426	EXEMPT	0.002614318
581.01	NEWHALL SCHOOL DISTRICT	0.077024880	7.7024 %	0.017375930	0.001338378	EXEMPT	0.077024880
581.06	CO.SCH.SERV.FD.- NEWHALL	0.007385616	0.7385 %	0.017375930	0.000128331	EXEMPT	0.007385616
581.07	DEV.CTR. HDCPD.MINOR-NEWHALL	0.000813029	0.0813 %	0.017375930	0.000014127	EXEMPT	0.000813029

ANNEXATION NUMBER: 1131

PROJECT NAME: A-SCV-1131

TRA: 16128

ACCOUNT #	TAXING AGENCY	CURRENT TAX SHARE	PERCENT	PROPOSED DIST SHARE	ALLOCATED SHARE	ADJUSTMENTS	NET SHARE
757.02	HART WILLIAM S UNION HIGH	0.075201637	7.5201 %	0.017375930	0.001306698	EXEMPT	0.075201637
757.06	CO.SCH.SERV.FD.- HART,WILLIAM S.	0.000313470	0.0313 %	0.017375930	0.000005446	EXEMPT	0.000313470
757.07	HART,WILLIAM S.-ELEM SCHOOL FUND	0.039568775	3.9568 %	0.017375930	0.000687544	EXEMPT	0.039568775
814.04	SANTA CLARITA COMMUNITY COLLEGE	0.034537403	3.4537 %	0.017375930	0.000600119	EXEMPT	0.034537403
***067.35	STA CLRTA VLY SANIT DIS OF LA CO	0.000000000	0.0000 %	0.017375930	0.000000000	0.000000000	0.009678106
TOTAL:		1.000000000	100.0000 %		0.017375930	-0.009678106	1.000000000

SANTA CLARITA VALLEY SANITATION DISTRICT OF LOS ANGELES COUNTY

PROPOSED ANNEXATION NO. 1132

AGENDA DATE: Resolution Making Application to LAFCO February 20, 2024

LOCATION: Located on the east side of Lost Canyon Road approximately 130 feet north of the Southern Pacific Railroad, all within the City of Santa Clarita, as shown on the attached map.

PROCESSING FEES:	District	\$ 2,000.00
	Local Agency Formation Commission	7,500.00
	State Board of Equalization	<u>800.00</u>
	Total:	\$ <u>10,300.00</u>

DESCRIPTION & REMARKS: The annexation consists of 348 proposed apartments and 150 proposed condominiums.

NOTICE OF FINDING/CERTIFICATE OF FILING

ANNEXATION NO. 1132 TO SANTA CLARITA VALLEY SANITATION DISTRICT

The annexation consists of 348 proposed apartments and 150 proposed condominiums.

1. **BASED UPON REVIEW AND STUDY, I FIND AND CERTIFY THAT:**

- The annexation **is exempt** from the provisions of the California Environmental Quality Act, pursuant to the State CEQA Guidelines,

Section:

Reason:

- The **Negative Declaration** is adequate for consideration of the annexation.

- The **Sustainable Communities Environmental Assessment** is acceptable for consideration of the annexation.

ISSUED BY:

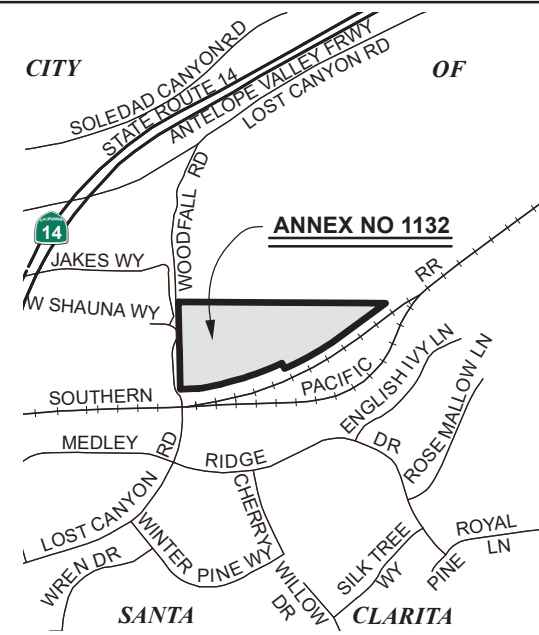
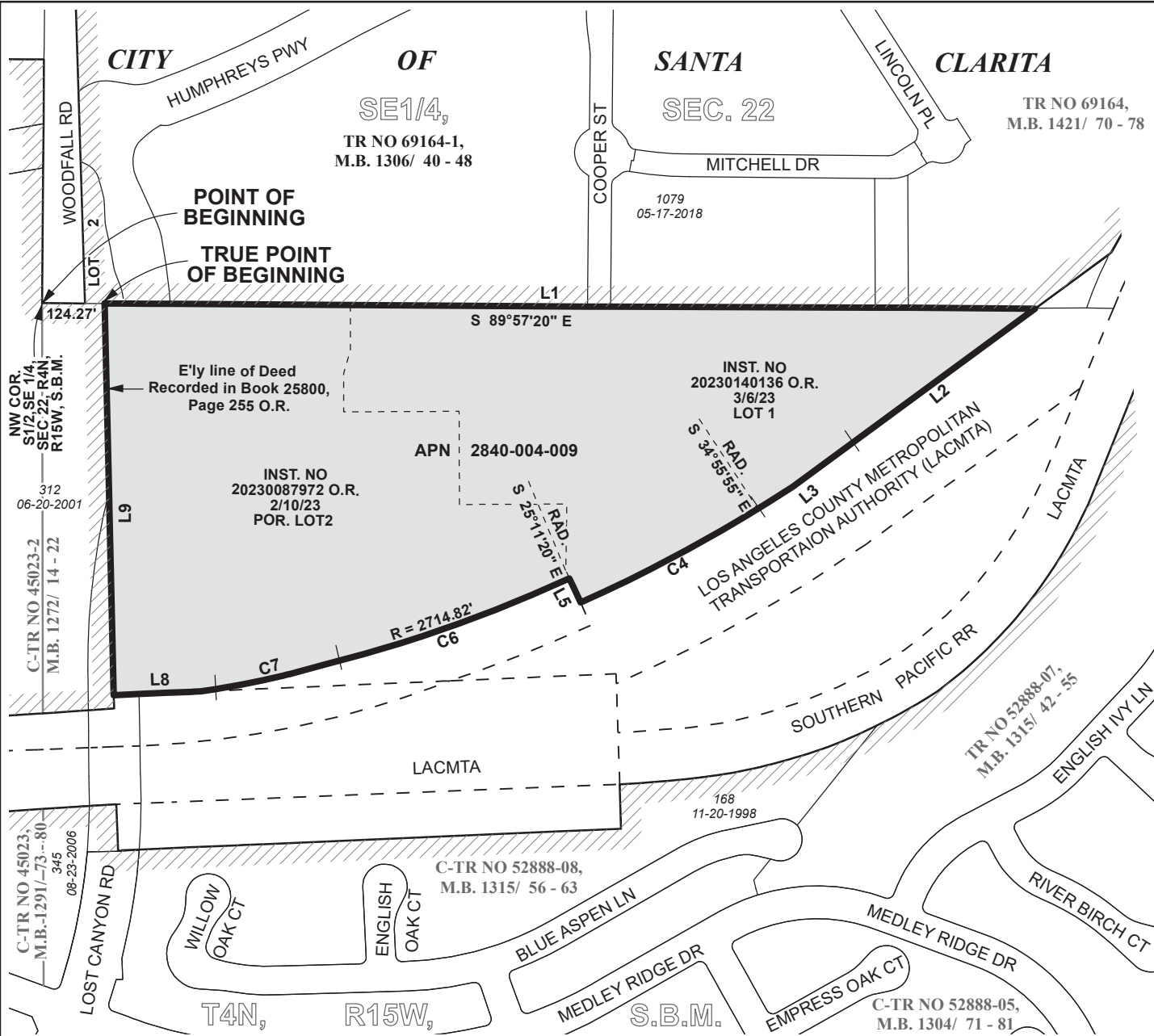
- Los Angeles County Department of Regional Planning

- City of Santa Clarita

2. The subject annexation has been set for consideration before the Board of Directors of Santa Clarita Valley Sanitation District at their meeting to be held on February 20, 2024, at the time and place as provided for the meeting of said date.
3. The subject annexation and all related documents are on file in the office of the Chief Engineer and General Manager, Los Angeles County Sanitation Districts, 1955 Workman Mill Road, (P.O. Box 4998) Whittier, California and may be examined by any interested person for further particulars. Telephone: (562) 908-4288, extension 2708.



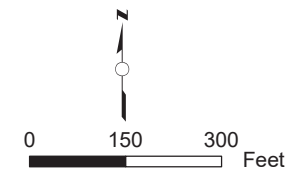
Stan Pegadiotes
Division Engineer
Facilities Planning Department



VICINITY MAP
NO SCALE

COURSE DATA

L1	S 89°57'20" E	1799.22'	
L2	S 53°28'05" W	421.92'	
L3	S 53°59'43" W	157.20'	
C4	R=2764.82'	L= 470.15'	D= 09°44'35"
L5	N 25°11'20" W	50.00'	
C6	R=2714.82'	L= 500.36'	D= 10°33'36"
C7	R=1759.91'	L= 197.45'	D= 06°25'41"
L8	S 87°45'36" W	215.80'	
L9	N 02°00'47" W	753.03'	



**"FOR TAX ASSESSMENT
PURPOSES ONLY"**

- Annexation No. 1132 shown thus
- Boundary of Santa Clarita Valley Sanitation District
- Prior to Annexation No. 1132 shown thus
- Prior Annexations shown thus
- Area of Annexation 20.426 Acres

ANNEX. NO.
(RECORDING DATE)

LA County Assessor Landbase,
CAMS Centerline, DPW City boundary
LA County Sanitation Districts:
AnnexationLayer and District Layer

SANTA CLARITA VALLEY
SANITATION DISTRICT
OF LOS ANGELES COUNTY, CA
OFFICE OF CHIEF ENGINEER
ROBERT C. FERRANTE
CHIEF ENGINEER & GENERAL MANAGER

ANNEXATION NO. 1132
TO
SANTA CLARITA VALLEY
SANITATION DISTRICT

Recorded:

JOINT RESOLUTION OF THE BOARD OF SUPERVISORS OF THE COUNTY OF LOS ANGELES
ACTING IN BEHALF OF

Los Angeles County General Fund

Los Angeles County Consolidated Fire Protection District

Los Angeles County Flood Control

THE BOARD OF DIRECTORS OF SANTA CLARITA VALLEY SANITATION DISTRICT OF LOS
ANGELES COUNTY, AND THE GOVERNING BODIES OF

Greater Los Angeles County Vector Control District

Antelope Valley Resource Conservation District

City of Santa Clarita

Santa Clarita Library

Santa Clarita Valley Water Agency

APPROVING AND ACCEPTING NEGOTIATED EXCHANGE OF PROPERTY TAX REVENUES
RESULTING FROM ANNEXATION TO SANTA CLARITA VALLEY SANITATION DISTRICT

"ANNEXATION NO. 1132"

WHEREAS, pursuant to Section 99 and 99.01 of the Revenue and Taxation Code, prior to the effective date of any jurisdictional change which will result in a special district providing a new service, the governing bodies of all local agencies that receive an apportionment of the property tax from the area must determine the amount of property tax revenues from the annual tax increment to be exchanged between the affected agencies and approve and accept the negotiated exchange of property tax revenues by resolution; and

WHEREAS, the governing bodies of the agencies signatory hereto have made determinations of the amount of property tax revenues from the annual tax increments to be exchanged as a result of the annexation to Santa Clarita Valley Sanitation District entitled *Annexation No. 1132*;

NOW, THEREFORE, BE IT RESOLVED AS FOLLOWS:

1. The negotiated exchange of property tax revenues resulting from the annexation of territory to Santa Clarita Valley Sanitation District in the annexation entitled *Annexation No. 1132* is approved and accepted.

2. For each fiscal year commencing on July 1, 2023, or after the effective date of this jurisdictional change, whichever is later, the County Auditor shall transfer to Santa Clarita Valley Sanitation District a total of 0.9606285 percent of the annual tax increment attributable to the land area encompassed within *Annexation No. 1132* as shown on the attached Worksheet.

3. No additional transfer of property tax revenues shall be made from any other tax agencies to Santa Clarita Valley Sanitation District as a result of annexation entitled *Annexation No. 1132*.

4. No transfer of property tax increments from properties within a community redevelopment project, which are legally committed to a Community Redevelopment Agency, shall be made during the period that such tax increment is legally committed for repayment of the redevelopment project costs.

5. If at any time after the effective date of this resolution, the calculations used herein to determine initial property tax transfers or the data used to perform those calculations are found to be incorrect thus producing an improper or inaccurate property tax transfer, the property tax transfer shall be recalculated and the corrected transfer shall be implemented for the next fiscal year.

The foregoing resolution was adopted by the Board of Supervisors of the County of Los Angeles, the Board of Directors of Santa Clarita Valley Sanitation District of Los Angeles County, and the governing bodies of Greater Los Angeles County Vector Control District, Antelope Valley Resource Conservation District, City of Santa Clarita, Santa Clarita Library, and Santa Clarita Valley Water Agency, signatory hereto.

SANTA CLARITA VALLEY SANITATION
DISTRICT OF LOS ANGELES COUNTY

Chairperson, Board of Directors

ATTEST:

Secretary

Date

(SIGNED IN COUNTERPART)

ANNEXATION TO: STA CLRTA VLY SANIT DIS OF LA CO
 ACCOUNT NUMBER: 067.35
 TRA: 15862
 EFFECTIVE DATE: 07/01/2023
 ANNEXATION NUMBER: 1132 PROJECT NAME: A-SCV-1132
 DISTRICT SHARE: 0.017375930

ACCOUNT #	TAXING AGENCY	CURRENT TAX SHARE	PERCENT	PROPOSED DIST SHARE	ALLOCATED SHARE	ADJUSTMENTS	NET SHARE
001.05	LOS ANGELES COUNTY GENERAL	0.226124675	22.6138 %	0.017375930	0.003929136	-0.004042901	0.222081774
001.20	L.A. COUNTY ACCUM CAP OUTLAY	0.000111593	0.0111 %	0.017375930	0.000001939	0.000000000	0.000111593
007.30	CONSOL. FIRE PRO.DIST.OF L.A.CO.	0.169578686	16.9578 %	0.017375930	0.002946587	-0.002946587	0.166632099
007.31	L A C FIRE-FFW	0.006435721	0.6435 %	0.017375930	0.000111826	0.000000000	0.006435721
030.10	L.A.CO.FL.CON.DR.IMP.DIST.MAINT.	0.001680386	0.1680 %	0.017375930	0.000029198	-0.000029198	0.001651188
030.70	LA CO FLOOD CONTROL MAINT	0.009509697	0.9509 %	0.017375930	0.000165239	-0.000165239	0.009344458
061.80	GREATER L A CO VECTOR CONTROL	0.000322713	0.0322 %	0.017375930	0.000005607	-0.000005607	0.000317106
068.05	ANTELOPE VY RESOURCE CONSER DIST	0.000000000	0.0000 %	0.017375930	0.000000000	0.000000000	0.000000000
249.01	CITY-SANTA CLARITA TD #1	0.060238521	6.0238 %	0.017375930	0.001046700	-0.001046700	0.059191821
249.56	CITY-SANTA CLARITA LIBRARY	0.022768918	2.2768 %	0.017375930	0.000395631	-0.000395631	0.022373287
302.01	SANTA CLARITA VALLEY WATER-CLWA	0.056078895	5.6078 %	0.017375930	0.000974422	-0.000974422	0.055104473
400.00	EDUCATIONAL REV AUGMENTATION FD	0.061410771	6.1410 %	0.017375930	0.001067069	EXEMPT	0.061410771
400.01	EDUCATIONAL AUG FD IMPOUND	0.131877650	13.1877 %	0.017375930	0.002291496	EXEMPT	0.131877650
400.15	COUNTY SCHOOL SERVICES	0.001385500	0.1385 %	0.017375930	0.000024074	EXEMPT	0.001385500
400.21	CHILDREN'S INSTIL TUITION FUND	0.002749736	0.2749 %	0.017375930	0.000047779	EXEMPT	0.002749736
665.01	SULPHUR SPRINGS UNION SCHOOL DIS	0.084326854	8.4326 %	0.017375930	0.001465257	EXEMPT	0.084326854
665.06	CO.SCH.SERV.FD.- SULPHUR SPRINGS	0.007230546	0.7230 %	0.017375930	0.000125637	EXEMPT	0.007230546
665.07	DEV.CTR.HDCPD-MINOR-SULPHUR SPGS	0.000799309	0.0799 %	0.017375930	0.000013888	EXEMPT	0.000799309
757.02	HART WILLIAM S UNION HIGH	0.079096180	7.9096 %	0.017375930	0.001374369	EXEMPT	0.079096180

ANNEXATION NUMBER: 1132

PROJECT NAME: A-SCV-1132

TRA: 15862

ACCOUNT #	TAXING AGENCY	CURRENT TAX SHARE	PERCENT	PROPOSED DIST SHARE	ALLOCATED SHARE	ADJUSTMENTS	NET SHARE
757.06	CO.SCH.SERV.FD.- HART,WILLIAM S.	0.000329713	0.0329 %	0.017375930	0.000005729	EXEMPT	0.000329713
757.07	HART,WILLIAM S.-ELEM SCHOOL FUND	0.041617940	4.1617 %	0.017375930	0.000723150	EXEMPT	0.041617940
814.04	SANTA CLARITA COMMUNITY COLLEGE	0.036325996	3.6325 %	0.017375930	0.000631197	EXEMPT	0.036325996
***067.35	STA CLRTA VLY SANIT DIS OF LA CO	0.000000000	0.0000 %	0.017375930	0.000000000	0.000000000	0.009606285
TOTAL:		1.000000000	100.0000 %		0.017375930	-0.009606285	1.000000000

SANTA CLARITA VALLEY SANITATION DISTRICT OF LOS ANGELES COUNTY

PROPOSED ANNEXATION NO. 1135

AGENDA DATE: Resolution Making Application to LAFCO..... February 20, 2024

LOCATION: Located on the east side of Pine Street approximately 1,200 feet south of Newhall Avenue, all within the City of Santa Clarita, as shown on the attached map.

PROCESSING FEES:	District	\$ 2,000.00
	Local Agency Formation Commission	5,600.00
	State Board of Equalization	<u>350.00</u>
	Total:	<u>\$ 7,950.00</u>

DESCRIPTION & REMARKS: The annexation consists of one proposed restroom facility within Pioneer Oil Refinery Park.

NOTICE OF FINDING/CERTIFICATE OF FILING

ANNEXATION NO. 1135 TO SANTA CLARITA VALLEY SANITATION DISTRICT

The annexation consists of one existing park.

1. **BASED UPON REVIEW AND STUDY, I FIND AND CERTIFY THAT:**

- The annexation **is exempt** from the provisions of the California Environmental Quality Act, pursuant to the State CEQA Guidelines,

Section: 15303(a)

Reason: Construction of not more than three single-family homes in an urbanized area

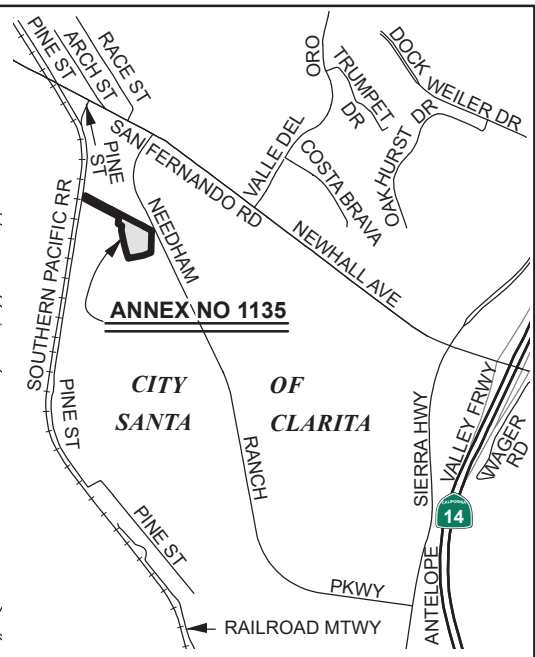
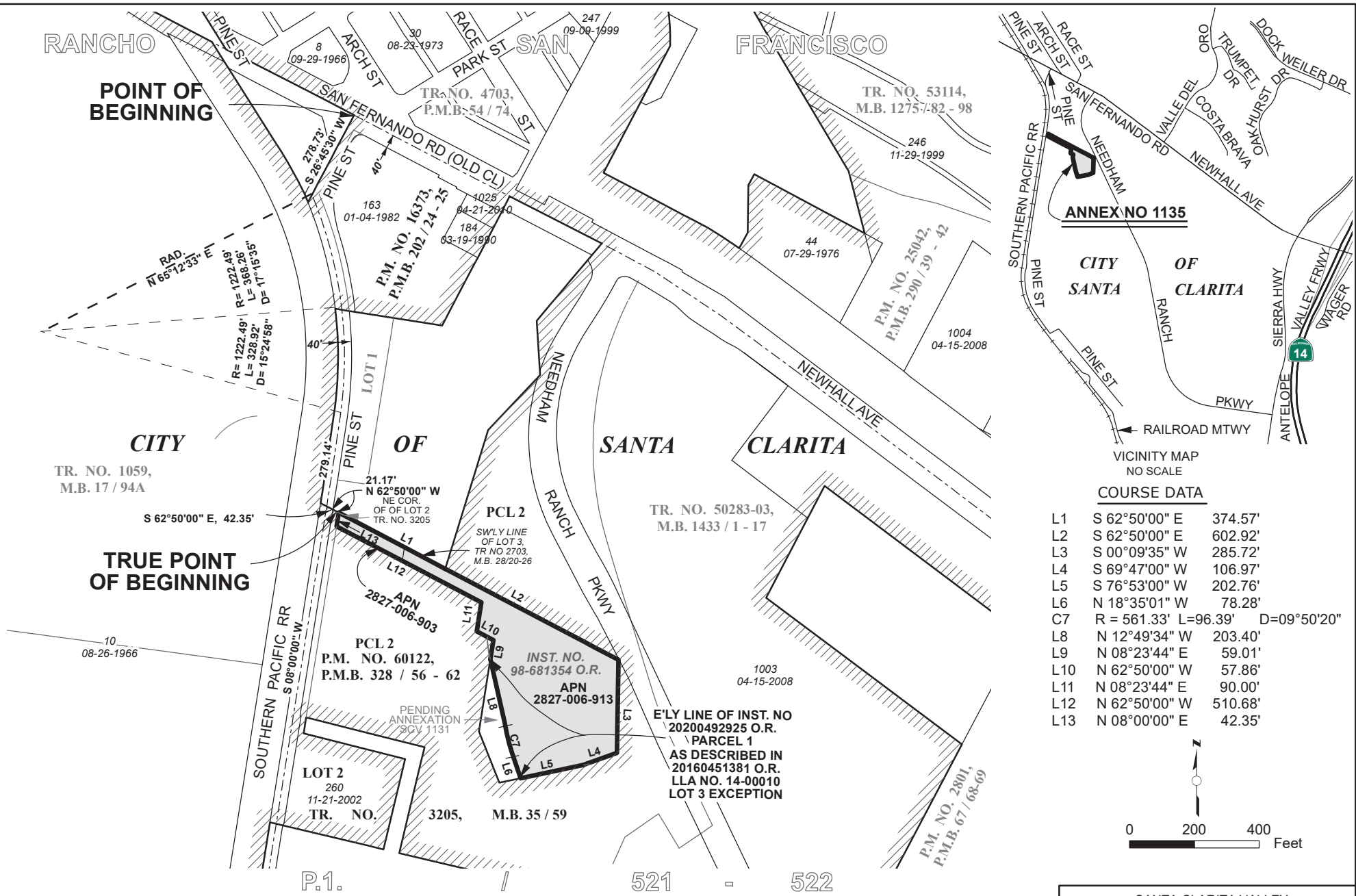
- The **Negative Declaration** is adequate for consideration of the annexation.

- The **Environmental Impact Report** is acceptable for consideration of the annexation.

2. The subject annexation has been set for consideration before the Board of Directors of Santa Clarita Valley Sanitation District at their meeting to be held on February 20, 2024, at the time and place as provided for the meeting of said date.
3. The subject annexation and all related documents are on file in the office of the Chief Engineer and General Manager, Los Angeles County Sanitation Districts, 1955 Workman Mill Road, (P.O. Box 4998) Whittier, California and may be examined by any interested person for further particulars. Telephone: (562) 908-4288, extension 2708.

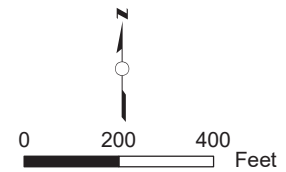


Stan Pegadiotes
Division Engineer
Facilities Planning Department



COURSE DATA

L1	S 62°50'00" E	374.57'
L2	S 62°50'00" E	602.92'
L3	S 00°09'35" W	285.72'
L4	S 69°47'00" W	106.97'
L5	S 76°53'00" W	202.76'
L6	N 18°35'01" W	78.28'
C7	R = 561.33' L=96.39' D=09°50'20"	
L8	N 12°49'34" W	203.40'
L9	N 08°23'44" E	59.01'
L10	N 62°50'00" W	57.86'
L11	N 08°23'44" E	90.00'
L12	N 62°50'00" W	510.68'
L13	N 08°00'00" E	42.35'



"FOR TAX ASSESSMENT PURPOSES ONLY"

Annexation No. 1135 shown thus
 Boundary of Santa Clarita Valley Sanitation District
 Prior to Annexation No. 1135 shown thus
 Prior Annexations shown thus
 Area of Annexation 4.171 Acres

LA County Assessor Landbase,
 CAMS Centerline, DPW City boundary
 LA County Sanitation Districts:
 AnnexationLayer and District Layer

SANTA CLARITA VALLEY
 SANITATION DISTRICT
 OF LOS ANGELES COUNTY, CA
 OFFICE OF CHIEF ENGINEER
 ROBERT C. FERRANTE
 CHIEF ENGINEER & GENERAL MANAGER
ANNEXATION NO. 1135
 TO
 SANTA CLARITA VALLEY
 SANITATION DISTRICT
 Recorded:

JOINT RESOLUTION OF THE BOARD OF SUPERVISORS OF THE COUNTY OF LOS ANGELES
ACTING IN BEHALF OF

- Los Angeles County General Fund
- Los Angeles County Consolidated Fire Protection District
- Los Angeles County Flood Control

THE BOARD OF DIRECTORS OF SANTA CLARITA VALLEY SANITATION DISTRICT OF LOS ANGELES COUNTY, AND THE GOVERNING BODIES OF

- Greater Los Angeles County Vector Control District
- City of Santa Clarita
- Santa Clarita Street Lighting Maintenance District No. 2
- Santa Clarita Library
- Santa Clarita Valley Water Agency

APPROVING AND ACCEPTING NEGOTIATED EXCHANGE OF PROPERTY TAX REVENUES
RESULTING FROM ANNEXATION TO SANTA CLARITA VALLEY SANITATION DISTRICT

"ANNEXATION NO. 1135"

WHEREAS, pursuant to Section 99 and 99.01 of the Revenue and Taxation Code, prior to the effective date of any jurisdictional change which will result in a special district providing a new service, the governing bodies of all local agencies that receive an apportionment of the property tax from the area must determine the amount of property tax revenues from the annual tax increment to be exchanged between the affected agencies and approve and accept the negotiated exchange of property tax revenues by resolution; and

WHEREAS, the governing bodies of the agencies signatory hereto have made determinations of the amount of property tax revenues from the annual tax increments to be exchanged as a result of the annexation to Santa Clarita Valley Sanitation District entitled *Annexation No. 1135*;

NOW, THEREFORE, BE IT RESOLVED AS FOLLOWS:

1. The negotiated exchange of property tax revenues resulting from the annexation of territory to Santa Clarita Valley Sanitation District in the annexation entitled *Annexation No. 1135* is approved and accepted.
2. For each fiscal year commencing on July 1, 2023, or after the effective date of this jurisdictional change, whichever is later, the County Auditor shall transfer to Santa Clarita Valley Sanitation District a total of 0.9666653 percent of the annual tax increment attributable to the land area encompassed within *Annexation No. 1135 for Tax Rate Area 15617* as shown on the attached Worksheet.
3. For each fiscal year commencing on July 1, 2023, or after the effective date of this jurisdictional change, whichever is later, the County Auditor shall transfer to Santa Clarita Valley

Sanitation District a total of 0.9678106 percent of the annual tax increment attributable to the land area encompassed within Annexation *No. 1135 for Tax Rate Area 16128* as shown on the attached Worksheet.

4. No additional transfer of property tax revenues shall be made from any other tax agencies to Santa Clarita Valley Sanitation District as a result of annexation entitled Annexation *No. 1135*.

5. No transfer of property tax increments from properties within a community redevelopment project, which are legally committed to a Community Redevelopment Agency, shall be made during the period that such tax increment is legally committed for repayment of the redevelopment project costs.

6. If at any time after the effective date of this resolution, the calculations used herein to determine initial property tax transfers or the data used to perform those calculations are found to be incorrect thus producing an improper or inaccurate property tax transfer, the property tax transfer shall be recalculated and the corrected transfer shall be implemented for the next fiscal year.

The foregoing resolution was adopted by the Board of Supervisors of the County of Los Angeles, the Board of Directors of Santa Clarita Valley Sanitation District of Los Angeles County, and the governing bodies of Greater Los Angeles County Vector Control District, City of Santa Clarita, Santa Clarita Street Lighting Maintenance District No. 2, Santa Clarita Library, and Santa Clarita Valley Water Agency, signatory hereto.

SANTA CLARITA VALLEY SANITATION
DISTRICT OF LOS ANGELES COUNTY

Chairperson, Board of Directors

ATTEST:

Secretary

Date

(SIGNED IN COUNTERPART)

ANNEXATION TO: STA CLRTA VLY SANIT DIS OF LA CO
 ACCOUNT NUMBER: 067.35
 TRA: 15617
 EFFECTIVE DATE: 07/01/2023
 ANNEXATION NUMBER: 1135 PROJECT NAME: A-SCV-1135
 DISTRICT SHARE: 0.017375930

ACCOUNT #	TAXING AGENCY	CURRENT TAX SHARE	PERCENT	PROPOSED DIST SHARE	ALLOCATED SHARE	ADJUSTMENTS	NET SHARE
001.05	LOS ANGELES COUNTY GENERAL	0.217034400	21.7045 %	0.017375930	0.003771186	-0.003857829	0.213176571
001.20	L.A. COUNTY ACCUM CAP OUTLAY	0.000000000	0.0000 %	0.017375930	0.000000000	0.000000000	0.000000000
007.30	CONSOL. FIRE PRO.DIST.OF L.A.CO.	0.170237703	17.0237 %	0.017375930	0.002958038	-0.002958038	0.167279665
007.31	L A C FIRE-FFW	0.004986427	0.4986 %	0.017375930	0.000086643	0.000000000	0.004986427
030.10	L.A.CO.FL.CON.DR.IMP.DIST.MAINT.	0.001545620	0.1545 %	0.017375930	0.000026856	-0.000026856	0.001518764
030.70	LA CO FLOOD CONTROL MAINT	0.008746790	0.8746 %	0.017375930	0.000151983	-0.000151983	0.008594807
061.80	GREATER L A CO VECTOR CONTROL	0.000322714	0.0322 %	0.017375930	0.000005607	-0.000005607	0.000317107
249.01	CITY-SANTA CLARITA NEWHALL RP	0.057345280	5.7345 %	0.017375930	0.000996427	-0.000996427	0.056348853
249.32	STA CLRTA STREET LIGHT MAINT #2	0.020621719	2.0621 %	0.017375930	0.000358321	-0.000358321	0.020263398
249.56	CITY-SANTA CLARITA LIBRARY	0.021304222	2.1304 %	0.017375930	0.000370180	-0.000370180	0.020934042
302.01	SANTA CLARITA VALLEY WATER-CLWA	0.053203124	5.3203 %	0.017375930	0.000924453	-0.000924453	0.052278671
309.01	SANTA CLARITA VALLEY WATER-NCW	0.000976020	0.0976 %	0.017375930	0.000016959	-0.000016959	0.000959061
400.00	EDUCATIONAL REV AUGMENTATION FD	0.071644870	7.1644 %	0.017375930	0.001244896	EXEMPT	0.071644870
400.01	EDUCATIONAL AUG FD IMPOUND	0.133767785	13.3767 %	0.017375930	0.002324339	EXEMPT	0.133767785
400.15	COUNTY SCHOOL SERVICES	0.001314447	0.1314 %	0.017375930	0.000022839	EXEMPT	0.001314447
400.21	CHILDREN'S INSTIL TUITION FUND	0.002608748	0.2608 %	0.017375930	0.000045329	EXEMPT	0.002608748
581.01	NEWHALL SCHOOL DISTRICT	0.076859342	7.6859 %	0.017375930	0.001335502	EXEMPT	0.076859342
581.06	CO.SCH.SERV.FD. - NEWHALL	0.007369712	0.7369 %	0.017375930	0.000128055	EXEMPT	0.007369712
581.07	DEV.CTR. HDCPD.MINOR-NEWHALL	0.000811338	0.0811 %	0.017375930	0.000014097	EXEMPT	0.000811338

ANNEXATION NUMBER: 1135

PROJECT NAME: A-SCV-1135

TRA: 15617

ACCOUNT #	TAXING AGENCY	CURRENT TAX SHARE	PERCENT	PROPOSED DIST SHARE	ALLOCATED SHARE	ADJUSTMENTS	NET SHARE
757.02	HART WILLIAM S UNION HIGH	0.075040063	7.5040 %	0.017375930	0.001303890	EXEMPT	0.075040063
757.06	CO.SCH.SERV.FD.- HART,WILLIAM S.	0.000312791	0.0312 %	0.017375930	0.000005435	EXEMPT	0.000312791
757.07	HART,WILLIAM S.-ELEM SCHOOL FUND	0.039483738	3.9483 %	0.017375930	0.000686066	EXEMPT	0.039483738
814.04	SANTA CLARITA COMMUNITY COLLEGE	0.034463147	3.4463 %	0.017375930	0.000598829	EXEMPT	0.034463147
***067.35	STA CLRTA VLY SANIT DIS OF LA CO	0.000000000	0.0000 %	0.017375930	0.000000000	0.000000000	0.009666653
TOTAL:		1.000000000	100.0000 %		0.017375930	-0.009666653	1.000000000

ANNEXATION TO: STA CLRTA VLY SANIT DIS OF LA CO
 ACCOUNT NUMBER: 067.35
 TRA: 16128
 EFFECTIVE DATE: 07/01/2023
 ANNEXATION NUMBER: 1135 PROJECT NAME: A-SCV-1135
 DISTRICT SHARE: 0.017375930

ACCOUNT #	TAXING AGENCY	CURRENT TAX SHARE	PERCENT	PROPOSED DIST SHARE	ALLOCATED SHARE	ADJUSTMENTS	NET SHARE
001.05	LOS ANGELES COUNTY GENERAL	0.217659214	21.7672 %	0.017375930	0.003782043	-0.003869224	0.213789990
001.20	L.A. COUNTY ACCUM CAP OUTLAY	0.000000000	0.0000 %	0.017375930	0.000000000	0.000000000	0.000000000
007.30	CONSOL. FIRE PRO.DIST.OF L.A.CO.	0.169934902	16.9934 %	0.017375930	0.002952776	-0.002952776	0.166982126
007.31	L A C FIRE-FFW	0.005017358	0.5017 %	0.017375930	0.000087181	0.000000000	0.005017358
030.10	L.A.CO.FL.CON.DR.IMP.DIST.MAINT.	0.001546501	0.1546 %	0.017375930	0.000026871	-0.000026871	0.001519630
030.70	LA CO FLOOD CONTROL MAINT	0.008751953	0.8751 %	0.017375930	0.000152073	-0.000152073	0.008599880
061.80	GREATER L A CO VECTOR CONTROL	0.000321825	0.0321 %	0.017375930	0.000005592	-0.000005592	0.000316233
249.01	CITY-SANTA CLARITA NEWHALL RP	0.057230423	5.7230 %	0.017375930	0.000994431	-0.000994431	0.056235992
249.32	STA CLRTA STREET LIGHT MAINT #2	0.020629942	2.0629 %	0.017375930	0.000358464	-0.000358464	0.020271478
249.56	CITY-SANTA CLARITA LIBRARY	0.021314241	2.1314 %	0.017375930	0.000370354	-0.000370354	0.020943887
302.01	SANTA CLARITA VALLEY WATER-CLWA	0.053222813	5.3222 %	0.017375930	0.000924795	-0.000924795	0.052298018
309.01	SANTA CLARITA VALLEY WATER-NCW	0.001353986	0.1353 %	0.017375930	0.000023526	-0.000023526	0.001330460
400.00	EDUCATIONAL REV AUGMENTATION FD	0.070472677	7.0472 %	0.017375930	0.001224528	EXEMPT	0.070472677
400.01	EDUCATIONAL AUG FD IMPOUND	0.133767785	13.3767 %	0.017375930	0.002324339	EXEMPT	0.133767785
400.15	COUNTY SCHOOL SERVICES	0.001317252	0.1317 %	0.017375930	0.000022888	EXEMPT	0.001317252
400.21	CHILDREN'S INSTIL TUITION FUND	0.002614318	0.2614 %	0.017375930	0.000045426	EXEMPT	0.002614318
581.01	NEWHALL SCHOOL DISTRICT	0.077024880	7.7024 %	0.017375930	0.001338378	EXEMPT	0.077024880
581.06	CO.SCH.SERV.FD. - NEWHALL	0.007385616	0.7385 %	0.017375930	0.000128331	EXEMPT	0.007385616
581.07	DEV.CTR. HDCPD.MINOR-NEWHALL	0.000813029	0.0813 %	0.017375930	0.000014127	EXEMPT	0.000813029

ANNEXATION NUMBER: 1135

PROJECT NAME: A-SCV-1135

TRA: 16128

ACCOUNT #	TAXING AGENCY	CURRENT TAX SHARE	PERCENT	PROPOSED DIST SHARE	ALLOCATED SHARE	ADJUSTMENTS	NET SHARE
757.02	HART WILLIAM S UNION HIGH	0.075201637	7.5201 %	0.017375930	0.001306698	EXEMPT	0.075201637
757.06	CO.SCH.SERV.FD.- HART,WILLIAM S.	0.000313470	0.0313 %	0.017375930	0.000005446	EXEMPT	0.000313470
757.07	HART,WILLIAM S.-ELEM SCHOOL FUND	0.039568775	3.9568 %	0.017375930	0.000687544	EXEMPT	0.039568775
814.04	SANTA CLARITA COMMUNITY COLLEGE	0.034537403	3.4537 %	0.017375930	0.000600119	EXEMPT	0.034537403
***067.35	STA CLRTA VLY SANIT DIS OF LA CO	0.000000000	0.0000 %	0.017375930	0.000000000	0.000000000	0.009678106
TOTAL:		1.000000000	100.0000 %		0.017375930	-0.009678106	1.000000000

SANTA CLARITA VALLEY SANITATION DISTRICT OF LOS ANGELES COUNTY

PROPOSED ANNEXATION NO. 1136

AGENDA DATE: Resolution Making Application to LAFCO February 20, 2024

LOCATION: Located at 17640 Scherzinger Lane in the City of Santa Clarita, as shown on the attached map.

PROCESSING FEES:	District	\$ 2,000.00
	Local Agency Formation Commission	5,600.00
	State Board of Equalization	<u>300.00</u>
	Total:	\$ <u>7,900.00</u>

DESCRIPTION & REMARKS: The annexation consists of one existing single-family home.

NOTICE OF FINDING/CERTIFICATE OF FILING

ANNEXATION NO. 1136 TO SANTA CLARITA VALLEY SANITATION DISTRICT

The annexation consists of one existing single-family home.

1. **BASED UPON REVIEW AND STUDY, I FIND AND CERTIFY THAT:**

- The annexation **is exempt** from the provisions of the California Environmental Quality Act, pursuant to the State CEQA Guidelines,

Section: 15319(a)

Reason: The annexation consists of areas containing existing structures developed to the density allowed by the current zoning

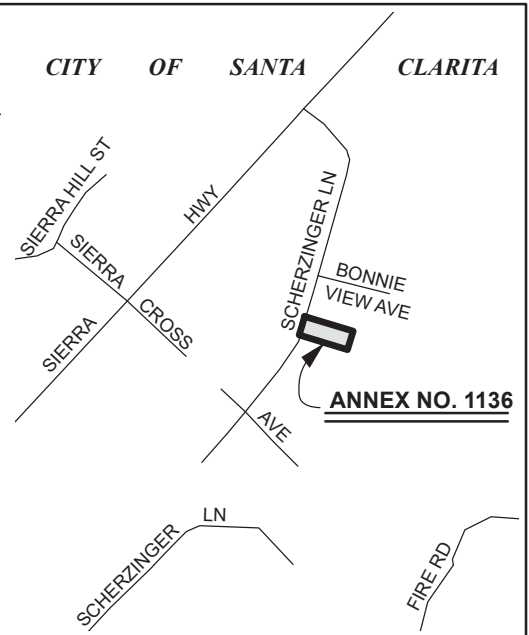
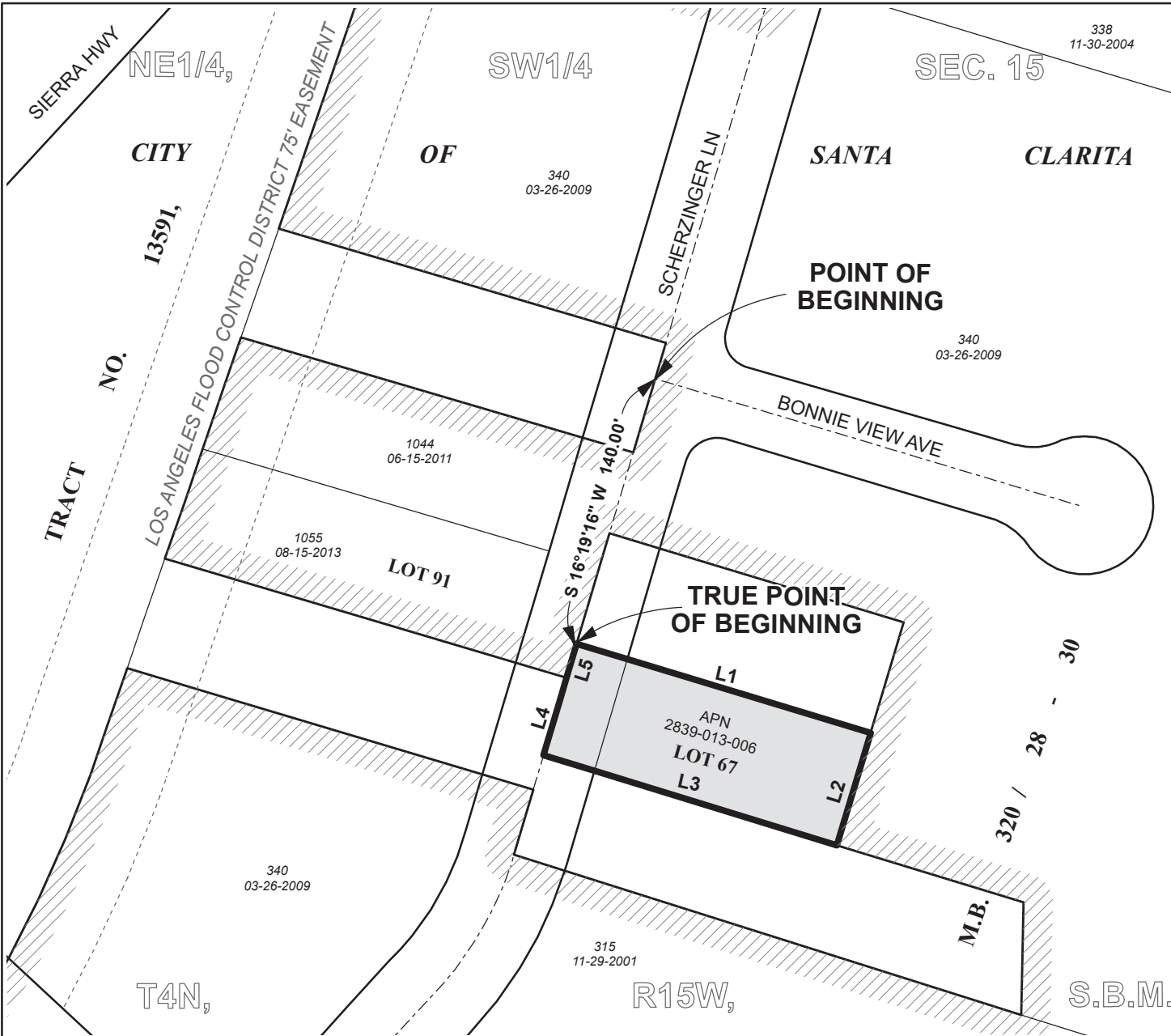
- The **Negative Declaration** is adequate for consideration of the annexation.

- The **Environmental Impact Report** is acceptable for consideration of the annexation.

2. The subject annexation has been set for consideration before the Board of Directors of Santa Clarita Valley Sanitation District at their meeting to be held on February 20, 2024, at the time and place as provided for the meeting of said date.
3. The subject annexation and all related documents are on file in the office of the Chief Engineer and General Manager, Los Angeles County Sanitation Districts, 1955 Workman Mill Road, (P.O. Box 4998) Whittier, California and may be examined by any interested person for further particulars. Telephone: (562) 908-4288, extension 2708.



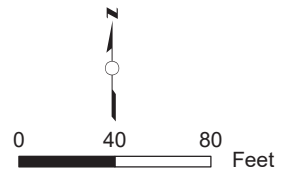
Stan Pegadiotes
Division Engineer
Facilities Planning Department



VICINITY MAP
NO SCALE



COURSE DATA

L1	S 73°40'44" E	157.00'
L2	S 16°19'16" W	60.00'
L3	N 73°40'44" W	157.00'
L4	N 16°19'16" E	42.54'
L5	N 16°19'16" E	17.46'



**"FOR TAX ASSESSMENT
PURPOSES ONLY"**

LA County Assessor Landbase,
CAMS Centerline, DPW City boundary
LA County Sanitation Districts:
AnnexationLayer and District Layer

Annexation No. 1136 shown thus 
 Boundary of Santa Clarita Valley Sanitation District
 Prior to Annexation No. 1136 shown thus 
 Prior Annexations shown thus **ANNEX. NO.**
 (RECORDING DATE)
 Area of Annexation 0.216 Acres

SANTA CLARITA VALLEY
SANITATION DISTRICT
OF LOS ANGELES COUNTY, CA
OFFICE OF CHIEF ENGINEER
ROBERT C. FERRANTE
CHIEF ENGINEER & GENERAL MANAGER
ANNEXATION NO. 1136
TO
SANTA CLARITA VALLEY
SANITATION DISTRICT
Recorded:

JOINT RESOLUTION OF THE BOARD OF SUPERVISORS OF THE COUNTY OF LOS ANGELES
ACTING IN BEHALF OF

Los Angeles County General Fund

Los Angeles County Consolidated Fire Protection District

Los Angeles County Flood Control

THE BOARD OF DIRECTORS OF SANTA CLARITA VALLEY SANITATION DISTRICT OF LOS
ANGELES COUNTY, AND THE GOVERNING BODIES OF

Greater Los Angeles County Vector Control District

Antelope Valley Resource Conservation District

City of Santa Clarita

Santa Clarita Library

Santa Clarita Valley Water Agency

APPROVING AND ACCEPTING NEGOTIATED EXCHANGE OF PROPERTY TAX REVENUES
RESULTING FROM ANNEXATION TO SANTA CLARITA VALLEY SANITATION DISTRICT

"ANNEXATION NO. 1136"

WHEREAS, pursuant to Section 99 and 99.01 of the Revenue and Taxation Code, prior to the effective date of any jurisdictional change which will result in a special district providing a new service, the governing bodies of all local agencies that receive an apportionment of the property tax from the area must determine the amount of property tax revenues from the annual tax increment to be exchanged between the affected agencies and approve and accept the negotiated exchange of property tax revenues by resolution; and

WHEREAS, the governing bodies of the agencies signatory hereto have made determinations of the amount of property tax revenues from the annual tax increments to be exchanged as a result of the annexation to Santa Clarita Valley Sanitation District entitled *Annexation No. 1136*;

NOW, THEREFORE, BE IT RESOLVED AS FOLLOWS:

1. The negotiated exchange of property tax revenues resulting from the annexation of territory to Santa Clarita Valley Sanitation District in the annexation entitled *Annexation No. 1136* is approved and accepted.
2. For each fiscal year commencing on July 1, 2023, or after the effective date of this jurisdictional change, whichever is later, the County Auditor shall transfer to Santa Clarita Valley Sanitation District a total of 0.9460229 percent of the annual tax increment attributable to the land area encompassed within *Annexation No. 1136* as shown on the attached Worksheet.
3. No additional transfer of property tax revenues shall be made from any other tax agencies to Santa Clarita Valley Sanitation District as a result of annexation entitled *Annexation No. 1136*.

4. No transfer of property tax increments from properties within a community redevelopment project, which are legally committed to a Community Redevelopment Agency, shall be made during the period that such tax increment is legally committed for repayment of the redevelopment project costs.

5. If at any time after the effective date of this resolution, the calculations used herein to determine initial property tax transfers or the data used to perform those calculations are found to be incorrect thus producing an improper or inaccurate property tax transfer, the property tax transfer shall be recalculated and the corrected transfer shall be implemented for the next fiscal year.

The foregoing resolution was adopted by the Board of Supervisors of the County of Los Angeles, the Board of Directors of Santa Clarita Valley Sanitation District of Los Angeles County, and the governing bodies of Greater Los Angeles County Vector Control District, Antelope Valley Resource Conservation District, City of Santa Clarita, Santa Clarita Library, and Santa Clarita Valley Water Agency, signatory hereto.

SANTA CLARITA VALLEY SANITATION
DISTRICT OF LOS ANGELES COUNTY

Chairperson, Board of Directors

ATTEST:

Secretary

Date

(SIGNED IN COUNTERPART)

ANNEXATION TO: STA CLRTA VLY SANIT DIS OF LA CO
 ACCOUNT NUMBER: 067.35
 TRA: 06563
 EFFECTIVE DATE: 07/01/2023
 ANNEXATION NUMBER: 1136 PROJECT NAME: A-SCV-1136
 DISTRICT SHARE: 0.017375930

ACCOUNT #	TAXING AGENCY	CURRENT TAX SHARE	PERCENT	PROPOSED DIST SHARE	ALLOCATED SHARE	ADJUSTMENTS	NET SHARE
001.05	LOS ANGELES COUNTY GENERAL	0.226360637	22.6370 %	0.017375930	0.003933236	-0.004025549	0.222335088
001.20	L.A. COUNTY ACCUM CAP OUTLAY	0.000111252	0.0111 %	0.017375930	0.000001933	0.000000000	0.000111252
007.30	CONSOL. FIRE PRO.DIST.OF L.A.CO.	0.166529333	16.6529 %	0.017375930	0.002893602	-0.002893602	0.163635731
007.31	L A C FIRE-FFW	0.005201487	0.5201 %	0.017375930	0.000090380	0.000000000	0.005201487
030.10	L.A.CO.FL.CON.DR.IMP.DIST.MAINT.	0.001669389	0.1669 %	0.017375930	0.000029007	-0.000029007	0.001640382
030.70	LA CO FLOOD CONTROL MAINT	0.009447444	0.9447 %	0.017375930	0.000164158	-0.000164158	0.009283286
061.80	GREATER L A CO VECTOR CONTROL	0.000322715	0.0322 %	0.017375930	0.000005607	-0.000005607	0.000317108
068.05	ANTELOPE VY RESOURCE CONSER DIST	0.000000000	0.0000 %	0.017375930	0.000000000	0.000000000	0.000000000
249.01	CITY-SANTA CLARITA TD #1	0.056308214	5.6308 %	0.017375930	0.000978407	-0.000978407	0.055329807
249.56	CITY-SANTA CLARITA LIBRARY	0.022649405	2.2649 %	0.017375930	0.000393554	-0.000393554	0.022255851
302.01	SANTA CLARITA VALLEY WATER-CLWA	0.055844237	5.5844 %	0.017375930	0.000970345	-0.000970345	0.054873892
400.00	EDUCATIONAL REV AUGMENTATION FD	0.068990365	6.8990 %	0.017375930	0.001198771	EXEMPT	0.068990365
400.01	EDUCATIONAL AUG FD IMPOUND	0.133766009	13.3766 %	0.017375930	0.002324308	EXEMPT	0.133766009
400.15	COUNTY SCHOOL SERVICES	0.001379705	0.1379 %	0.017375930	0.000023973	EXEMPT	0.001379705
400.21	CHILDREN'S INSTIL TUITION FUND	0.002738230	0.2738 %	0.017375930	0.000047579	EXEMPT	0.002738230
665.01	SULPHUR SPRINGS UNION SCHOOL DIS	0.083973999	8.3973 %	0.017375930	0.001459126	EXEMPT	0.083973999
665.06	CO.SCH.SERV.FD.- SULPHUR SPRINGS	0.007200288	0.7200 %	0.017375930	0.000125111	EXEMPT	0.007200288
665.07	DEV.CTR.HDCPD-MINOR-SULPHUR SPGS	0.000795961	0.0795 %	0.017375930	0.000013830	EXEMPT	0.000795961
757.02	HART WILLIAM S UNION HIGH	0.078765207	7.8765 %	0.017375930	0.001368618	EXEMPT	0.078765207

ANNEXATION NUMBER: 1136

PROJECT NAME: A-SCV-1136

TRA: 06563

ACCOUNT #	TAXING AGENCY	CURRENT TAX SHARE	PERCENT	PROPOSED DIST SHARE	ALLOCATED SHARE	ADJUSTMENTS	NET SHARE
757.06	CO.SCH.SERV.FD.- HART,WILLIAM S.	0.000328335	0.0328 %	0.017375930	0.000005705	EXEMPT	0.000328335
757.07	HART,WILLIAM S.-ELEM SCHOOL FUND	0.041443794	4.1443 %	0.017375930	0.000720124	EXEMPT	0.041443794
814.04	SANTA CLARITA COMMUNITY COLLEGE	0.036173994	3.6173 %	0.017375930	0.000628556	EXEMPT	0.036173994
***067.35	STA CLRTA VLY SANIT DIS OF LA CO	0.000000000	0.0000 %	0.017375930	0.000000000	0.000000000	0.009460229
TOTAL:		1.000000000	100.0000 %		0.017375930	-0.009460229	1.000000000



February 15, 2024

Board of Directors
Santa Clarita Valley Sanitation District
of Los Angeles County

Directors:

**Consideration of Newhall Land and Farming Proposal Regarding Provision of
Regional Sewerage Service with Newhall Ranch Sanitation District**

In 2002, the Newhall Land and Farming Company (Newhall Land), also known as FivePoint, entered into an Interconnection Agreement with Sanitation District Nos. 26 and 32, now consolidated into the Santa Clarita Valley Sanitation District (SCVSD), regarding a plan for the coordination of wastewater management facilities relating to the Newhall Ranch development (Newhall Ranch). The Interconnection Agreement provides a roadmap for the provision of wastewater service for Newhall Ranch through a new Sanitation District, Newhall Ranch Sanitation District (NRSD). NRSD would be primarily served by a new treatment facility constructed by Newhall Land called the Newhall Ranch Water Reclamation Plant (WRP). Since the NRSD was not yet formed at the time, the Interconnection Agreement required a subsequent agreement, called the Joint Sewerage Services Agreement (JSSA), be entered into between SCVSD and NRSD to provide conditions under which the terms of the Interconnection Agreement are to be implemented. Pursuant to the JSSA, each District will own and operate wastewater facilities within its boundaries and make excess capacity available to the other District at the receiving District's standard rates. SCVSD may also obtain long-term use of the Newhall Ranch WRP, and NRSD can utilize SCVSD facilities prior to and potentially after construction of the Newhall Ranch WRP. The JSSA also allocates many of the rights and responsibilities related to the provision of wastewater service within the Newhall Ranch to NRSD. NRSD thus has the responsibility for ensuring Newhall Land constructs the agreed upon facilities for use by both NRSD and SCVSD.

Over the past few years, construction on the Newhall Ranch development has progressed but at a pace slower than originally envisioned. The Interconnection Agreement specifically provides for wastewater treatment of up to 6,000 NRSD capacity units at SCVSD's Valencia WRP until the Newhall Ranch WRP is built and operational. To date, NRSD has received sewer connection fees for approximately 1,700 capacity units within Newhall Ranch. Newhall Land is responsible for building the Newhall Ranch WRP and ensuring it is operational prior to reaching the 6,000-capacity unit limit for treatment at the Valencia WRP. Newhall Land has modified their development plans and indicated that they do not plan to exceed the 6,000-capacity unit threshold for many years. As such, Newhall Land has requested District's support for changes to Los Angeles (LA) County requirements related to the Newhall Ranch sewerage system development timeline requirements to reflect their current implementation schedule and has offered alternative considerations to offset impacts the changes may have on SCVSD. This letter provides background on Newhall Land's proposal and the future actions to be considered.

Newhall Land Proposal

Newhall Land has requested SCVSD staff provide a letter to LA County indicating certain interim milestones related to construction of the Newhall Ranch WRP in their Conditional Use Permit for Newhall Ranch, namely having to begin grading of the WRP site at 3,000 capacity units and begin construction at 4,000 capacity units, are no longer necessary. Newhall Land has made this request because they intend to construct approximately 5,600 units and then stop construction within the development and direct their focus on their other developments outside of Newhall Ranch.

The interim milestones were established to protect SCVSD by ensuring progress is made on the Newhall Ranch WRP so that the Valencia WRP does not need to provide treatment to NRSW wastewater indefinitely. Newhall Land's request would not change the 6,000-capacity unit threshold to build the Newhall Ranch WRP, but potentially allows the developer to postpone start of construction of the WRP to align with their current development schedule. The primary benefit to SCVSD in entering into the Interconnection Agreement was the ability to access the Newhall Ranch WRP site to develop new treatment facilities if needed in the future, since the existing Saugus and Valencia WRP sites are essentially built out. Eliminating these milestones would likely result in SCVSD having to treat NRSW sewage for a longer period of time and delay SCVSD access to the Newhall Ranch WRP site for many years.

However, per the JSSA, SCVSD must pay for any facilities necessary for its own access to NRSW facilities, including construction of pipeline capacity and treatment facilities at the Newhall Ranch WRP to meet SCVSD needs. SCVSD has not budgeted for, nor does it currently anticipate a need to access these facilities in the next ten years and will need to conduct planning studies to determine if there is a potential need to do so long-term. In exchange for SCVSD's support, Newhall Land, on behalf of NRSW, has also offered to co-fund the planning studies that SCVSD will conduct to determine future property needs. If these studies indicate that land is needed for new treatment facilities, Newhall Land has also offered SCVSD the option to purchase land they own adjacent to the Valencia WRP that may be useful to SCVSD in the future. The option sets the purchase price at fair market value or other agreed upon terms.

Proposed Board Action

The Chief Engineer & General Manager will discuss with the Board at the February 20, 2024, Board meeting and seek input on the proposal for possible future agreements with Newhall Land and NRSW.

Very truly yours,



Robert C. Ferrante

RCF:RLT