

Notice and Agenda

REGULAR MEETING — BOARD OF DIRECTORS — COUNTY SANITATION DISTRICT NO. 2

To be held in person and via teleconference per Brown Act, Section 54953(b)&(c), at the:

OFFICE OF THE DISTRICT 1955 Workman Mill Road Whittier, CA 90601 and KENNETH HAHN HALL OF ADMINISTRATION\* Conference Room 864 500 W. Temple Street Los Angeles, CA 90012

For the public to join the meeting virtually, click https://us02web.zoom.us/j/8091438308 or enter the Meeting ID 809 143 8308 into the Zoom app on your smartphone or computer. Alternatively, you may join by phone by calling (669) 900-9128 and entering the Meeting ID. The meeting is not required to be broadcast via Zoom, but as a courtesy for public attendance. You may find further information at: http://www.lacsd.org/agendas

THE DISTRICT MAY TAKE ACTION ON ANY AGENDA ITEM LISTED BELOW

Table with 3 columns: Governing Body, Director, and Alternate. Lists districts from ALHAMBRA to LOS ANGELES COUNTY and their respective directors and alternates.

CONSENT AGENDA

- 1. Public Comment
2. Receive and Order Filed Action Appointing Ms. Kathryn Barger as Temporary Alternate Director of the Board of Supervisors of the County of Los Angeles
3. Approve Minutes of Regular Meeting Held June 14, 2023
4. Authorize Payment to Lewis, Brisbois, Bisgaard & Smith LLP, in Amount of \$201,926.10, for Legal Services Rendered and Reimbursement of Expenses Advanced in Various Districts' Matters for Month of April 2023
5. Approve Plans and Call for Bids for Construction of San Jose Creek Water Reclamation Plant (WRP) Stage III Primary Sedimentation System Expansion (Project); Authorize Chief Engineer and General Manager to Establish Date for Receipt of Bids

Summary: The proposed Project will provide increased wet weather treatment capacity and add redundancy to the influent pumping system at San Jose Creek WRP. The Project will include construction of two primary sedimentation tanks and associated equipment, extension of an existing channel and gallery and concrete repair and installation of a protective plastic liner at various channels. To comply with the California Environmental Quality Act, a Mitigated Negative Declaration was previously approved for the Project by the Board on March 8, 2023. This item is consistent with the Districts' Guiding Principles to protect financial and facility assets through prudent investment and maintenance programs; and commitment to operational excellence (protection of public health and the environment, regulatory compliance, and cost effectiveness).

**REGULAR AGENDA**

1. Re: Contract with Insituform Technologies, LLC, in Amount of Approximately \$490,653 for Construction of *La Mirada Trunk Sewer Rehabilitation Phase I* (Project)

- (a) Report on Bids and Award and Order Executed Contract
- (b) Order Staff to Review Insurance and Surety Bonds for Performance and Payment and, if Sufficient, Order Secretary to Execute Contract Evidencing Approval of Bonds and Insurance

Summary: The Project will consist of rehabilitation of approximately 2,817 feet of 18- and 24-inch diameter corroded concrete pipe and appurtenant structures that were constructed in 1953. The work is located within the Cities of La Mirada, Norwalk, and Santa Fe Springs as shown on the attached map. The bid summary/recommendation to award is attached. Staff has determined that the Project is exempt or otherwise not subject to the provisions of the California Environmental Quality Act (CEQA) pursuant to California Public Resources Code Sections 21080(b)(4) and Title 14 of the California Code of Regulations (“CEQA Guidelines”) Section 15301. This item is consistent with the Districts’ Guiding Principles to protect financial and facility assets through prudent investment and maintenance programs; and commitment to operational excellence (protection of public health and the environment, regulatory compliance, and cost effectiveness).

2. Authorize Issuance of Purchase Orders as Follows:

- (a) To Bargas Environmental Consulting, LLC, (Bargas) in Amount of Approximately \$120,000 for On-Call Professional Cultural Resources Support Services for Various Projects

Summary: Consulting services are necessary to provide specialized expertise for required archeological and paleontological surveys and construction monitoring activities for various wastewater and solid waste projects. It is more cost and time effective to use an on-call consultant to perform these services rather than to issue separate requests for proposals for each project due to their small size. Proposals were solicited from 14 qualified firms and 8 were received. Bargas was the highest ranked firm based on technical qualifications and cost. Costs for these services will be apportioned to various Districts according to the project or facility served. This item is consistent with the Districts’ Guiding Principle of commitment to operational excellence (protection of public health and the environment, regulatory compliance, and cost effectiveness).

- (b) To Horizons Construction Co. International, Inc., in Amount of Approximately \$212,700 for *Demolition of In-Vessel Composter at Joint Water Pollution Control Plant (JWPCP)* (Project)

Summary: An In-Vessel Composter was operated as a research facility at the JWPCP in the 1990s. The facility was ultimately decommissioned because it was deemed financially nonviable and has occupied space on the JWPCP property for over 20 years. The Project will include demolition and disposal of concrete structures and associated equipment and will recover a buildable space for future expansion. Pursuant to authority previously granted by the Board, the Project will be completed utilizing the Job Order Contracting Program which relies on pre-established competitively-bid construction tasks that will accelerate project delivery and reduce administration and design costs. Staff has determined that the activities described herein are exempt or otherwise not subject to the provisions of the California Environmental Quality Act (CEQA) pursuant to California Public Resources Code Section 21084 and Title 14 of the California Code of Regulations (“CEQA Guidelines”) Section 15301. This item is consistent with the Districts’ Guiding Principles to protect financial and facility assets through prudent investment and maintenance programs; and commitment to operational excellence (protection of public health and the environment, regulatory compliance, and cost effectiveness).

- (c) To National Auto Fleet Group (NAFG) in Amount of Approximately \$755,639 for 16 Medium-Duty Vehicles

Summary: These medium-duty vehicles are required for operating and maintaining Districts’ facilities. On November 9, 2022, the Board approved issuance of purchase orders to Downtown Ford Sales for 20 Ford medium-duty vehicles and Watsonville Fleet Group for 16 Ford medium-duty vehicles. The two dealers only accepted purchase orders for 20 of the 36 vehicles due to Ford Motor Company limiting allocation of 2023 model year medium-duty vehicles. Staff recommends the purchase of the remaining 16 vehicles from General Motors through Sourcewell Cooperative Purchasing Agreements (Sourcewell) since recent purchases of these types of vehicles have proven to be the most cost-effective means of procurement. NAFG has the Sourcewell contract for General Motors vehicles, which includes the Chevrolet Silverado medium-duty vehicles. These purchases will be for truck chassis only. Bids will be solicited for the required upfits including utility bodies and ancillary equipment. This item is consistent with the Districts’ Guiding Principle of commitment to operational excellence (protection of public health and the environment, regulatory compliance, and cost effectiveness).

## 2. Contd.

- (d) To Fuji Industrial Services (FIS) in Amount of Approximately \$2,226,000 to Conduct Seven-Year Major Overhaul of Steam Turbine and Auxiliary Equipment at Joint Water Pollution Control Plant (JWPCP)

Summary: The Total Energy Facility at the JWPCP is equipped with three gas turbines and one steam turbine. The Shin-Nippon Machinery Company (SNM) 8.7MW steam turbine, which was installed in 2012 and last overhauled in 2017, will soon complete seven years of continuous operation. The manufacturer recommends a five-to-seven-year major overhaul of the steam turbine and all auxiliary equipment. FIS is the repair subsidiary of SNM and will perform all overhaul work to ensure that the steam turbine and all auxiliary equipment are returned to as-new condition. This overhaul will provide long-term reliability of the steam turbine. Staff has determined that the activities described herein do not constitute a "Project" under the California Environmental Quality Act (CEQA) pursuant to California Public Resources Code Section 21065 and Title 14 of the California Code of Regulations ("CEQA Guidelines") Section 15301 and 15302. This item is consistent with the Districts' Guiding Principles to protect financial and facility assets through prudent investment and maintenance programs; and commitment to operational excellence (protection of public health and the environment, regulatory compliance, and cost effectiveness).

3. Authorize Issuance of Purchase Orders with Rite-Way Roofing Corporation for Roof Replacements at Joint Water Pollution Control Plant (JWPCP) as Follows:

- (a) For Construction Management and Industrial Waste Building for Approximately \$128,198  
(b) For Electrical and Instrumentation Building for Approximately \$405,383

Summary: The existing roofs on the Construction Management and Industrial Waste Buildings, which is approximately 30 years old, and the Electrical and Instrumentation Building, which is approximately 40 years old, are in poor condition and spot repairs are no longer adequate to prevent water leaks. Pursuant to authority previously granted by the Board, the project will be completed utilizing the Job Order Contracting Program which relies on pre-established competitively bid construction tasks that will accelerate project delivery and reduce administration and design costs. Staff has determined that the Project is exempt or otherwise not subject to the provisions of the California Environmental Quality Act (CEQA) pursuant to Title 14 of the California Code of Regulations ("CEQA Guidelines") Sections 15301 and 15378. This item is consistent with the Districts' Guiding Principle to protect financial and facility assets through prudent investment and maintenance programs.

4. Authorize Issuance of Supplemental Purchase Order (PO) to Old River Farming, LLC, (ORF) in Amount of Approximately \$4,400,000 to Provide Farming Operation and Property Maintenance Services at Tulare Lake Compost (TLC)

Summary: The Board previously authorized a PO to ORF in September 2022 to provide farming and other property management services at TLC. ORF has performed satisfactorily under the current PO, including successfully farming approximately 2,700 acres to produce feed crops. The historic storms and snowpack earlier this year now allow for substantially increased water availability at low cost, which would facilitate an expansion of the current farming operations. This proposed expansion, which would include farming an additional 6,200 acres at TLC, would effectively utilize the large stockpile of finished compost at the facility as well as take up residual nitrogen in the soil resulting from previous applications of compost. Additional funds in the amount of approximately \$4,400,000 are needed for ORF to farm the additional acres. Sale of the resulting feed crops would result in revenue to the Districts that will greatly defray this additional cost. Staff has determined that the Project is exempt or otherwise not subject to the provisions of the California Environmental Quality Act (CEQA) pursuant to Title 14 of the California Code of Regulations ("CEQA Guidelines") Section 15301. This item is consistent with the Districts' Guiding Principles of commitment to operational excellence (protection of public health and the environment, regulatory compliance, and cost effectiveness); and to maximize use of our assets and resources (recycled water, recyclables, and energy).

5. Approve Change Orders Nos. 8 and 9 to Contract No. 5377 with Spiniello Infrastructure West, Inc., for Construction of *District 2 Interceptor Trunk Sewer Rehabilitation* (Project); Resulting in Total Payment of \$1,004,249.83 for Extra Work

Summary: As part of the Project, the contractor was required to rehabilitate existing 48-, 54-, and 57-inch-diameter concrete pipe by constructing access shafts at strategic locations and inserting fiberglass reinforced polymer (FRP) pipe within the deteriorated pipe. During construction, it was determined that at four locations where the pipe alignment was curved, the contractor would not be able to install the FRP pipe as originally specified due to the manufacturing limitations associated with the liner pipe. The contractor was therefore directed to construct additional access shafts at these four locations to facilitate the FRP pipe installation. Separately, Districts' survey crews are responsible for marking the exact locations of the access shafts which are needed for this Project by the contractor. At two discrete sites, Districts' survey crews marked the location of the access shafts incorrectly because the record drawings

## 5. Contd.

were inaccurate. This error was not discovered until after the contractor had already begun construction of the access shafts. The contractor was therefore directed to relocate the access shafts to the correct locations to complete the work. These items are consistent with the Districts' Guiding Principles to protect financial and facility assets through prudent investment and maintenance programs; and commitment to operational excellence (protection of public health and the environment, regulatory compliance, and cost effectiveness).

6. Adopt *An Ordinance Prescribing Fee and Charge Rates for Solid Waste Management Activities at the Scholl Canyon Landfill* (SCLF) (Ordinance) and find that Ordinance is Exempt from California Environmental Quality Act Under Public Resources Code Section 21080(b)(8) because Rates and Charges are for Purpose of Meeting Operational Expenses, Purchasing Equipment, and Funding Capital Projects Necessary to Maintain Services within Existing Service Areas

Summary: The District operates the SCLF on behalf of the City of Glendale (City) and the County of Los Angeles (County) under a joint powers agreement. Approximately 50 percent of the tipping fee revenue funds the landfill's operating and capital costs, with the remainder paid to the City in the form of host payments and lease payments. The District operates at cost and is not responsible for shortfalls in revenue. A letter describing the recommended Board action and the rate increases planned was provided to the Directors prior to the introduction of the Ordinance at the Board's regular meeting on June 14, 2023. A copy of the letter and the proposed Ordinance accompanies the agenda. The Ordinance would increase the municipal solid and inert waste rate at the SCLF from \$76.37 per ton to \$95.46 per ton, effective August 1, 2023. Changes to the rates for hard-to-handle and bulky items, special handling, and pull-offs are also proposed. The proposed rate increases are necessary to offset increasing operational and capital costs. The City and County have concurred with the increases. This item is consistent with the Districts' Guiding Principles of commitment to fiscal responsibility and prudent financial stewardship; and to plan for both short-term and long-term needs to minimize the need for significant rate increases.

7. Adopt Amended Resolution Setting Salaries and Benefits for Fiscal Year 2023-24 for District Employees Consistent with Agreements Approved by Districts' Collective Committee

Summary: Labor agreements establishing cost of living adjustment formulas for all District employees were previously approved by the Collective Committee, comprised of the Directors of all Districts. The cost-of-living adjustment formula contained in the agreements results in an increase of 3.5 percent based on a 3.7 percent increase in the Consumer Price Index for All Urban Consumers in Los Angeles-Riverside-Orange County for the 12-month period ending March 2023. The proposed [Salary Resolution](#), which is linked, incorporates the salary increases effective July 1, 2023, for all classes.

8. CLOSED SESSION – *Conference with Legal Counsel Pursuant to Government Code Section 54956.9(d)(4) – Potential Litigation Regarding Scholl Canyon Landfill (SCLF)*

Summary: The Chief Engineer and General Manager and District Counsel will discuss this matter in closed session.

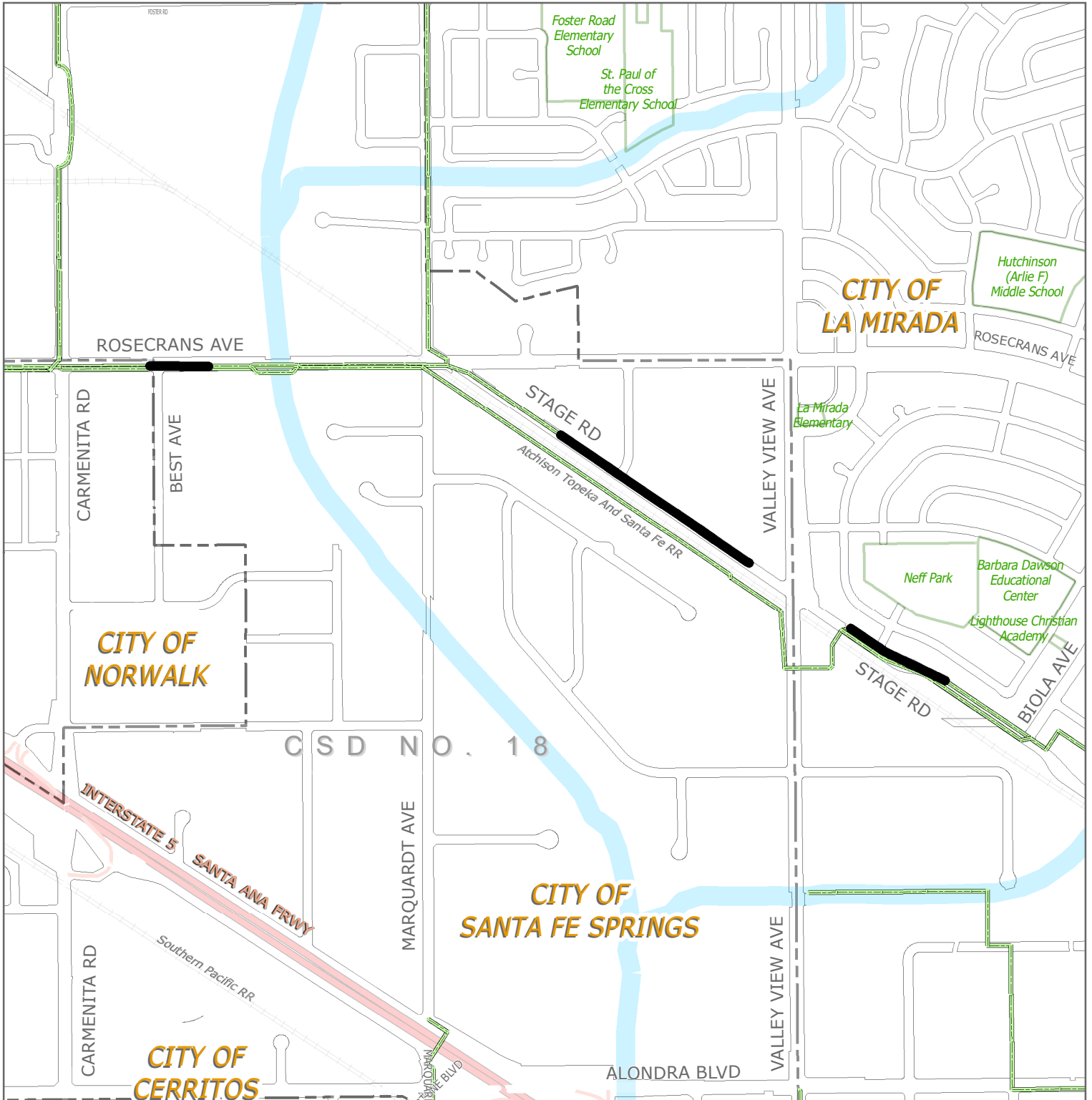
## Adjourn

**Status Report:** Prior to or during the meeting session, the Chief Engineer and General Manager may update the Directors on various matters concerning the Districts that may be of current interest to the Directors.

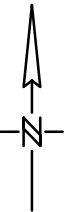
**Public Comment:** Members of the public may address the Board of Directors on any item shown on the agenda or matter under the Board's authority. A "Request to Address Board of Directors" form is available. In compliance with the Americans with Disabilities Act, if you require special assistance to participate in this meeting, please contact the Secretary to the Boards' Office (562) 908-4288, extension 1100. Notification of 48 hours prior to the meeting will enable staff to make reasonable arrangements to ensure accessibility to this meeting. (28CFR 35.101 et seq. ADA Title II).

**Document Requests:** Links to supporting documents are available online at the time of posting. Agendas and supporting documents or other writings that will be distributed to Board members in connection with matters subject to discussion or consideration at this meeting that are not exempt from disclosure under the Public Records Act are available for inspection following the posting of this agenda at the office of the Secretary to the Boards of Directors located at the Districts' Joint Administration Building, 1955 Workman Mill Road, Whittier, California, 90601, or at the time of the meeting at the address posted on this agenda.

# LA MIRADA TRUNK SEWER REHABILITATION PHASE I



— PROJECT ROUTE



TO: BOARD OF DIRECTORS OF LOS ANGELES  
COUNTY SANITATION DISTRICT NO. 2

RE: AGENDA ITEM NO. R-1(a)

FOR BOARD MEETING June 28, 2023

BIDS were received at the District Office on June 6, 2023

FOR La Mirada Trunk Sewer Rehabilitation Phase I

No. of Bids Received: 3

<u>BIDDER</u>	<u>TOTAL BID</u>
Insituform Technologies, LLC	<u>\$490,653.00</u>
Sancon Technologies, Inc.	\$571,161.00
Nor-Cal Pipeline Services	\$970,585.00

RECOMMENDATION:

Award contract to Insituform Technologies, LLC, low bidder, in the amount of \$490,653.00.

Engineer's Estimate: \$775,000.00



Robert C. Ferrante  
Chief Engineer and  
General Manager



**LOS ANGELES COUNTY  
SANITATION DISTRICTS**  
*Converting Waste Into Resources*

**Robert C. Ferrante**  
Chief Engineer and General Manager

1955 Workman Mill Road, Whittier, CA 90601-1400  
Mailing Address: P.O. Box 4998, Whittier, CA 90607-4998  
(562) 699-7411 • www.lacsd.org

June 8, 2023

Board of Directors  
County Sanitation Districts Nos. 1, 2, 3, 5, 8, 15, 16, 17, 18,  
19, 21, 22, 23, 29, and South Bay Cities Sanitation District

Dear Directors:

**Rate Increase for Scholl Canyon Landfill**

The agenda for the June 14, 2023, meeting of the Board of Directors of Sanitation District No. 2 includes an item to consider introducing a new Rate Ordinance (Ordinance) for Scholl Canyon Landfill (Landfill).

The District operates the Landfill on behalf of the City of Glendale and the County of Los Angeles under a joint powers agreement. Approximately 50% of the tipping fee revenue funds the landfill's operating and capital costs, with the remainder paid to the City in the form of host payments and lease payments. The District operates at cost and is not responsible for shortfalls in revenue.

The proposed Ordinance would increase the Municipal Solid and Inert Waste (MSW) rate from \$76.37 per ton to \$95.46 per ton. Changes to the rates for Hard-to-Handle and Bulky Items, Special Handling, and Pull-Offs, are also proposed. A schedule of the current and proposed rates is attached. The proposed Ordinance is attached to the agenda. If approved, the new Ordinance would take effect August 1, 2023.

The proposed rate increases are necessary to offset increasing operational and capital costs. The District originally recommended an increase of 50% primarily due to significantly higher costs than anticipated for construction of the type of final landfill cover requested by the City. The City approved an increase of 25%. Discussions with the City to determine the funding source for the cover are ongoing.

Should any Director have questions regarding the new rates, please contact me or Mr. Mark Revilla, Solid Waste Management Department Head, at extension 2415.

Very truly yours,

Robert C. Ferrante

RCF:gc  
Attachment

**SCHOLL CANYON LANDFILL RECOMMENDED  
MSW AND RECYCLABLES RATES**

	<b>Current Rate</b>	<b>Rate Effective August 1, 2023</b>
Municipal Solid and Inert Waste	\$76.37 per ton	\$95.46 per ton
Hard-to-Handle, Bulky Items	\$91.37 per ton	\$110.46 per ton
Segregated Uncontaminated Green Waste	\$115.13 per ton	\$115.13 per ton
Food Waste/Green Waste Program	\$136.05 per ton	\$136.05 per ton
Tires	\$134.73 per ton	\$134.73 per ton
Special Handling	\$91.37 per ton	\$110.46 per ton
Clean, Segregated Asphalt	\$30.00 per ton	\$30.00 per ton
Clean Dirt	\$8.00 per ton \$20.00 per load	\$8.00 per ton \$20.00 per load
Pull-Offs	\$50.14 per load	\$54.40 per load

Notes:

- 1) Uncovered Loads Capable of Producing Litter and Non-Manifested Tire Loads: \$5.40 per ton or \$5.40 per load surcharge.
- 2) All rates include the following state, county and local fees and taxes (fees expressed on a per ton basis do not apply to Green Waste, Asphalt, Clean Dirt, Food Waste and Pull-Offs):
  - California Integrated Solid Waste Management Fee: \$1.40 per ton
  - Los Angeles County Solid Waste Management Fee: \$1.50 per ton
  - Los Angeles County Department of Health Services Regulatory Service Fee: \$0.41 per ton
- 3) All rates and surcharges include the City of Glendale – Scholl Canyon Landfill Assessment: 25% of gross receipts; vehicles owned and operated by the City of Glendale are exempt.
- 4) Rates for materials that benefit the operation of the facility or that promote solid waste management alternatives are subject to change without notice.
- 5) All Food Waste placed with Green Waste must be in plastic bags.
- 6) Rates are for a 1-ton minimum charge, excepting Tires and Special Handling.



**AN ORDINANCE PRESCRIBING FEE AND CHARGE RATES  
FOR SOLID WASTE MANAGEMENT ACTIVITIES  
AT THE SCHOLL CANYON LANDFILL**

**THE BOARD OF DIRECTORS OF COUNTY SANITATION DISTRICT NO. 2 OF LOS ANGELES COUNTY ORDAINS AS FOLLOWS:**

**SECTION 1. SHORT TITLE**

This Ordinance shall be known as the *Scholl Canyon Landfill Solid Waste Rate Ordinance*.

**SECTION 2. PURPOSE**

The purpose of this Ordinance is to establish the fee and charge rates prescribed by the County Sanitation District No. 2 of Los Angeles County for the Scholl Canyon Landfill, and to provide for customer credit agreements.

**SECTION 3. FEES AND CHARGES**

The following fee and charge rates are hereby prescribed for the Scholl Canyon Landfill, effective August 1, 2023:

Municipal Solid and Inert Waste (1-ton minimum charge)	\$ 95.46 per ton
Hard-to-Handle, Bulky Items (1-ton minimum charge)	\$ 110.46 per ton
Tires	\$ 134.73 per ton
Special Handling	\$ 110.46 per ton
Pull-offs	\$ 54.40 per load

**SECTION 4. UNCOVERED LOADS AND NON-MANIFESTED TIRE LOADS**

A surcharge of \$5.40 per ton, subject to a minimum charge of \$5.40 per load, will be charged with respect to all uncovered loads capable of producing litter.

A surcharge of \$5.40 per ton, subject to a minimum charge of \$5.40 per load, will be charged with respect to all non-manifested tire loads.

**SECTION 5. RECYCLABLE MATERIALS**

- 5.1 The District's Chief Engineer and General Manager shall have the authority to adjust any fee or charge rate for the acceptance of materials determined to be of benefit to the operation of the facility, or which would promote solid waste management alternatives. These materials may include but are not restricted to dirt suitable for cover material; segregated shredded or unshredded organic material suitable for composting, cover material, or recycling; broken asphaltic concrete; various other recyclable materials; and like substances.
- 5.2 The Chief Engineer shall determine the materials and services that are eligible for a rate adjustment and the amount of the rate adjustment. The Chief Engineer shall make the determination in writing, and it will be made available to members of the public on request.

**SECTION 6. CREDIT AGREEMENTS**

The Chief Engineer may offer credit agreements to solid waste facility customers for payment of fees and charges. The Chief Engineer shall establish and enforce policies for administration of credit agreements, subject to all applicable laws and regulations.

**SECTION 7. COLLECTION OF FEES PURSUANT TO THE PUBLIC RESOURCES CODE**

All fees and charges specified in Section 3 of this Ordinance include an amount necessary to cover fees required pursuant to Sections 48000 through 48008 of the Public Resources Code (imposed by the State of California under Section 48000), Sections 40900 through 41956 of the Public Resources Code (imposed by the County of Los Angeles under Section 41901), and Sections 43200 through 43610.1 of the Public Resources Code (imposed by the County of Los Angeles under Section 43213).

**SECTION 8. COLLECTION OF FEES AND TAXES PURSUANT TO LOS ANGELES COUNTY ORDINANCES**

All fees and charges specified in this Ordinance include an amount necessary to collect fees imposed by the County of Los Angeles pursuant to Los Angeles County Ordinances Nos. 2008-0056 and 2011-0042.

**SECTION 9. COLLECTION OF FEES PURSUANT TO CITY OF GLENDALE ORDINANCE**

All fees and charges specified in Sections 3, 4, and 5 of this Ordinance include an amount necessary to collect fees imposed by the City of Glendale pursuant to City of Glendale Ordinance No. 5282.

**SECTION 10. COLLECTION OF REVISED OR NEW FEES AND TAXES**

The District’s Chief Engineer and General Manager shall have the authority to increase or decrease, as appropriate and at any time, any fees and charges specified in Sections 3, 4, or 5 of this Ordinance by an amount estimated to equal any revision in the fees or taxes specified in Sections 7, 8, and 9 of this Ordinance, or by an amount estimated to equal any mandatory new fees or taxes imposed by federal, state, or local government which must be paid by County Sanitation District No. 2 of Los Angeles County as operator of the Scholl Canyon Landfill.

**SECTION 11. SUPERSESSION**

This Ordinance shall supersede any fees or charges relating to the Scholl Canyon Landfill imposed pursuant to the Scholl Canyon Landfill Solid Waste Rate Ordinance adopted January 25, 2023.

**SECTION 12. EFFECTIVE DATE**

This Ordinance shall become effective on August 1, 2023.

ATTEST:

---

Clerk of the Board of Directors  
County Sanitation District No. 2  
of Los Angeles County

---

Chairperson, Board of Directors  
County Sanitation District No. 2  
of Los Angeles County

PASSED AND ADOPTED by the Board of Directors of County Sanitation District No. 2 of Los Angeles County on \_\_\_\_\_, by the following vote:

AYES:

NOES:

ABSTAIN:

ABSENT: