

Notice and Agenda

REGULAR MEETING — BOARD OF DIRECTORS — SANTA CLARITA VALLEY
SANITATION DISTRICT

To be held at the SANTA CLARITA CITY HALL
23920 Valencia Boulevard, Santa Clarita, California

THE DISTRICT MAY TAKE ACTION ON ANY AGENDA ITEM LISTED BELOW

| TUESDAY | June 20, 2023 | At 11:00 A.M. |
|--------------------|---------------------|---------------|
| Governing Body | Director | Alternate |
| SANTA CLARITA | GIBBS | MC LEAN |
| SANTA CLARITA | WESTE (Chairperson) | MC LEAN |
| LOS ANGELES COUNTY | HAHN | BARGER |

1. Public Comment
2. Approve Minutes of Regular Meeting Held May 15, 2023
3. Approve March 2023 Expenses in Amount of \$6,156,662

Summary: Local District expenses represent costs that are the sole responsibility of the individual District. Allocated expenses represent the District's proportionate share of expenses made by District No. 2, the administrative District, on its behalf pursuant to the Joint Administration Agreement. This Agreement provides for the joint administration and technical support for all of the signatory Districts along with the methodology for determining the proportionate costs for each District. A listing of Districts' payments and previously approved budgets can be found on the Districts' website at lacsdc.org/financial-documents. This item is consistent with the Districts' Guiding Principle of commitment to fiscal responsibility and prudent financial stewardship.

| | |
|--------------------------|--------------------|
| Local District Expenses: | |
| Operations & Maintenance | \$2,006,940 |
| Capital | 3,553,451 |
| Allocated Expenses: | |
| Joint Administration | 221,451 |
| Technical Support | 374,820 |
| Total Expenses | <u>\$6,156,662</u> |

4. Report on Proposals for Advanced Water Treatment Facility Brine Hauling from Valencia Water Reclamation Plant to Joint Water Pollution Control Plant (Project); Reject Proposal and Re-Advertise

Summary: To comply with the California Environmental Quality Act, an Environmental Impact Report was previously approved for the Project by the Santa Clarita Valley Sanitation District Board on August 30, 2017. The proposal summary/recommendation to reject proposal and re-advertise is attached.

5. Re: Annexations Nos. 1113, 1121, 1122, and 1129 to District
 - (a) Adopt Resolutions for Making Application to Local Agency Formation Commission (LAFCO) for Annexation; Review, Consider and Find Adequate [California Environmental Quality Act \(CEQA\) Document for Annexation No. 1113](#); Review, Consider and Find Adequate [CEQA Document for Annexation No. 1122](#); and Consent to Waiver of Protest Proceedings
 - (b) Adopt Joint Resolution with County of Los Angeles, Greater Los Angeles County Vector Control District, City of Santa Clarita, Santa Clarita Library, and Santa Clarita Valley Water Agency Approving and Accepting Negotiated Exchange of Property Tax Revenues Resulting from Annexation No. 1113
 - (c) Adopt Joint Resolution with County of Los Angeles, Greater Los Angeles County Vector Control District, City of Santa Clarita, Santa Clarita Street Lighting Maintenance District No. 2, Santa Clarita Library, and Santa Clarita Valley Water Agency Approving and Accepting Negotiated Exchange of Property Tax Revenues Resulting from Annexation No. 1121
 - (d) Adopt Joint Resolutions with County of Los Angeles, Greater Los Angeles County Vector Control District, Antelope Valley Resource Conservation District, and Santa Clarita Valley Water Agency Approving and Accepting Negotiated Exchange of Property Tax Revenues Resulting from Annexations Nos. 1122 and 1129

Summary: Annexation No. 1113 consists of 83 proposed assisted living apartments, and Annexation No. 1121 consists of 27 existing single-family homes, both in the City of Santa Clarita. Annexation No. 1122 consists of 137 proposed single-family homes, and Annexation No. 1129 consists of nine

5. Contd.

proposed apartments, both in Unincorporated Los Angeles County. Each annexation to the District's service area requires adoption of two resolutions by the Board. The first resolution authorizes submittal of the annexation application to LAFCO, approves the CEQA document (if applicable), and consents to a waiver of the LAFCO protest hearing. The second resolution is a joint resolution with agencies that already provide services to the proposed annexation territory agreeing to the amount of property tax revenue that will be apportioned to the District in accordance with the Revenue and Taxation Code. A data sheet, map, and Notice of Finding for each annexation are attached. Links to the CEQA documents for Annexations Nos. 1113 and 1122 are provided above.

6. Authorize Issuance of Purchase Orders as Follows:

- (a) To Sulzer Pump Services (US) Inc. (Sulzer) in Amount of Approximately \$117,285 to Furnish One Filter Feed Pump at Valencia Water Reclamation Plant (WRP)

Summary: The filter feed pumps at the Valencia WRP are used to pump secondary effluent through the pressure filters as part of the tertiary treatment process. Filter Feed Pump No. 3, which is over 50 years old, recently failed. Instead of refurbishing a pump that has reached the end of its service life, it is recommended that it be replaced with a new pump. Sulzer is the original equipment manufacturer for these pumps and can provide a pump that matches the existing layout and control system. Purchasing a new pump will maintain reliable operation of the tertiary treatment process. This item is consistent with the Districts' Guiding Principles of commitment to fiscal responsibility and prudent financial stewardship; and commitment to operational excellence (protection of public health and the environment, regulatory compliance, and cost effectiveness).

- (b) To Environmental Science Associates (ESA) in Amount of Approximately \$396,000 for Environmental Consulting Services in Support of *Valencia Water Reclamation Plant (WRP) Middle Section Retaining Wall Ground Improvements Project* (Project)

Summary: The proposed Project will improve approximately 1,000 feet of the middle section of the existing retaining wall along the Valencia WRP boundary adjacent to the Santa Clara River. This portion of the wall is susceptible to damage due to a significant flood event or a large earthquake, and structural enhancements are needed to protect the Valencia WRP. Specialized consulting services are needed to assess the potential environmental impacts of constructing the wall improvements, prepare the necessary documents to comply with the California Environmental Quality Act and support obtaining permits from the California Department of Fish and Wildlife. Proposals were solicited from 35 qualified environmental consulting firms and 3 were received. ESA was ranked as the most qualified to provide the required services and submitted a cost-effective proposal. This item is consistent with the Districts' Guiding Principle of commitment to operational excellence (protection of public health and the environment, regulatory compliance, and cost effectiveness).

7. Approve Change Order No. 13 to Contract No. 5288 with Schneider Electric Buildings America's, Inc., for Construction of *Valencia Water Reclamation Plant North Aeration Process Improvements* (Project); Resulting in Payment of \$248,330 for Extra Work

Summary: As part of the Project, the contractor was required to upgrade and replace various electrical distribution equipment associated with the new process air compressors, including a low voltage switchboard. Prior to construction, it was determined that an increase in the electrical rating of the switchboard was needed to accommodate planned future loads and to ensure proper operation. The contractor was therefore directed to modify the switchboard by increasing the main bus rating, adding spare feeder breakers, and adding protective relays and monitors. This item is consistent with the Districts' Guiding Principles to protect financial and facility assets through prudent investment and maintenance programs; and commitment to operational excellence (protection of public health and the environment, regulatory compliance, and cost effectiveness).

8. Approve and Order Executed [Second Amendment to the Interim Demineralization Facility Operations Agreement](#) (Second Amendment) with Newhall Land and Farming Company (Newhall) for Newhall Ranch Specific Plan (Project) Consistent with Board's Findings with Regard to Joint Sewerage Service Agreement Adopted on November 30, 2017

Summary: In May 2018, the Board approved the Interim Demineralization Facilities Operation Agreement (Agreement) that provided for Newhall to construct and operate an interim facility to reduce chloride levels in wastewater that will be generated by the Mission Village phase of the Project and treated at the Valencia Water Reclamation Plant (WRP). In October 2021, the Board approved a First Amendment to the Agreement that allowed Newhall to delay construction of the Interim Demineralization Facility (IDF) and construct a Temporary Demineralization Facility (TDF) on property they own adjacent to Valencia WRP. Newhall is now proposing to further delay construction of the IDF and expand the TDF. The Second Amendment will allow for Newhall to construct and operate the proposed expanded temporary facilities and requires Newhall

8. Contd.

to reimburse all District's costs. This Project will benefit the District and environment by improving the quality of water discharged to the Santa Clara River. To comply with the California Environmental Quality Act (CEQA), Newhall prepared Environmental Impact Reports (collectively the "EIR"). Staff from the District has independently reviewed and analyzed the EIR, and a resolution containing CEQA findings was previously approved by the Board on November 30, 2017. This item is consistent with the Districts' Guiding Principle of commitment to operational excellence (protection of public health and the environment, regulatory compliance, and cost effectiveness).

9. Re: Construction of Saugus Water Reclamation Plant UV Disinfection Facilities (Project)

- (a) Approve and Order Executed [Settlement and Release Agreement](#) with Stanek Constructors, Inc., Related to Contract No. 5142; Resulting in Payment of \$350,000
- (b) Accept Contract No. 5142 and Order Final Payment to Stanek Constructors, Inc., for Construction of *Saugus Water Reclamation Plant (WRP) UV Disinfection Facilities* (Project): Resulting in Total Contract Amount of \$7,753,152.86

Summary: This Project provided an ultraviolet (UV) disinfection system at Saugus WRP as part of the Chloride Compliance Facilities to comply with the Los Angeles Regional Water Quality Control Board's final effluent chloride requirements. The Project consisted of construction of four closed-vessel UV reactors, a new electrical building, and modifications to existing chemical systems, and ancillary equipment and structures. Construction began in December 2018 and was completed in May 2022. Thirty-three change orders totaling \$673,152.86 were approved for this Project. During the Project, the Contractor encountered excessive construction related delays primarily attributed to equipment startup, coordination with third parties for power supply, and various differing site conditions. With all work on the Project now complete, a *Settlement and Release Agreement* is necessary to formally settle all matters related to unresolved delay and extra work claims, including those made by subcontractors and suppliers. As part of the settlement, the contractor shall indemnify the Districts from any and all unresolved claims associated with the Project. This item is consistent with the Districts' Guiding Principle of commitment to operational excellence (protection of public health and the environment, regulatory compliance, and cost effectiveness).

10. Re: Wastewater Budget Matters for Fiscal Year 2023-24

- (a) Establish by Resolution Appropriations Limit of \$36,069,445 as Required by California Government Code Section 7910
- (b) Adopt Operating Fund Budget
- (c) Resolution Requesting Tax Levy of \$9,092,000
- (d) Authorize Appropriations per Budget

Summary: A letter discussing 2023-24 fiscal year budgetary matters accompanies the agenda. This item is consistent with the Districts' Guiding Principles of commitment to fiscal responsibility and prudent financial stewardship; and to plan for both short-term and long-term needs to minimize the need for significant rate increases.

Adjourn

Status Report: Prior to or during the meeting session, the Chief Engineer and General Manager may update the Directors on various matters concerning the Districts that may be of current interest to the Directors.

Public Comment: Members of the public may address the Board of Directors on any item shown on the agenda or matter under the Board's authority. A "Request to Address Board of Directors" form is available. In compliance with the Americans with Disabilities Act, if you require special assistance to participate in this meeting, please contact the Secretary to the Boards' Office (562) 908-4288, extension 1100. Notification of 48 hours prior to the meeting will enable staff to make reasonable arrangements to ensure accessibility to this meeting. (28CFR 35.101 et seq. ADA Title II).

Document Requests: Links to supporting documents are available online at the time of posting. Agendas and supporting documents or other writings that will be distributed to Board members in connection with matters subject to discussion or consideration at this meeting that are not exempt from disclosure under the Public Records Act are available for inspection following the posting of this agenda at the office of the Secretary to the Boards of Directors located at the Districts' Joint Administration Building, 1955 Workman Mill Road, Whittier, California, 90601, or at the time of the meeting at the address posted on this agenda.

TO: BOARD OF DIRECTORS OF SANTA CLARITA VALLEY
SANITATION DISTRICT OF LOS ANGELES COUNTY

RE: AGENDA ITEM NO. 4

FOR BOARD MEETING June 20, 2023

PROPOSALS were received at the District Office on Tuesday, June 6, 2023 at 11:00 a.m.

FOR ADVANCED WATER TREATMENT FACILITY BRINE HAULING FROM VALENCIA WATER
RECLAMATION PLANT TO JOINT WATER POLLUTION CONTROL PLANT

No. of Proposals Received: 1

| <u>PROPOSER</u> | <u>TOTAL</u> |
|---------------------------------------|----------------------|
| Reliable Environmental Services, LLC. | \$9,520,680 per year |

RECOMMENDATION:

Reject proposals, revise request for proposals, and authorize Chief Engineer and General Manager to establish date for re-advertisement and receipt of proposals.

Only one proposal was received, and the cost was significantly higher than the engineer's estimate. It is anticipated that including additional proposers and rebidding will result in more cost-effective proposals.

Engineer's Estimate: \$2,800,000 per year

Martha Tremblay
for
Robert C. Ferrante
Chief Engineer and
General Manager

SANTA CLARITA VALLEY SANITATION DISTRICT OF LOS ANGELES COUNTY

PROPOSED ANNEXATION NO. 1113

AGENDA DATE: Resolution Making Application to LAFCO June 20, 2023

LOCATION: Located on the west side of Sierra Highway, approximately 600 feet south of Newhall Avenue, all within the City of Santa Clarita, as shown on the attached map.

| | | |
|-------------------------|-----------------------------------|--------------------|
| PROCESSING FEES: | District | \$ 1,950.00 |
| | Local Agency Formation Commission | 2,500.00 |
| | State Board of Equalization | <u>350.00</u> |
| | Total: | \$ <u>4,800.00</u> |

DESCRIPTION & REMARKS: The annexation consists of 83 proposed assisted living apartments.

NOTICE OF FINDING/CERTIFICATE OF FILING

ANNEXATION NO. 1113 TO SANTA CLARITA VALLEY SANITATION DISTRICT

The annexation consists of 83 proposed assisted living apartments.

1. **BASED UPON REVIEW AND STUDY, I FIND AND CERTIFY THAT:**

- The annexation **is exempt** from the provisions of the California Environmental Quality Act, pursuant to the State CEQA Guidelines,

Section:

Reason:

- The **Mitigated Negative Declaration** is adequate for consideration of the annexation.

- The **Environmental Impact Report** is acceptable for consideration of the annexation.

ISSUED BY:

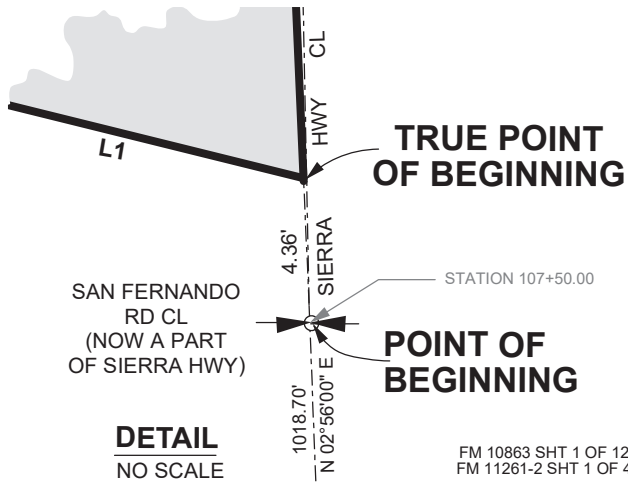
- City of Santa Clarita

2. The subject annexation has been set for consideration before the Board of Directors of Santa Clarita Valley Sanitation District at their meeting to be held on June 20, 2023, at the time and place as provided for the meeting of said date.
3. The subject annexation and all related documents are on file in the office of the Chief Engineer and General Manager, Los Angeles County Sanitation Districts, 1955 Workman Mill Road, (P.O. Box 4998) Whittier, California and may be examined by any interested person for further particulars. Telephone: (562) 908-4288, extension 2708.



Stan Pegadiotes
Division Engineer
Facilities Planning Department

RANCHO SAN FRANCISCO
CITY OF SANTA CLARITA



TRACT No. 2703,
M.B. 28 / 20 - 26
PARCEL 10

INST. NO.
20190938219 O.R.
APN 2827-005-048

PARCEL 11

RELINQUISHMENT
REQUEST NO. 952
(SEGMENT 13)
INST. NO. 81-915911

STATE OF CALIFORNIA
DIVISION OF HIGHWAYS
07-LA-14- R 27.0 APPRAISAL
MAP F-1055-8

3
06-24-1966

POINT OF BEGINNING

NEWHALL AVE
(FORMERLY SAN FERNANDO RD)

NEWHALL AVE
(FORMERLY SAN FERNANDO RD)

SIERRA HWY
L = 1108.12'
R = 2000'

TRUE POINT OF BEGINNING

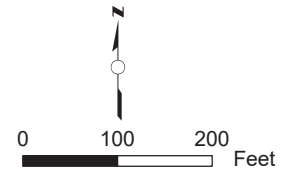
CITY OF SANTA CLARITA

ANNEX NO 1113

VICINITY MAP
NO SCALE

COURSE DATA

| | | |
|----|---------------|---------|
| L1 | N 76°54'30" W | 781.21' |
| L2 | N 68°33'00" E | 512.30' |
| L3 | N 07°09'00" E | 97.80' |
| L4 | N 87°04'00" E | 247.95' |
| L5 | S 02°56'00" E | 474.64' |



**"FOR TAX ASSESSMENT
PURPOSES ONLY"**

P. 1 / 57

| | |
|--|---|
| Annexation No. 1113 shown thus | |
| Boundary of Santa Clarita Valley Sanitation District | |
| Prior to Annexation No. 1113 shown thus | |
| Prior Annexations shown thus | |
| Area of Annexation | ANNEX. NO. (RECORDING DATE) 4.323 Acres |

SANTA CLARITA VALLEY
SANITATION DISTRICT
OF LOS ANGELES COUNTY, CA
OFFICE OF CHIEF ENGINEER
ROBERT C. FERRANTE
CHIEF ENGINEER & GENERAL MANAGER

ANNEXATION NO. 1113
TO
SANTA CLARITA VALLEY
SANITATION DISTRICT

Recorded:

LA County Assessor Landbase,
CAMS Centerline, DPW City boundary
LA County Sanitation Districts:
AnnexationLayer and District Layer

JOINT RESOLUTION OF THE BOARD OF SUPERVISORS OF THE COUNTY OF LOS ANGELES
ACTING IN BEHALF OF

Los Angeles County General Fund

Los Angeles County Consolidated Fire Protection District

Los Angeles County Flood Control

THE BOARD OF DIRECTORS OF SANTA CLARITA VALLEY SANITATION DISTRICT OF LOS
ANGELES COUNTY, AND THE GOVERNING BODIES OF

Greater Los Angeles County Vector Control District

City of Santa Clarita

Santa Clarita Library

Santa Clarita Valley Water Agency

APPROVING AND ACCEPTING NEGOTIATED EXCHANGE OF PROPERTY TAX REVENUES
RESULTING FROM ANNEXATION TO SANTA CLARITA VALLEY SANITATION DISTRICT

"ANNEXATION NO. 1113"

WHEREAS, pursuant to Section 99 and 99.01 of the Revenue and Taxation Code, prior to the effective date of any jurisdictional change which will result in a special district providing a new service, the governing bodies of all local agencies that receive an apportionment of the property tax from the area must determine the amount of property tax revenues from the annual tax increment to be exchanged between the affected agencies and approve and accept the negotiated exchange of property tax revenues by resolution; and

WHEREAS, the governing bodies of the agencies signatory hereto have made determinations of the amount of property tax revenues from the annual tax increments to be exchanged as a result of the annexation to Santa Clarita Valley Sanitation District entitled *Annexation No. 1113*;

NOW, THEREFORE, BE IT RESOLVED AS FOLLOWS:

1. The negotiated exchange of property tax revenues resulting from the annexation of territory to Santa Clarita Valley Sanitation District in the annexation entitled *Annexation No. 1113* is approved and accepted.
2. For each fiscal year commencing on July 1, 2022, or after the effective date of this jurisdictional change, whichever is later, the County Auditor shall transfer to Santa Clarita Valley Sanitation District a total of 0.9683037 percent of the annual tax increment attributable to the land area encompassed within *Annexation No. 1113* as shown on the attached Worksheet.
3. No additional transfer of property tax revenues shall be made from any other tax agencies to Santa Clarita Valley Sanitation District as a result of annexation entitled *Annexation No. 1113*.

4. No transfer of property tax increments from properties within a community redevelopment project, which are legally committed to a Community Redevelopment Agency, shall be made during the period that such tax increment is legally committed for repayment of the redevelopment project costs.

5. If at any time after the effective date of this resolution, the calculations used herein to determine initial property tax transfers or the data used to perform those calculations are found to be incorrect thus producing an improper or inaccurate property tax transfer, the property tax transfer shall be recalculated and the corrected transfer shall be implemented for the next fiscal year.

The foregoing resolution was adopted by the Board of Supervisors of the County of Los Angeles, the Board of Directors of Santa Clarita Valley Sanitation District of Los Angeles County, and the governing bodies of Greater Los Angeles County Vector Control District, City of Santa Clarita, Santa Clarita Library, and Santa Clarita Valley Water Agency, signatory hereto.

SANTA CLARITA VALLEY SANITATION
DISTRICT OF LOS ANGELES COUNTY

Chairperson, Board of Directors

ATTEST:

Secretary

Date

(SIGNED IN COUNTERPART)

ANNEXATION TO: STA CLRTA VLY SANIT DIS OF LA CO
 ACCOUNT NUMBER: 067.35
 TRA: 15548
 EFFECTIVE DATE: 07/01/2022
 ANNEXATION NUMBER: 1113 PROJECT NAME: A-SCV-1113
 DISTRICT SHARE: 0.017508354

| ACCOUNT # | TAXING AGENCY | CURRENT TAX SHARE | PERCENT | PROPOSED DIST SHARE | ALLOCATED SHARE | ADJUSTMENTS | NET SHARE |
|-----------|----------------------------------|-------------------|-----------|---------------------|-----------------|--------------|-------------|
| 001.05 | LOS ANGELES COUNTY GENERAL | 0.231845596 | 23.1856 % | 0.017508354 | 0.004059246 | -0.004152800 | 0.227692796 |
| 001.20 | L.A. COUNTY ACCUM CAP OUTLAY | 0.000000000 | 0.0000 % | 0.017508354 | 0.000000000 | 0.000000000 | 0.000000000 |
| 007.30 | CONSOL. FIRE PRO.DIST.OF L.A.CO. | 0.169934902 | 16.9934 % | 0.017508354 | 0.002975280 | -0.002975280 | 0.166959622 |
| 007.31 | L A C FIRE-FFW | 0.005343434 | 0.5343 % | 0.017508354 | 0.000093554 | 0.000000000 | 0.005343434 |
| 030.10 | L.A.CO.FL.CON.DR.IMP.DIST.MAINT. | 0.001603027 | 0.1603 % | 0.017508354 | 0.000028066 | -0.000028066 | 0.001574961 |
| 030.70 | LA CO FLOOD CONTROL MAINT | 0.009071849 | 0.9071 % | 0.017508354 | 0.000158833 | -0.000158833 | 0.008913016 |
| 061.80 | GREATER L A CO VECTOR CONTROL | 0.000321825 | 0.0321 % | 0.017508354 | 0.000005634 | -0.000005634 | 0.000316191 |
| 249.01 | CITY-SANTA CLARITA NEWHALL RP | 0.057230423 | 5.7230 % | 0.017508354 | 0.001002010 | -0.001002010 | 0.056228413 |
| 249.56 | CITY-SANTA CLARITA LIBRARY | 0.021928241 | 2.1928 % | 0.017508354 | 0.000383927 | -0.000383927 | 0.021544314 |
| 302.01 | SANTA CLARITA VALLEY WATER-CLWA | 0.054428325 | 5.4428 % | 0.017508354 | 0.000952950 | -0.000952950 | 0.053475375 |
| 309.01 | SANTA CLARITA VALLEY WATER-NCW | 0.001344366 | 0.1344 % | 0.017508354 | 0.000023537 | -0.000023537 | 0.001320829 |
| 400.00 | EDUCATIONAL REV AUGMENTATION FD | 0.068995377 | 6.8995 % | 0.017508354 | 0.001207995 | EXEMPT | 0.068995377 |
| 400.01 | EDUCATIONAL AUG FD IMPOUND | 0.133767785 | 13.3767 % | 0.017508354 | 0.002342053 | EXEMPT | 0.133767785 |
| 400.15 | COUNTY SCHOOL SERVICES | 0.001347183 | 0.1347 % | 0.017508354 | 0.000023586 | EXEMPT | 0.001347183 |
| 400.21 | CHILDREN'S INSTIL TUITION FUND | 0.002673517 | 0.2673 % | 0.017508354 | 0.000046808 | EXEMPT | 0.002673517 |
| 581.01 | NEWHALL SCHOOL DISTRICT | 0.078769514 | 7.8769 % | 0.017508354 | 0.001379124 | EXEMPT | 0.078769514 |
| 581.06 | CO.SCH.SERV.FD.- NEWHALL | 0.007552902 | 0.7552 % | 0.017508354 | 0.000132238 | EXEMPT | 0.007552902 |
| 581.07 | DEV.CTR. HDCPD.MINOR-NEWHALL | 0.000831565 | 0.0831 % | 0.017508354 | 0.000014559 | EXEMPT | 0.000831565 |
| 757.02 | HART WILLIAM S UNION HIGH | 0.076905019 | 7.6905 % | 0.017508354 | 0.001346480 | EXEMPT | 0.076905019 |

ANNEXATION NUMBER: 1113

PROJECT NAME: A-SCV-1113

TRA: 15548

| ACCOUNT # | TAXING AGENCY | CURRENT TAX SHARE | PERCENT | PROPOSED DIST SHARE | ALLOCATED SHARE | ADJUSTMENTS | NET SHARE |
|-----------|----------------------------------|-------------------|------------|---------------------|-----------------|--------------|-------------|
| 757.06 | CO.SCH.SERV.FD.- HART,WILLIAM S. | 0.000320524 | 0.0320 % | 0.017508354 | 0.000005611 | EXEMPT | 0.000320524 |
| 757.07 | HART,WILLIAM S.-ELEM SCHOOL FUND | 0.040464978 | 4.0464 % | 0.017508354 | 0.000708475 | EXEMPT | 0.040464978 |
| 814.04 | SANTA CLARITA COMMUNITY COLLEGE | 0.035319648 | 3.5319 % | 0.017508354 | 0.000618388 | EXEMPT | 0.035319648 |
| ***067.35 | STA CLRTA VLY SANIT DIS OF LA CO | 0.000000000 | 0.0000 % | 0.017508354 | 0.000000000 | 0.000000000 | 0.009683037 |
| TOTAL: | | 1.000000000 | 100.0000 % | | 0.017508354 | -0.009683037 | 1.000000000 |

SANTA CLARITA VALLEY SANITATION DISTRICT OF LOS ANGELES COUNTY

PROPOSED ANNEXATION NO. 1121

AGENDA DATE: Resolution Making Application to LAFCO June 20, 2023

LOCATION: Located on the north and south sides of Placerita Canyon Road west of Golden Oak Lane, all within the City of Santa Clarita, as shown on the attached map.

| | | |
|-------------------------|-----------------------------------|---------------------|
| PROCESSING FEES: | District | \$ 9,300.00 |
| | Local Agency Formation Commission | 5,000.00 |
| | State Board of Equalization | <u>1,900.00</u> |
| | Total: | \$ <u>16,200.00</u> |

DESCRIPTION & REMARKS: The annexation consists of 27 existing single-family homes.

NOTICE OF FINDING/CERTIFICATE OF FILING

ANNEXATION NO. 1121 TO SANTA CLARITA VALLEY SANITATION DISTRICT

The annexation consists of 27 existing single-family homes.

1. **BASED UPON REVIEW AND STUDY, I FIND AND CERTIFY THAT:**

- The annexation **is exempt** from the provisions of the California Environmental Quality Act, pursuant to the State CEQA Guidelines,

Section: 15319(a)

Reason: The annexation consists of areas containing existing structures developed to the density allowed by the current zoning

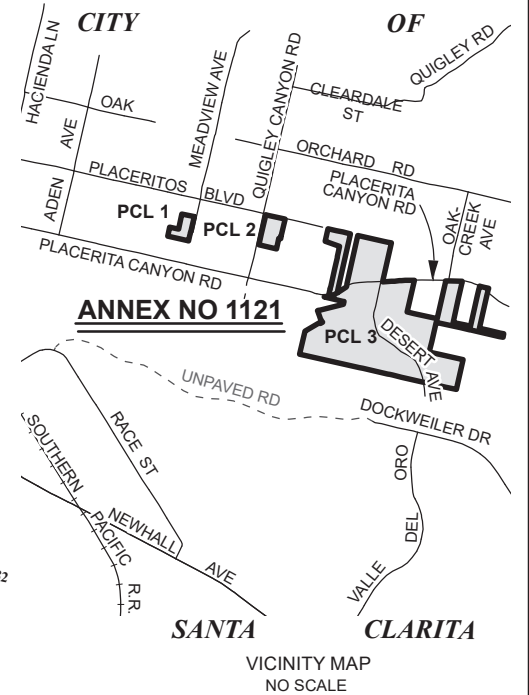
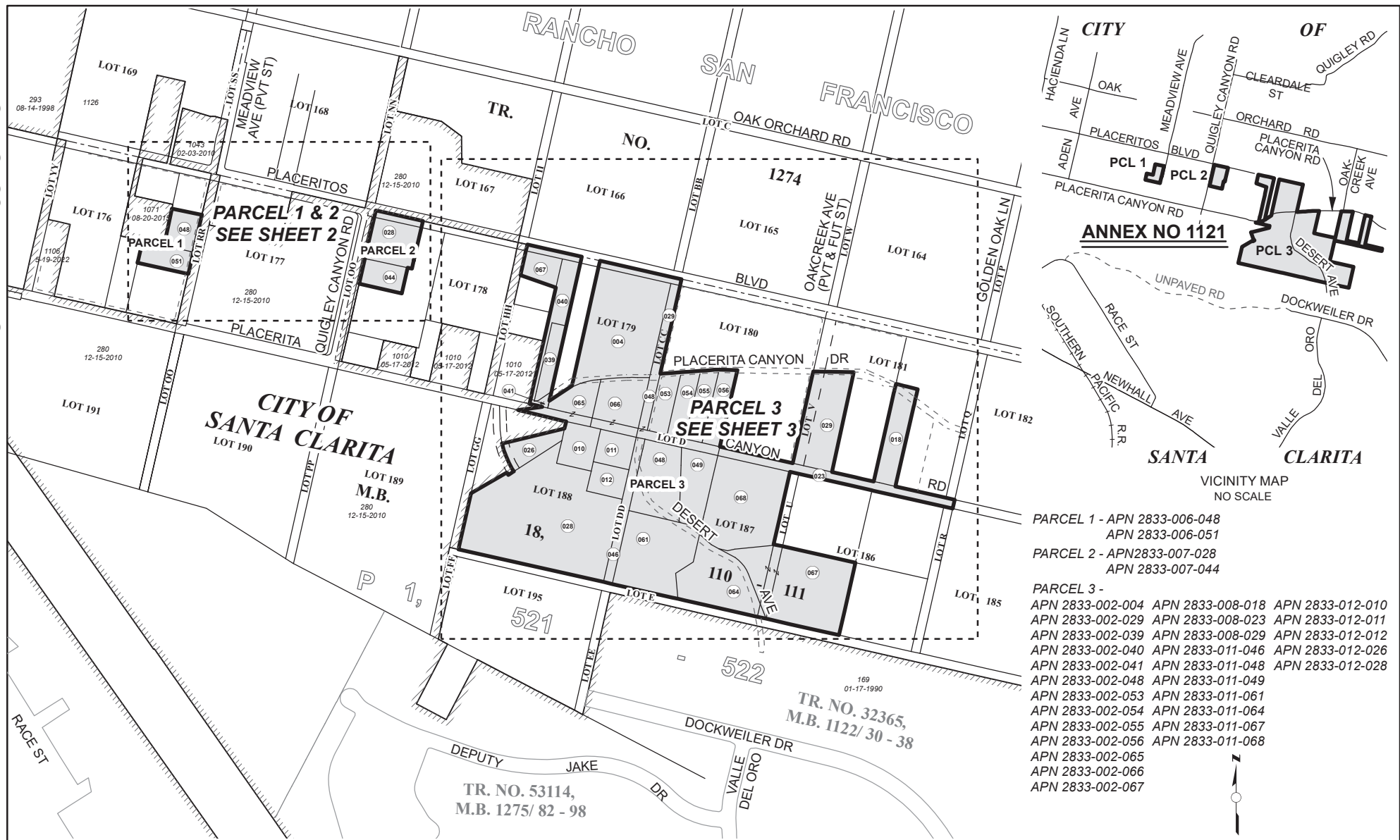
- The **Negative Declaration** is adequate for consideration of the annexation.

- The **Environmental Impact Report** is acceptable for consideration of the annexation.

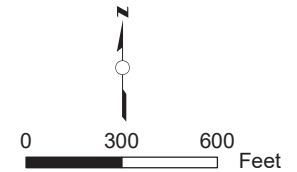
2. The subject annexation has been set for consideration before the Board of Directors of Santa Clarita Valley Sanitation District at their meeting to be held on June 20, 2023, at the time and place as provided for the meeting of said date.
3. The subject annexation and all related documents are on file in the office of the Chief Engineer and General Manager, Los Angeles County Sanitation Districts, 1955 Workman Mill Road, (P.O. Box 4998) Whittier, California and may be examined by any interested person for further particulars. Telephone: (562) 908-4288, extension 2708.



Stan Pegadiotes
Division Engineer
Facilities Planning Department



- PARCEL 1 - APN 2833-006-048
 APN 2833-006-051
- PARCEL 2 - APN 2833-007-028
 APN 2833-007-044
- PARCEL 3 -
 APN 2833-002-004 APN 2833-008-018 APN 2833-012-010
 APN 2833-002-029 APN 2833-008-023 APN 2833-012-011
 APN 2833-002-039 APN 2833-008-029 APN 2833-012-012
 APN 2833-002-040 APN 2833-011-046 APN 2833-012-026
 APN 2833-002-041 APN 2833-011-048 APN 2833-012-028
 APN 2833-002-048 APN 2833-011-049
 APN 2833-002-053 APN 2833-011-061
 APN 2833-002-054 APN 2833-011-064
 APN 2833-002-055 APN 2833-011-067
 APN 2833-002-056 APN 2833-011-068
 APN 2833-002-065
 APN 2833-002-066
 APN 2833-002-067



"FOR TAX ASSESSMENT PURPOSES ONLY"

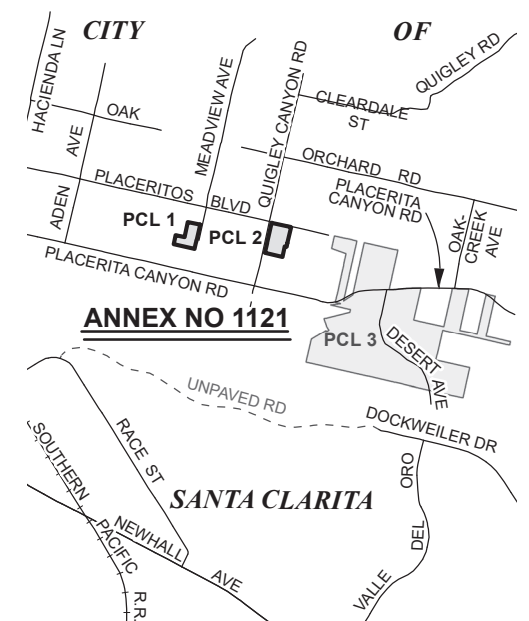
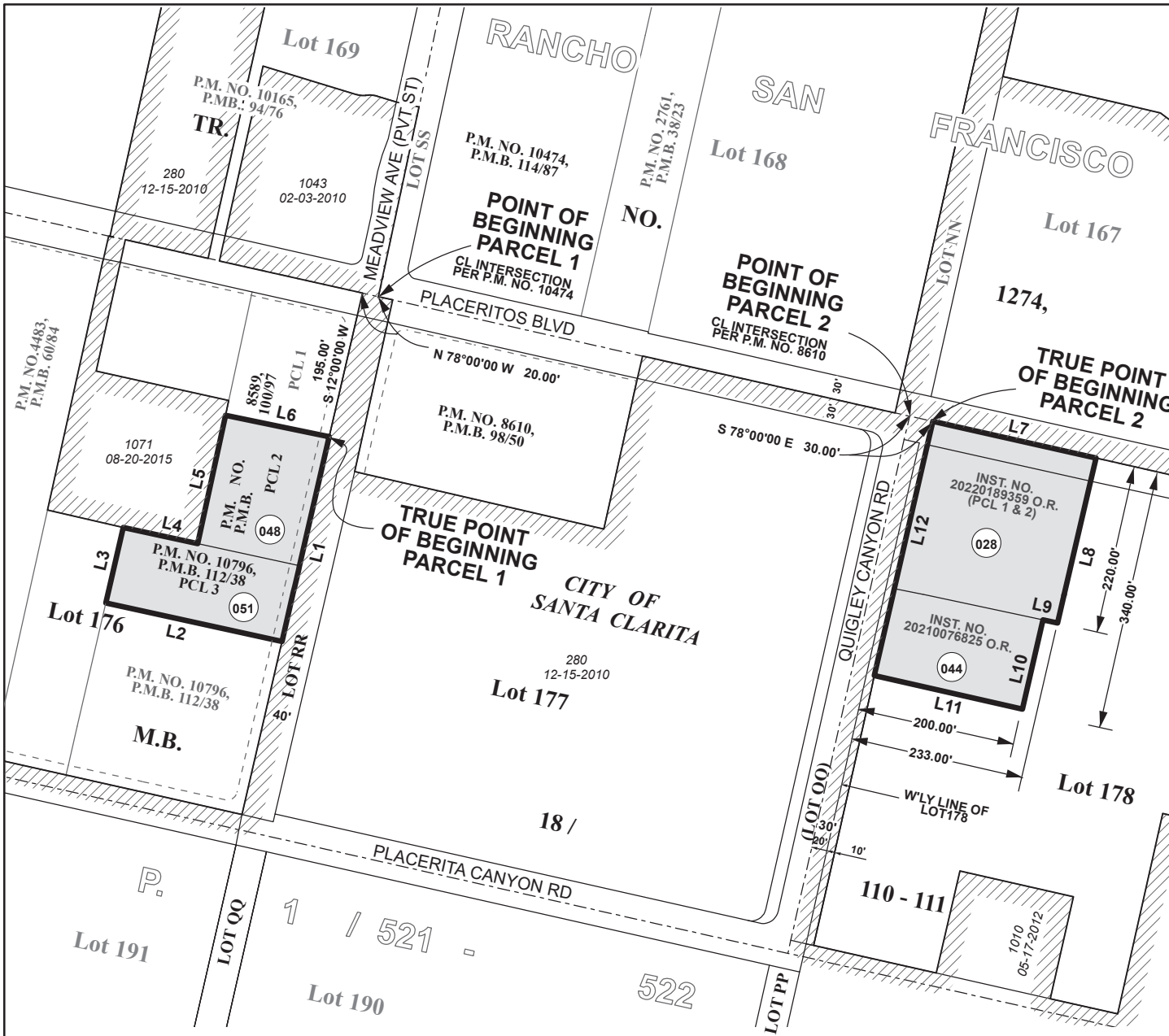
| | |
|--|--------------|
| Annexation No. 1121 shown thus | |
| Boundary of Santa Clarita Valley Sanitation District | |
| Prior to Annexation No. 1121 shown thus | |
| Prior Annexations shown thus | |
| PARCEL 1 | 1.066 Acres |
| PARCEL 2 | 1.599 Acres |
| PARCEL 3 | 36.754 Acres |
| TOTAL | 39.419 Acres |

LA County Assessor Landbase,
 CAMS Centerline, DPW City boundary
 LA County Sanitation Districts:
 AnnexationLayer and District Layer

SANTA CLARITA VALLEY
 SANITATION DISTRICT
 OF LOS ANGELES COUNTY, CA
 OFFICE OF CHIEF ENGINEER
 ROBERT C. FERRANTE
 CHIEF ENGINEER & GENERAL MANAGER

ANNEXATION NO. 1121
 TO
 SANTA CLARITA VALLEY
 SANITATION DISTRICT

Recorded:



VICINITY MAP
NO SCALE

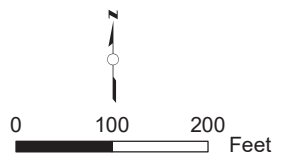
COURSE DATA

PARCEL 1

| | | |
|----|---------------|---------|
| L1 | S 12°00'00" W | 270.00' |
| L2 | N 78°00'00" W | 230.00' |
| L3 | N 12°00'00" E | 105.00' |
| L4 | S 78°00'00" E | 95.00' |
| L5 | N 12°00'00" E | 165.00' |
| L6 | S 78°00'00" E | 135.00' |

PARCEL 2

| | | |
|-----|---------------|---------|
| L7 | S 78°00'00" E | 213.00' |
| L8 | S 12°00'00" W | 220.00' |
| L9 | N 78°00'00" W | 23.00' |
| L10 | S 12°00'00" W | 120.00' |
| L11 | N 78°00'00" W | 190.00' |
| L12 | N 12°00'00" E | 340.00' |



"FOR TAX ASSESSMENT PURPOSES ONLY"

PARCEL 1 - APN 2833-006-048, 051
PARCEL 2 - APN 2833-007-028, 044

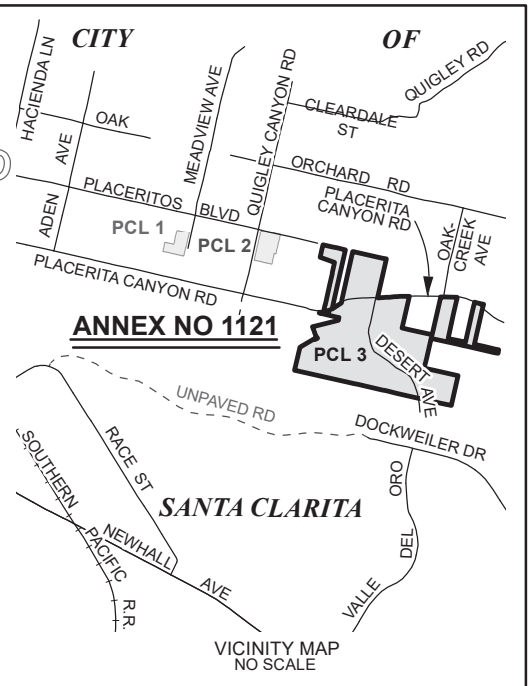
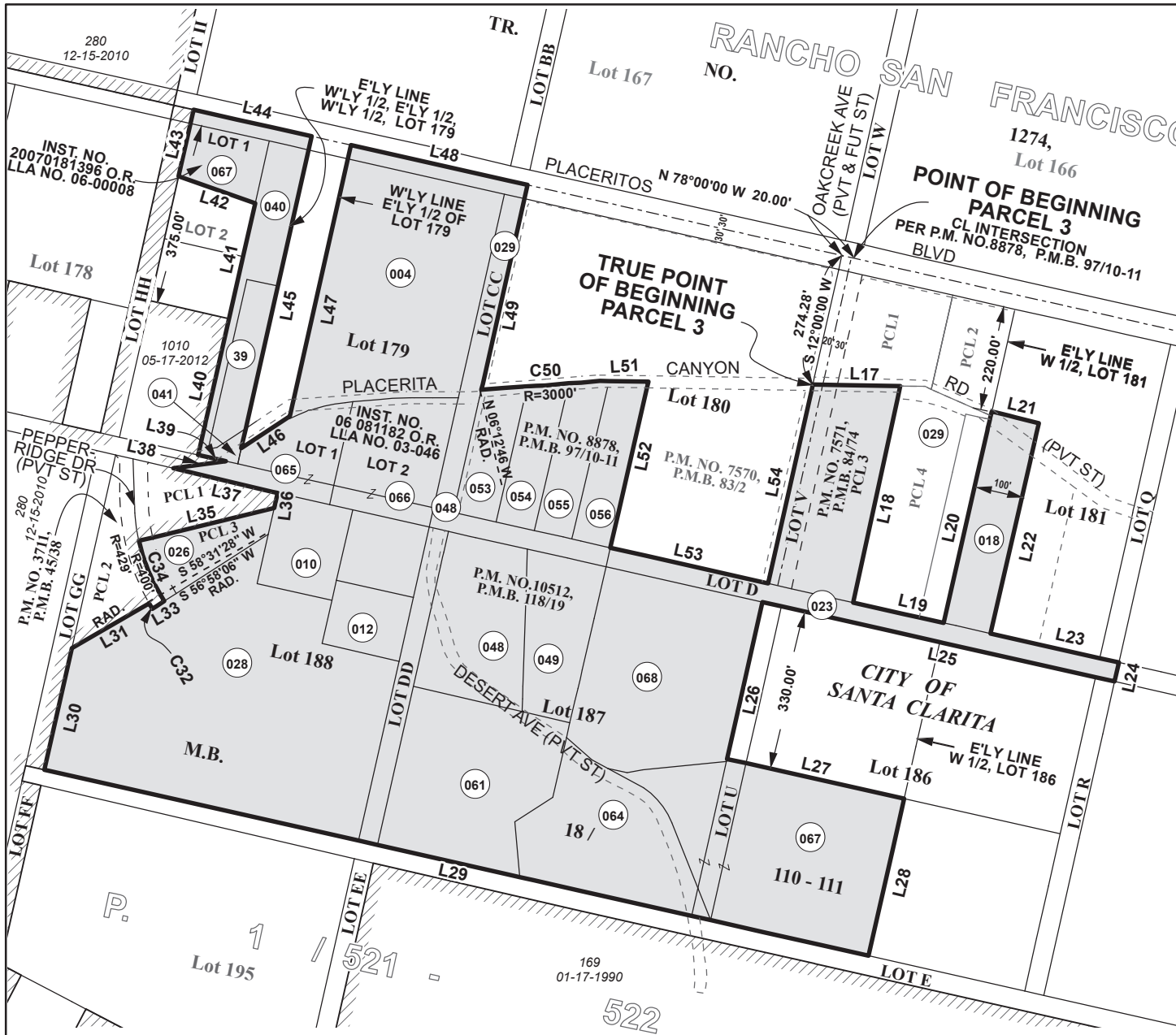
LA County Assessor Landbase,
CAMS Centerline, DPW City boundary
LA County Sanitation Districts:
AnnexationLayer and District Layer

| | | |
|--|-------|------------------------------|
| Annexation No. 1121 shown thus | | |
| Boundary of Santa Clarita Valley Sanitation District | | |
| Prior to Annexation No. 1121 shown thus | | |
| Prior Annexations shown thus | | |
| PARCEL 1 | | ANNEX. NO. 1.066 Acres |
| PARCEL 2 | | (RECORDING DATE) 1.599 Acres |

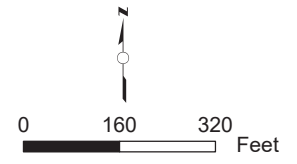
SANTA CLARITA VALLEY
SANITATION DISTRICT
OF LOS ANGELES COUNTY, CA
OFFICE OF CHIEF ENGINEER
ROBERT C. FERRANTE
CHIEF ENGINEER & GENERAL MANAGER

ANNEXATION NO. 1121
TO
SANTA CLARITA VALLEY
SANITATION DISTRICT

Recorded:






- PARCEL 3 -
- APN 2833-002-004
 - APN 2833-002-029
 - APN 2833-002-039
 - APN 2833-002-040
 - APN 2833-002-041
 - APN 2833-002-048
 - APN 2833-002-053
 - APN 2833-002-054
 - APN 2833-002-055
 - APN 2833-002-056
 - APN 2833-002-065
 - APN 2833-002-066
 - APN 2833-002-067
 - APN 2833-008-018
 - APN 2833-008-023
 - APN 2833-008-029
 - APN 2833-011-046
 - APN 2833-011-048
 - APN 2833-011-049
 - APN 2833-011-061
 - APN 2833-011-064
 - APN 2833-011-067
 - APN 2833-011-068
 - APN 2833-012-010
 - APN 2833-012-011
 - APN 2833-012-012
 - APN 2833-012-026
 - APN 2833-012-028



"FOR TAX ASSESSMENT PURPOSES ONLY"

COURSE DATA
SHEET 4 OF 4

LA County Assessor Landbase,
CAMS Centerline, DPW City boundary
LA County Sanitation Districts:
Annexation Layer and District Layer

Annexation No. 1121 shown thus 
 Boundary of Santa Clarita Valley Sanitation District
 Prior to Annexation No. 1121 shown thus 
 Prior Annexations shown thus 
 PARCEL 3 36.754 Acres

ANNEX. NO.
(RECORDING DATE)

SANTA CLARITA VALLEY
SANITATION DISTRICT
OF LOS ANGELES COUNTY, CA
OFFICE OF CHIEF ENGINEER
ROBERT C. FERRANTE
CHIEF ENGINEER & GENERAL MANAGER
ANNEXATION NO. 1121
TO
SANTA CLARITA VALLEY
SANITATION DISTRICT
Recorded:

COURSE DATA

| | |
|--|---|
| L17 S 89°56'45" E 183.98' | L36 N 12°00'00" E 35.70' |
| L18 S 12°00'00" W 453.80' | L37 N 78°00'00" W 210.43' |
| L19 S 78°00'00" E 190.00' | L38 N 78°57'11" E 102.18' |
| L20 N 12°00'00" E 440.00' | L39 N 78°00'00" W 58.85' |
| L21 S 78°00'00" E 100.00' | L40 N 12°00'00" E 285.00' |
| L22 S 12°00'00" W 440.00' | L41 N 12°00'00" E 243.78' |
| L23 S 78°00'00" E 270.00' | L42 N 71°05'07" W 166.21' |
| L24 S 12°00'00" W 40.00' | L43 N 12°00'00" E 141.21' |
| L25 N 78°00'00" W 740.00' | L44 S 78°00'00" E 247.50' |
| L26 S 12°00'00" W 330.00' | L45 S 12°00'00" W 654.99' |
| L27 S 78°00'00" E 370.00' | L46 N 56°08'42" E 118.45' |
| L28 S 12°00'00" W 330.00' | L47 N 12°00'00" E 569.99' |
| L29 N 78°00'00" W 1730.00' | L48 S 78°00'00" E 370.00' |
| L30 N 12°00'00" E 252.85' | L49 S 12°00'00" W 432.24' |
| L31 N 58°31'28" E 185.94' | C50 R = 3000.00' L=328.14' D= 06°16'01" |
| C32 R = 429.00' L=11.57' D= 01°32'43" | L51 S 89°56'45" E 13.61' |
| L33 N 56°58'06" E 29.00' | L52 S 12°00'00" W 345.90' |
| C34 R = 400.00' L=132.87' D= 19°01'55" | L53 S 78°00'00" E 330.00' |
| L35 N 76°00'40" E 282.07' | L54 N 12°00'00" E 415.72' |

PARCEL 3 -


- APN 2833-002-004 APN 2833-008-018 APN 2833-012-010
- APN 2833-002-029 APN 2833-008-023 APN 2833-012-011
- APN 2833-002-039 APN 2833-008-029 APN 2833-012-012
- APN 2833-002-040 APN 2833-011-046 APN 2833-012-026
- APN 2833-002-041 APN 2833-011-048 APN 2833-012-028
- APN 2833-002-048 APN 2833-011-049
- APN 2833-002-053 APN 2833-011-061
- APN 2833-002-054 APN 2833-011-064
- APN 2833-002-055 APN 2833-011-067
- APN 2833-002-056 APN 2833-011-068
- APN 2833-002-065
- APN 2833-002-066
- APN 2833-002-067


**"FOR TAX ASSESSMENT
PURPOSES ONLY"**

COURSE DATA

SHEET4 OF 4

LA County Assessor Landbase,
CAMS Centerline, DPW City boundary
LA County Sanitation Districts:
AnnexationLayer and District Layer

Annexation No. 1121 shown thus 

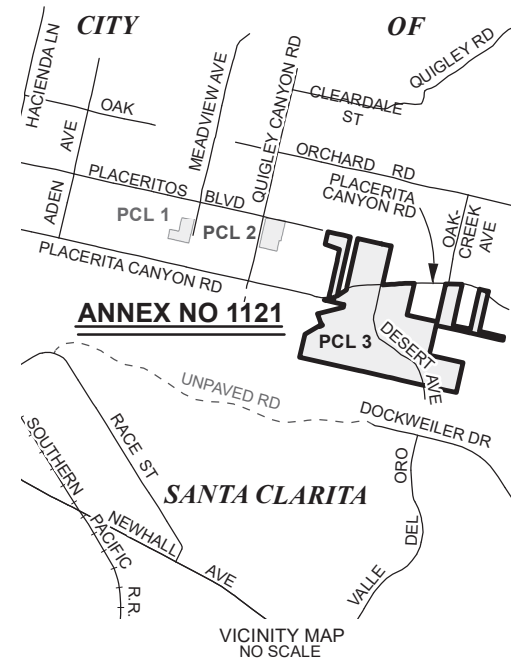
Boundary of Santa Clarita Valley Sanitation District 

Prior to Annexation No. 1121 shown thus

Prior Annexations shown thus

PARCEL 3 36.754 Acres

ANNEX. NO.
(RECORDING DATE)



SANTA CLARITA VALLEY
SANITATION DISTRICT
OF LOS ANGELES COUNTY, CA
OFFICE OF CHIEF ENGINEER
ROBERT C. FERRANTE
CHIEF ENGINEER & GENERAL MANAGER
ANNEXATION NO. 1121
TO
SANTA CLARITA VALLEY
SANITATION DISTRICT

Recorded:

JOINT RESOLUTION OF THE BOARD OF SUPERVISORS OF THE COUNTY OF LOS ANGELES
ACTING IN BEHALF OF

- Los Angeles County General Fund
- Los Angeles County Consolidated Fire Protection District
- Los Angeles County Flood Control

THE BOARD OF DIRECTORS OF SANTA CLARITA VALLEY SANITATION DISTRICT OF LOS ANGELES COUNTY, AND THE GOVERNING BODIES OF

- Greater Los Angeles County Vector Control District
- City of Santa Clarita
- Santa Clarita Street Lighting Maintenance District No. 2
- Santa Clarita Library
- Santa Clarita Valley Water Agency

APPROVING AND ACCEPTING NEGOTIATED EXCHANGE OF PROPERTY TAX REVENUES
RESULTING FROM ANNEXATION TO SANTA CLARITA VALLEY SANITATION DISTRICT

"ANNEXATION NO. 1121"

WHEREAS, pursuant to Section 99 and 99.01 of the Revenue and Taxation Code, prior to the effective date of any jurisdictional change which will result in a special district providing a new service, the governing bodies of all local agencies that receive an apportionment of the property tax from the area must determine the amount of property tax revenues from the annual tax increment to be exchanged between the affected agencies and approve and accept the negotiated exchange of property tax revenues by resolution; and

WHEREAS, the governing bodies of the agencies signatory hereto have made determinations of the amount of property tax revenues from the annual tax increments to be exchanged as a result of the annexation to Santa Clarita Valley Sanitation District entitled *Annexation No. 1121*;

NOW, THEREFORE, BE IT RESOLVED AS FOLLOWS:

1. The negotiated exchange of property tax revenues resulting from the annexation of territory to Santa Clarita Valley Sanitation District in the annexation entitled *Annexation No. 1121* is approved and accepted.
2. For each fiscal year commencing on July 1, 2022, or after the effective date of this jurisdictional change, whichever is later, the County Auditor shall transfer to Santa Clarita Valley Sanitation District a total of 0.9667426 percent of the annual tax increment attributable to the land area encompassed within *Annexation No. 1121* for Tax Rate Area 00218 as shown on the attached Worksheet.
3. For each fiscal year commencing on July 1, 2022, or after the effective date of this jurisdictional change, whichever is later, the County Auditor shall transfer to Santa Clarita Valley Sanitation District a total of 0.9678106 percent of the annual tax increment attributable to the land area encompassed within *Annexation No. 1121* for Tax Rate Area 00344 as shown on the attached Worksheet.

4. For each fiscal year commencing on July 1, 2022, or after the effective date of this jurisdictional change, whichever is later, the County Auditor shall transfer to Santa Clarita Valley Sanitation District a total of 0.9657761 percent of the annual tax increment attributable to the land area encompassed within *Annexation No. 1121* for Tax Rate Area 00363 as shown on the attached Worksheet.

5. For each fiscal year commencing on July 1, 2022, or after the effective date of this jurisdictional change, whichever is later, the County Auditor shall transfer to Santa Clarita Valley Sanitation District a total of 0.9678106 percent of the annual tax increment attributable to the land area encompassed within *Annexation No. 1121* for Tax Rate Area 15410 as shown on the attached Worksheet.

6. For each fiscal year commencing on July 1, 2022, or after the effective date of this jurisdictional change, whichever is later, the County Auditor shall transfer to Santa Clarita Valley Sanitation District a total of 0.9667462 percent of the annual tax increment attributable to the land area encompassed within *Annexation No. 1121* for Tax Rate Area 16353 as shown on the attached Worksheet.

7. No additional transfer of property tax revenues shall be made from any other tax agencies to Santa Clarita Valley Sanitation District as a result of annexation entitled *Annexation No. 1121*.

8. No transfer of property tax increments from properties within a community redevelopment project, which are legally committed to a Community Redevelopment Agency, shall be made during the period that such tax increment is legally committed for repayment of the redevelopment project costs.

9. If at any time after the effective date of this resolution, the calculations used herein to determine initial property tax transfers or the data used to perform those calculations are found to be incorrect thus producing an improper or inaccurate property tax transfer, the property tax transfer shall be recalculated and the corrected transfer shall be implemented for the next fiscal year.

The foregoing resolution was adopted by the Board of Supervisors of the County of Los Angeles, the Board of Directors of Santa Clarita Valley Sanitation District of Los Angeles County, and the governing bodies of Greater Los Angeles County Vector Control District, City of Santa Clarita, Santa Clarita Street Lighting Maintenance District No. 2, Santa Clarita Library, and Santa Clarita Valley Water Agency, signatory hereto.

SANTA CLARITA VALLEY SANITATION
DISTRICT OF LOS ANGELES COUNTY

Chairperson, Board of Directors

ATTEST:

Secretary

Date

(SIGNED IN COUNTERPART)

ANNEXATION TO: STA CLRTA VLY SANIT DIS OF LA CO
 ACCOUNT NUMBER: 067.35
 TRA: 00218
 EFFECTIVE DATE: 07/01/2023
 ANNEXATION NUMBER: 1121 PROJECT NAME: A-SCV-1121
 DISTRICT SHARE: 0.017375930

| ACCOUNT # | TAXING AGENCY | CURRENT TAX SHARE | PERCENT | PROPOSED DIST SHARE | ALLOCATED SHARE | ADJUSTMENTS | NET SHARE |
|-----------|----------------------------------|-------------------|-----------|---------------------|-----------------|--------------|-------------|
| 001.05 | LOS ANGELES COUNTY GENERAL | 0.217629174 | 21.7640 % | 0.017375930 | 0.003781521 | -0.003868533 | 0.213760641 |
| 001.20 | L.A. COUNTY ACCUM CAP OUTLAY | 0.000007622 | 0.0007 % | 0.017375930 | 0.000000132 | 0.000000000 | 0.000007622 |
| 007.30 | CONSOL. FIRE PRO.DIST.OF L.A.CO. | 0.169741106 | 16.9741 % | 0.017375930 | 0.002949409 | -0.002949409 | 0.166791697 |
| 007.31 | L A C FIRE-FFW | 0.005000073 | 0.5000 % | 0.017375930 | 0.000086880 | 0.000000000 | 0.005000073 |
| 030.10 | L.A.CO.FL.CON.DR.IMP.DIST.MAINT. | 0.001546002 | 0.1546 % | 0.017375930 | 0.000026863 | -0.000026863 | 0.001519139 |
| 030.70 | LA CO FLOOD CONTROL MAINT | 0.008748966 | 0.8748 % | 0.017375930 | 0.000152021 | -0.000152021 | 0.008596945 |
| 061.80 | GREATER L A CO VECTOR CONTROL | 0.000322714 | 0.0322 % | 0.017375930 | 0.000005607 | -0.000005607 | 0.000317107 |
| 249.01 | CITY-SANTA CLARITA TD #1 | 0.057345280 | 5.7345 % | 0.017375930 | 0.000996427 | -0.000996427 | 0.056348853 |
| 249.32 | STA CLRTA STREET LIGHT MAINT #2 | 0.020625135 | 2.0625 % | 0.017375930 | 0.000358380 | -0.000358380 | 0.020266755 |
| 249.56 | CITY-SANTA CLARITA LIBRARY | 0.021308407 | 2.1308 % | 0.017375930 | 0.000370253 | -0.000370253 | 0.020938154 |
| 302.01 | SANTA CLARITA VALLEY WATER-CLWA | 0.053176438 | 5.3176 % | 0.017375930 | 0.000923990 | -0.000923990 | 0.052252448 |
| 309.01 | SANTA CLARITA VALLEY WATER-NCW | 0.000919628 | 0.0919 % | 0.017375930 | 0.000015979 | -0.000015979 | 0.000903649 |
| 400.00 | EDUCATIONAL REV AUGMENTATION FD | 0.071561535 | 7.1561 % | 0.017375930 | 0.001243448 | EXEMPT | 0.071561535 |
| 400.01 | EDUCATIONAL AUG FD IMPOUND | 0.133767785 | 13.3767 % | 0.017375930 | 0.002324339 | EXEMPT | 0.133767785 |
| 400.15 | COUNTY SCHOOL SERVICES | 0.001314648 | 0.1314 % | 0.017375930 | 0.000022843 | EXEMPT | 0.001314648 |
| 400.21 | CHILDREN'S INSTIL TUITION FUND | 0.002609147 | 0.2609 % | 0.017375930 | 0.000045336 | EXEMPT | 0.002609147 |
| 581.01 | NEWHALL SCHOOL DISTRICT | 0.076871219 | 7.6871 % | 0.017375930 | 0.001335708 | EXEMPT | 0.076871219 |
| 581.06 | CO.SCH.SERV.FD.- NEWHALL | 0.007370853 | 0.7370 % | 0.017375930 | 0.000128075 | EXEMPT | 0.007370853 |
| 581.07 | DEV.CTR. HDCPD.MINOR-NEWHALL | 0.000811459 | 0.0811 % | 0.017375930 | 0.000014099 | EXEMPT | 0.000811459 |

ANNEXATION NUMBER: 1121

PROJECT NAME: A-SCV-1121

TRA: 00218

| ACCOUNT # | TAXING AGENCY | CURRENT TAX SHARE | PERCENT | PROPOSED DIST SHARE | ALLOCATED SHARE | ADJUSTMENTS | NET SHARE |
|-----------|----------------------------------|-------------------|------------|---------------------|-----------------|--------------|-------------|
| 757.02 | HART WILLIAM S UNION HIGH | 0.075051655 | 7.5051 % | 0.017375930 | 0.001304092 | EXEMPT | 0.075051655 |
| 757.06 | CO.SCH.SERV.FD.- HART,WILLIAM S. | 0.000312840 | 0.0312 % | 0.017375930 | 0.000005435 | EXEMPT | 0.000312840 |
| 757.07 | HART,WILLIAM S.-ELEM SCHOOL FUND | 0.039489839 | 3.9489 % | 0.017375930 | 0.000686172 | EXEMPT | 0.039489839 |
| 814.04 | SANTA CLARITA COMMUNITY COLLEGE | 0.034468475 | 3.4468 % | 0.017375930 | 0.000598921 | EXEMPT | 0.034468475 |
| ***067.35 | STA CLRTA VLY SANIT DIS OF LA CO | 0.000000000 | 0.0000 % | 0.017375930 | 0.000000000 | 0.000000000 | 0.009667462 |
| TOTAL: | | 1.000000000 | 100.0000 % | | 0.017375930 | -0.009667462 | 1.000000000 |

ANNEXATION TO: STA CLRTA VLY SANIT DIS OF LA CO
 ACCOUNT NUMBER: 067.35
 TRA: 00344
 EFFECTIVE DATE: 07/01/2023
 ANNEXATION NUMBER: 1121 PROJECT NAME: A-SCV-1121
 DISTRICT SHARE: 0.017375930

| ACCOUNT # | TAXING AGENCY | CURRENT TAX SHARE | PERCENT | PROPOSED DIST SHARE | ALLOCATED SHARE | ADJUSTMENTS | NET SHARE |
|-----------|----------------------------------|-------------------|-----------|---------------------|-----------------|--------------|-------------|
| 001.05 | LOS ANGELES COUNTY GENERAL | 0.218382520 | 21.8393 % | 0.017375930 | 0.003794609 | -0.003881790 | 0.214500730 |
| 001.20 | L.A. COUNTY ACCUM CAP OUTLAY | 0.000000000 | 0.0000 % | 0.017375930 | 0.000000000 | 0.000000000 | 0.000000000 |
| 007.30 | CONSOL. FIRE PRO.DIST.OF L.A.CO. | 0.170237703 | 17.0237 % | 0.017375930 | 0.002958038 | -0.002958038 | 0.167279665 |
| 007.31 | L A C FIRE-FFW | 0.005017358 | 0.5017 % | 0.017375930 | 0.000087181 | 0.000000000 | 0.005017358 |
| 030.10 | L.A.CO.FL.CON.DR.IMP.DIST.MAINT. | 0.001550946 | 0.1550 % | 0.017375930 | 0.000026949 | -0.000026949 | 0.001523997 |
| 030.70 | LA CO FLOOD CONTROL MAINT | 0.008777111 | 0.8777 % | 0.017375930 | 0.000152510 | -0.000152510 | 0.008624601 |
| 061.80 | GREATER L A CO VECTOR CONTROL | 0.000322714 | 0.0322 % | 0.017375930 | 0.000005607 | -0.000005607 | 0.000317107 |
| 249.01 | CITY-SANTA CLARITA TD #1 | 0.057345280 | 5.7345 % | 0.017375930 | 0.000996427 | -0.000996427 | 0.056348853 |
| 249.32 | STA CLRTA STREET LIGHT MAINT #2 | 0.020669334 | 2.0669 % | 0.017375930 | 0.000359148 | -0.000359148 | 0.020310186 |
| 249.56 | CITY-SANTA CLARITA LIBRARY | 0.021362543 | 2.1362 % | 0.017375930 | 0.000371194 | -0.000371194 | 0.020991349 |
| 302.01 | SANTA CLARITA VALLEY WATER-CLWA | 0.053317649 | 5.3317 % | 0.017375930 | 0.000926443 | -0.000926443 | 0.052391206 |
| 400.00 | EDUCATIONAL REV AUGMENTATION FD | 0.070472677 | 7.0472 % | 0.017375930 | 0.001224528 | EXEMPT | 0.070472677 |
| 400.01 | EDUCATIONAL AUG FD IMPOUND | 0.133767785 | 13.3767 % | 0.017375930 | 0.002324339 | EXEMPT | 0.133767785 |
| 400.15 | COUNTY SCHOOL SERVICES | 0.001317252 | 0.1317 % | 0.017375930 | 0.000022888 | EXEMPT | 0.001317252 |
| 400.21 | CHILDREN'S INSTIL TUITION FUND | 0.002614318 | 0.2614 % | 0.017375930 | 0.000045426 | EXEMPT | 0.002614318 |
| 581.01 | NEWHALL SCHOOL DISTRICT | 0.077024880 | 7.7024 % | 0.017375930 | 0.001338378 | EXEMPT | 0.077024880 |
| 581.06 | CO.SCH.SERV.FD.- NEWHALL | 0.007385616 | 0.7385 % | 0.017375930 | 0.000128331 | EXEMPT | 0.007385616 |
| 581.07 | DEV.CTR. HDCPD.MINOR-NEWHALL | 0.000813029 | 0.0813 % | 0.017375930 | 0.000014127 | EXEMPT | 0.000813029 |
| 757.02 | HART WILLIAM S UNION HIGH | 0.075201637 | 7.5201 % | 0.017375930 | 0.001306698 | EXEMPT | 0.075201637 |

ANNEXATION NUMBER: 1121

PROJECT NAME: A-SCV-1121

TRA: 00344

| ACCOUNT # | TAXING AGENCY | CURRENT TAX SHARE | PERCENT | PROPOSED DIST SHARE | ALLOCATED SHARE | ADJUSTMENTS | NET SHARE |
|-----------|----------------------------------|-------------------|------------|---------------------|-----------------|--------------|-------------|
| 757.06 | CO.SCH.SERV.FD.- HART,WILLIAM S. | 0.000313470 | 0.0313 % | 0.017375930 | 0.000005446 | EXEMPT | 0.000313470 |
| 757.07 | HART,WILLIAM S.-ELEM SCHOOL FUND | 0.039568775 | 3.9568 % | 0.017375930 | 0.000687544 | EXEMPT | 0.039568775 |
| 814.04 | SANTA CLARITA COMMUNITY COLLEGE | 0.034537403 | 3.4537 % | 0.017375930 | 0.000600119 | EXEMPT | 0.034537403 |
| ***067.35 | STA CLRTA VLY SANIT DIS OF LA CO | 0.000000000 | 0.0000 % | 0.017375930 | 0.000000000 | 0.000000000 | 0.009678106 |
| TOTAL: | | 1.000000000 | 100.0000 % | | 0.017375930 | -0.009678106 | 1.000000000 |

ANNEXATION TO: STA CLRTA VLY SANIT DIS OF LA CO
 ACCOUNT NUMBER: 067.35
 TRA: 00363
 EFFECTIVE DATE: 07/01/2023
 ANNEXATION NUMBER: 1121 PROJECT NAME: A-SCV-1121
 DISTRICT SHARE: 0.017375930

| ACCOUNT # | TAXING AGENCY | CURRENT TAX SHARE | PERCENT | PROPOSED DIST SHARE | ALLOCATED SHARE | ADJUSTMENTS | NET SHARE |
|-----------|----------------------------------|-------------------|-----------|---------------------|-----------------|--------------|-------------|
| 001.05 | LOS ANGELES COUNTY GENERAL | 0.203593598 | 20.3602 % | 0.017375930 | 0.003537639 | -0.003620769 | 0.199972829 |
| 001.20 | L.A. COUNTY ACCUM CAP OUTLAY | 0.000106232 | 0.0106 % | 0.017375930 | 0.000001845 | 0.000000000 | 0.000106232 |
| 007.30 | CONSOL. FIRE PRO.DIST.OF L.A.CO. | 0.163315333 | 16.3315 % | 0.017375930 | 0.002837755 | -0.002837755 | 0.160477578 |
| 007.31 | L A C FIRE-FFW | 0.004678050 | 0.4678 % | 0.017375930 | 0.000081285 | 0.000000000 | 0.004678050 |
| 030.10 | L.A.CO.FL.CON.DR.IMP.DIST.MAINT. | 0.001550932 | 0.1550 % | 0.017375930 | 0.000026948 | -0.000026948 | 0.001523984 |
| 030.70 | LA CO FLOOD CONTROL MAINT | 0.008777029 | 0.8777 % | 0.017375930 | 0.000152509 | -0.000152509 | 0.008624520 |
| 061.80 | GREATER L A CO VECTOR CONTROL | 0.000322714 | 0.0322 % | 0.017375930 | 0.000005607 | -0.000005607 | 0.000317107 |
| 249.01 | CITY-SANTA CLARITA TD #1 | 0.057345280 | 5.7345 % | 0.017375930 | 0.000996427 | -0.000996427 | 0.056348853 |
| 249.32 | STA CLRTA STREET LIGHT MAINT #2 | 0.020669206 | 2.0669 % | 0.017375930 | 0.000359146 | -0.000359146 | 0.020310060 |
| 249.56 | CITY-SANTA CLARITA LIBRARY | 0.021362386 | 2.1362 % | 0.017375930 | 0.000371191 | -0.000371191 | 0.020991195 |
| 302.01 | SANTA CLARITA VALLEY WATER-CLWA | 0.053317340 | 5.3317 % | 0.017375930 | 0.000926438 | -0.000926438 | 0.052390902 |
| 309.01 | SANTA CLARITA VALLEY WATER-NCW | 0.020774249 | 2.0774 % | 0.017375930 | 0.000360971 | -0.000360971 | 0.020413278 |
| 400.00 | EDUCATIONAL REV AUGMENTATION FD | 0.071644870 | 7.1644 % | 0.017375930 | 0.001244896 | EXEMPT | 0.071644870 |
| 400.01 | EDUCATIONAL AUG FD IMPOUND | 0.133767785 | 13.3767 % | 0.017375930 | 0.002324339 | EXEMPT | 0.133767785 |
| 400.15 | COUNTY SCHOOL SERVICES | 0.001317244 | 0.1317 % | 0.017375930 | 0.000022888 | EXEMPT | 0.001317244 |
| 400.21 | CHILDREN'S INSTIL TUITION FUND | 0.002614303 | 0.2614 % | 0.017375930 | 0.000045425 | EXEMPT | 0.002614303 |
| 581.01 | NEWHALL SCHOOL DISTRICT | 0.077024434 | 7.7024 % | 0.017375930 | 0.001338371 | EXEMPT | 0.077024434 |
| 581.06 | CO.SCH.SERV.FD.- NEWHALL | 0.007385574 | 0.7385 % | 0.017375930 | 0.000128331 | EXEMPT | 0.007385574 |
| 581.07 | DEV.CTR. HDCPD.MINOR-NEWHALL | 0.000813025 | 0.0813 % | 0.017375930 | 0.000014127 | EXEMPT | 0.000813025 |

ANNEXATION NUMBER: 1121

PROJECT NAME: A-SCV-1121

TRA: 00363

| ACCOUNT # | TAXING AGENCY | CURRENT TAX SHARE | PERCENT | PROPOSED DIST SHARE | ALLOCATED SHARE | ADJUSTMENTS | NET SHARE |
|-----------|----------------------------------|-------------------|------------|---------------------|-----------------|--------------|-------------|
| 757.02 | HART WILLIAM S UNION HIGH | 0.075201201 | 7.5201 % | 0.017375930 | 0.001306690 | EXEMPT | 0.075201201 |
| 757.06 | CO.SCH.SERV.FD.- HART,WILLIAM S. | 0.000313468 | 0.0313 % | 0.017375930 | 0.000005446 | EXEMPT | 0.000313468 |
| 757.07 | HART,WILLIAM S.-ELEM SCHOOL FUND | 0.039568545 | 3.9568 % | 0.017375930 | 0.000687540 | EXEMPT | 0.039568545 |
| 814.04 | SANTA CLARITA COMMUNITY COLLEGE | 0.034537202 | 3.4537 % | 0.017375930 | 0.000600116 | EXEMPT | 0.034537202 |
| ***067.35 | STA CLRTA VLY SANIT DIS OF LA CO | 0.000000000 | 0.0000 % | 0.017375930 | 0.000000000 | 0.000000000 | 0.009657761 |
| TOTAL: | | 1.000000000 | 100.0000 % | | 0.017375930 | -0.009657761 | 1.000000000 |

ANNEXATION TO: STA CLRTA VLY SANIT DIS OF LA CO
 ACCOUNT NUMBER: 067.35
 TRA: 15410
 EFFECTIVE DATE: 07/01/2023
 ANNEXATION NUMBER: 1121 PROJECT NAME: A-SCV-1121
 DISTRICT SHARE: 0.017375930

| ACCOUNT # | TAXING AGENCY | CURRENT TAX SHARE | PERCENT | PROPOSED DIST SHARE | ALLOCATED SHARE | ADJUSTMENTS | NET SHARE |
|-----------|----------------------------------|-------------------|-----------|---------------------|-----------------|--------------|-------------|
| 001.05 | LOS ANGELES COUNTY GENERAL | 0.217985159 | 21.7996 % | 0.017375930 | 0.003787705 | -0.003874886 | 0.214110273 |
| 001.20 | L.A. COUNTY ACCUM CAP OUTLAY | 0.000000000 | 0.0000 % | 0.017375930 | 0.000000000 | 0.000000000 | 0.000000000 |
| 007.30 | CONSOL. FIRE PRO.DIST.OF L.A.CO. | 0.169934902 | 16.9934 % | 0.017375930 | 0.002952776 | -0.002952776 | 0.166982126 |
| 007.31 | L A C FIRE-FFW | 0.005017358 | 0.5017 % | 0.017375930 | 0.000087181 | 0.000000000 | 0.005017358 |
| 030.10 | L.A.CO.FL.CON.DR.IMP.DIST.MAINT. | 0.001548187 | 0.1548 % | 0.017375930 | 0.000026901 | -0.000026901 | 0.001521286 |
| 030.70 | LA CO FLOOD CONTROL MAINT | 0.008761499 | 0.8761 % | 0.017375930 | 0.000152239 | -0.000152239 | 0.008609260 |
| 061.80 | GREATER L A CO VECTOR CONTROL | 0.000322140 | 0.0322 % | 0.017375930 | 0.000005597 | -0.000005597 | 0.000316543 |
| 249.01 | CITY-SANTA CLARITA TD #1 | 0.057243280 | 5.7243 % | 0.017375930 | 0.000994655 | -0.000994655 | 0.056248625 |
| 249.32 | STA CLRTA STREET LIGHT MAINT #2 | 0.020632570 | 2.0632 % | 0.017375930 | 0.000358510 | -0.000358510 | 0.020274060 |
| 249.56 | CITY-SANTA CLARITA LIBRARY | 0.021324546 | 2.1324 % | 0.017375930 | 0.000370533 | -0.000370533 | 0.020954013 |
| 302.01 | SANTA CLARITA VALLEY WATER-CLWA | 0.053222813 | 5.3222 % | 0.017375930 | 0.000924795 | -0.000924795 | 0.052298018 |
| 309.01 | SANTA CLARITA VALLEY WATER-NCW | 0.000990704 | 0.0990 % | 0.017375930 | 0.000017214 | -0.000017214 | 0.000973490 |
| 400.00 | EDUCATIONAL REV AUGMENTATION FD | 0.070472677 | 7.0472 % | 0.017375930 | 0.001224528 | EXEMPT | 0.070472677 |
| 400.01 | EDUCATIONAL AUG FD IMPOUND | 0.133767785 | 13.3767 % | 0.017375930 | 0.002324339 | EXEMPT | 0.133767785 |
| 400.15 | COUNTY SCHOOL SERVICES | 0.001317252 | 0.1317 % | 0.017375930 | 0.000022888 | EXEMPT | 0.001317252 |
| 400.21 | CHILDREN'S INSTIL TUITION FUND | 0.002614318 | 0.2614 % | 0.017375930 | 0.000045426 | EXEMPT | 0.002614318 |
| 581.01 | NEWHALL SCHOOL DISTRICT | 0.077024880 | 7.7024 % | 0.017375930 | 0.001338378 | EXEMPT | 0.077024880 |
| 581.06 | CO.SCH.SERV.FD.- NEWHALL | 0.007385616 | 0.7385 % | 0.017375930 | 0.000128331 | EXEMPT | 0.007385616 |
| 581.07 | DEV.CTR. HDCPD.MINOR-NEWHALL | 0.000813029 | 0.0813 % | 0.017375930 | 0.000014127 | EXEMPT | 0.000813029 |

ANNEXATION NUMBER: 1121

PROJECT NAME: A-SCV-1121

TRA: 15410

| ACCOUNT # | TAXING AGENCY | CURRENT TAX SHARE | PERCENT | PROPOSED DIST SHARE | ALLOCATED SHARE | ADJUSTMENTS | NET SHARE |
|-----------|----------------------------------|-------------------|------------|---------------------|-----------------|--------------|-------------|
| 757.02 | HART WILLIAM S UNION HIGH | 0.075201637 | 7.5201 % | 0.017375930 | 0.001306698 | EXEMPT | 0.075201637 |
| 757.06 | CO.SCH.SERV.FD.- HART,WILLIAM S. | 0.000313470 | 0.0313 % | 0.017375930 | 0.000005446 | EXEMPT | 0.000313470 |
| 757.07 | HART,WILLIAM S.-ELEM SCHOOL FUND | 0.039568775 | 3.9568 % | 0.017375930 | 0.000687544 | EXEMPT | 0.039568775 |
| 814.04 | SANTA CLARITA COMMUNITY COLLEGE | 0.034537403 | 3.4537 % | 0.017375930 | 0.000600119 | EXEMPT | 0.034537403 |
| ***067.35 | STA CLRTA VLY SANIT DIS OF LA CO | 0.000000000 | 0.0000 % | 0.017375930 | 0.000000000 | 0.000000000 | 0.009678106 |
| TOTAL: | | 1.000000000 | 100.0000 % | | 0.017375930 | -0.009678106 | 1.000000000 |

ANNEXATION TO: STA CLRTA VLY SANIT DIS OF LA CO
 ACCOUNT NUMBER: 067.35
 TRA: 16353
 EFFECTIVE DATE: 07/01/2023
 ANNEXATION NUMBER: 1121 PROJECT NAME: A-SCV-1121
 DISTRICT SHARE: 0.017375930

| ACCOUNT # | TAXING AGENCY | CURRENT TAX SHARE | PERCENT | PROPOSED DIST SHARE | ALLOCATED SHARE | ADJUSTMENTS | NET SHARE |
|-----------|----------------------------------|-------------------|-----------|---------------------|-----------------|--------------|-------------|
| 001.05 | LOS ANGELES COUNTY GENERAL | 0.217629174 | 21.7640 % | 0.017375930 | 0.003781521 | -0.003868533 | 0.213760641 |
| 001.20 | L.A. COUNTY ACCUM CAP OUTLAY | 0.000007622 | 0.0007 % | 0.017375930 | 0.000000132 | 0.000000000 | 0.000007622 |
| 007.30 | CONSOL. FIRE PRO.DIST.OF L.A.CO. | 0.169741106 | 16.9741 % | 0.017375930 | 0.002949409 | -0.002949409 | 0.166791697 |
| 007.31 | L A C FIRE-FFW | 0.005000073 | 0.5000 % | 0.017375930 | 0.000086880 | 0.000000000 | 0.005000073 |
| 030.10 | L.A.CO.FL.CON.DR.IMP.DIST.MAINT. | 0.001546002 | 0.1546 % | 0.017375930 | 0.000026863 | -0.000026863 | 0.001519139 |
| 030.70 | LA CO FLOOD CONTROL MAINT | 0.008748966 | 0.8748 % | 0.017375930 | 0.000152021 | -0.000152021 | 0.008596945 |
| 061.80 | GREATER L A CO VECTOR CONTROL | 0.000322714 | 0.0322 % | 0.017375930 | 0.000005607 | -0.000005607 | 0.000317107 |
| 249.01 | CITY-SANTA CLARITA TD #1 | 0.057345280 | 5.7345 % | 0.017375930 | 0.000996427 | -0.000996427 | 0.056348853 |
| 249.32 | STA CLRTA STREET LIGHT MAINT #2 | 0.020625135 | 2.0625 % | 0.017375930 | 0.000358380 | -0.000358380 | 0.020266755 |
| 249.56 | CITY-SANTA CLARITA LIBRARY | 0.021308407 | 2.1308 % | 0.017375930 | 0.000370253 | -0.000370253 | 0.020938154 |
| 302.01 | SANTA CLARITA VALLEY WATER-CLWA | 0.053176438 | 5.3176 % | 0.017375930 | 0.000923990 | -0.000923990 | 0.052252448 |
| 309.01 | SANTA CLARITA VALLEY WATER-NCW | 0.000919628 | 0.0919 % | 0.017375930 | 0.000015979 | -0.000015979 | 0.000903649 |
| 400.00 | EDUCATIONAL REV AUGMENTATION FD | 0.071561535 | 7.1561 % | 0.017375930 | 0.001243448 | EXEMPT | 0.071561535 |
| 400.01 | EDUCATIONAL AUG FD IMPOUND | 0.133767785 | 13.3767 % | 0.017375930 | 0.002324339 | EXEMPT | 0.133767785 |
| 400.15 | COUNTY SCHOOL SERVICES | 0.001314648 | 0.1314 % | 0.017375930 | 0.000022843 | EXEMPT | 0.001314648 |
| 400.21 | CHILDREN'S INSTIL TUITION FUND | 0.002609147 | 0.2609 % | 0.017375930 | 0.000045336 | EXEMPT | 0.002609147 |
| 581.01 | NEWHALL SCHOOL DISTRICT | 0.076871219 | 7.6871 % | 0.017375930 | 0.001335708 | EXEMPT | 0.076871219 |
| 581.06 | CO.SCH.SERV.FD.- NEWHALL | 0.007370853 | 0.7370 % | 0.017375930 | 0.000128075 | EXEMPT | 0.007370853 |
| 581.07 | DEV.CTR. HDCPD.MINOR-NEWHALL | 0.000811459 | 0.0811 % | 0.017375930 | 0.000014099 | EXEMPT | 0.000811459 |

ANNEXATION NUMBER: 1121

PROJECT NAME: A-SCV-1121

TRA: 16353

| ACCOUNT # | TAXING AGENCY | CURRENT TAX SHARE | PERCENT | PROPOSED DIST SHARE | ALLOCATED SHARE | ADJUSTMENTS | NET SHARE |
|-----------|----------------------------------|-------------------|------------|---------------------|-----------------|--------------|-------------|
| 757.02 | HART WILLIAM S UNION HIGH | 0.075051655 | 7.5051 % | 0.017375930 | 0.001304092 | EXEMPT | 0.075051655 |
| 757.06 | CO.SCH.SERV.FD.- HART,WILLIAM S. | 0.000312840 | 0.0312 % | 0.017375930 | 0.000005435 | EXEMPT | 0.000312840 |
| 757.07 | HART,WILLIAM S.-ELEM SCHOOL FUND | 0.039489839 | 3.9489 % | 0.017375930 | 0.000686172 | EXEMPT | 0.039489839 |
| 814.04 | SANTA CLARITA COMMUNITY COLLEGE | 0.034468475 | 3.4468 % | 0.017375930 | 0.000598921 | EXEMPT | 0.034468475 |
| ***067.35 | STA CLRTA VLY SANIT DIS OF LA CO | 0.000000000 | 0.0000 % | 0.017375930 | 0.000000000 | 0.000000000 | 0.009667462 |
| TOTAL: | | 1.000000000 | 100.0000 % | | 0.017375930 | -0.009667462 | 1.000000000 |

SANTA CLARITA VALLEY SANITATION DISTRICT OF LOS ANGELES COUNTY

PROPOSED ANNEXATION NO. 1122

AGENDA DATE: Resolution Making Application to LAFCO June 20, 2023

LOCATION: Located at the southern terminus of Mandolin Canyon Road, north and south of Sloan Canyon Road, and east of Valley Creek Road, all within Unincorporated Los Angeles County, as shown on the attached map.

| | | |
|-------------------------|-----------------------------------|---------------------|
| PROCESSING FEES: | District | \$ 20,325.00 |
| | Local Agency Formation Commission | 8,000.00 |
| | State Board of Equalization | <u>2,000.00</u> |
| | Total: | \$ <u>30,325.00</u> |

DESCRIPTION & REMARKS: The annexation consists of 137 proposed single-family homes.

NOTICE OF FINDING/CERTIFICATE OF FILING

ANNEXATION NO. 1122 TO SANTA CLARITA VALLEY SANITATION DISTRICT

The annexation consists of 137 proposed single-family homes.

1. **BASED UPON REVIEW AND STUDY, I FIND AND CERTIFY THAT:**

- The annexation **is exempt** from the provisions of the California Environmental Quality Act, pursuant to the State CEQA Guidelines,

Section:

Reason:

- The **Mitigated Negative Declaration** is adequate for consideration of the annexation.

- The **Environmental Impact Report** is acceptable for consideration of the annexation.

ISSUED BY:

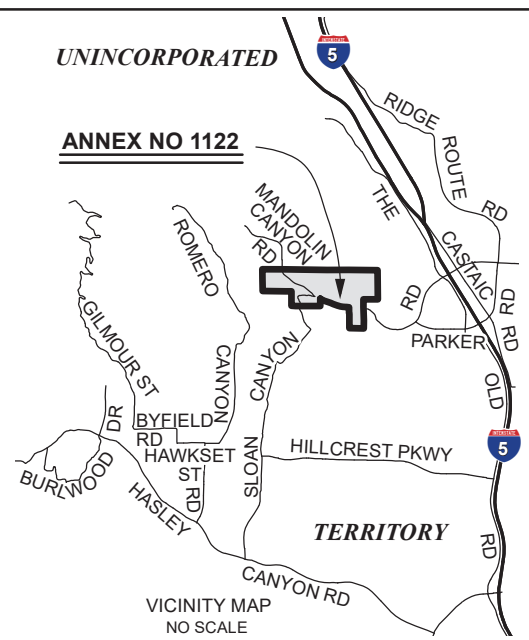
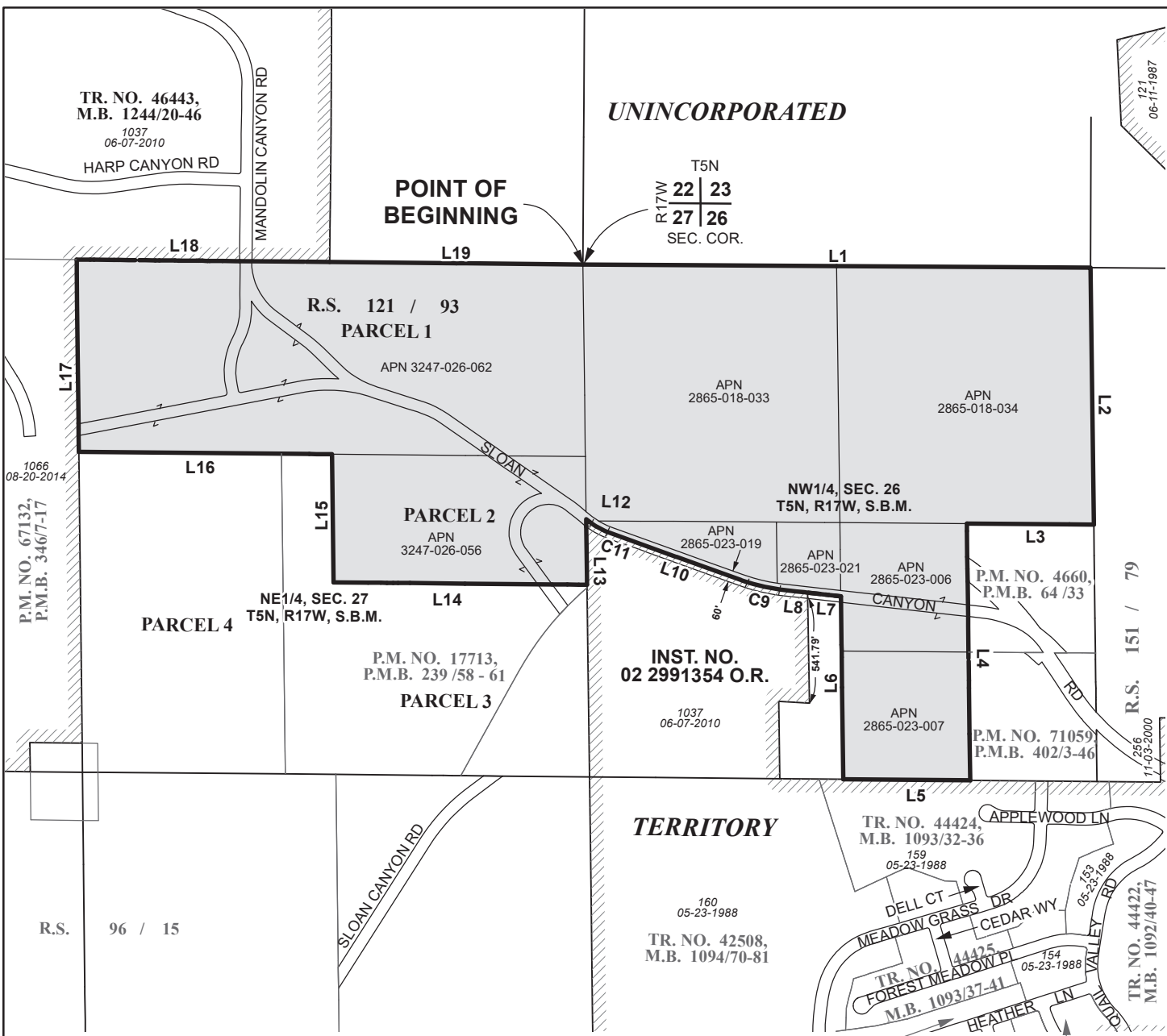
- Los Angeles County Department of Regional Planning

- City of

2. The subject annexation has been set for consideration before the Board of Directors of Santa Clarita Valley Sanitation District at their meeting to be held on June 20, 2023, at the time and place as provided for the meeting of said date.
3. The subject annexation and all related documents are on file in the office of the Chief Engineer and General Manager, Los Angeles County Sanitation Districts, 1955 Workman Mill Road, (P.O. Box 4998) Whittier, California and may be examined by any interested person for further particulars. Telephone: (562) 908-4288, extension 2708.

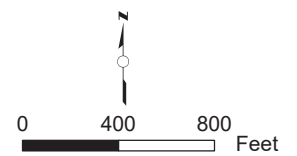


Stan Pegadiotes
Division Engineer
Facilities Planning Department



COURSE DATA

| | | |
|-----|-------------------------------------|----------|
| L1 | S 89°49'35" E | 2622.33' |
| L2 | S 00°56'50" E | 1327.97' |
| L3 | N 89°45'37" W | 655.64' |
| L4 | S 00°56'44" E | 1327.22' |
| L5 | N 89°41'40" W | 655.69' |
| L6 | N 00°56'38" W | 945.57' |
| L7 | N 83°47'50" W | 173.07' |
| L8 | N 83°47'50" W | 120.89' |
| C9 | R= 1000.00 L = 233.00' D= 13°21'10" | |
| L10 | N 70°26'50" W | 715.75' |
| C11 | R= 400.00 L = 134.24' D= 19°13'40" | |
| L12 | N 51°13'10" W | 9.82' |
| L13 | S 00°56'25" E | 339.45' |
| L14 | N 89°38'25" W | 1309.41' |
| L15 | N 00°53'25" W | 662.30' |
| L16 | N 89°38'25" W | 1308.84' |
| L17 | N 00°50'26" W | 993.99' |
| L18 | S 89°38'25" E | 1307.97' |
| L19 | S 89°38'25" E | 1307.97' |



"FOR TAX ASSESSMENT PURPOSES ONLY"

Annexation No. 1122 shown thus

Boundary of Santa Clarita Valley Sanitation District
Prior to Annexation No. 1122 shown thus

Prior Annexations shown thus

Area of Annexation 186.441 Acres

ANNEX. NO.
(RECORDING DATE)

SANTA CLARITA VALLEY
SANITATION DISTRICT
OF LOS ANGELES COUNTY, CA
OFFICE OF CHIEF ENGINEER
ROBERT C. FERRANTE
CHIEF ENGINEER & GENERAL MANAGER

ANNEXATION NO. 1122
TO
SANTA CLARITA VALLEY
SANITATION DISTRICT

Recorded:

LA County Assessor Landbase,
CAMS Centerline, DPW City boundary
LA County Sanitation Districts:
AnnexationLayer and District Layer

JOINT RESOLUTION OF THE BOARD OF SUPERVISORS OF THE COUNTY OF LOS ANGELES
ACTING IN BEHALF OF

- Los Angeles County General Fund
- Los Angeles County Library
- Los Angeles County Road District #5
- Los Angeles County Consolidated Fire Protection District
- Los Angeles County Flood Control

THE BOARD OF DIRECTORS OF SANTA CLARITA VALLEY SANITATION DISTRICT OF LOS ANGELES COUNTY, AND THE GOVERNING BODIES OF

- Greater Los Angeles County Vector Control District
- Antelope Valley Resource Conservation District
- Santa Clarita Valley Water Agency

APPROVING AND ACCEPTING NEGOTIATED EXCHANGE OF PROPERTY TAX REVENUES
RESULTING FROM ANNEXATION TO SANTA CLARITA VALLEY SANITATION DISTRICT

"ANNEXATION NO. 1122"

WHEREAS, pursuant to Section 99 and 99.01 of the Revenue and Taxation Code, prior to the effective date of any jurisdictional change which will result in a special district providing a new service, the governing bodies of all local agencies that receive an apportionment of the property tax from the area must determine the amount of property tax revenues from the annual tax increment to be exchanged between the affected agencies and approve and accept the negotiated exchange of property tax revenues by resolution; and

WHEREAS, the governing bodies of the agencies signatory hereto have made determinations of the amount of property tax revenues from the annual tax increments to be exchanged as a result of the annexation to Santa Clarita Valley Sanitation District entitled *Annexation No. 1122*;

NOW, THEREFORE, BE IT RESOLVED AS FOLLOWS:

1. The negotiated exchange of property tax revenues resulting from the annexation of territory to Santa Clarita Valley Sanitation District in the annexation entitled *Annexation No. 1122* is approved and accepted.
2. For each fiscal year commencing on July 1, 2022, or after the effective date of this jurisdictional change, whichever is later, the County Auditor shall transfer to Santa Clarita Valley Sanitation District a total of 0.9433852 percent of the annual tax increment attributable to the land area encompassed within *Annexation No. 1122* for Tax Rate Area 02640 as shown on the attached Worksheet.
3. For each fiscal year commencing on July 1, 2022, or after the effective date of this jurisdictional change, whichever is later, the County Auditor shall transfer to Santa Clarita Valley

Sanitation District a total of 0.9291310 percent of the annual tax increment attributable to the land area encompassed within *Annexation No. 1122* for Tax Rate Area 10701 as shown on the attached Worksheet.

4. No additional transfer of property tax revenues shall be made from any other tax agencies to Santa Clarita Valley Sanitation District as a result of annexation entitled *Annexation No. 1122*.

5. No transfer of property tax increments from properties within a community redevelopment project, which are legally committed to a Community Redevelopment Agency, shall be made during the period that such tax increment is legally committed for repayment of the redevelopment project costs.

6. If at any time after the effective date of this resolution, the calculations used herein to determine initial property tax transfers or the data used to perform those calculations are found to be incorrect thus producing an improper or inaccurate property tax transfer, the property tax transfer shall be recalculated and the corrected transfer shall be implemented for the next fiscal year.

The foregoing resolution was adopted by the Board of Supervisors of the County of Los Angeles, the Board of Directors of Santa Clarita Valley Sanitation District of Los Angeles County, and the governing bodies of Greater Los Angeles County Vector Control District, Antelope Valley Resource Conservation District, and Santa Clarita Valley Water Agency, signatory hereto.

SANTA CLARITA VALLEY SANITATION
DISTRICT OF LOS ANGELES COUNTY

Chairperson, Board of Directors

ATTEST:

Secretary

Date

(SIGNED IN COUNTERPART)

ANNEXATION TO: STA CLRTA VLY SANIT DIS OF LA CO
 ACCOUNT NUMBER: 067.35
 TRA: 02640
 EFFECTIVE DATE: 07/01/2023
 ANNEXATION NUMBER: 1122 PROJECT NAME: A-SCV-1122
 DISTRICT SHARE: 0.017375930

| ACCOUNT # | TAXING AGENCY | CURRENT TAX SHARE | PERCENT | PROPOSED DIST SHARE | ALLOCATED SHARE | ADJUSTMENTS | NET SHARE |
|-----------|----------------------------------|-------------------|-----------|---------------------|-----------------|--------------|-------------|
| 001.05 | LOS ANGELES COUNTY GENERAL | 0.228036057 | 22.8047 % | 0.017375930 | 0.003962348 | -0.004055673 | 0.223980384 |
| 001.20 | L.A. COUNTY ACCUM CAP OUTLAY | 0.000132171 | 0.0132 % | 0.017375930 | 0.000002296 | 0.000000000 | 0.000132171 |
| 003.01 | L A COUNTY LIBRARY | 0.027984885 | 2.7984 % | 0.017375930 | 0.000486263 | -0.000486263 | 0.027498622 |
| 005.25 | ROAD DIST # 5 | 0.007285276 | 0.7285 % | 0.017375930 | 0.000126588 | -0.000126588 | 0.007158688 |
| 007.30 | CONSOL. FIRE PRO.DIST.OF L.A.CO. | 0.185810671 | 18.5810 % | 0.017375930 | 0.003228633 | -0.003228633 | 0.182582038 |
| 007.31 | L A C FIRE-FFW | 0.005238842 | 0.5238 % | 0.017375930 | 0.000091029 | 0.000000000 | 0.005238842 |
| 030.10 | L.A.CO.FL.CON.DR.IMP.DIST.MAINT. | 0.002160417 | 0.2160 % | 0.017375930 | 0.000037539 | -0.000037539 | 0.002122878 |
| 030.70 | LA CO FLOOD CONTROL MAINT | 0.012226457 | 1.2226 % | 0.017375930 | 0.000212446 | -0.000212446 | 0.012014011 |
| 051.70 | L A CO WATER WKS NO 36 CAP OUT | 0.007731987 | 0.7731 % | 0.017375930 | 0.000134350 | -0.000134350 | 0.007597637 |
| 068.05 | ANTELOPE VY RESOURCE CONSER DIST | 0.000000000 | 0.0000 % | 0.017375930 | 0.000000000 | 0.000000000 | 0.000000000 |
| 302.01 | SANTA CLARITA VALLEY WATER-CLWA | 0.066319379 | 6.6319 % | 0.017375930 | 0.001152360 | -0.001152360 | 0.065167019 |
| 400.00 | EDUCATIONAL REV AUGMENTATION FD | 0.051205152 | 5.1205 % | 0.017375930 | 0.000889737 | EXEMPT | 0.051205152 |
| 400.01 | EDUCATIONAL AUG FD IMPOUND | 0.131877650 | 13.1877 % | 0.017375930 | 0.002291496 | EXEMPT | 0.131877650 |
| 400.15 | COUNTY SCHOOL SERVICES | 0.001638656 | 0.1638 % | 0.017375930 | 0.000028473 | EXEMPT | 0.001638656 |
| 400.21 | CHILDREN'S INSTIL TUITION FUND | 0.003252024 | 0.3252 % | 0.017375930 | 0.000056506 | EXEMPT | 0.003252024 |
| 440.01 | CASTAIC UNION SCHOOL DISTRICT | 0.068486047 | 6.8486 % | 0.017375930 | 0.001190008 | EXEMPT | 0.068486047 |
| 440.06 | CO.SCH.SERV.FD.- CASTAIC UNION | 0.013338863 | 1.3338 % | 0.017375930 | 0.000231775 | EXEMPT | 0.013338863 |
| 440.07 | DEV.CTR. HDCPD.MINOR-CASTAIC | 0.001168975 | 0.1168 % | 0.017375930 | 0.000020312 | EXEMPT | 0.001168975 |
| 757.02 | HART WILLIAM S UNION HIGH | 0.093539615 | 9.3539 % | 0.017375930 | 0.001625337 | EXEMPT | 0.093539615 |

ANNEXATION NUMBER: 1122

PROJECT NAME: A-SCV-1122

TRA: 02640

| ACCOUNT # | TAXING AGENCY | CURRENT TAX SHARE | PERCENT | PROPOSED DIST SHARE | ALLOCATED SHARE | ADJUSTMENTS | NET SHARE |
|-----------|-----------------------------------|-------------------|------------|---------------------|-----------------|--------------|-------------|
| 757.06 | CO.SCH.SERV.FD. - HART,WILLIAM S. | 0.000389771 | 0.0389 % | 0.017375930 | 0.000006772 | EXEMPT | 0.000389771 |
| 757.07 | HART,WILLIAM S.-ELEM SCHOOL FUND | 0.049217677 | 4.9217 % | 0.017375930 | 0.000855202 | EXEMPT | 0.049217677 |
| 814.04 | SANTA CLARITA COMMUNITY COLLEGE | 0.042959428 | 4.2959 % | 0.017375930 | 0.000746460 | EXEMPT | 0.042959428 |
| ***067.35 | STA CLRTA VLY SANIT DIS OF LA CO | 0.000000000 | 0.0000 % | 0.017375930 | 0.000000000 | 0.000000000 | 0.009433852 |
| TOTAL: | | 1.000000000 | 100.0000 % | | 0.017375930 | -0.009433852 | 1.000000000 |

ANNEXATION TO: STA CLRTA VLY SANIT DIS OF LA CO
 ACCOUNT NUMBER: 067.35
 TRA: 10701
 EFFECTIVE DATE: 07/01/2023
 ANNEXATION NUMBER: 1122 PROJECT NAME: A-SCV-1122
 DISTRICT SHARE: 0.017375930

| ACCOUNT # | TAXING AGENCY | CURRENT TAX SHARE | PERCENT | PROPOSED DIST SHARE | ALLOCATED SHARE | ADJUSTMENTS | NET SHARE |
|-----------|----------------------------------|-------------------|-----------|---------------------|-----------------|--------------|-------------|
| 001.05 | LOS ANGELES COUNTY GENERAL | 0.188097545 | 18.8109 % | 0.017375930 | 0.003268381 | -0.003345627 | 0.184751918 |
| 001.20 | L.A. COUNTY ACCUM CAP OUTLAY | 0.000123116 | 0.0123 % | 0.017375930 | 0.000002139 | 0.000000000 | 0.000123116 |
| 003.01 | L A COUNTY LIBRARY | 0.025666869 | 2.5666 % | 0.017375930 | 0.000445985 | -0.000445985 | 0.025220884 |
| 005.25 | ROAD DIST # 5 | 0.006785392 | 0.6785 % | 0.017375930 | 0.000117902 | -0.000117902 | 0.006667490 |
| 007.30 | CONSOL. FIRE PRO.DIST.OF L.A.CO. | 0.185810671 | 18.5810 % | 0.017375930 | 0.003228633 | -0.003228633 | 0.182582038 |
| 007.31 | L A C FIRE-FFW | 0.004322519 | 0.4322 % | 0.017375930 | 0.000075107 | 0.000000000 | 0.004322519 |
| 030.10 | L.A.CO.FL.CON.DR.IMP.DIST.MAINT. | 0.001947099 | 0.1947 % | 0.017375930 | 0.000033832 | -0.000033832 | 0.001913267 |
| 030.70 | LA CO FLOOD CONTROL MAINT | 0.011019301 | 1.1019 % | 0.017375930 | 0.000191470 | -0.000191470 | 0.010827831 |
| 061.80 | GREATER L A CO VECTOR CONTROL | 0.000322714 | 0.0322 % | 0.017375930 | 0.000005607 | -0.000005607 | 0.000317107 |
| 068.05 | ANTELOPE VY RESOURCE CONSER DIST | 0.000000000 | 0.0000 % | 0.017375930 | 0.000000000 | 0.000000000 | 0.000000000 |
| 302.01 | SANTA CLARITA VALLEY WATER-CLWA | 0.061768645 | 6.1768 % | 0.017375930 | 0.001073287 | -0.001073287 | 0.060695358 |
| 309.01 | SANTA CLARITA VALLEY WATER-NCW | 0.001321829 | 0.1321 % | 0.017375930 | 0.000022968 | -0.000022968 | 0.001298861 |
| 309.04 | STA CLRTA VALLEY WTR-NCW01 | 0.047537013 | 4.7537 % | 0.017375930 | 0.000825999 | -0.000825999 | 0.046711014 |
| 400.00 | EDUCATIONAL REV AUGMENTATION FD | 0.078208979 | 7.8208 % | 0.017375930 | 0.001358953 | EXEMPT | 0.078208979 |
| 400.01 | EDUCATIONAL AUG FD IMPOUND | 0.131877650 | 13.1877 % | 0.017375930 | 0.002291496 | EXEMPT | 0.131877650 |
| 400.15 | COUNTY SCHOOL SERVICES | 0.001526050 | 0.1526 % | 0.017375930 | 0.000026516 | EXEMPT | 0.001526050 |
| 400.21 | CHILDREN'S INSTIL TUITION FUND | 0.003028754 | 0.3028 % | 0.017375930 | 0.000052627 | EXEMPT | 0.003028754 |
| 440.01 | CASTAIC UNION SCHOOL DISTRICT | 0.063786668 | 6.3786 % | 0.017375930 | 0.001108352 | EXEMPT | 0.063786668 |
| 440.06 | CO.SCH.SERV.FD.- CASTAIC UNION | 0.012423667 | 1.2423 % | 0.017375930 | 0.000215872 | EXEMPT | 0.012423667 |

ANNEXATION NUMBER: 1122

PROJECT NAME: A-SCV-1122

TRA: 10701

| ACCOUNT # | TAXING AGENCY | CURRENT TAX SHARE | PERCENT | PROPOSED DIST SHARE | ALLOCATED SHARE | ADJUSTMENTS | NET SHARE |
|-----------|-----------------------------------|----------------------|------------|------------------------|--------------------|--------------|-------------|
| 440.07 | DEV.CTR. HDCPD.MINOR-CASTAIC | 0.001088877 | 0.1088 % | 0.017375930 | 0.000018920 | EXEMPT | 0.001088877 |
| 757.02 | HART WILLIAM S UNION HIGH | 0.087121221 | 8.7121 % | 0.017375930 | 0.001513812 | EXEMPT | 0.087121221 |
| 757.06 | CO.SCH.SERV.FD. - HART,WILLIAM S. | 0.000363205 | 0.0363 % | 0.017375930 | 0.000006311 | EXEMPT | 0.000363205 |
| 757.07 | HART,WILLIAM S.-ELEM SCHOOL FUND | 0.045840470 | 4.5840 % | 0.017375930 | 0.000796520 | EXEMPT | 0.045840470 |
| 814.04 | SANTA CLARITA COMMUNITY COLLEGE | 0.040011746 | 4.0011 % | 0.017375930 | 0.000695241 | EXEMPT | 0.040011746 |
| ***067.35 | STA CLRTA VLY SANIT DIS OF LA CO | 0.000000000 | 0.0000 % | 0.017375930 | 0.000000000 | 0.000000000 | 0.009291310 |
| TOTAL: | | 1.000000000 | 100.0000 % | | 0.017375930 | -0.009291310 | 1.000000000 |

SANTA CLARITA VALLEY SANITATION DISTRICT OF LOS ANGELES COUNTY

PROPOSED ANNEXATION NO. 1129

AGENDA DATE: Resolution Making Application to LAFCO June 20, 2023

LOCATION: Located on the south side of Violin Canyon Road, approximately 600 feet southeast of Lake Hughes Road, all within Unincorporated Los Angeles County, as shown on the attached map.

| | | |
|-------------------------|-----------------------------------|--------------------|
| PROCESSING FEES: | District | \$ 1,450.00 |
| | Local Agency Formation Commission | 2,500.00 |
| | State Board of Equalization | <u>300.00</u> |
| | Total: | \$ <u>4,250.00</u> |

DESCRIPTION & REMARKS: The annexation consists of nine proposed apartments.

NOTICE OF FINDING/CERTIFICATE OF FILING

ANNEXATION NO. 1129 TO SANTA CLARITA VALLEY SANITATION DISTRICT

The annexation consists of nine proposed apartments.

1. **BASED UPON REVIEW AND STUDY, I FIND AND CERTIFY THAT:**

- The annexation **is exempt** from the provisions of the California Environmental Quality Act, pursuant to the State CEQA Guidelines,

Section: 15319(b)

Reason: Annexations of small parcels of the minimum size for facilities exempted by Section 15303, New Construction or Conversion of Small Structures

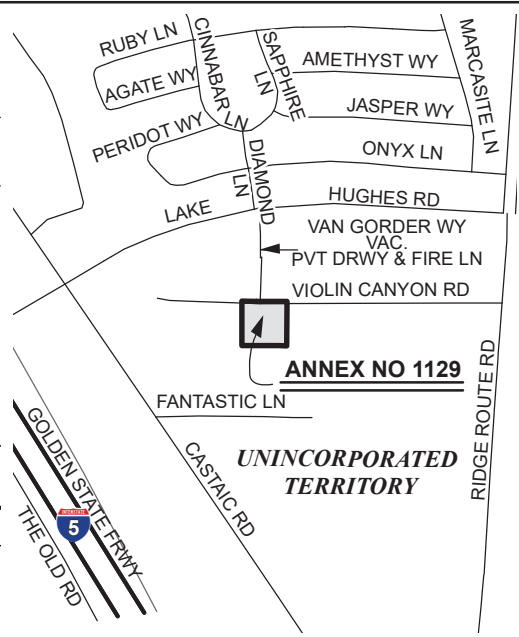
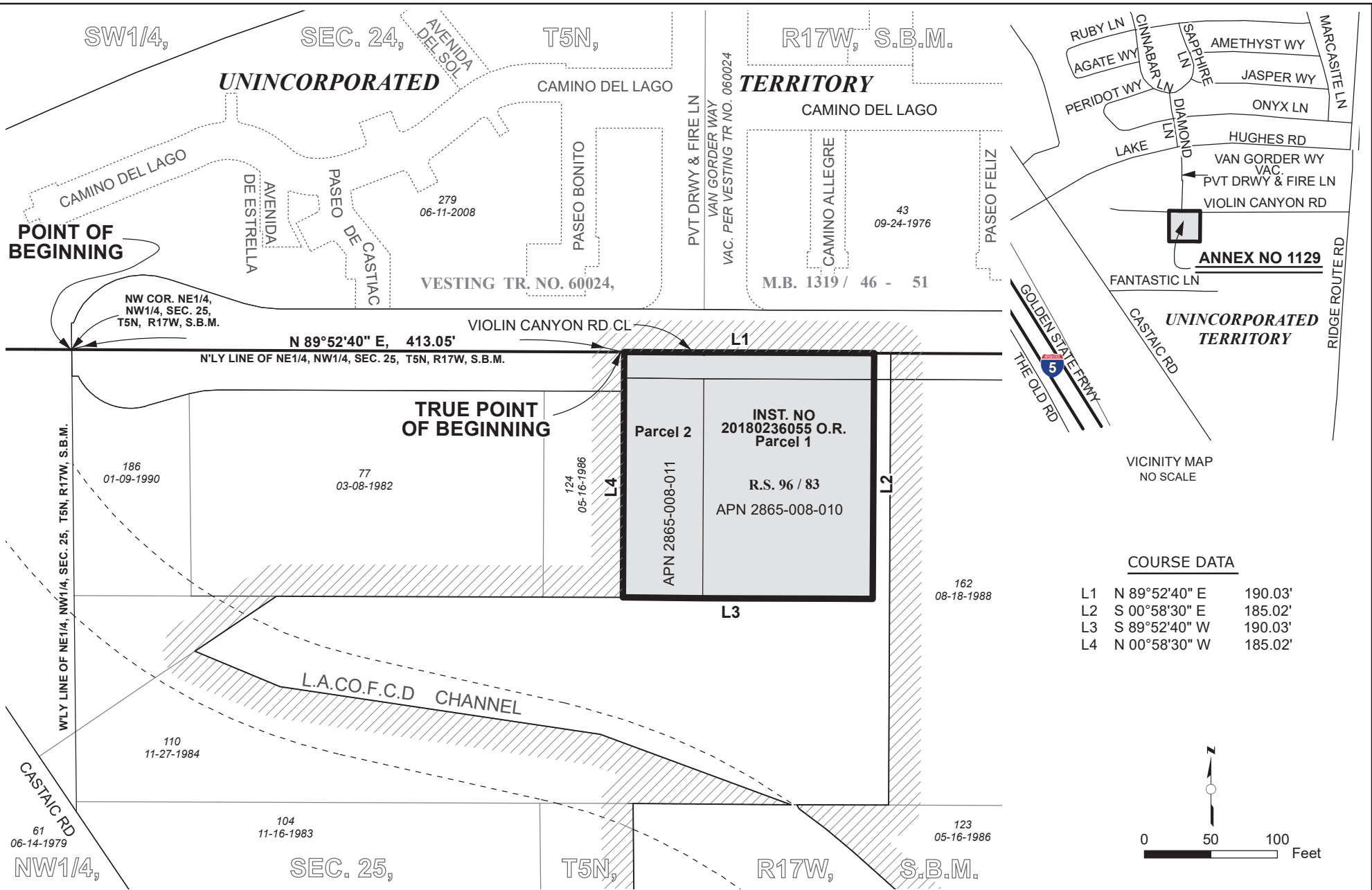
- The **Negative Declaration** is adequate for consideration of the annexation.

- The **Environmental Impact Report** is acceptable for consideration of the annexation.

2. The subject annexation has been set for consideration before the Board of Directors of Santa Clarita Valley Sanitation District at their meeting to be held on June 20, 2023, at the time and place as provided for the meeting of said date.
3. The subject annexation and all related documents are on file in the office of the Chief Engineer and General Manager, Los Angeles County Sanitation Districts, 1955 Workman Mill Road, (P.O. Box 4998) Whittier, California and may be examined by any interested person for further particulars. Telephone: (562) 908-4288, extension 2708.

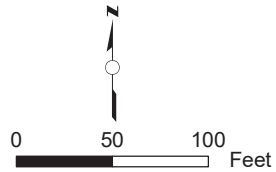


Stan Pegadiotes
Division Engineer
Facilities Planning Department





COURSE DATA

| | | |
|----|---------------|---------|
| L1 | N 89°52'40" E | 190.03' |
| L2 | S 00°58'30" E | 185.02' |
| L3 | S 89°52'40" W | 190.03' |
| L4 | N 00°58'30" W | 185.02' |



"FOR TAX ASSESSMENT PURPOSES ONLY"

LA County Assessor Landbase,
CAMS Centerline, DPW City boundary
LA County Sanitation Districts:
AnnexationLayer and District Layer

Annexation No. 1129 shown thus 
 Boundary of Santa Clarita Valley Sanitation District
 Prior to Annexation No. 1129 shown thus 
 Prior Annexations shown thus
 Area of Annexation 0.807 Acres

ANNEX. NO.
(RECORDING DATE)

SANTA CLARITA VALLEY
SANITATION DISTRICT
OF LOS ANGELES COUNTY, CA
OFFICE OF CHIEF ENGINEER
ROBERT C. FERRANTE
CHIEF ENGINEER & GENERAL MANAGER
ANNEXATION NO. 1129
TO
SANTA CLARITA VALLEY
SANITATION DISTRICT
Recorded:

JOINT RESOLUTION OF THE BOARD OF SUPERVISORS OF THE COUNTY OF LOS ANGELES
ACTING IN BEHALF OF

- Los Angeles County General Fund
- Los Angeles County Library
- Los Angeles County Road District #5
- Los Angeles County Consolidated Fire Protection District
- Los Angeles County Flood Control
- Los Angeles County Lighting Maintenance District No. 1687

THE BOARD OF DIRECTORS OF SANTA CLARITA VALLEY SANITATION DISTRICT OF LOS ANGELES COUNTY, AND THE GOVERNING BODIES OF

- Greater Los Angeles County Vector Control District
- Antelope Valley Resource Conservation District
- Santa Clarita Valley Water Agency

APPROVING AND ACCEPTING NEGOTIATED EXCHANGE OF PROPERTY TAX REVENUES
RESULTING FROM ANNEXATION TO SANTA CLARITA VALLEY SANITATION DISTRICT

"ANNEXATION NO. 1129"

WHEREAS, pursuant to Section 99 and 99.01 of the Revenue and Taxation Code, prior to the effective date of any jurisdictional change which will result in a special district providing a new service, the governing bodies of all local agencies that receive an apportionment of the property tax from the area must determine the amount of property tax revenues from the annual tax increment to be exchanged between the affected agencies and approve and accept the negotiated exchange of property tax revenues by resolution; and

WHEREAS, the governing bodies of the agencies signatory hereto have made determinations of the amount of property tax revenues from the annual tax increments to be exchanged as a result of the annexation to Santa Clarita Valley Sanitation District entitled *Annexation No. 1129*;

NOW, THEREFORE, BE IT RESOLVED AS FOLLOWS:

1. The negotiated exchange of property tax revenues resulting from the annexation of territory to Santa Clarita Valley Sanitation District in the annexation entitled *annexation No. 1129* is approved and accepted.

2. For each fiscal year commencing on July 1, 2022, or after the effective date of this jurisdictional change, whichever is later, the County Auditor shall transfer to Santa Clarita Valley Sanitation District a total of 0.9746910 percent of the annual tax increment attributable to the land area encompassed within annexation *No. 1129* for Tax Rate Areas 11884 and 08975 as shown on the attached Worksheet.

3. No additional transfer of property tax revenues shall be made from any other tax agencies to Santa Clarita Valley Sanitation District as a result of annexation entitled annexation *No. 1129*.

4. No transfer of property tax increments from properties within a community redevelopment project, which are legally committed to a Community Redevelopment Agency, shall be made during the period that such tax increment is legally committed for repayment of the redevelopment project costs.

5. If at any time after the effective date of this resolution, the calculations used herein to determine initial property tax transfers or the data used to perform those calculations are found to be incorrect thus producing an improper or inaccurate property tax transfer, the property tax transfer shall be recalculated and the corrected transfer shall be implemented for the next fiscal year.

The foregoing resolution was adopted by the Board of Supervisors of the County of Los Angeles, the Board of Directors of Santa Clarita Valley Sanitation District of Los Angeles County, and the governing bodies of Greater Los Angeles County Vector Control District, Antelope Valley Resource Conservation District, and Santa Clarita Valley Water Agency, signatory hereto.

SANTA CLARITA VALLEY SANITATION
DISTRICT OF LOS ANGELES COUNTY

Chairperson, Board of Directors

ATTEST:

Secretary

Date

(SIGNED IN COUNTERPART)

ANNEXATION TO: STA CLRTA VLY SANIT DIS OF LA CO
 ACCOUNT NUMBER: 067.35
 TRA: 08975
 EFFECTIVE DATE: 07/01/2023
 ANNEXATION NUMBER: 1129 PROJECT NAME: A-SCV-1129
 DISTRICT SHARE: 0.017375930

| ACCOUNT # | TAXING AGENCY | CURRENT TAX SHARE | PERCENT | PROPOSED DIST SHARE | ALLOCATED SHARE | ADJUSTMENTS | NET SHARE |
|-----------|----------------------------------|-------------------|-----------|---------------------|-----------------|--------------|-------------|
| 001.05 | LOS ANGELES COUNTY GENERAL | 0.270514031 | 27.0524 % | 0.017375930 | 0.004700442 | -0.004810204 | 0.265703827 |
| 001.20 | L.A. COUNTY ACCUM CAP OUTLAY | 0.000103486 | 0.0103 % | 0.017375930 | 0.000001798 | 0.000000000 | 0.000103486 |
| 003.01 | L A COUNTY LIBRARY | 0.020661558 | 2.0661 % | 0.017375930 | 0.000359013 | -0.000359013 | 0.020302545 |
| 005.25 | ROAD DIST # 5 | 0.005705964 | 0.5705 % | 0.017375930 | 0.000099146 | -0.000099146 | 0.005606818 |
| 007.30 | CONSOL. FIRE PRO.DIST.OF L.A.CO. | 0.159099988 | 15.9099 % | 0.017375930 | 0.002764510 | -0.002764510 | 0.156335478 |
| 007.31 | L A C FIRE-FFW | 0.006213429 | 0.6213 % | 0.017375930 | 0.000107964 | 0.000000000 | 0.006213429 |
| 030.10 | L.A.CO.FL.CON.DR.IMP.DIST.MAINT. | 0.001486434 | 0.1486 % | 0.017375930 | 0.000025828 | -0.000025828 | 0.001460606 |
| 030.70 | LA CO FLOOD CONTROL MAINT | 0.008412047 | 0.8412 % | 0.017375930 | 0.000146167 | -0.000146167 | 0.008265880 |
| 061.80 | GREATER L A CO VECTOR CONTROL | 0.000322714 | 0.0322 % | 0.017375930 | 0.000005607 | -0.000005607 | 0.000317107 |
| 068.05 | ANTELOPE VY RESOURCE CONSER DIST | 0.000000000 | 0.0000 % | 0.017375930 | 0.000000000 | 0.000000000 | 0.000000000 |
| 302.01 | SANTA CLARITA VALLEY WATER-CLWA | 0.051941153 | 5.1941 % | 0.017375930 | 0.000902525 | -0.000902525 | 0.051038628 |
| 309.01 | SANTA CLARITA VALLEY WATER-NCW | 0.000925093 | 0.0925 % | 0.017375930 | 0.000016074 | -0.000016074 | 0.000909019 |
| 309.04 | STA CLRTA VALLEY WTR-NCW01 | 0.035557020 | 3.5557 % | 0.017375930 | 0.000617836 | -0.000617836 | 0.034939184 |
| 400.00 | EDUCATIONAL REV AUGMENTATION FD | 0.092590395 | 9.2590 % | 0.017375930 | 0.001608844 | EXEMPT | 0.092590395 |
| 400.01 | EDUCATIONAL AUG FD IMPOUND | 0.131877650 | 13.1877 % | 0.017375930 | 0.002291496 | EXEMPT | 0.131877650 |
| 400.15 | COUNTY SCHOOL SERVICES | 0.001283294 | 0.1283 % | 0.017375930 | 0.000022298 | EXEMPT | 0.001283294 |
| 400.21 | CHILDREN'S INSTIL TUITION FUND | 0.002546817 | 0.2546 % | 0.017375930 | 0.000044253 | EXEMPT | 0.002546817 |
| 440.01 | CASTAIC UNION SCHOOL DISTRICT | 0.053638052 | 5.3638 % | 0.017375930 | 0.000932011 | EXEMPT | 0.053638052 |
| 440.06 | CO.SCH.SERV.FD.- CASTAIC UNION | 0.010446888 | 1.0446 % | 0.017375930 | 0.000181524 | EXEMPT | 0.010446888 |

ANNEXATION NUMBER: 1129

PROJECT NAME: A-SCV-1129

TRA: 08975

| ACCOUNT # | TAXING AGENCY | CURRENT TAX SHARE | PERCENT | PROPOSED DIST SHARE | ALLOCATED SHARE | ADJUSTMENTS | NET SHARE |
|-----------|----------------------------------|-------------------|------------|---------------------|-----------------|--------------|-------------|
| 440.07 | DEV.CTR. HDCPD.MINOR-CASTAIC | 0.000915670 | 0.0915 % | 0.017375930 | 0.000015910 | EXEMPT | 0.000915670 |
| 757.02 | HART WILLIAM S UNION HIGH | 0.073260057 | 7.3260 % | 0.017375930 | 0.001272961 | EXEMPT | 0.073260057 |
| 757.06 | CO.SCH.SERV.FD.- HART,WILLIAM S. | 0.000305374 | 0.0305 % | 0.017375930 | 0.000005306 | EXEMPT | 0.000305374 |
| 757.07 | HART,WILLIAM S.-ELEM SCHOOL FUND | 0.038547174 | 3.8547 % | 0.017375930 | 0.000669792 | EXEMPT | 0.038547174 |
| 814.04 | SANTA CLARITA COMMUNITY COLLEGE | 0.033645712 | 3.3645 % | 0.017375930 | 0.000584625 | EXEMPT | 0.033645712 |
| ***067.35 | STA CLRTA VLY SANIT DIS OF LA CO | 0.000000000 | 0.0000 % | 0.017375930 | 0.000000000 | 0.000000000 | 0.009746910 |
| TOTAL: | | 1.000000000 | 100.0000 % | | 0.017375930 | -0.009746910 | 1.000000000 |

ANNEXATION TO: STA CLRTA VLY SANIT DIS OF LA CO
 ACCOUNT NUMBER: 067.35
 TRA: 11884
 EFFECTIVE DATE: 07/01/2023
 ANNEXATION NUMBER: 1129 PROJECT NAME: A-SCV-1129
 DISTRICT SHARE: 0.017375930

| ACCOUNT # | TAXING AGENCY | CURRENT TAX SHARE | PERCENT | PROPOSED DIST SHARE | ALLOCATED SHARE | ADJUSTMENTS | NET SHARE |
|-----------|----------------------------------|-------------------|-----------|---------------------|-----------------|--------------|-------------|
| 001.05 | LOS ANGELES COUNTY GENERAL | 0.268114031 | 26.8124 % | 0.017375930 | 0.004658740 | -0.004768502 | 0.263345529 |
| 001.20 | L.A. COUNTY ACCUM CAP OUTLAY | 0.000103486 | 0.0103 % | 0.017375930 | 0.000001798 | 0.000000000 | 0.000103486 |
| 003.01 | L A COUNTY LIBRARY | 0.020661558 | 2.0661 % | 0.017375930 | 0.000359013 | -0.000359013 | 0.020302545 |
| 005.25 | ROAD DIST # 5 | 0.005705964 | 0.5705 % | 0.017375930 | 0.000099146 | -0.000099146 | 0.005606818 |
| 007.30 | CONSOL. FIRE PRO.DIST.OF L.A.CO. | 0.159099988 | 15.9099 % | 0.017375930 | 0.002764510 | -0.002764510 | 0.156335478 |
| 007.31 | L A C FIRE-FFW | 0.006213429 | 0.6213 % | 0.017375930 | 0.000107964 | 0.000000000 | 0.006213429 |
| 019.40 | CO LIGHTING MAINT DIST NO 1687 | 0.002400000 | 0.2400 % | 0.017375930 | 0.000041702 | -0.000041702 | 0.002358298 |
| 030.10 | L.A.CO.FL.CON.DR.IMP.DIST.MAINT. | 0.001486434 | 0.1486 % | 0.017375930 | 0.000025828 | -0.000025828 | 0.001460606 |
| 030.70 | LA CO FLOOD CONTROL MAINT | 0.008412047 | 0.8412 % | 0.017375930 | 0.000146167 | -0.000146167 | 0.008265880 |
| 061.80 | GREATER L A CO VECTOR CONTROL | 0.000322714 | 0.0322 % | 0.017375930 | 0.000005607 | -0.000005607 | 0.000317107 |
| 068.05 | ANTELOPE VY RESOURCE CONSER DIST | 0.000000000 | 0.0000 % | 0.017375930 | 0.000000000 | 0.000000000 | 0.000000000 |
| 302.01 | SANTA CLARITA VALLEY WATER-CLWA | 0.051941153 | 5.1941 % | 0.017375930 | 0.000902525 | -0.000902525 | 0.051038628 |
| 309.01 | SANTA CLARITA VALLEY WATER-NCW | 0.000925093 | 0.0925 % | 0.017375930 | 0.000016074 | -0.000016074 | 0.000909019 |
| 309.04 | STA CLRTA VALLEY WTR-NCW01 | 0.035557020 | 3.5557 % | 0.017375930 | 0.000617836 | -0.000617836 | 0.034939184 |
| 400.00 | EDUCATIONAL REV AUGMENTATION FD | 0.092590395 | 9.2590 % | 0.017375930 | 0.001608844 | EXEMPT | 0.092590395 |
| 400.01 | EDUCATIONAL AUG FD IMPOUND | 0.131877650 | 13.1877 % | 0.017375930 | 0.002291496 | EXEMPT | 0.131877650 |
| 400.15 | COUNTY SCHOOL SERVICES | 0.001283294 | 0.1283 % | 0.017375930 | 0.000022298 | EXEMPT | 0.001283294 |
| 400.21 | CHILDREN'S INSTIL TUITION FUND | 0.002546817 | 0.2546 % | 0.017375930 | 0.000044253 | EXEMPT | 0.002546817 |
| 440.01 | CASTAIC UNION SCHOOL DISTRICT | 0.053638052 | 5.3638 % | 0.017375930 | 0.000932011 | EXEMPT | 0.053638052 |

ANNEXATION NUMBER: 1129

PROJECT NAME: A-SCV-1129

TRA: 11884

| ACCOUNT # | TAXING AGENCY | CURRENT TAX SHARE | PERCENT | PROPOSED DIST SHARE | ALLOCATED SHARE | ADJUSTMENTS | NET SHARE |
|-----------|----------------------------------|-------------------|------------|---------------------|-----------------|--------------|-------------|
| 440.06 | CO.SCH.SERV.FD.- CASTAIC UNION | 0.010446888 | 1.0446 % | 0.017375930 | 0.000181524 | EXEMPT | 0.010446888 |
| 440.07 | DEV.CTR. HDCPD.MINOR-CASTAIC | 0.000915670 | 0.0915 % | 0.017375930 | 0.000015910 | EXEMPT | 0.000915670 |
| 757.02 | HART WILLIAM S UNION HIGH | 0.073260057 | 7.3260 % | 0.017375930 | 0.001272961 | EXEMPT | 0.073260057 |
| 757.06 | CO.SCH.SERV.FD.- HART,WILLIAM S. | 0.000305374 | 0.0305 % | 0.017375930 | 0.000005306 | EXEMPT | 0.000305374 |
| 757.07 | HART,WILLIAM S.-ELEM SCHOOL FUND | 0.038547174 | 3.8547 % | 0.017375930 | 0.000669792 | EXEMPT | 0.038547174 |
| 814.04 | SANTA CLARITA COMMUNITY COLLEGE | 0.033645712 | 3.3645 % | 0.017375930 | 0.000584625 | EXEMPT | 0.033645712 |
| ***067.35 | STA CLRTA VLY SANIT DIS OF LA CO | 0.000000000 | 0.0000 % | 0.017375930 | 0.000000000 | 0.000000000 | 0.009746910 |
| TOTAL: | | 1.000000000 | 100.0000 % | | 0.017375930 | -0.009746910 | 1.000000000 |



June 2, 2023

Boards of Directors
Los Angeles County Sanitation Districts

Dear Directors:

Wastewater Budget Matters for Fiscal Year 2023-24

The agendas for the upcoming meetings of the Boards of Directors contain items relating to wastewater budget matters for fiscal year 2023-24. These items include establishing the appropriations limit on the proceeds of taxes; adopting the sewerage system final budget; requesting the tax levy; authorizing appropriations per the sewerage system budget; and, for certain Districts, actions related to the previously filed Service Charge Report.

APPROPRIATIONS LIMIT

The Constitution of the State of California places a limit on the authorization to expend the proceeds of taxes levied by state and local governments in California. In addition, the Government Code requires the governing body for each local jurisdiction to establish, by resolution, the appropriations limit for each fiscal year. The appropriations limit for fiscal year 2023-24 has been determined by adjusting the previous limit for fiscal year 2022-23 based upon population change factors for Los Angeles County and the change in the California Personal Per Capita Income. The appropriations limit has also been adjusted to include the increased operation and maintenance and capital costs of treatment processes and facilities needed to comply with state and federal requirements. All of this is in accordance with the procedures outlined in *Article XIII B* of the Constitution and *Section 7910* of the Government Code. The proposed appropriations limit and anticipated tax revenue are enclosed. This information has been available to the public at the Districts' Joint Administration Office in conformance with the requirement that the documentation used in the determination of the appropriations limit be available fifteen (15) days prior to its establishment by the Board of Directors. This item does not apply to the Newhall Ranch Sanitation District (NRSD) since this District does not receive ad valorem taxes.

FINAL BUDGET FOR FISCAL YEAR 2023-24

Enclosed for your review are the proposed final fiscal year 2023-24 budgets for the District and the Joint Outfall System (JOS), if applicable. Budgets include a list of proposed capital projects (if any) along with descriptions of the projects; a list of user fees; information on the monies set aside in various funds/reserves; and an explanation of terms used in the budget. The JOS budget will only be adopted by District No. 2, the administrative District for the JOS. Joint Administration and Joint Outfall costs are allocated to each District according to the ratio of the number of sewage units in a District to the total number of sewage units in all the Districts signatory to each agreement. A sewage unit represents the average daily sewage flow and strength (measured in terms of chemical oxygen demand and suspended solids) from a single-family home. This method of allocating costs considers flow as well as the strength of sewage from all types of users and is the most equitable way to distribute joint costs.

SERVICE CHARGE REPORT

District Nos. 4, 9, 16, 17, and NRSD only will also have an item regarding the Service Charge Report previously filed with the District Clerk. Adoption of the Report is needed for the continued collection of service

charges on the property tax roll for residential, commercial, and small industrial dischargers. This is the most cost-effective and efficient means of collecting the service charges.

Prior to considering adoption of the Report, the Board must hold a public hearing. The date, time, and location of the public hearing will be held as listed on the agenda. Notice of the public hearing was published twice in newspapers of general circulation within the District. Public testimony will be accepted at the hearing and all written comments must be received at or by this time. After all public input has been received by the Board, the public hearing will be closed, and the Board will consider adoption of the Report. A copy of the Service Charge report is attached for Districts considering this action.

SUMMARY OF REQUIRED ACTIONS

At the June Board meetings, it will be recommended that the Boards of Directors adopt a resolution establishing the appropriations limit on the proceeds of taxes; adopt the budget for fiscal year 2023-24; adopt a resolution requesting the tax levy; authorize appropriations in the sewerage system budget; and adopt the Service Charge Report (District Nos. 4, 9, 16, and 17 only), all as shown on the agenda.

Very truly yours,



Robert C. Ferrante

RCF:gc

Enclosures

Santa Clarita Valley Sanitation District
Final Operating Fund Budget (\$ in thousands)
Fiscal Year 2023-24

| | <u>Adopted</u> <u>2022-23 ⁽¹⁾</u> | <u>Proposed</u> <u>2023-24 ⁽¹⁾</u> |
|---------------------------------------|---|--|
| <u>Starting Balance</u> | \$ 22,360 | \$ 98,888 |
| <u>Sources of Funds</u> | | |
| Service Charge | \$ 36,455 | \$ 36,193 |
| Industrial Waste Charges | 2,103 | 2,282 |
| Contract Revenue | 472 | 450 |
| Agricultural and Recycled Water Sales | 170 | 190 |
| Total Operating Revenue | 39,200 | 39,115 |
| Ad Valorem Tax Revenue | 8,435 | 9,092 |
| Interest | 112 | 2,472 |
| Total Non-Operating Revenue | 8,547 | 11,564 |
| Grants | 3,000 | 300 |
| Loan Proceeds | 70,788 | 17,544 |
| Total Capital Revenue | 73,788 | 17,844 |
| Transfers from Designated Funds | 3,290 | 1,050 |
| Transfers from Restricted Funds | - | 1,380 |
| Total Transfers In | 3,290 | 2,430 |
| Total Sources of Funds | \$ 124,825 | \$ 70,954 |
| <u>Use of Funds</u> | | |
| Joint Administration Operations | \$ 6,328 | \$ 7,112 |
| Sewer System Operations | 711 | 830 |
| Treatment Plant Operations | 28,490 | 39,027 |
| Other Operational Expenditures | 599 | 1,740 |
| Operations and Maintenance Expense | 36,128 | 48,709 |
| Joint Administration Capital | 411 | 907 |
| Sewer System Capital | 6,350 | 1,430 |
| Treatment Plant Capital | 44,721 | 26,921 |
| Other Capital Expenditures | 1,400 | - |
| Capital Expense | 52,882 | 29,258 |
| Loan Repayment | 3,445 | 3,375 |
| Debt Service | 3,445 | 3,375 |
| Transfers to Designated Reserves | - | 29,057 |
| Transfers Out | - | 29,057 |
| Total Use of Funds | \$ 92,455 | \$ 110,400 |
| <u>Ending Balance</u> | \$ 54,730 | \$ 59,442 |

1) The Adopted FY 22-23 Budget is presented as adopted by the Board in 2022. The ending balance reflects the estimate at that time, and therefore will not match the current estimated starting balance for the Proposed FY 23-24 Budget.

**Santa Clarita Valley Sanitation District
Capital Project Wastewater Budget (\$ in thousands)**

| Project Name | Description | FY23-24 Budget | Estimated Completion | Total Budget (1) |
|---|--|----------------|----------------------|------------------|
| Soledad Canyon Relief Trunk Sewer Section 4 | Rehabilitation of corroded sewer | 630 | 6/30/24 | 7,000 |
| SCV Non-Reinforced Concrete Sewer Rehabilitation (Misc Projects) | Rehabilitation of corroded sewer | 300 | 6/30/30 | 2,600 |
| Soledad Canyon Trunk Sewer Rehabilitation | Rehabilitation of corroded sewer | 300 | 6/30/25 | 1,600 |
| District #32 Main Trunk Sewer Rehabilitation | Rehabilitation of corroded sewer | 200 | 6/30/31 | 5,200 |
| Sewer System Total | | 1,430 | | |
| Valencia WRP Advanced Water Treatment Facility | Improvements to advanced water treatment facilities | 11,500 | 6/30/25 | 121,600 |
| Saugus WRP Primary Structures Concrete Repairs | Improvements to primary treatment facilities | 4,000 | 6/30/25 | 9,000 |
| Saugus WRP Power Distribution System Modifications | Electrical and instrumentation infrastructure improvements | 2,730 | 12/31/26 | 24,800 |
| Valencia WRP Power Distribution System Modifications | Electrical and instrumentation infrastructure improvements | 2,101 | 10/1/26 | 49,800 |
| Saugus WRP Security Fencing and Improvements | Improvements to security systems | 1,300 | 12/31/24 | 2,200 |
| Valencia WRP Laboratory | Improvements to laboratory facilities | 1,000 | 6/30/24 | 1,000 |
| Valencia WRP Tertiary Filtration Facilities | Improvements to tertiary treatment facilities | 1,000 | 6/30/28 | 22,000 |
| Saugus WRP Return Activated Sludge Pump Replacement | Improvements to secondary treatment facilities | 800 | 12/31/25 | 3,000 |
| Valencia WRP Generator Switchgear Control System Upgrades | Electrical and instrumentation infrastructure improvements | 480 | 12/31/24 | 700 |
| Saugus WRP - Influent Pumps Replacement 2022 | Process infrastructure improvements | 400 | 6/30/26 | 3,000 |
| Valencia WRP Stormwater Management Improvements | Infrastructure improvements | 350 | 12/31/25 | 400 |
| Valencia WRP - Mechanically Stabilized Earth Retaining Wall Ground Improvements | Infrastructure improvements | 300 | 6/30/27 | 22,185 |
| Valencia WRP Security Fencing, Security Cameras and South Entrance Improvements | Improvements to security systems | 220 | 12/31/25 | 1,550 |
| Saugus WRP New Sodium Bisulfite Facilities | Process infrastructure improvements | 200 | 6/30/24 | 250 |
| Valencia WRP Locker room modifications (WM) | Infrastructure improvements | 130 | 12/31/23 | 200 |
| Valencia WRP Miscellaneous Maintenance and E&I Capital Improvement Projects | Infrastructure improvements | 100 | 6/30/31 | 2,050 |
| Valencia WRP North Return Activated Sludge Drawoff Piping Replacement | Improvements to secondary treatment facilities | 100 | 6/30/25 | 400 |
| Saugus WRP UV Disinfection Facilities | Improvements to disinfection facilities | 60 | 6/30/24 | 12,600 |
| Valencia WRP UV Disinfection Facilities | Improvements to disinfection facilities | 50 | 6/30/24 | 27,500 |
| Saugus WRP Miscellaneous Maintenance and E&I Capital Improvement Projects | Infrastructure improvements | 50 | 6/30/31 | 1,020 |
| Saugus WRP Air Line for Aeration Tank 2 (WM) | Improvements to secondary treatment facilities | 50 | 6/30/24 | 50 |
| Treatment Plants Total | | 26,921 | | |
| Total Capital Projects | | 28,351 | | |

(1) Includes past, present, and future amounts

**Santa Clarita Valley Sanitation District
Reserve Funds Proposed Budget (\$ in thousands)
Fiscal Year 2023-24**

| | Unrestricted | Designated | | | | Restricted | Total |
|------------------------------------|---------------|------------|-------------------------------|---|-----------------------|------------------------|----------------|
| | Operating | Emergency | O&M Financial Stability | Capital Projects Financial Stability | Rate Stabilization | Capital Improvement | |
| Starting Balance | \$ 98,888 | 682 | 46,701 | 7,293 | 1,050 | 588 | 155,202 |
| Operating Revenue | 39,115 | - | - | - | - | - | 39,115 |
| Non-Operating Revenue | 11,564 | 17 | 1,168 | 182 | 26 | 15 | 12,972 |
| Capital Revenue | 17,844 | - | - | - | - | 777 | 18,621 |
| Transfers In | 2,430 | - | 19,502 | 9,562 | - | - | 31,494 |
| Operations and Maintenance Expense | 48,709 | - | - | - | - | - | 48,709 |
| Capital Expense | 29,258 | - | - | - | - | - | 29,258 |
| Debt Service | 3,375 | - | - | - | - | - | 3,375 |
| Transfers Out | 29,057 | 7 | - | - | 1,050 | 1,380 | 31,494 |
| Ending Balance | 59,442 | 692 | 67,371 | 17,037 | 26 | - | 144,569 |

**Santa Clarita Valley Sanitation District
Wastewater Budget Rate and Other Information Summary
Fiscal Year 2023-24**

| | <u>Adopted 2022-23</u> | <u>Proposed 2023-24</u> |
|--|----------------------------|-----------------------------|
| <u>Service Charge Rate (\$ per Sewage Unit)</u> | 370.00 | 370.00 |
| <u>Industrial Waste (Surcharge) Rates</u> | | |
| Flow (\$ per MGY) | 1,417.00 | 1,417.00 |
| COD (\$ per 1000 lbs) | 323.00 | 323.00 |
| SS (\$ per 1000 lbs) | 793.60 | 793.60 |
| Peak Flow (\$ per gpm) | 200.40 | 200.40 |
| Short Form Rate (\$ per million gallon per year) | 4,798.00 | 4,798.00 |
| Liquid Waste Disposal (\$ per 100 gallon) | 14.50 | 14.50 |
| <u>Total Connection Fee Rate (\$ per Capacity Unit)</u> | 2,961.00 | 2,961.00 |
| <u>Projected Sewage Units</u> | | |
| Residential/Commercial | 98,528 | 97,819 |
| Industrial Waste | 1,117 | 1,505 |
| Industrial Waste Contract | 2,145 | 2,210 |
| Contract In | 61 | 54 |
| Total Served Sewage Units | <u>101,851</u> | <u>101,588</u> |

Sanitation Districts of Los Angeles County

Wastewater Budget Explanation and Glossary of Terms

Fiscal Year 2023-24

INTRODUCTION

The budget package for each District consists of the following sections:

- **Operating Fund Wastewater Budget:** Details of the sources and uses of funds for the Operating Fund, which is the only Unrestricted Reserve fund as described in the District’s wastewater reserve policy. The budget for the upcoming fiscal year is compared to the final adopted budget for the current fiscal year.
- **Proposed Capital Projects:** Shows major capital projects budgeted expenditures for the fiscal year. If a District has no major capital projects budgeted, this section is omitted.
- **Designated and Restricted Reserve Budget:** Provides beginning and ending balances of each category of reserves along with major inflows to and outflows from that reserve.
- **Rate and Other Information Summary:** Shows current and budgeted rates for the various user fees; summary of projected sewage units; and other metrics.

TERMS USED IN THE BUDGET

Below are explanations of budget line items and other terms used in the budgets. *Note that some terms may not apply for certain Districts.*

| | |
|--|--|
| Ad Valorem Taxes Revenue | The District’s share of Ad Valorem (property) taxes paid by property owners in the District. |
| Agricultural and Recycled Water Sales Revenue | Sales of reclaimed water. |
| Bond Proceeds | Funds received from the issuance of bonds. |
| Bond Repayment | Interest and principal payments toward bond debt. |
| Capital Payments by Districts | Payments received by Joint Outfall System Districts to be used toward system’s capital expenditures. |
| Composting Facility Capital Expenditures | Capital expenditures related to upgrade, repair, or expansion of composting facilities. |
| Composting Facility Operations and Maintenance Expenditures | Expenditures related to operating and maintaining composting facilities. |
| Contract Disposal Capital Expenditures | Capital expenditures related to conveyance and treatment of wastewater performed by another entity. |

| | |
|--|--|
| Contract Disposal Operations and Maintenance Expenditures | Expenditures related to the operation and maintenance for conveyance and treatment of wastewater performed by another entity. |
| Contract Revenue | Commodity and energy revenue; leases; and other similar sources of revenue. |
| District Sewer System Capital Expenditures | Capital expenditures related to rehabilitation or expansion of the District's sewers and pumping plants. |
| District's Sewer System Operations Expenditures | Expenditures related to operating and maintaining the District's sewers and pumping plants. |
| Field Office Capital Expenditures | Capital expenditures related to upgrade, repair, or expansion of field offices. |
| Grant Revenue | Grant proceeds received, generally state and/or federal grants toward capital projects. |
| Industrial Waste Revenue | Fees paid by large industrial users of the District's wastewater system. |
| Interest Revenue | Interest generated by District's Reserves. |
| Joint Administration Capital Expenditures | The District's share of Joint Capital Expenses minus Joint Capital Revenues. |
| Joint Administration Operations Expenditures | The District's share of Joint Administration Operating Expenditures less any operational or non-operational Joint Administration Revenues. |
| Joint Outfall Capital Expenditures | The District's share of the Joint Outfall capital payment. |
| Joint Outfall Operations Expenditures | The District's share of Joint Outfall System Operating Expenditures less any operational or non-operational Joint Outfall System Revenues. |
| Loan Proceeds | Funds received from loans taken out to finance capital projects, primarily State Revolving Fund Clean Water Loans. |
| Loan Repayment | Interest and principal payments toward loans, primarily State Revolving Fund Clean Water Loans. |
| Operating Fund Ending Balance | Projected balance in the Operating Fund as of June 30 at the end of the fiscal year shown. |
| Operating Fund Starting Balance | Projected cash balance in the Operating Fund as of July 1 at the beginning of the fiscal year shown. |

| | |
|--|---|
| Operating Payments by Districts | Payments received by Joint Outfall System Districts to be used for system’s net operating expenditures. |
| Other Capital Expenditures | Capital expenditures not related to District’s sewers, treatment plants, composing facilities, field offices, or contract disposal. |
| Other Operational Expenditures | The District’s operational expenditures that are not directly related to the District’s facilities, such as insurance, annexations, and certain regulatory work. |
| Service Charge Revenue | Fees paid by residential, commercial, and small industrial users of the District’s wastewater system. These fees are generally collected on the property tax bill as a separate line item. |
| Total Served Sewage Units | Total number of Sewage Units (single family home equivalent dischargers) that are served by treatment plants owned by the Districts. |
| Transfers from Designated Funds | Funds transferred from Designated Funds when projected operating reserve balance is below target; these funds are to be used toward operating expenditures. |
| Transfers from Districts | Payments received from Joint Outfall System Districts to fund the Joint Outfall reserves per June 1, 2022, Joint Outfall Agreement. |
| Transfers from Restricted Funds | Funds transferred from Restricted Funds to be used toward capital expenditures. |
| Transfers to Designated Reserves | Surplus funds at the end of the fiscal year not required for operating or cash-flow purposes that are transferred to designated reserves. Designated reserves are primarily used to help stabilize future rates and to set aside funds for future capital projects. |
| Transfers to Joint Outfall System | Individual District’s contribution to the Joint Outfall System reserves per June 1, 2022, Joint Outfall Agreement. |
| Treatment Plant Capital Expenditures | Capital expenditures related to upgrade, repair, or expansion of treatment plants. |
| Treatment Plant Operations Expenditures | Expenditures related to operating and maintaining treatment plants. |

SUMMARY OF 2023-24 APPROPRIATIONS LIMIT FOR EACH SANITATION DISTRICT

| DISTRICT NUMBER | 2022-23 APPROX. LMT. EXCLUDING MANDATED COSTS | POPULATION CHANGE FACTOR | ¹ APPROX. LMT. CHANGE FACTOR | 2023-24 APPROX. LMT. EXCLUDING MANDATED COSTS | 2023-24 MANDATED COSTS | 2023-24 APPROX. LMT. INCLUDING MANDATED COSTS | ESTIMATED AD VALOREM TAX REVENUES | DISTRICT NUMBER |
|-----------------|---|--------------------------|---|---|------------------------|---|-----------------------------------|-----------------|
| 1 | \$ 21,508,177 | 0.9925 | 1.0366 | \$ 22,294,667 | \$ 2,356,197 | \$ 24,650,864 | \$ 4,760,000 | 1 |
| 2 | 37,012,065 | 0.9925 | 1.0366 | 38,365,485 | 3,560,414 | 41,925,899 | 9,195,000 | 2 |
| 3 | 26,207,171 | 0.9949 | 1.0391 | 27,232,398 | 2,944,559 | 30,176,957 | 7,107,000 | 3 |
| 4 | 3,427,067 | 0.9960 | 1.0402 | 3,564,885 | - | 3,564,885 | 912,000 | 4 |
| 5 | 54,415,077 | 0.9925 | 1.0366 | 56,404,873 | 4,253,252 | 60,658,125 | 15,977,000 | 5 |
| 8 | 10,208,198 | 0.9932 | 1.0373 | 10,588,922 | 973,272 | 11,562,194 | 2,595,000 | 8 |
| 9 | 1,309,005 | 0.9925 | 1.0366 | 1,356,871 | - | 1,356,871 | 130,000 | 9 |
| 14 | 61,039,763 | 0.9942 | 1.0383 | 63,380,443 | 13,979,874 | 77,360,317 | 2,285,000 | 14 |
| 15 | 21,602,258 | 0.9932 | 1.0373 | 22,407,081 | 3,073,779 | 25,480,860 | 10,442,000 | 15 |
| 16 | 15,219,485 | 0.9947 | 1.0388 | 15,810,387 | 1,833,820 | 17,644,207 | 7,564,000 | 16 |
| 17 | 2,097,999 | 0.9925 | 1.0366 | 2,174,717 | 241,943 | 2,416,660 | 789,000 | 17 |
| 18 | 16,264,689 | 0.9925 | 1.0366 | 16,859,440 | 1,954,791 | 18,814,231 | 5,503,000 | 18 |
| 19 | 6,365,940 | 0.9925 | 1.0366 | 6,598,723 | 646,098 | 7,244,821 | 2,013,000 | 19 |
| 20 | 49,077,840 | 0.9933 | 1.0374 | 50,914,574 | 13,013,759 | 63,928,333 | 1,752,000 | 20 |
| 21 | 61,977,849 | 0.9944 | 1.0386 | 64,367,402 | 2,507,412 | 66,874,814 | 6,235,000 | 21 |
| 22 | 14,422,233 | 1.0001 | 1.0445 | 15,063,593 | 2,086,760 | 17,150,353 | 5,730,000 | 22 |
| 23 | 7,248,681 | 0.9925 | 1.0366 | 7,513,744 | 54,987 | 7,568,731 | 662,000 | 23 |
| 27 | 1,092,466 | 0.9925 | 1.0366 | 1,132,414 | - | 1,132,414 | 477,000 | 27 |
| 28 | 1,231,929 | 0.9935 | 1.0376 | 1,278,264 | 79,731 | 1,357,995 | 874,000 | 28 |
| 29 | 1,022,657 | 0.9925 | 1.0366 | 1,060,052 | 93,478 | 1,153,530 | 169,000 | 29 |
| SBC | 28,543,925 | 0.9925 | 1.0366 | 29,587,691 | 833,055 | 30,420,746 | 7,548,000 | SBC |
| SCV | 26,223,857 | 1.0041 | 1.0486 | 27,499,173 | 8,570,272 | 36,069,445 | 9,092,000 | SCV |
| 34 | | | | | | ² N/A | | 34 |
| NR | | | | | | ² N/A | | NR |

¹ This column represents the net change resulting from the percent change in population and the percent change in Per Capital Income of 4.44%

² This District is not subject to an appropriations limit as it does not receive any proceeds of taxes.